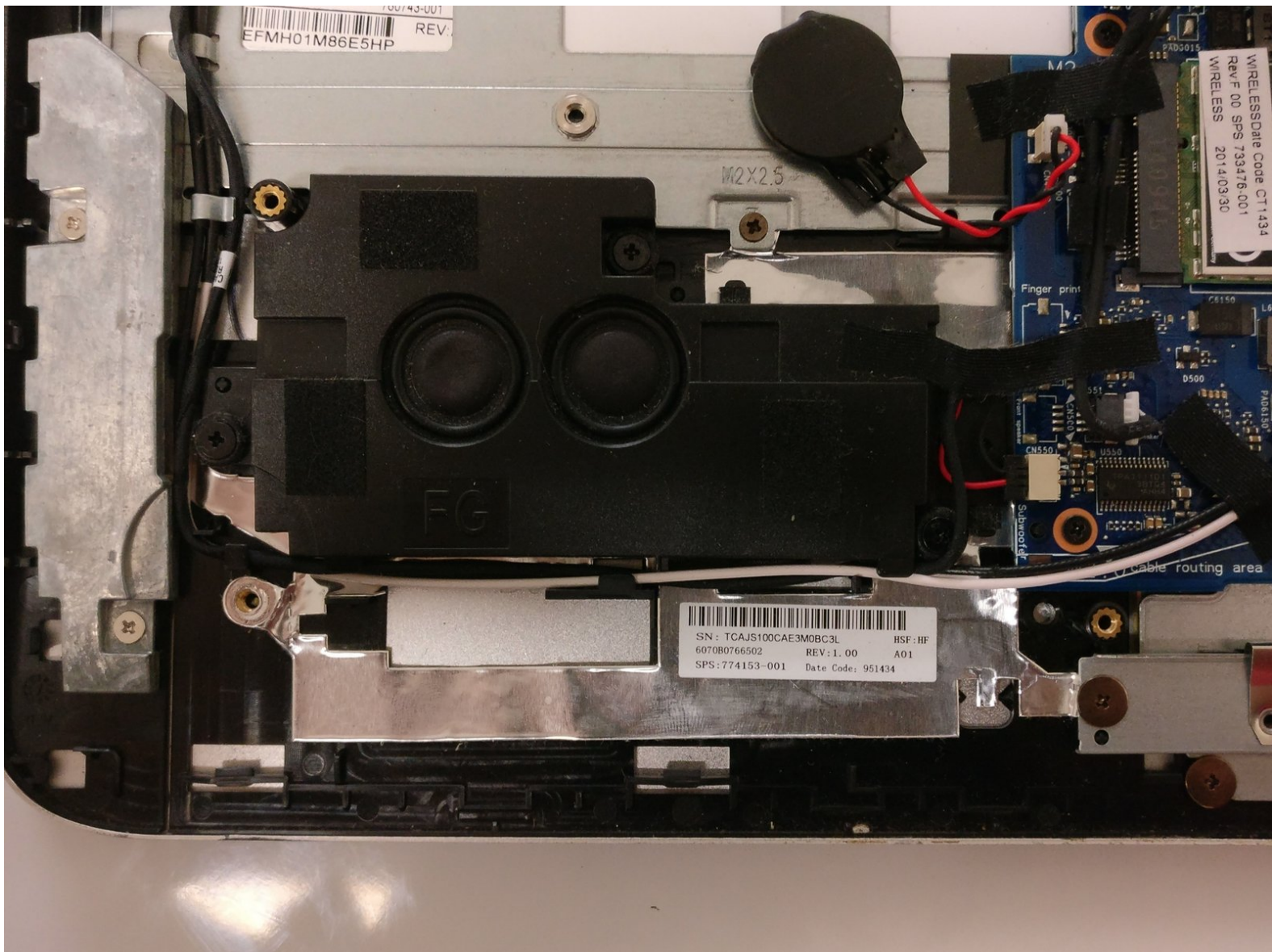




HP Envy m6-n010dx Speaker Replacement

How to remove the Speaker of a HP Envy m6-n010dx.

Written By: Justin Lee



INTRODUCTION

This guide demonstrates how to properly remove the Speaker of a HP Envy m6-n010dx.



TOOLS:

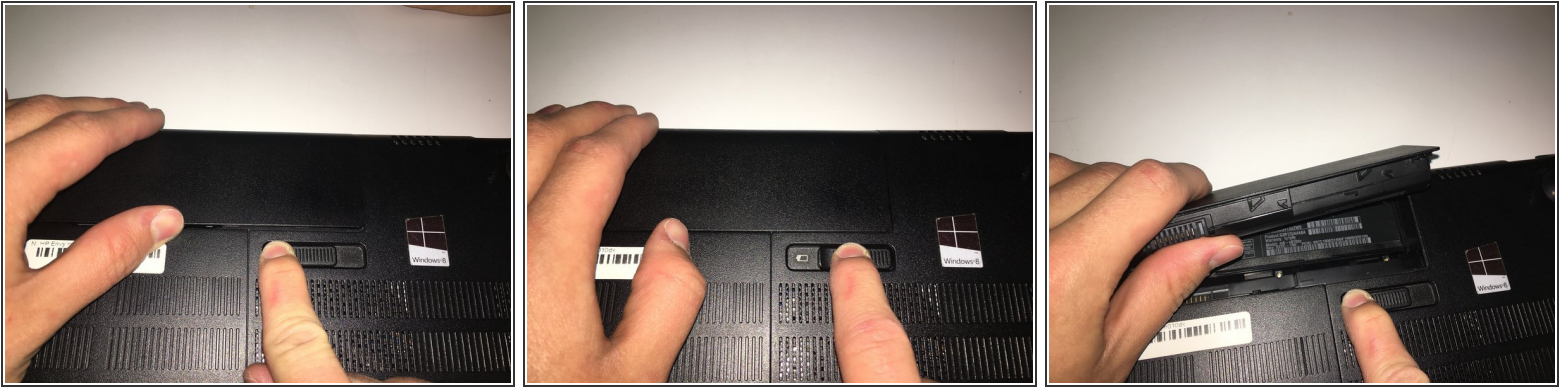
- [Phillips #00 Screwdriver](#) (1)



PARTS:

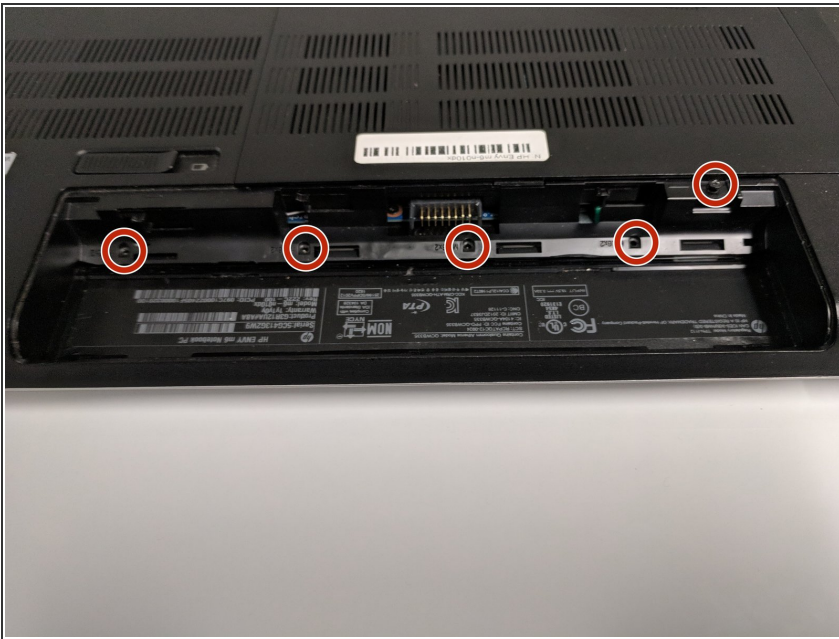
- [Black Electrical Tape](#) (1)

Step 1 — Battery



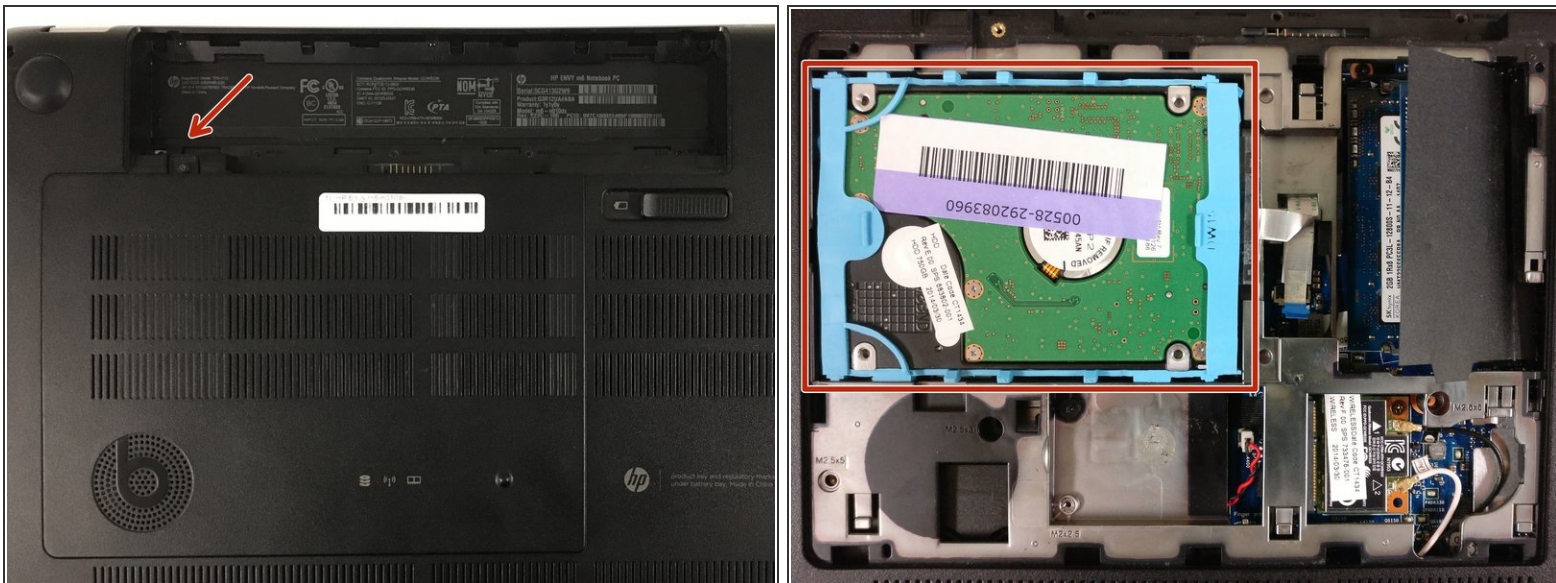
- Find the battery removal slider.
- Slide it across while simultaneously popping out and removing the device's battery.

Step 2 — Hard Drive



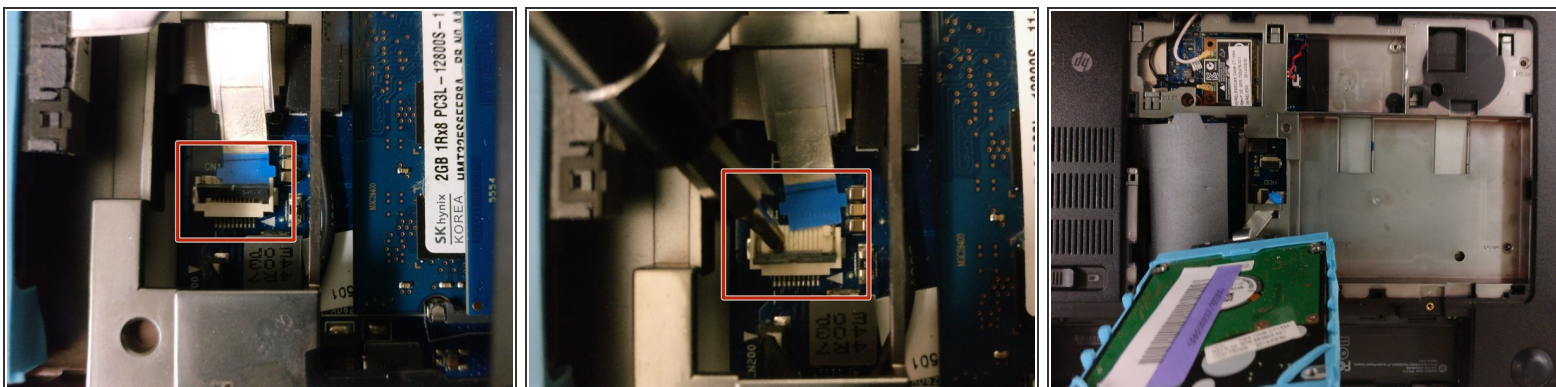
- Remove the five marked screws found under the battery using a philips head screwdriver.

Step 3



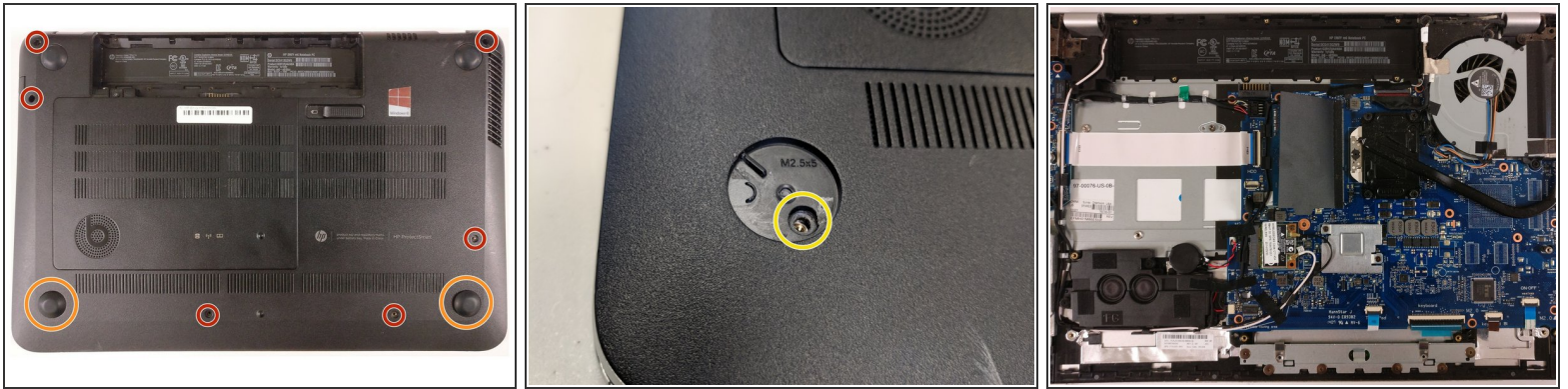
- Remove the small panel on the back by prying it off. This should reveal the hard drive.

Step 4



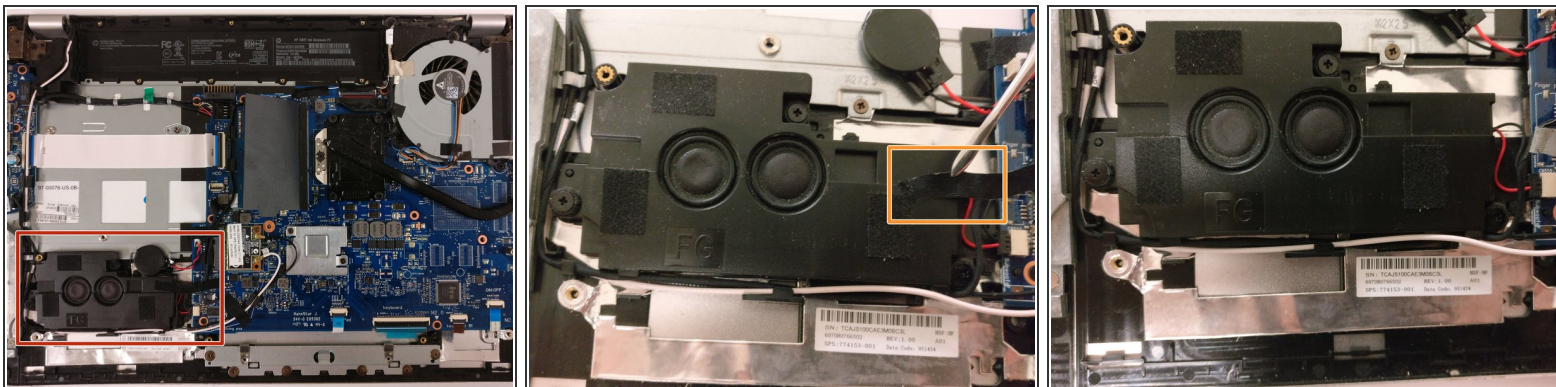
- ⓘ The hard drive is connected to the motherboard via this blue-tabbed cable, highlighted in red.
- Gently pry off the cover to release the cable.
- Slowly lift the hard drive out and away from the device.

Step 5 — Speaker



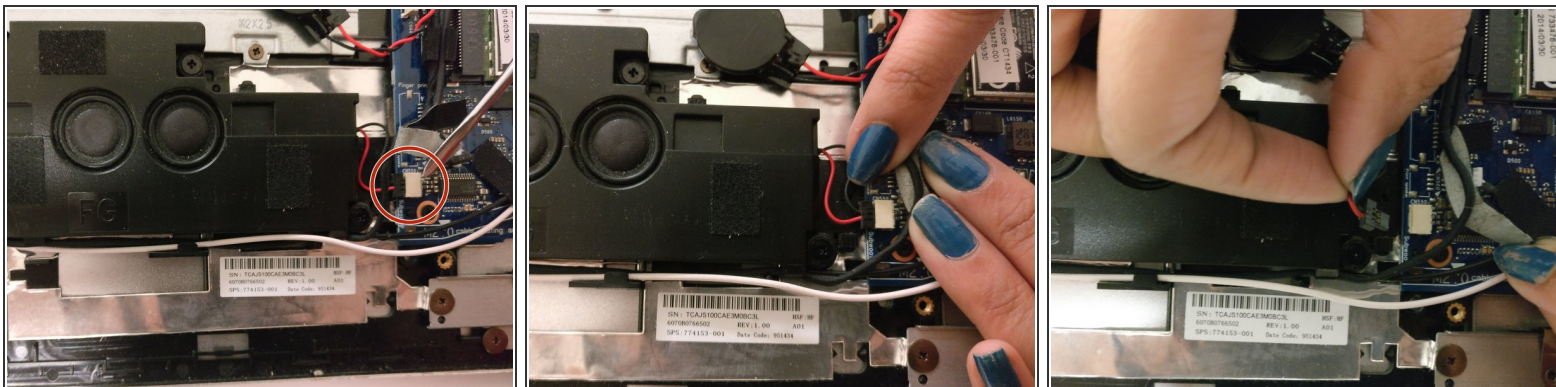
- Remove the marked screws.
- Pry off the lower two grip pads.
 - ☑ You may need to use more force than feels necessary.
- Remove the two additional screws underneath the lower grip pads.
- Remove the large back panel to reveal the inner workings.
 - ☑ The back panel might be difficult to remove. Use a flat object to help pry it off, and don't be afraid to use force.

Step 6



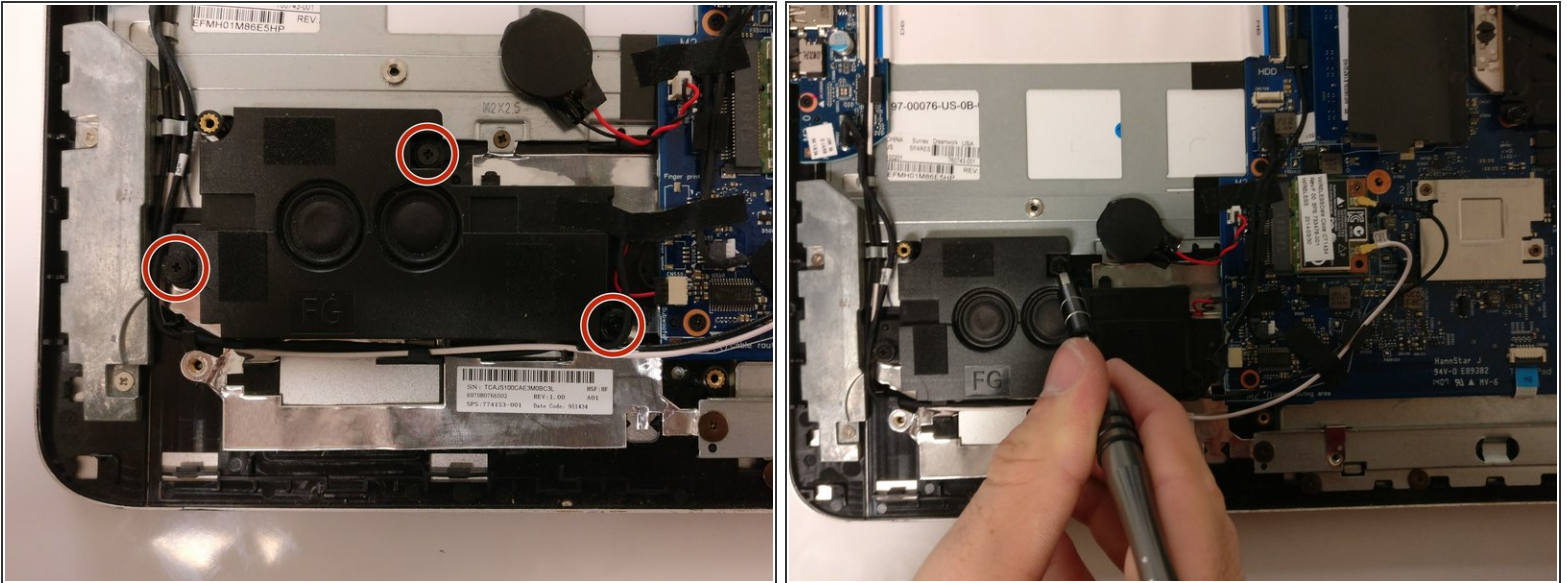
- Locate the speaker.
 - Locate the tape on the speaker.
 - Peel back the tape, disconnecting it from the speaker.
- i** When reassembling the speaker, make sure to use new electrical tape so it will stick.

Step 7



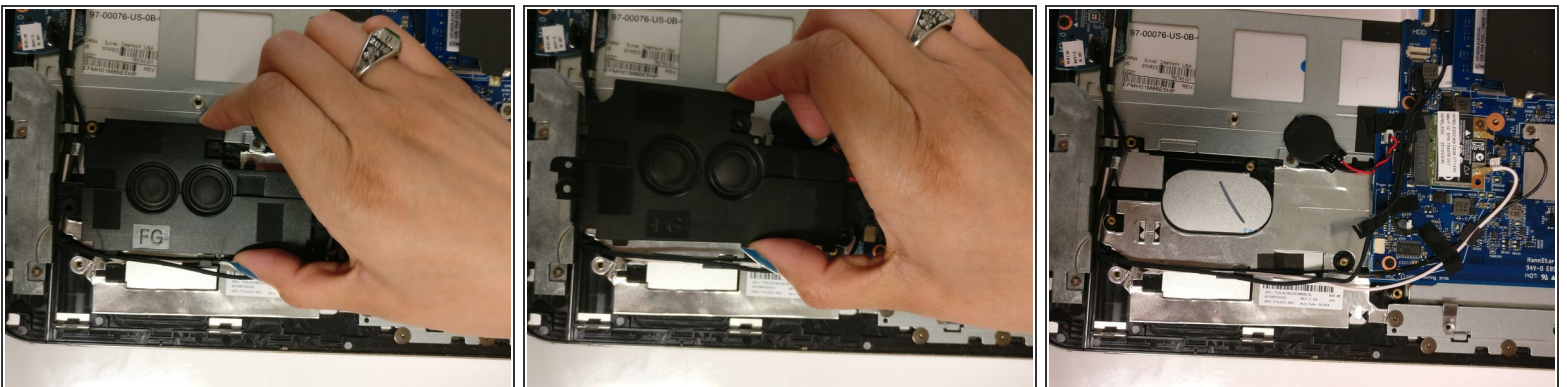
- Locate the connecting wire attached to the speaker.
- Disconnect the wire.

Step 8



- Use a screwdriver to unscrew the three screws on the speaker.

Step 9



- Remove the speaker.

To reassemble your device, follow these instructions in reverse order.