



Written By: Taylor Cheney



Page 1 of 6

INTRODUCTION

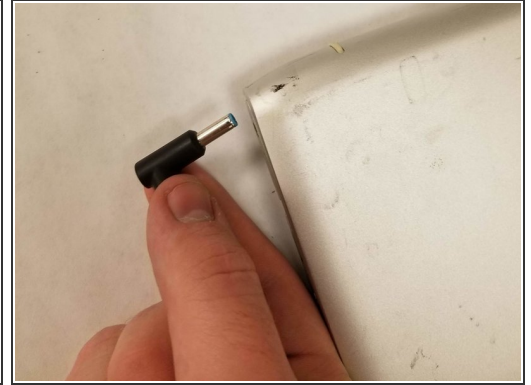
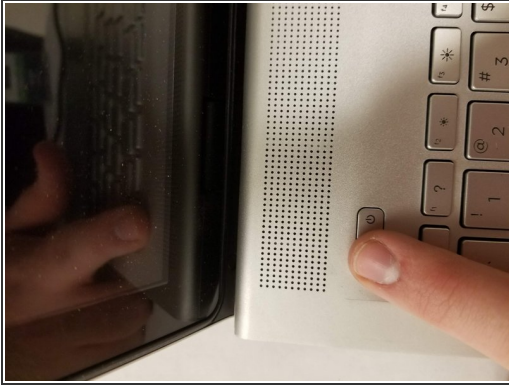
In this guide we will go over the steps on how to replace the battery including removing the back panel, Locating the battery, and replacement if needed. This will allow you to upgrade your battery or restore full battery capacity especially to older computers.



TOOLS:

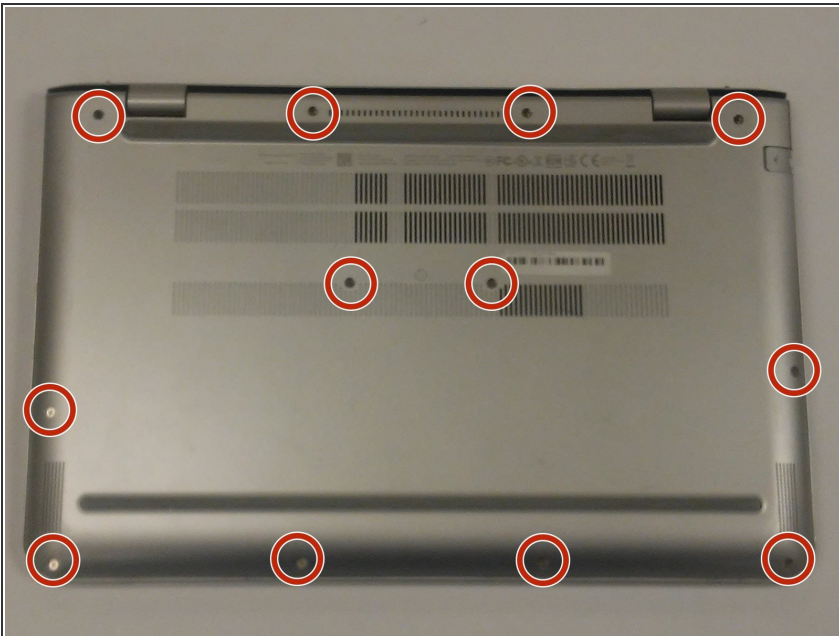
- [Phillips #1 Screwdriver](#) (1)
 - [iFixit Opening Tools](#) (1)
 - [Phillips #0 Screwdriver](#) (1)
-

Step 1 — HP Envy m6-p114dx Back panel



- Power the device off, unplug it, and ground yourself.

Step 2



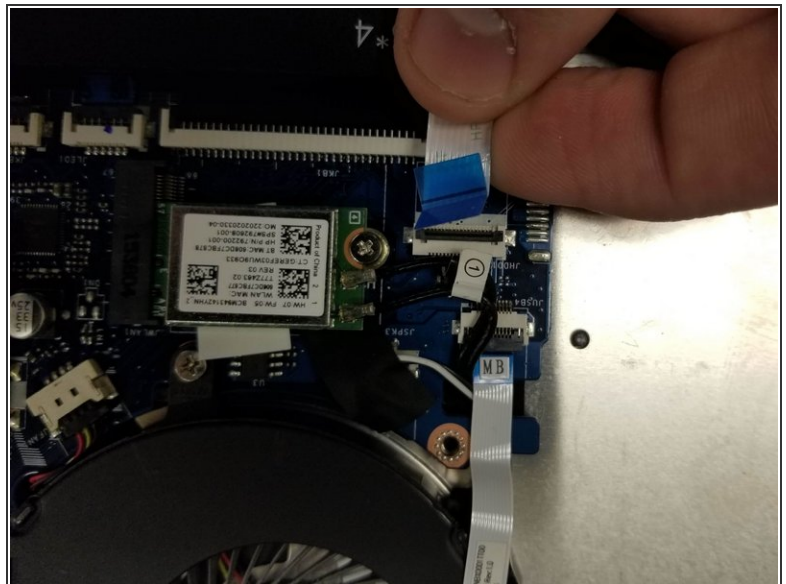
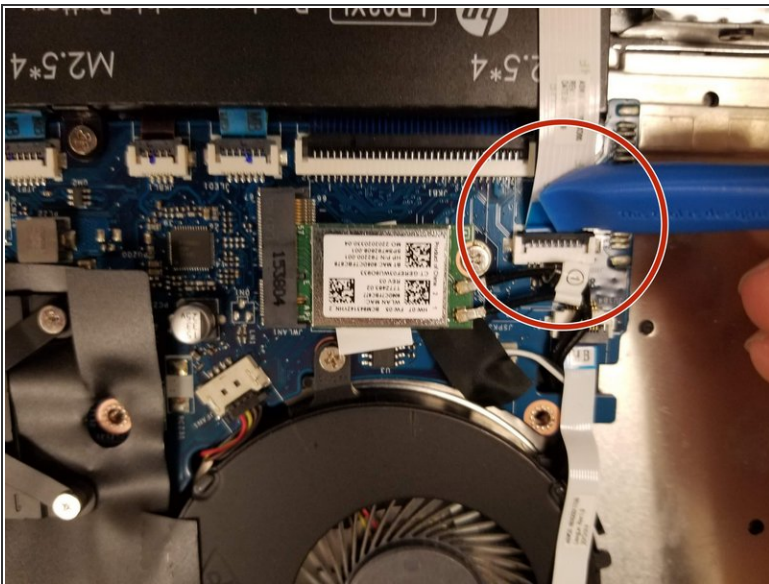
- Remove the twelve screws in the back case using a Phillips #1 screwdriver.

Step 3



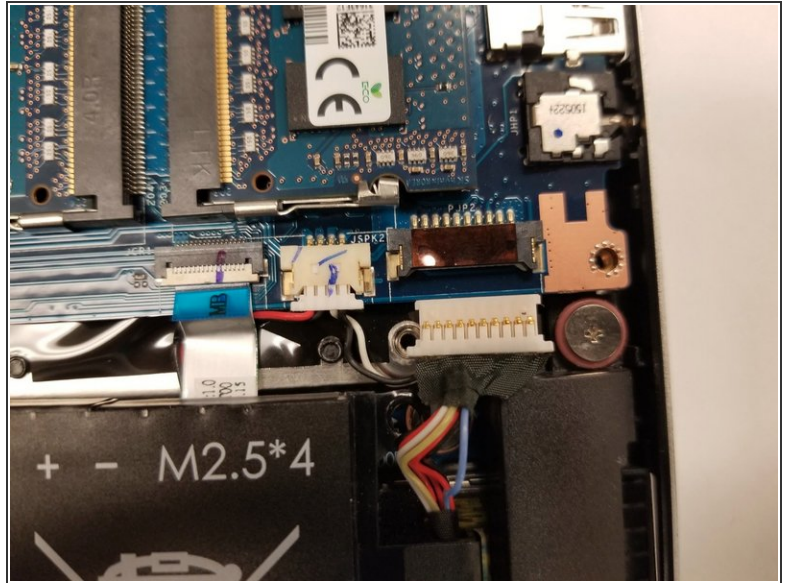
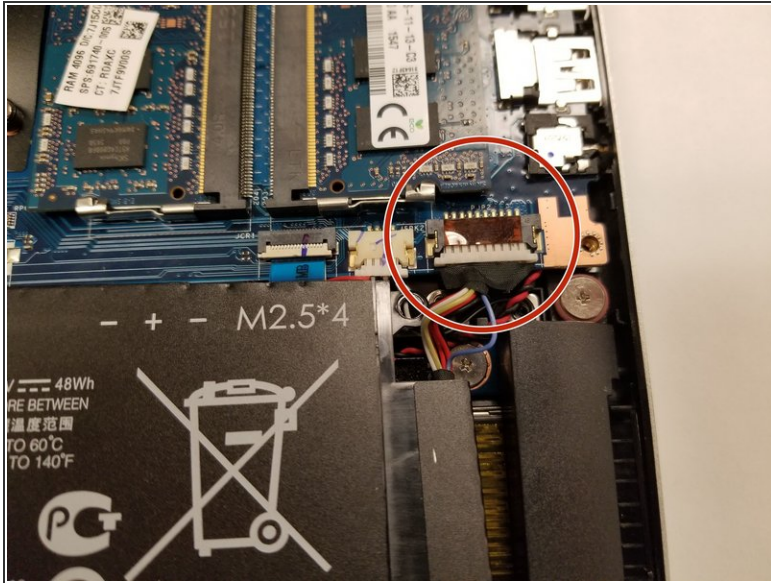
- Carefully wedge an iFixit opening tool under the cover and slide it alongside the case to ensure that all clips are un-clipped.

Step 4 — Battery



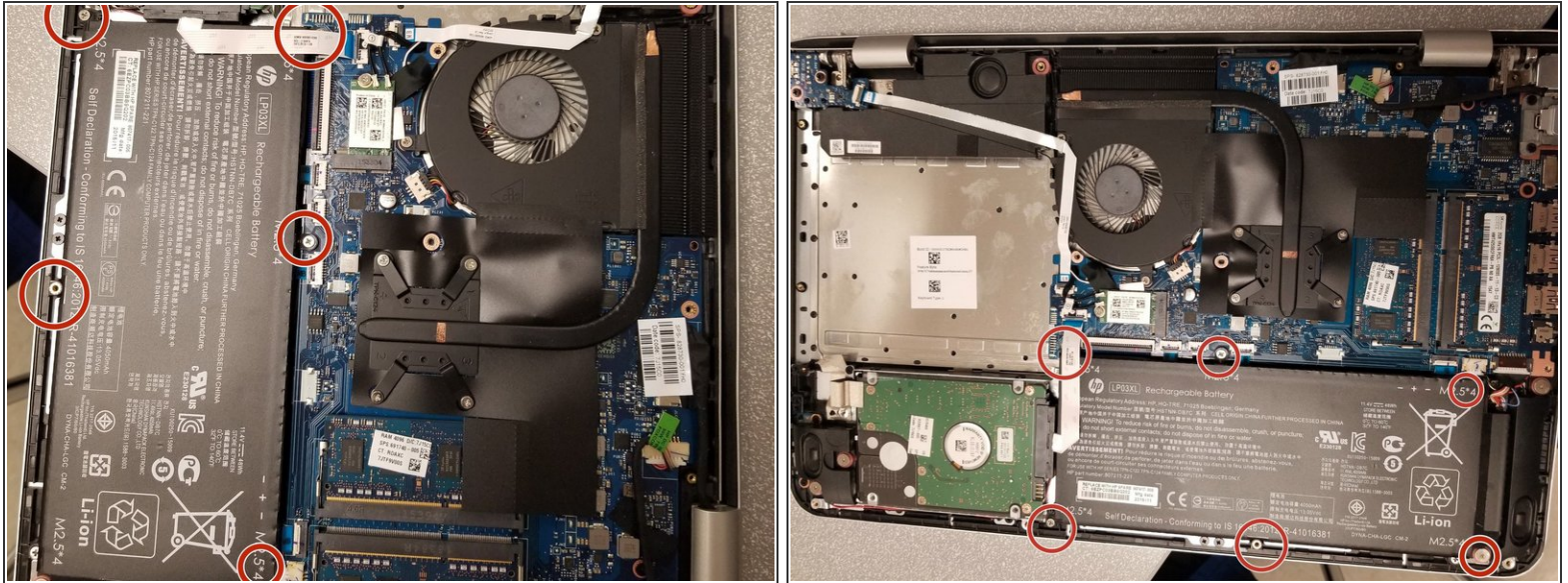
- Remove the cable connecting the hard drive to the motherboard by carefully lifting the black tab, then pulling out the disconnected ribbon cable.

Step 5



- Remove the cable connecting the battery to the motherboard by gripping the fabric and pulling downward.
- ⓘ The cable is connected next to the RAM cards.

Step 6



- Remove the six screws that hold the battery down with a Phillips #0 screwdriver.
- Once the screws are removed you should be able to easily lift up on the battery to remove it. (You may need to detach the ribbon cable glued to the battery)

To reassemble your device, follow these instructions in reverse order.