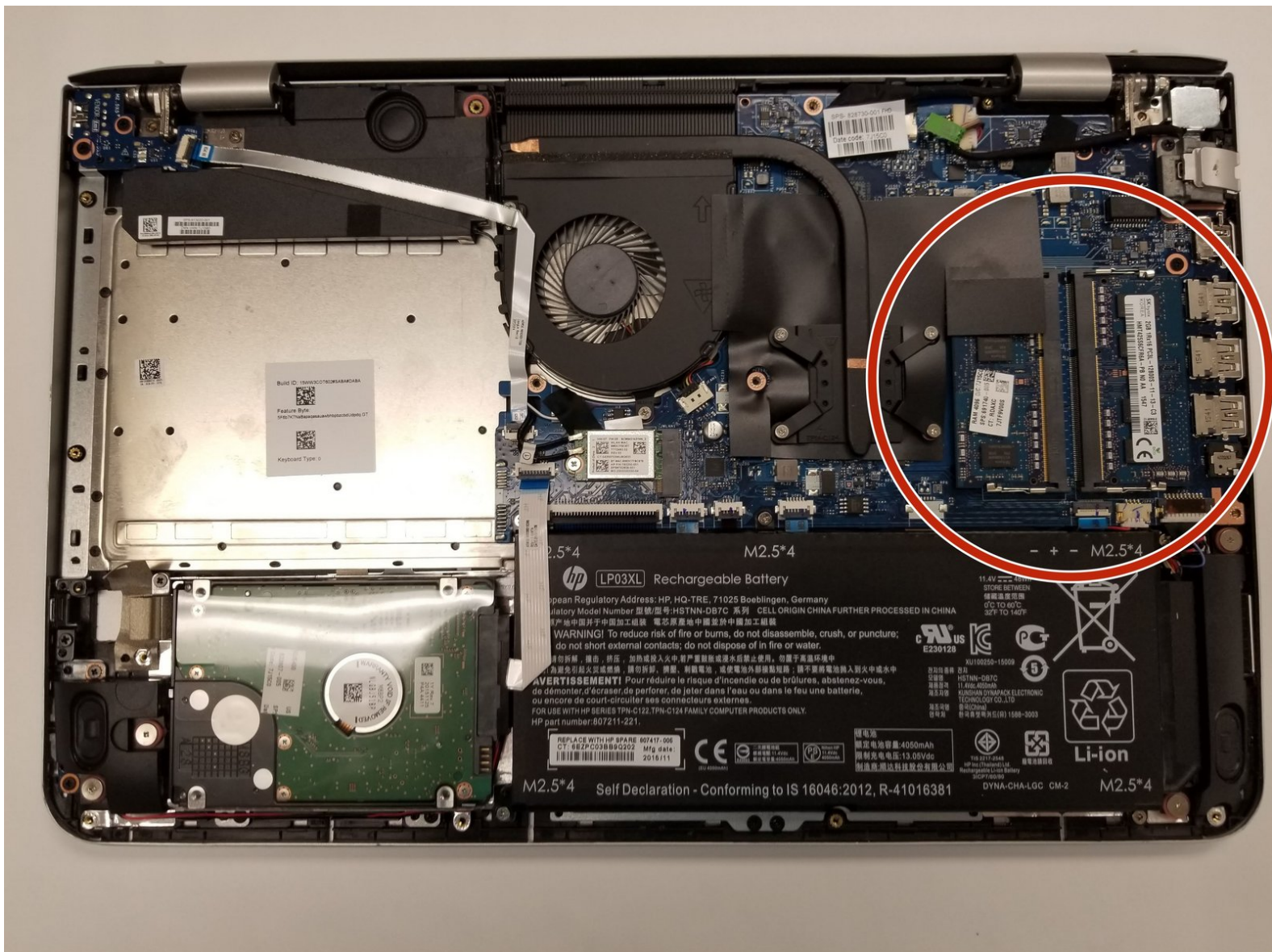




HP Envy m6-p114dx Ram Replacement

Replace or add additional ram

Written By: Taylor Cheney



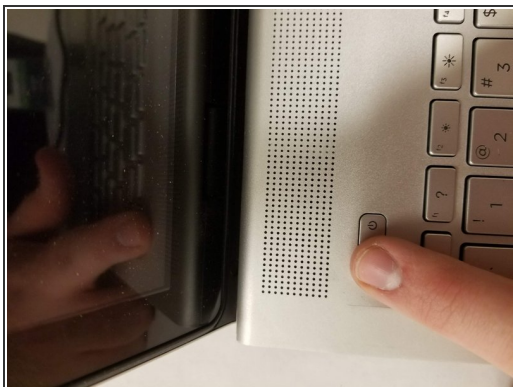
INTRODUCTION

In this guide, you will learn how to access your ram in order for you to either replace or add additional memory to your HP Envy m6-p114dx.

TOOLS:

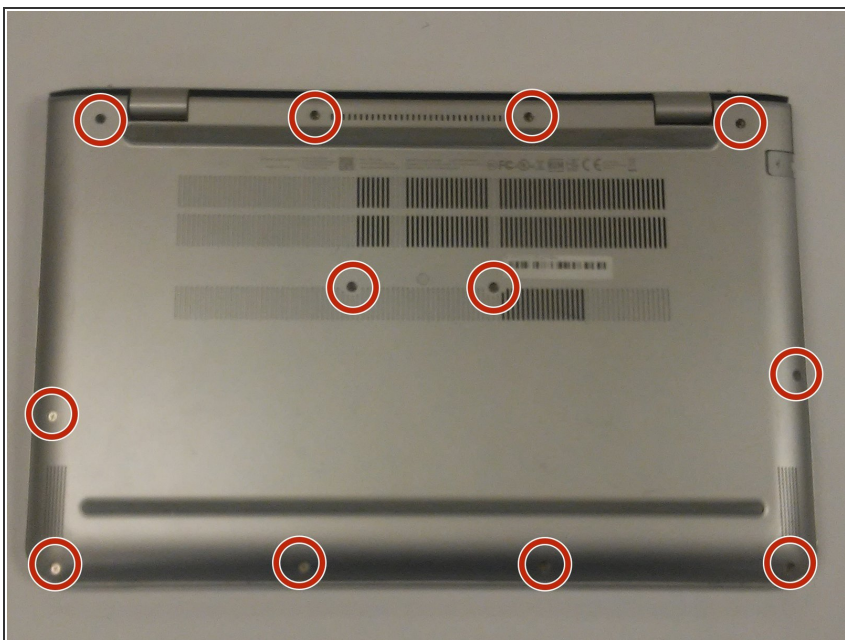
- [Phillips #1 Screwdriver](#) (1)
 - [iFixit Opening Tools](#) (1)
-

Step 1 — HP Envy m6-p114dx Back panel



- Power the device off, unplug it, and ground yourself.

Step 2



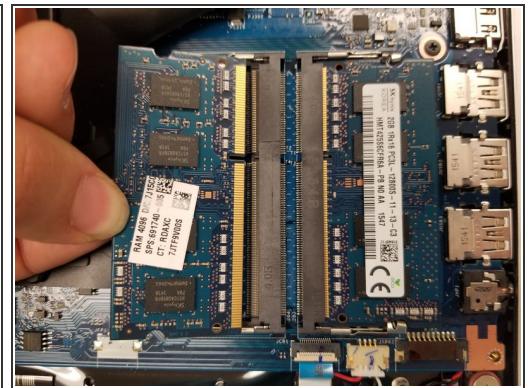
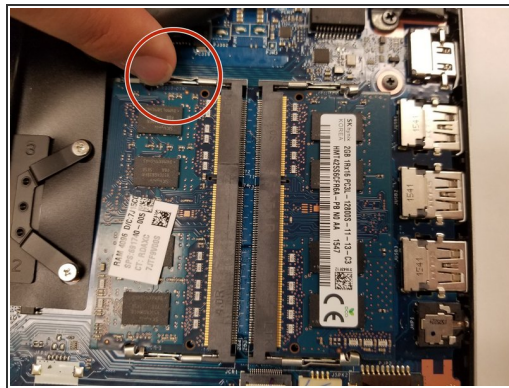
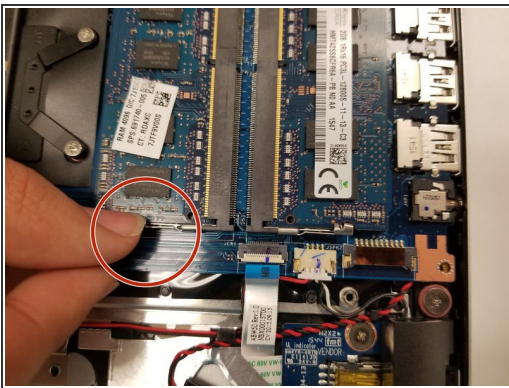
- Remove the twelve screws in the back case using a Phillips #1 screwdriver.

Step 3



- Carefully wedge an iFixit opening tool under the cover and slide it alongside the case to ensure that all clips are un-clipped.

Step 4 — Ram



- There will be two metal tabs on the side of the stick, carefully push down the stick then push the clips to the side to detach it from the slot
- Remove the RAM by pulling it directly out of the port.

Step 5



- Insert RAM stick all the way into the slot, lining up the groove in the stick.
- Press firmly down until the tabs click into place

To reassemble your device, follow these instructions in reverse order.