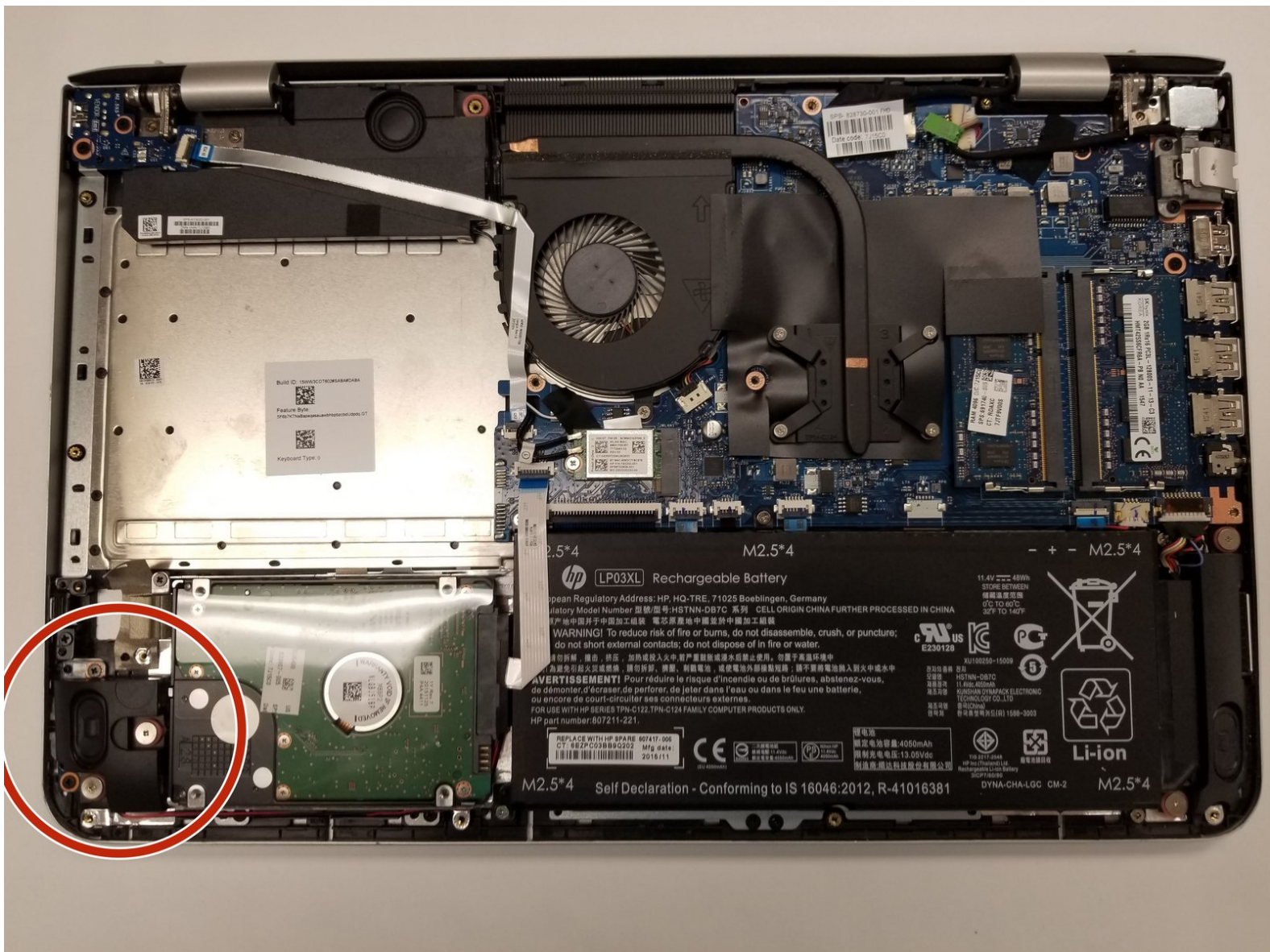




HP Envy m6-p114dx Speaker Replacement

Removing the HP Envy m6-p114dx speaker in order to access the Hard drive's screws more easily.

Written By: Shad Padilla



INTRODUCTION

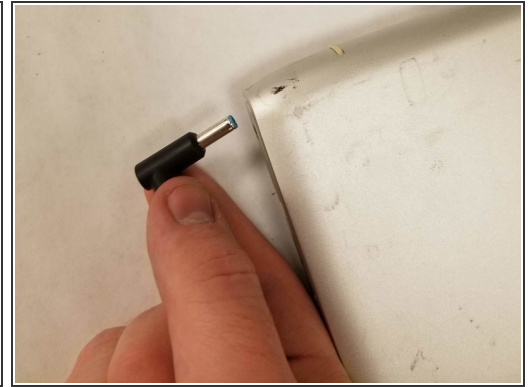
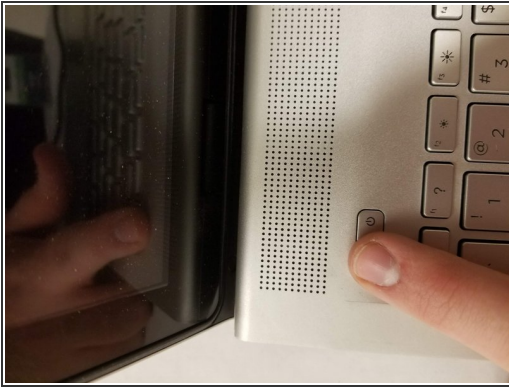
This step will show you how to remove the speaker on the HP Envy m6-p114dx with this step you can either replace the speaker if it has died or to remove it to help in the removal of the hard drive.



TOOLS:

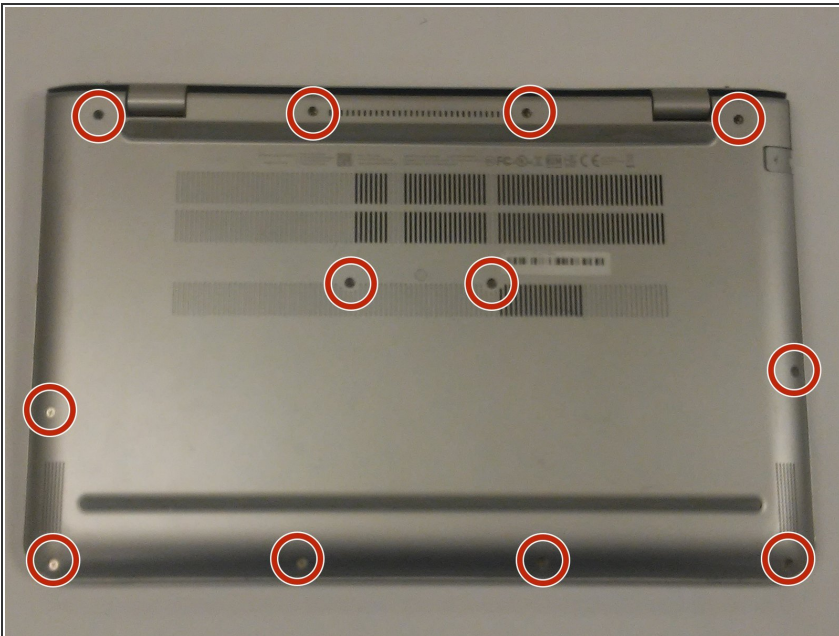
- [Phillips #1 Screwdriver](#) (1)
 - [iFixit Opening Tools](#) (1)
 - [Phillips #0 Screwdriver](#) (1)
-

Step 1 — HP Envy m6-p114dx Back panel



- Power the device off, unplug it, and ground yourself.

Step 2



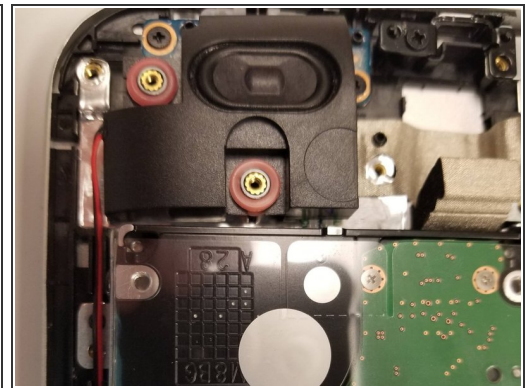
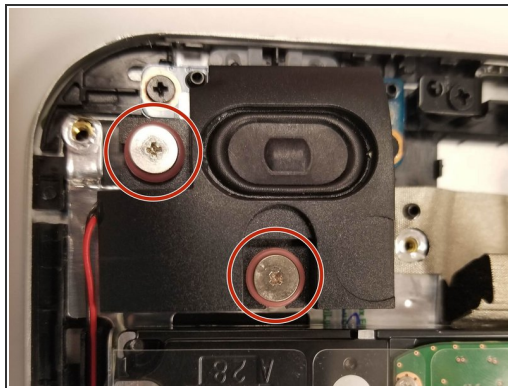
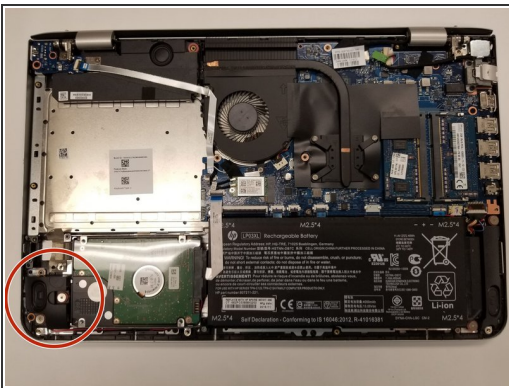
- Remove the twelve screws in the back case using a Phillips #1 screwdriver.

Step 3



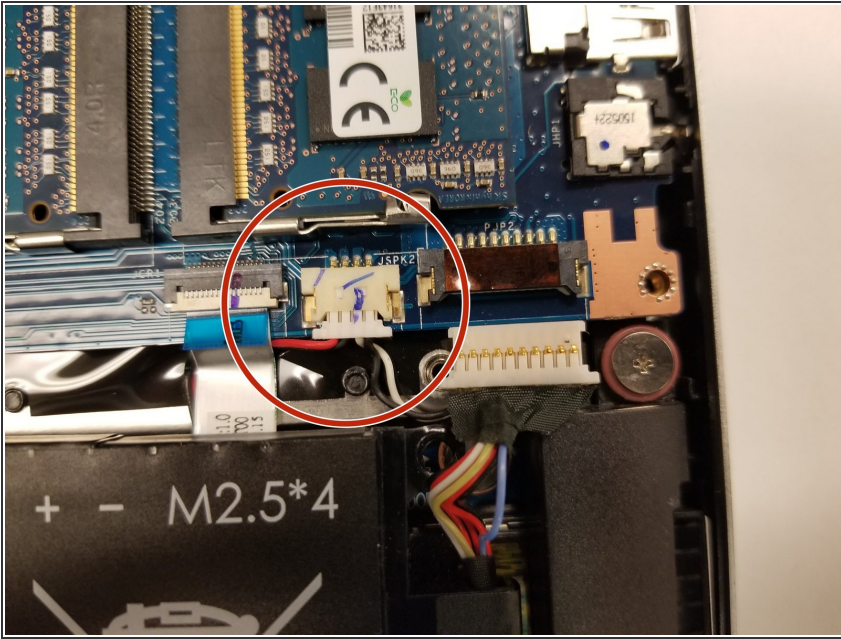
- Carefully wedge an iFixit opening tool under the cover and slide it alongside the case to ensure that all clips are un-clipped.

Step 4 — Speaker



- Unscrew the two screws that have a pink spacer below them with a Phillips #0 screwdriver.
- Lift directly up to remove the main speaker.
- Gently pull the wire out of the plastic track that it's set in.

Step 5



- Follow the cable around the inside of the case and remove the cable to the main board
- Once this is removed you can fully remove the speaker!

To reassemble your device, follow these instructions in reverse order.