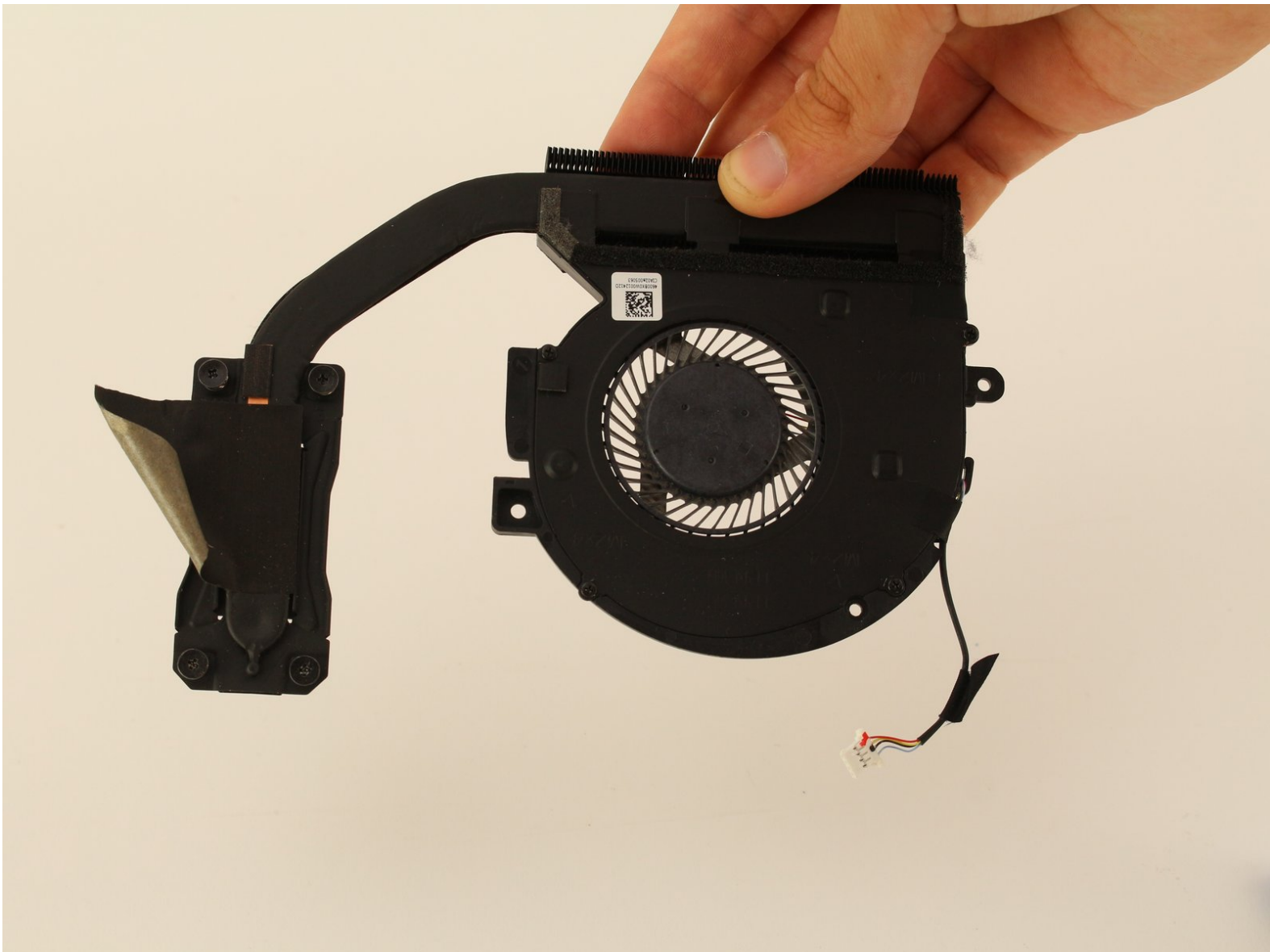




HP Envy x360 15-bp143cl Fan Replacement

How to replace the fan on an HP Envy x360 15-bp143cl laptop.

Written By: Spencer Berkins



INTRODUCTION

Use this guide to replace the fan in an HP Envy x360 15-bp143cl. The laptop is also identified by its model number, 3TS71UAR#ABA.

Several factors can cause a laptop to overheat. Review the [HP Envy x360 15-bp143cl Troubleshooting Page](#) to check which factors may be causing the laptop to overheat. If the laptop continues to become very hot, it may be caused by a broken or faulty fan.

Turn the laptop off and disconnect it from any power supply before starting the replacement process.

Wear the Anti-Static Wrist Strap before work near the motherboard to prevent any damage.



TOOLS:

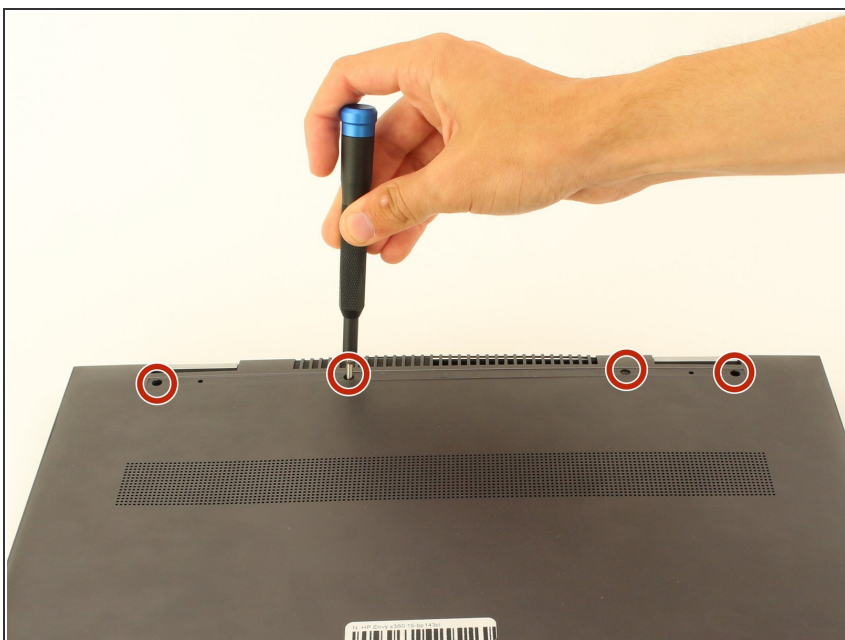
- [Phillips Head Screwdriver: Size PH1](#) (1)
 - [T5 Torx Screwdriver](#) (1)
 - [iFixit Opening Tools](#) (1)
 - [Anti-Static Wrist Strap](#) (1)
-

Step 1 — Fan



- Flip the laptop over.
- Peel off the rubber strip closest to the hinges.

Step 2



- Use a Phillips #1 screwdriver (PH1 bit) to remove the four 6.5mm screws that were underneath the rubber strip.

Step 3



- Use a Torx T5 screwdriver (T5 bit) to remove the three 5mm screws near the bottom edge of the laptop.

Step 4



- Lift the back panel to remove it from the laptop.
- ⓘ Use an opening tool to pry open the back panel if it does not easily lift apart.

Step 5



- Detach the tape securing the heatsink to the laptop.

Step 6



- Use a Phillips #1 screwdriver (PH1 bit) to loosen the four screws securing heatsink.
- ❗ The screws do not detach from the heatsink.

Step 7



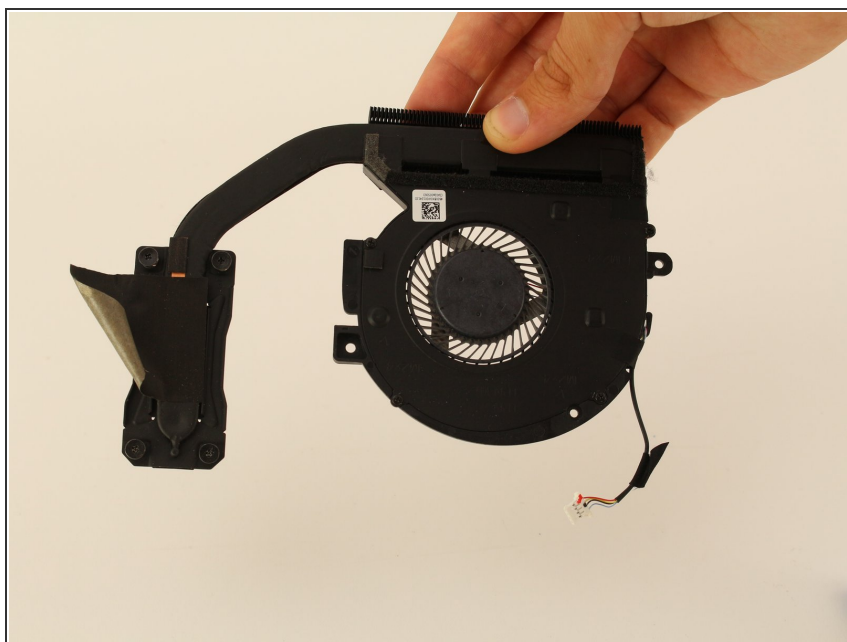
- Use a Phillips #1 screwdriver (PH1 bit) to remove the three 4mm screws from the fan.

Step 8



- Detach the cable connecting the fan and laptop by pulling from the white connector.

Step 9



- Remove the fan from the laptop.
- During reinstallation, be sure to remove old thermal paste on both the heatsink and CPU contact points. Then, reapply thermal paste using our [How to Apply Thermal Paste guide](#).

To reassemble your device, follow these instructions in reverse order.