



# HP Envy x360 15-bp143cl Hard Drive Replacement

How to replace the hard drive in an HP Envy x360 15-bp143cl laptop.

Written By: Spencer Berkins



## INTRODUCTION

Use this guide to replace the hard drive in an HP Envy x360 15-bp143cl. The laptop is also identified by its model number, 3TS71UAR#ABA.

The HP Envy x360 15-bp143cl used for this guide was missing its original hard drive. Therefore, some steps in this guide are mimed. The user can modify or replace the given storage unit.

Turn the laptop off and disconnect it from any power supply before starting the replacement process.

Wear the Anti-Static Wrist Strap before working near the motherboard to prevent any damage.



### TOOLS:

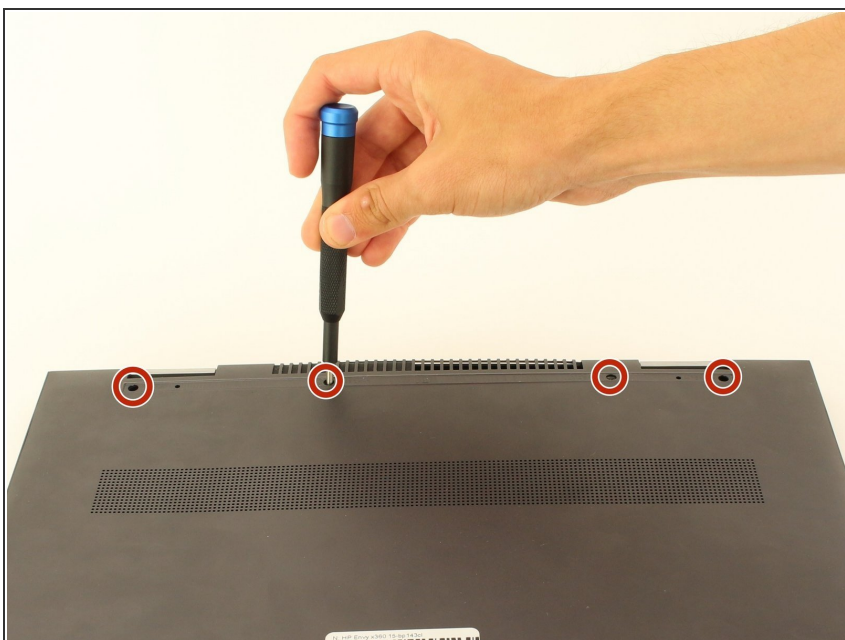
- [Phillips #1 Screwdriver](#) (1)
  - [T5 Torx Screwdriver](#) (1)
  - [iFixit Opening Tools](#) (1)
  - [Anti-Static Wrist Strap](#) (1)
-

## Step 1 — Hard Drive



- Flip the laptop over.
- Peel off the rubber strip closest to the hinges.

## Step 2



- Use a Phillips #1 screwdriver (PH1 bit) to remove the four 6.5mm screws that were underneath the rubber strip.

## Step 3



- Use a Torx T5 screwdriver (T5 bit) to remove the three 5mm screws near the bottom edge of the laptop.

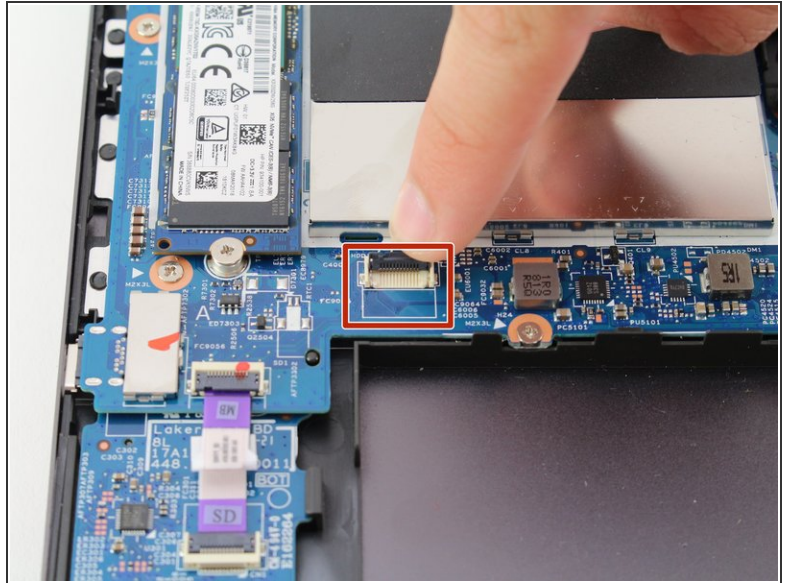
## Step 4



- Lift the back panel to remove it from the laptop.
- ⓘ Use an opening tool to pry open the back panel if it does not easily lift apart.



## Step 5



- Lift the black tab securing the hard drive connecting cable to the laptop to remove the cable.

## Step 6



- Lift the hard drive from its slot.
- ⓘ If the hard drive is attached using adhesive, use an opening tool to pry it from the laptop.

To reassemble your device, follow these instructions in reverse order.