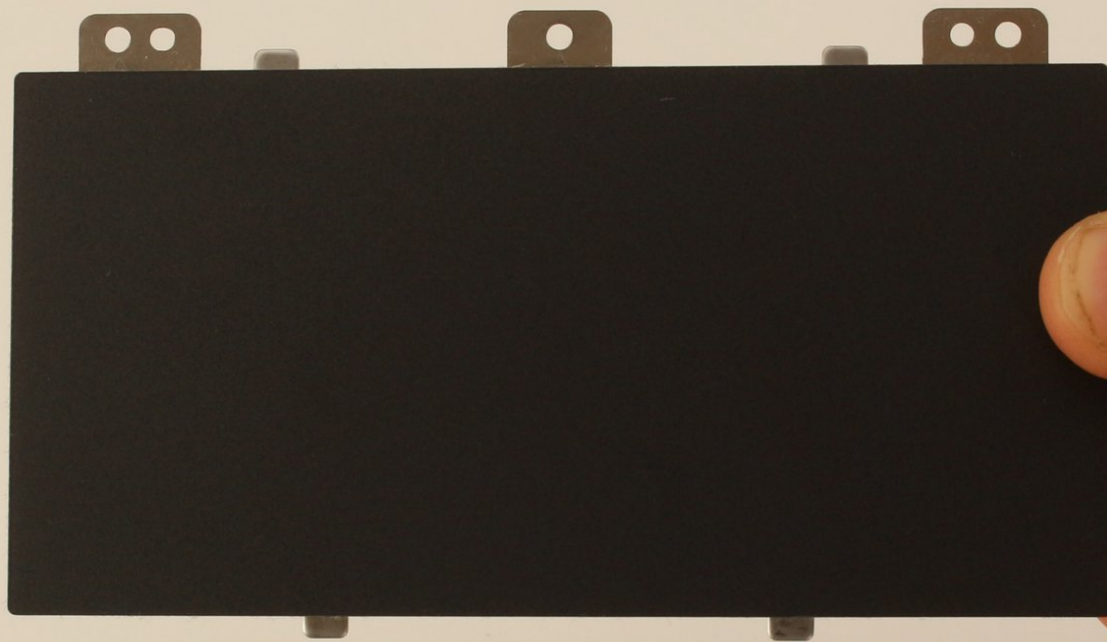




# HP Envy x360 15-bp143cl Touchpad Replacement

How to replace the touchpad on an HP Envy x360 15-bp143cl laptop.

Written By: Spencer Berkins



## INTRODUCTION

Use this guide to replace a broken touch pad in an HP Envy x360 15-bp143cl. The laptop is also identified by its model number, 3TS71UAR#ABA.

A broken touch pad will be unresponsive and will not allow a user to move the cursor without an external mouse. If this is the case, the touch pad will need to be replaced.

Before using this replacement guide, review the [HP Envy x360 15-bp143cl Touch pad Troubleshooting](#) page to make sure the touch pad is not disabled. You can use this page to check if any other factor is causing the touch pad not to respond.

Turn the laptop off and disconnect it from any power supply before starting the replacement process.

Wear the Anti-Static Wrist Strap before working near the motherboard to prevent any damage.



### TOOLS:

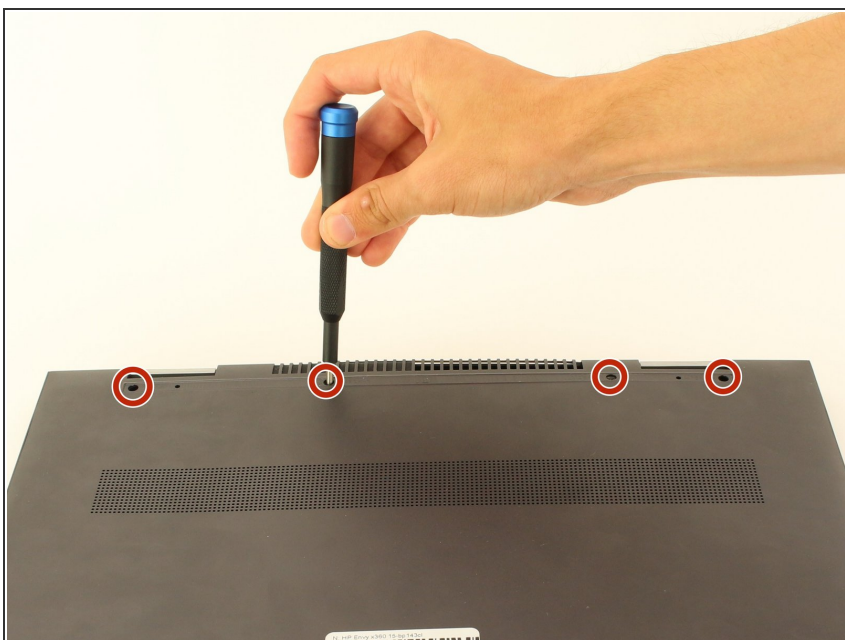
- [Phillips Head Screwdriver: Size PH1](#) (1)
  - [T5 Torx Screwdriver](#) (1)
  - [iFixit Opening Tools](#) (1)
  - [Spudger](#) (1)
  - [Anti-Static Wrist Strap](#) (1)
-

## Step 1 — Battery



- Flip the laptop over.
- Peel off the rubber strip closest to the hinges.

## Step 2



- Use a Phillips #1 screwdriver (PH1 bit) to remove the four 6.5mm screws that were underneath the rubber strip.

## Step 3



- Use a Torx T5 screwdriver (T5 bit) to remove the three 5mm screws near the bottom edge of the laptop.

## Step 4



- Lift the back panel to remove it from the laptop.
- ⓘ Use an opening tool to pry open the back panel if it does not easily lift apart.



## Step 5



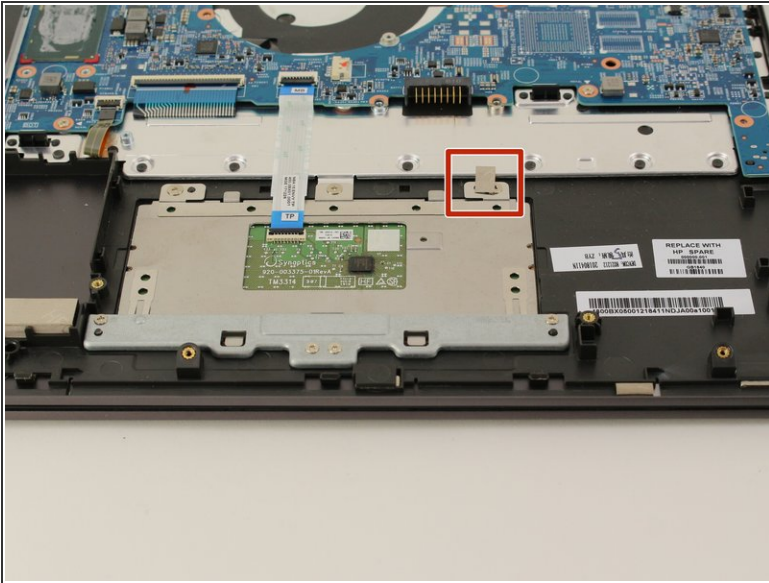
- Use a Phillips #1 screwdriver (PH1) to remove the seven 4mm screws indicated by the gray arrows on the battery.

## Step 6



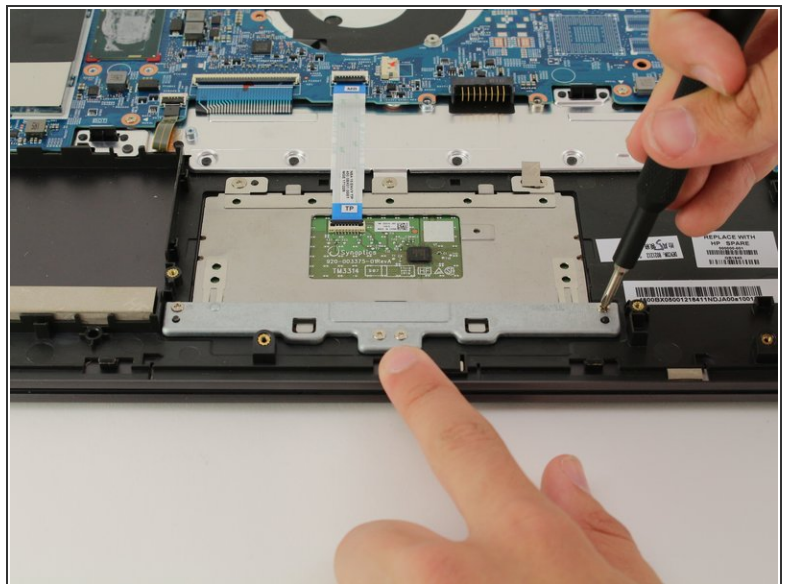
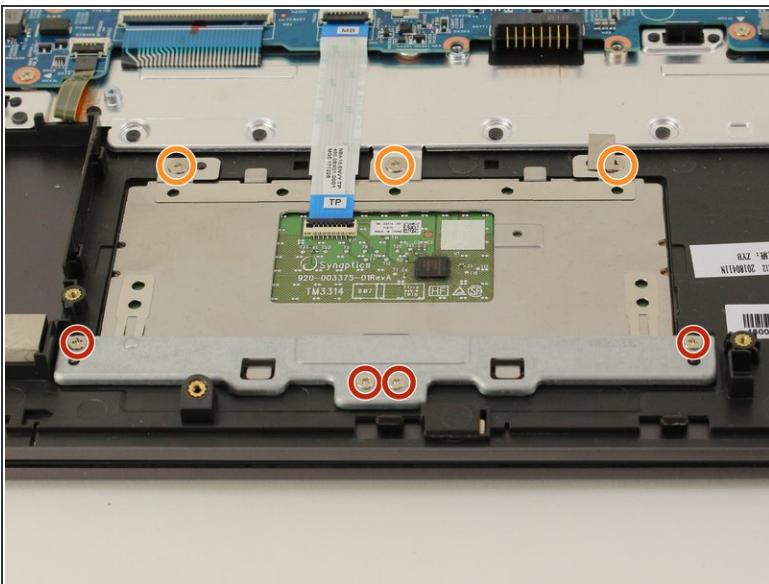
- Pull the battery from the connecting port and lift to remove it from the laptop.

## Step 7 — Touchpad



- Use a spudger to peel the silver tape near the top right side of the touch pad.

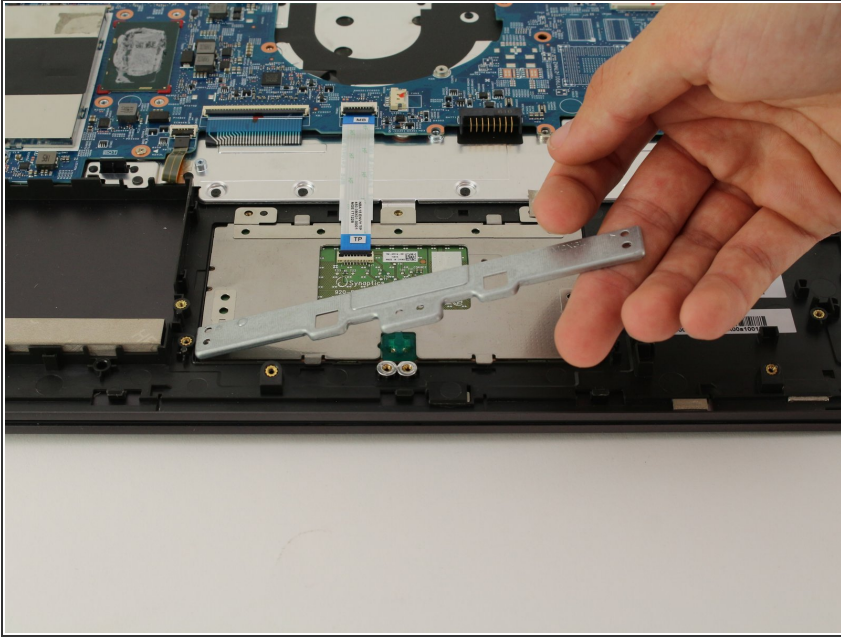
## Step 8



- Use a Phillips #1 screwdriver (PH1 bit) to remove the four 4mm screws securing the bottom metal bar.
- Use a Phillips #1 screwdriver (PH1 bit) to remove the three 1mm screws securing the top of the touch pad.

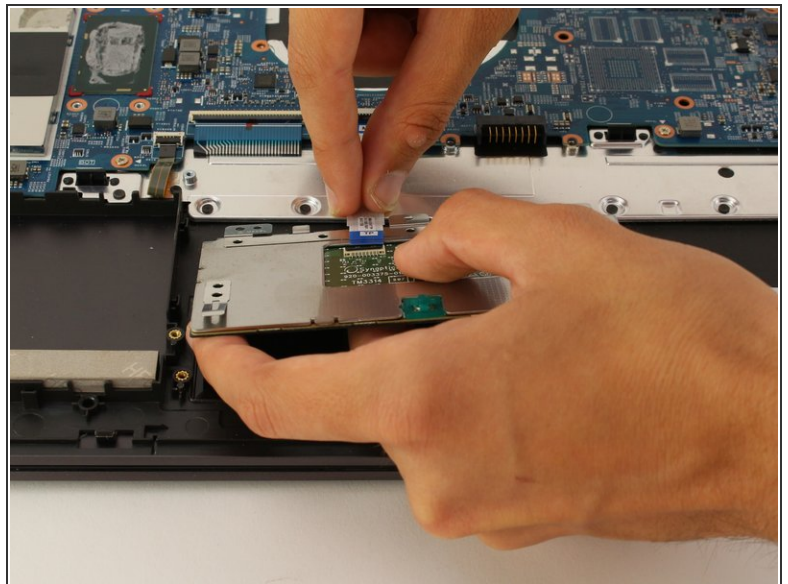
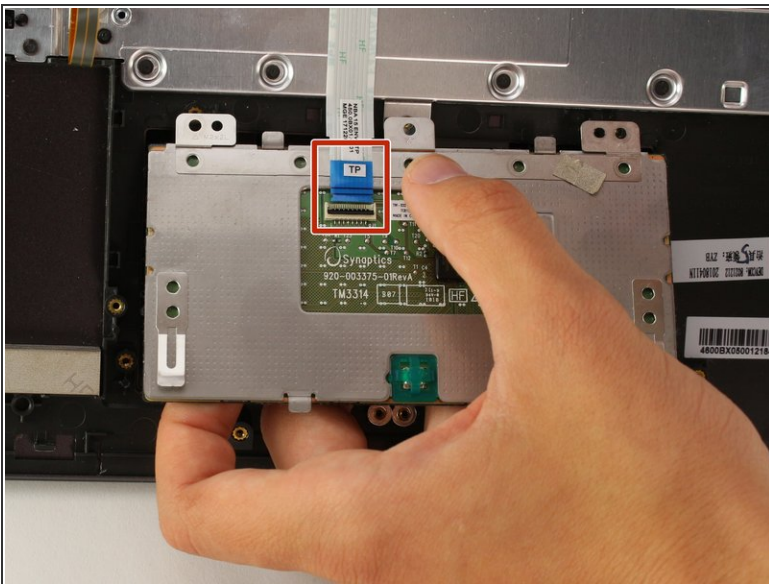


## Step 9



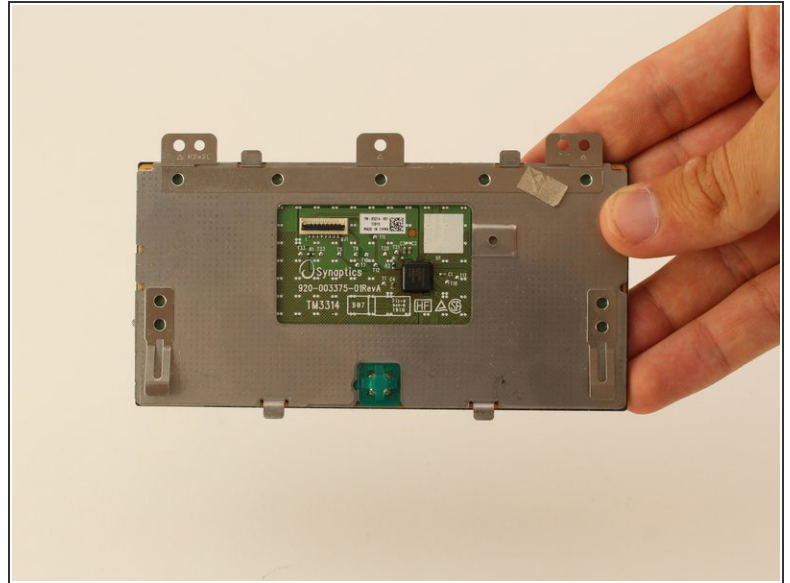
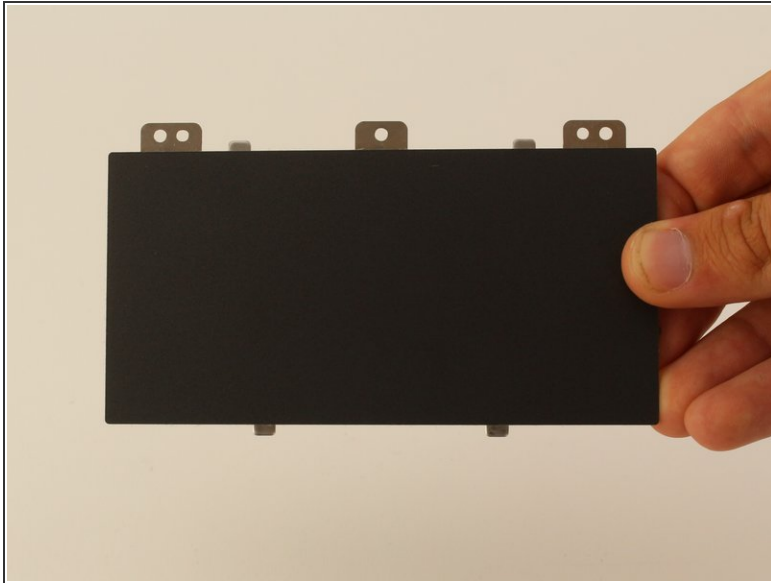
- Remove the metal cover by lifting it away from the laptop.

## Step 10



- Lift the bottom side of the touch pad.
- Lift the black tab that secures the touch pad connecting cable to the laptop.
- Pull the cable from the touch pad connecting port.

## Step 11



- Lift the touch pad to remove it.

To reassemble your device, follow these instructions in reverse order.