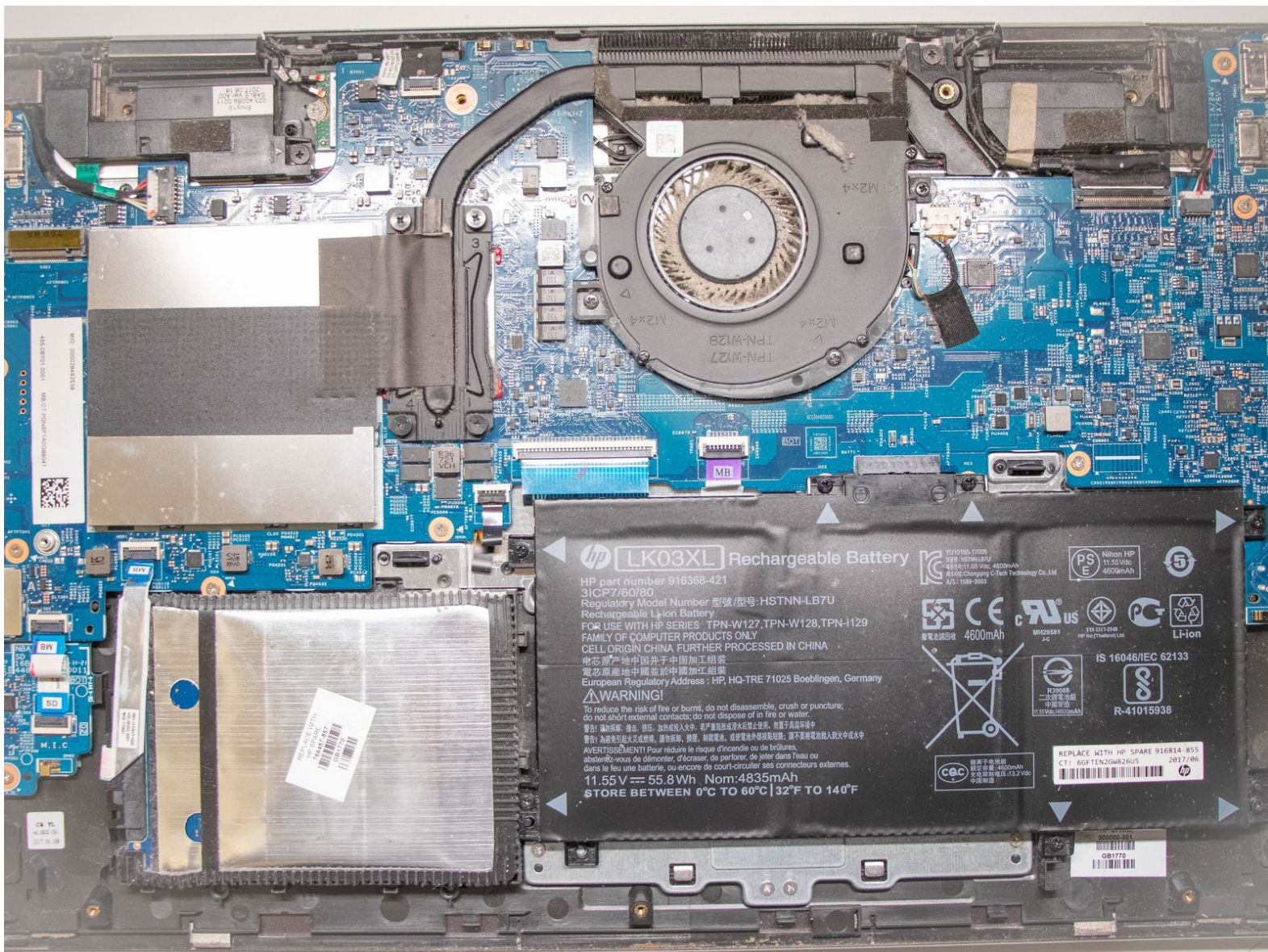




# HP Envy x360 15m-bq021dx Battery Replacement

Removing HP Envy x360 battery.

Written By: Hunter Reihart



---

# INTRODUCTION

This guide covers the HP Envy x360 battery removal.

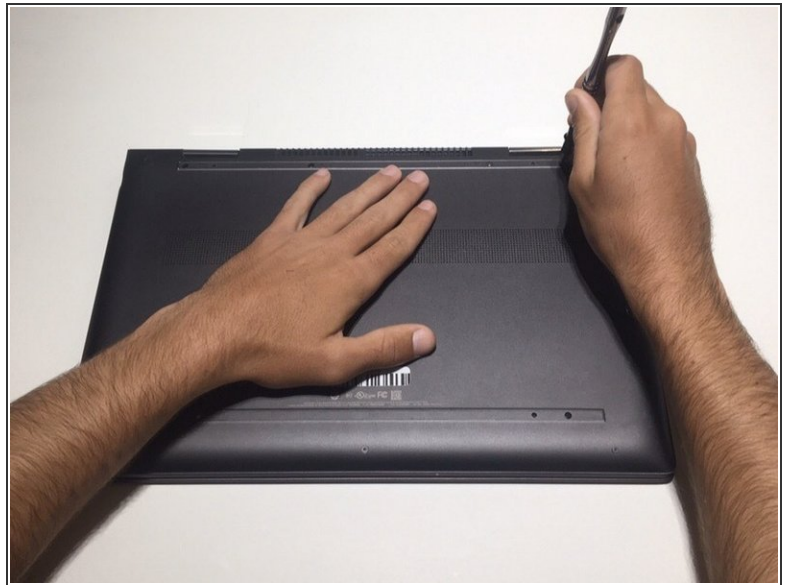
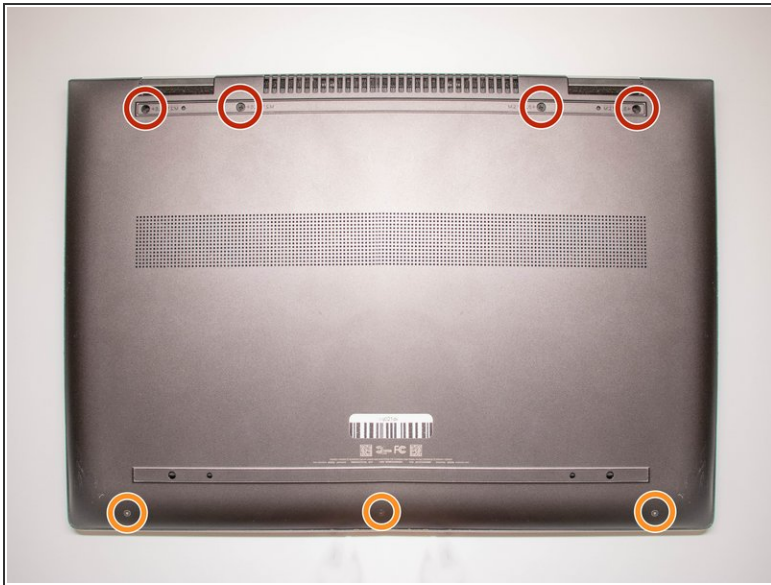


## TOOLS:

- [Phillips #0 Screwdriver](#) (1)
  - [T5 Torx Screwdriver](#) (1)
  - [Spudger](#) (1)
  - [Suction Handle](#) (1)
-



## Step 1 — Battery



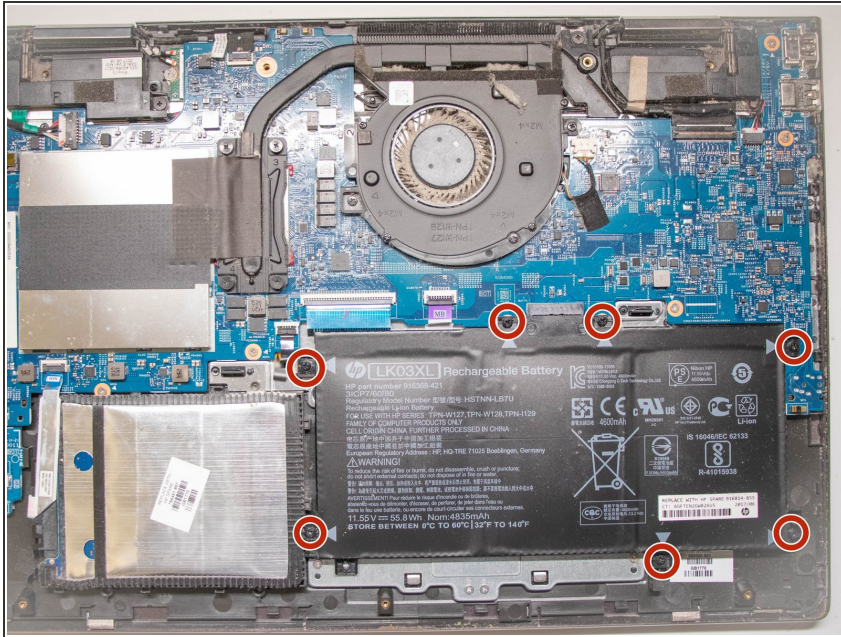
- On the back panel of the device, remove the four (4) M2.5xL6 screws at the top of the photo using a Phillips #0 screwdriver.
- Unscrew the three (3) screws at the bottom of the photo using a T5 Torx screwdriver.

## Step 2



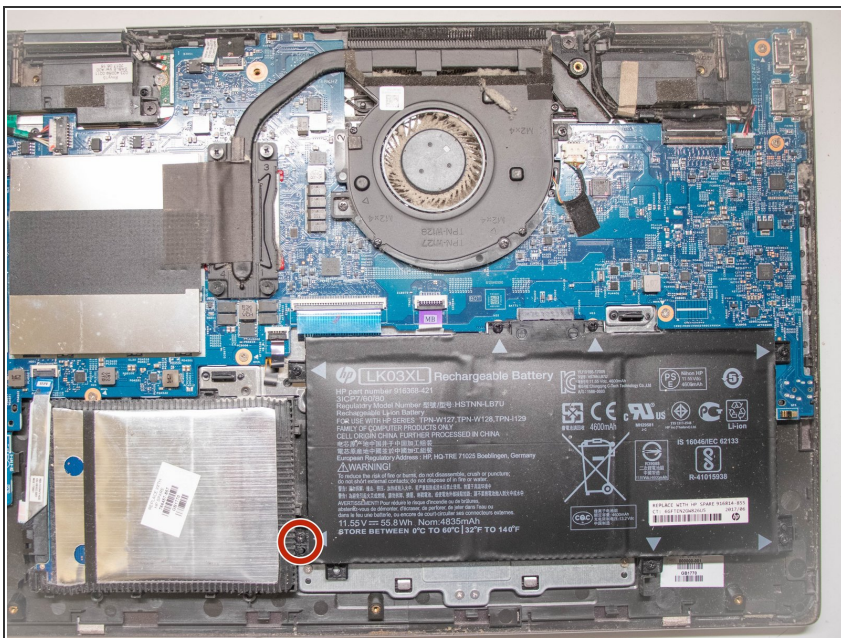
- To remove the back cover, use the black spudger to lift up on the edges of the cover.
- Use a suction cup to assist in lifting the back cover

## Step 3



- Use the Philips #0 screwdriver to remove six (6) M2.0x3.2 screws from battery.

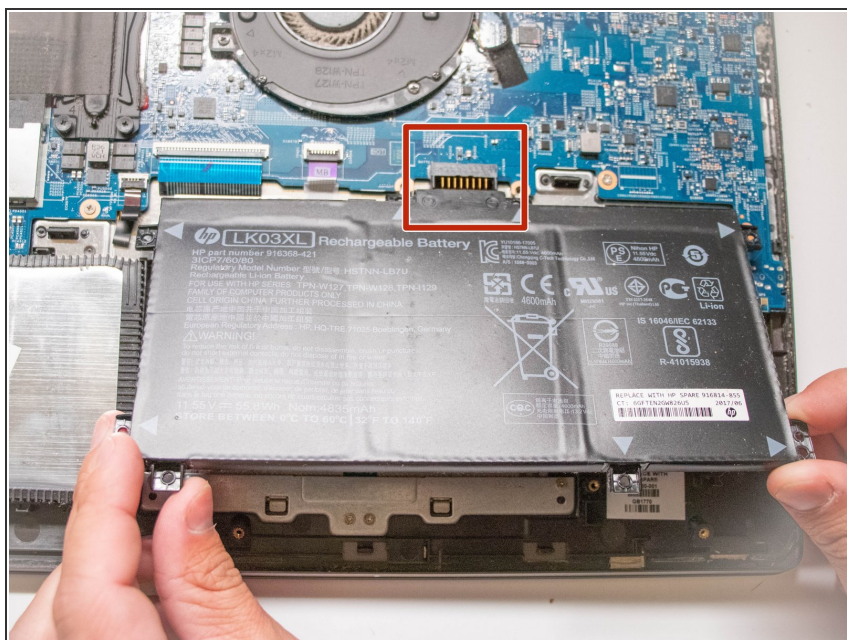
## Step 4



- Using the Philips #0 screwdriver, remove the final screw from the battery connected to the SSD storage unit.



## Step 5



- Lift and pull the front of the battery up and out (away from the connector) to remove.

To reassemble your device, follow these instructions in reverse order.