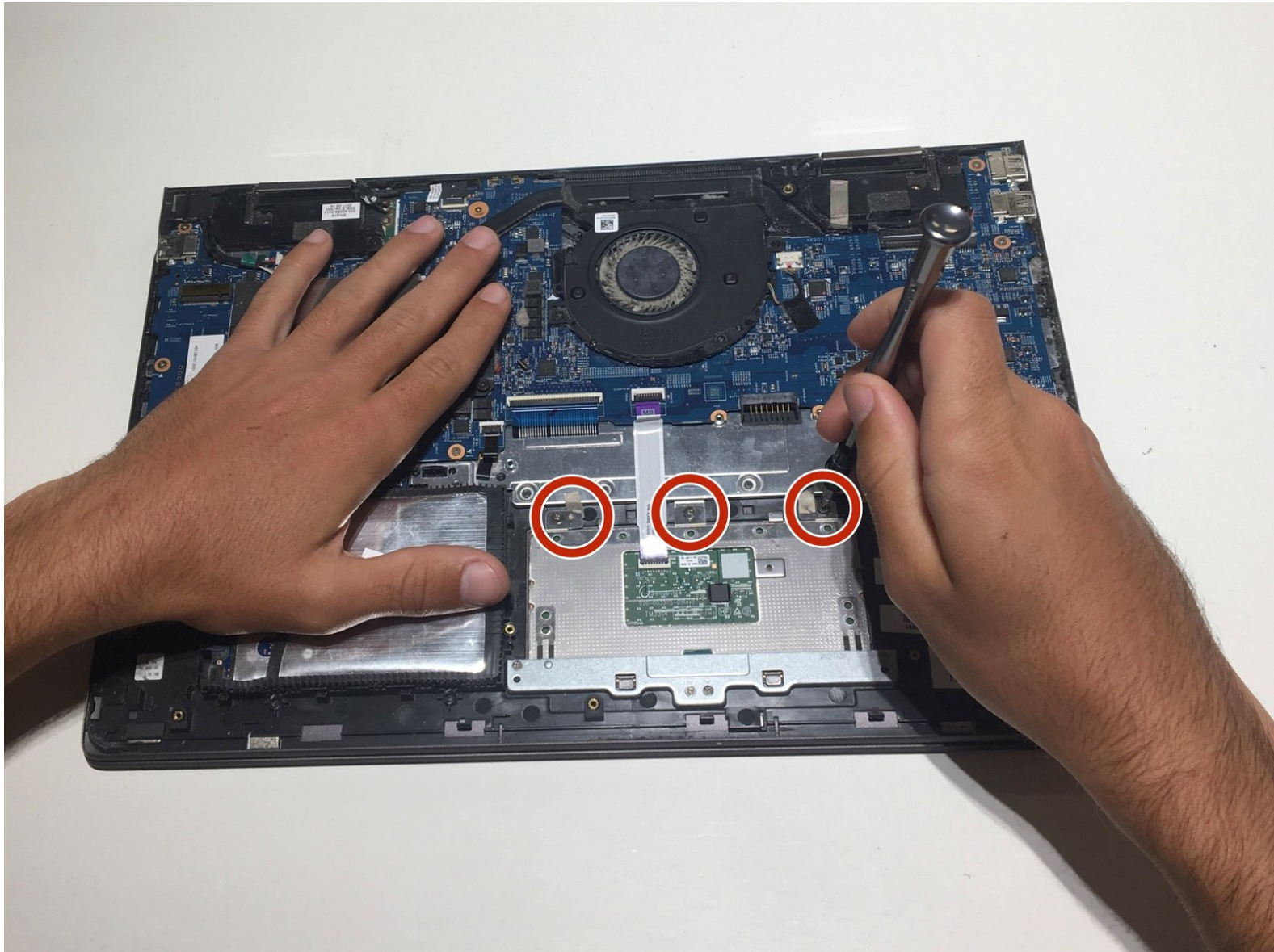




HP Envy x360 15m-bq021dx Touch pad Replacement

Removing HP Envy x360 15m-bq021dx touch pad.

Written By: Samuel Kirkland



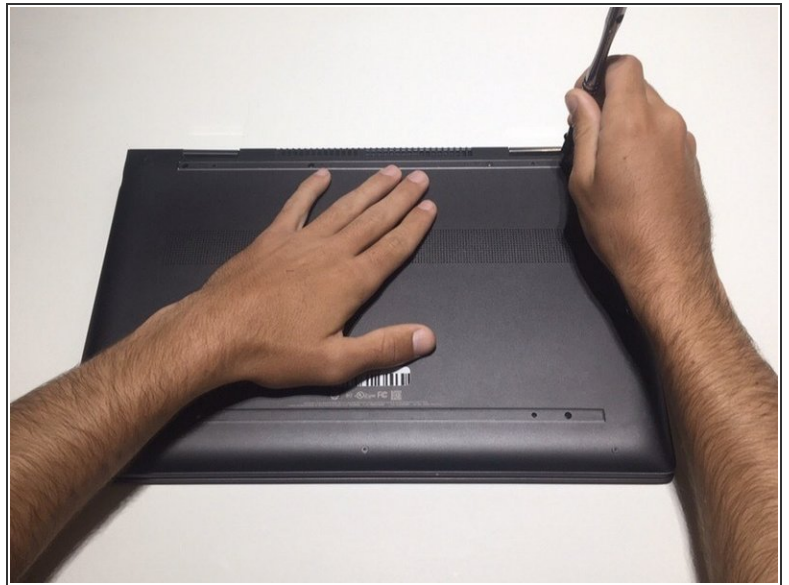
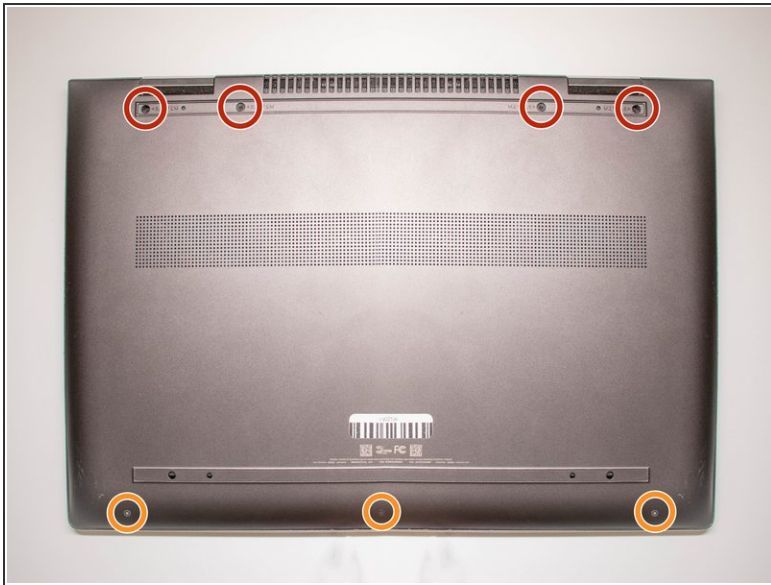
INTRODUCTION

This guide covers the HP Envy x360 15m-bq021dx touch pad removal.

TOOLS:

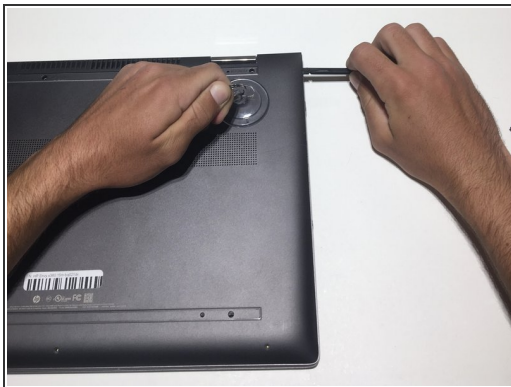
- [T5 Torx Screwdriver](#) (1)
 - [Spudger](#) (1)
 - [Suction Handle](#) (1)
 - [Phillips #0 Screwdriver](#) (1)
 - [iFixit Opening Tool](#) (1)
-

Step 1 — Battery



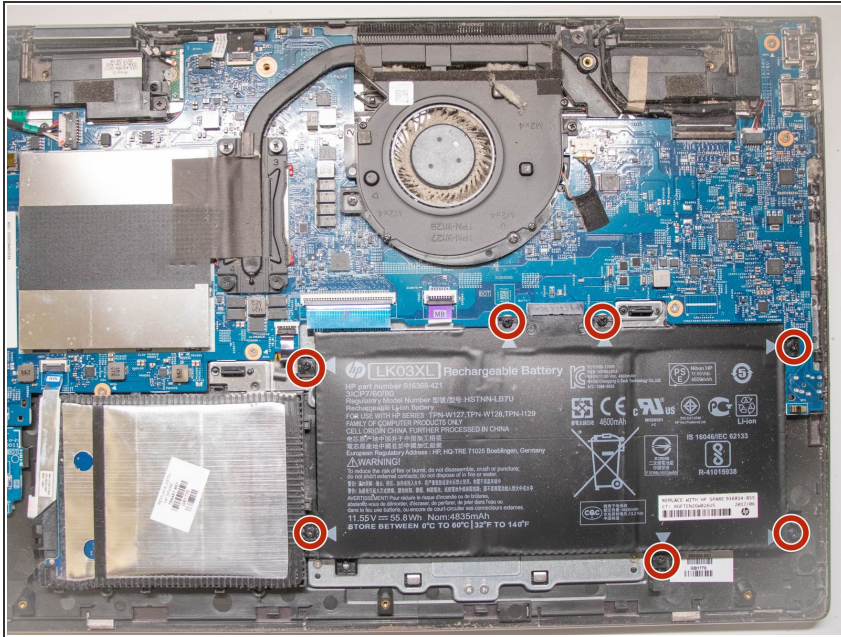
- On the back panel of the device, remove the four (4) M2.5xL6 screws at the top of the photo using a Phillips #0 screwdriver.
- Unscrew the three (3) screws at the bottom of the photo using a T5 Torx screwdriver.

Step 2



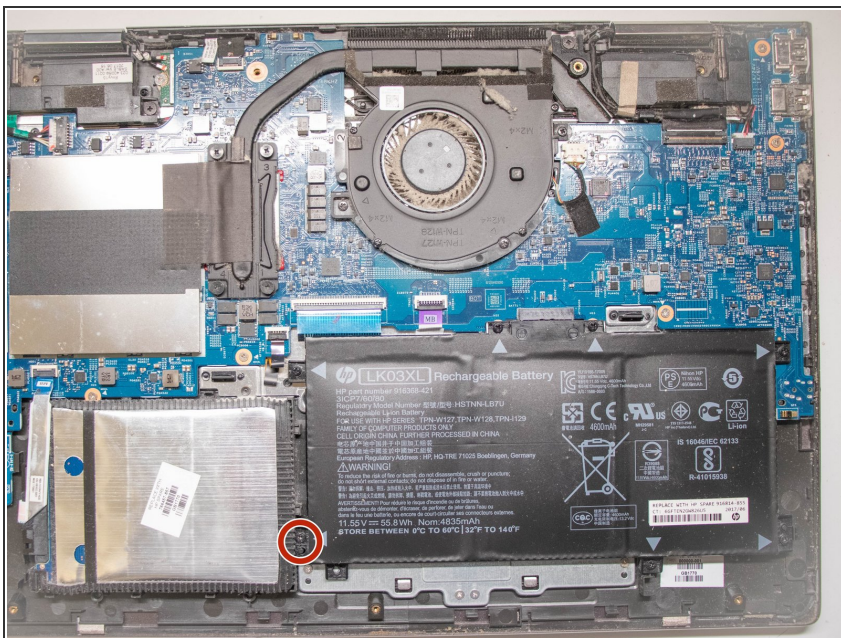
- To remove the back cover, use the black spudger to lift up on the edges of the cover.
- Use a suction cup to assist in lifting the back cover

Step 3



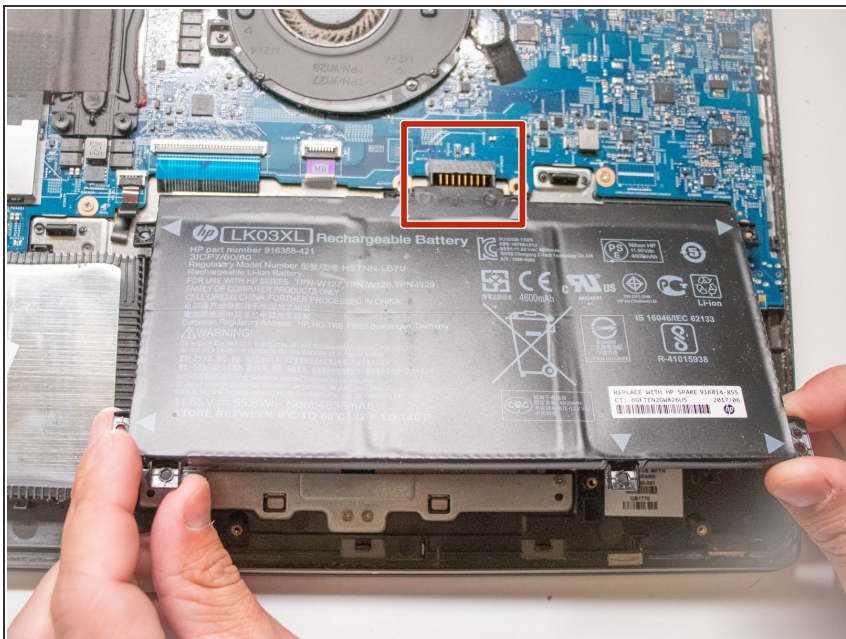
- Use the Philips #0 screwdriver to remove six (6) M2.0x3.2 screws from battery.

Step 4



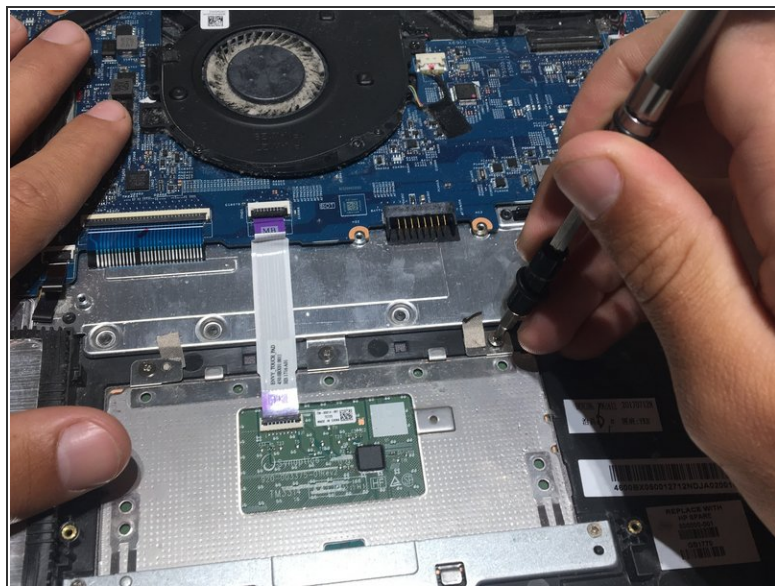
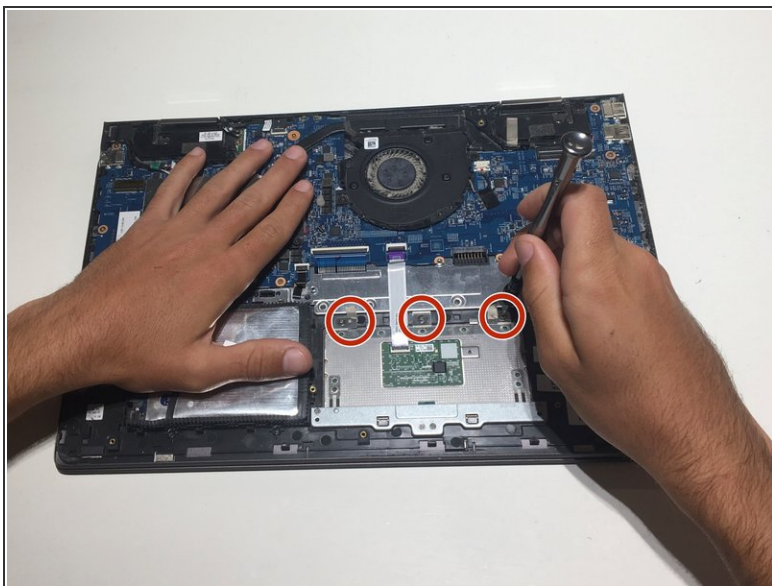
- Using the Philips #0 screwdriver, remove the final screw from the battery connected to the SSD storage unit.

Step 5



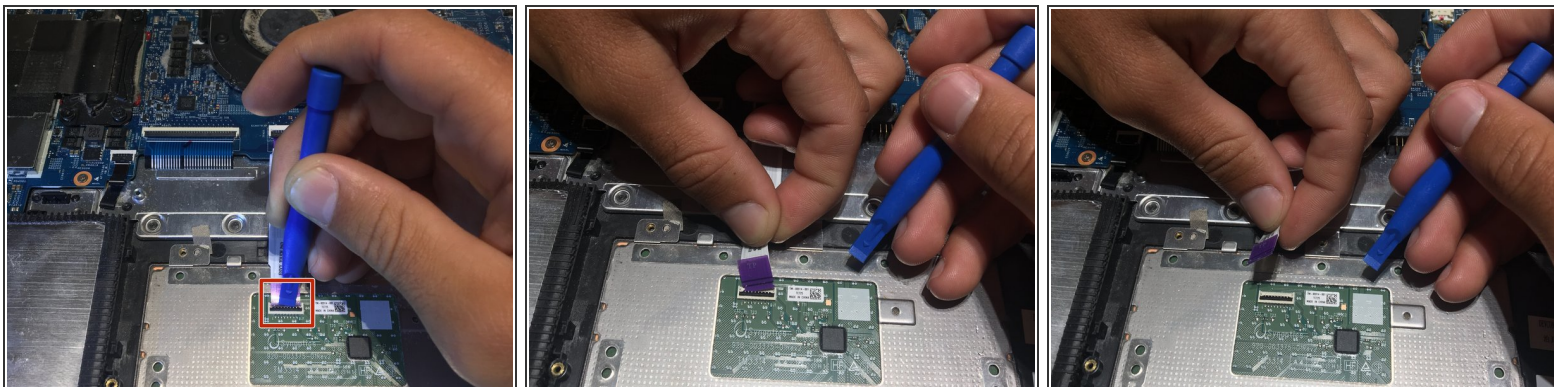
- Lift and pull the front of the battery up and out (away from the connector) to remove.

Step 6 — Touch pad



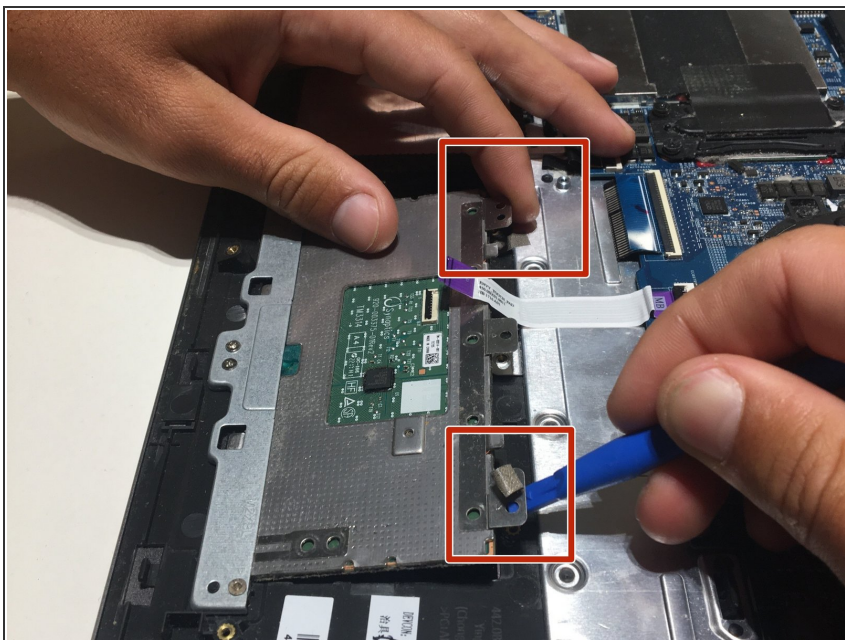
- Remove the three (3) 2.0x3.4 mm screws using a Phillips #0 screwdriver.

Step 7



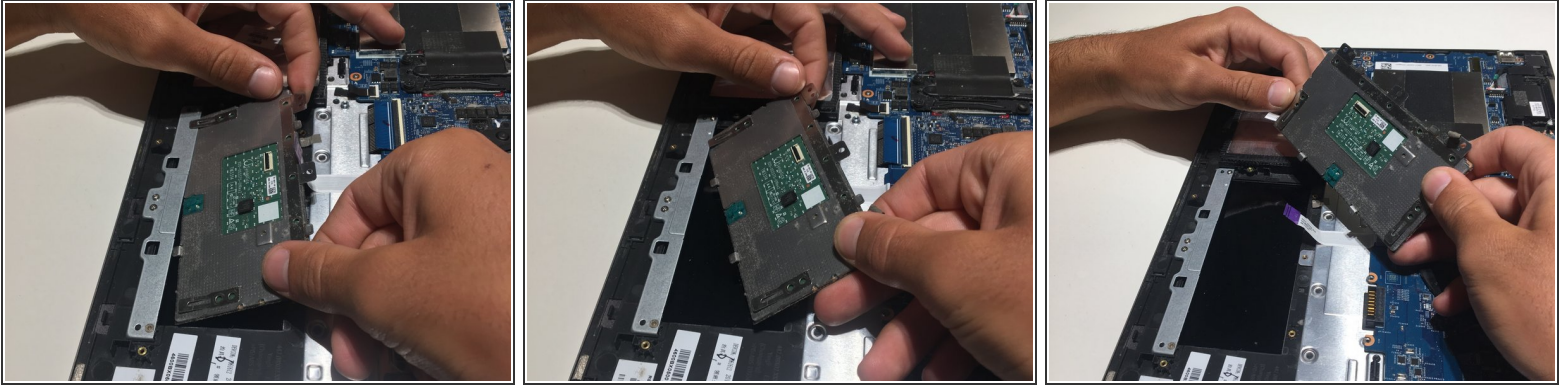
- Use the blue opening tool to detach the purple tab on white strip from the black electrical insert.
- Pull the white strip up and out of the black insert.

Step 8



- Use the blue opening tool to lift the screw tab in order to grasp the touch pad instrument.

Step 9



- In one motion, gently lift and slide the touch pad instrument out of its original place.

To reassemble your device, follow these instructions in reverse order.