



HP Envy x360 m6-aq005dx WiFi Replacement

Use this guide to remove or replace the touchpad of your HP Envy x360 m6-aq005dx.

Written By: Darrin Smiley



INTRODUCTION

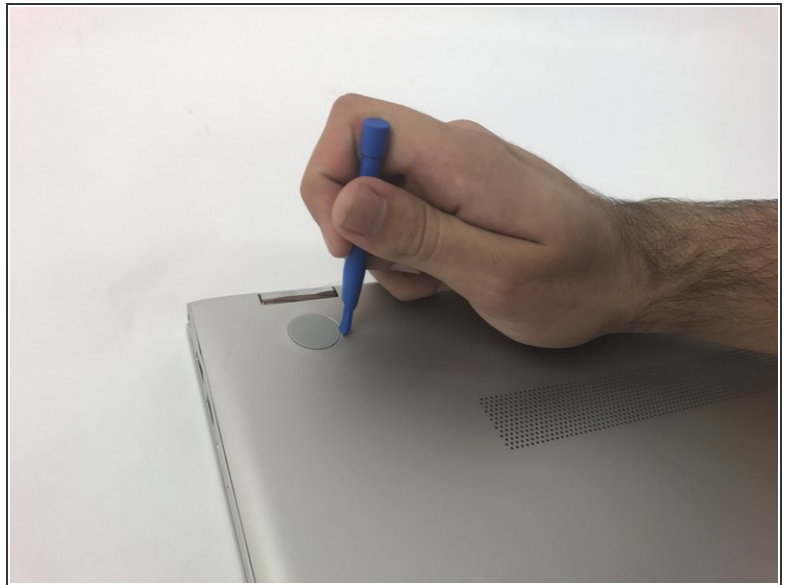
The WiFi is an important part of the laptop's wireless internet connection allowing the device to transmit and receive information over the internet. This guide provides the steps to properly remove the WiFi component.



TOOLS:

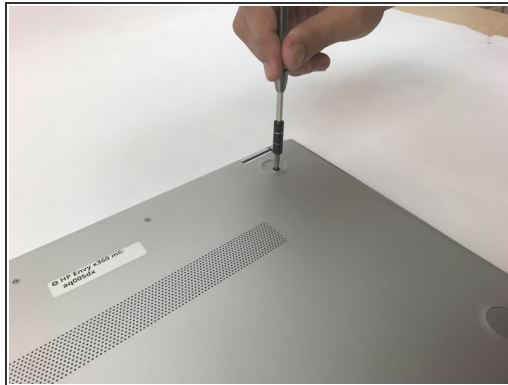
- [iFixit Opening Tools](#) (1)
 - [Philips Head Screwdriver: Size J1](#) (1)
 - [T5 Torx Screwdriver](#) (1)
 - [Phillips #0 Screwdriver](#) (1)
-

Step 1 — Back Panel



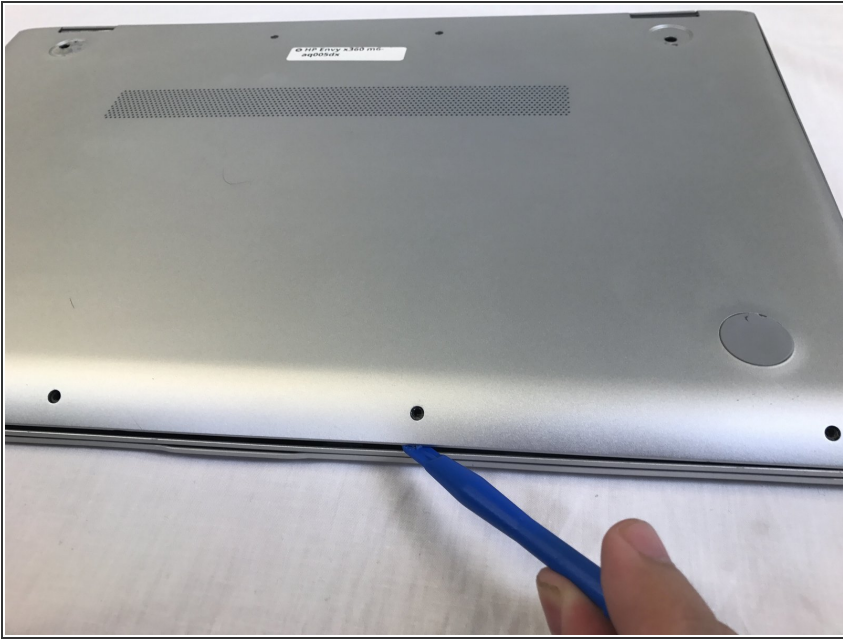
- Use the plastic opening tool to remove the gray rubber pads on the bottom of the laptop. For our device we only needed to remove the two at the top.

Step 2



- Use a Torx T5 screwdriver to remove the six 5.1 mm screws.
- Use a JIS #1 screwdriver to remove the two 7.2mm screws.

Step 3



- Use a plastic opening tool to pry open the case. Go slowly around the edge. You will hear popping noises, such as due to popping open the small joints that keep the cover attached.

Step 4 — WiFi



- ⚠ Battery might cause a small electric shock
- Use tweezers to disconnect the battery from the motherboard.

Step 5



- Use the plastic opening tool to disconnect the two cables attached to the wifi

Step 6



- Use a PH0 tool bit to remove the one 2.8mm screw.

To reassemble your device, follow these instructions in reverse order.