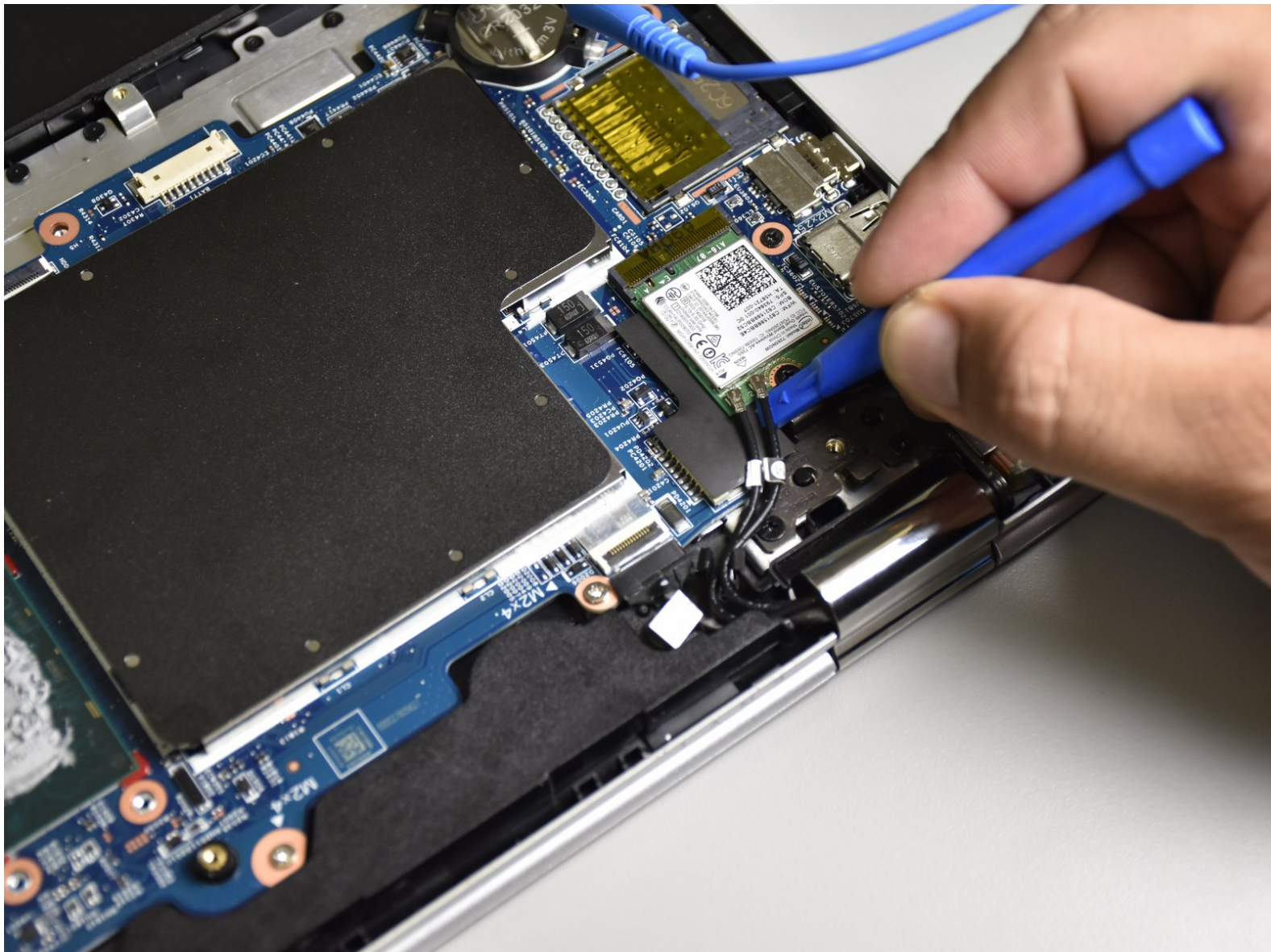




# HP Envy x360 m6-aq103dx Wireless Module Replacement

How to replace the HP Envy x360 m6-aq103dx Wireless Module.

Written By: Joey Chen



---

## INTRODUCTION

This guide is for the replacement of the Wireless Module. You will need a small plastic opening tool and a standard Phillips Head 1 Screwdriver.


---

### TOOLS:

- [Spudger](#) (1)
  - [Phillips #1 Screwdriver](#) (1)
  - [iFixit Opening Tools](#) (1)
  - [T5 Torx Screwdriver](#) (1)
-

## Step 1 — Bottom Cover



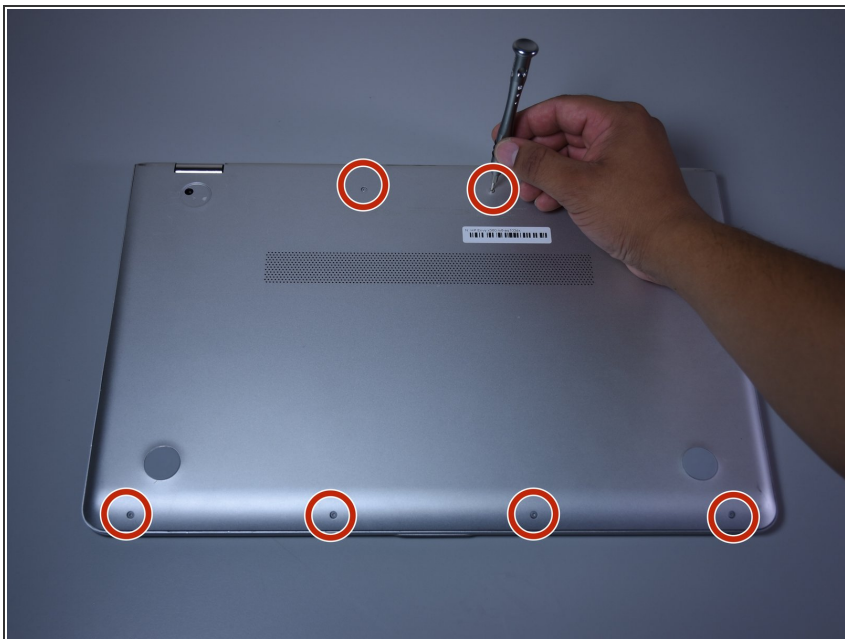
- Flip the laptop over to expose the underside.
  - Remove the two grip pads with blue plastic opening tool by inserting the tool between the laptop and the pads and slowly lifting up.
-  The grip pads are tacky, remove slowly to avoid separating the adhesive.

## Step 2



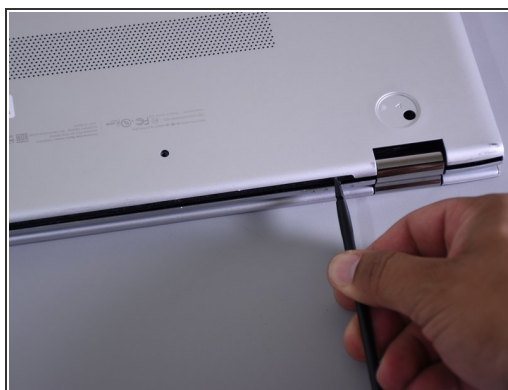
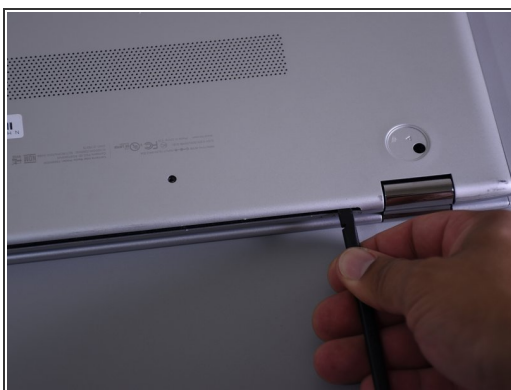
- Remove the two 8 mm Phillips Head screws that were under the grip pads using a Phillip's Head 1 Screwdriver.

## Step 3



- Remove the six 5 mm Torx screws using a T5 Torx Screwdriver.

## Step 4



- Use the nylon spudger to pop off the bottom cover by inserting it into the heat vent and twisting to the left or right.

 You may hear a slight clicking or popping, but that is normal.



## Step 5 — Battery



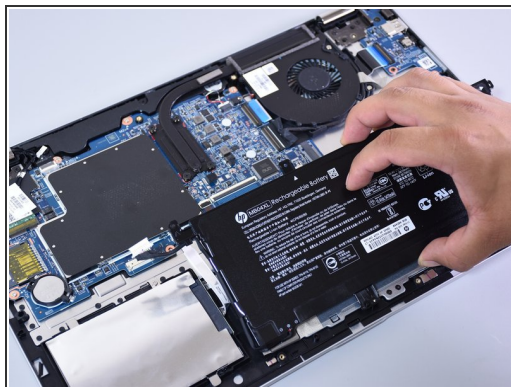
- Use the Phillips Head 1 Screwdriver to remove the six 4 mm screws.

## Step 6



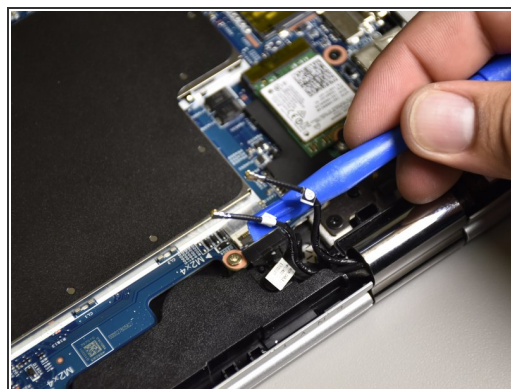
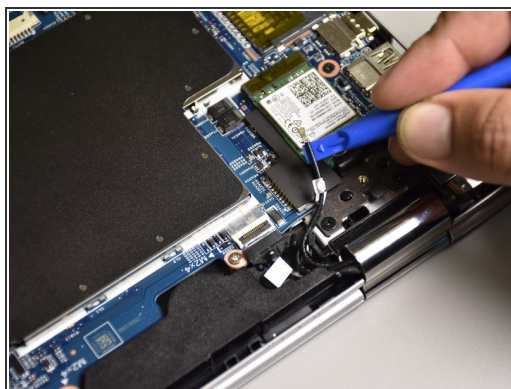
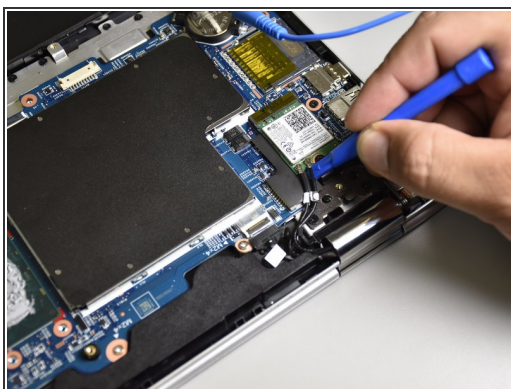
- Disconnect the battery port from the motherboard by gently lifting it on both sides with the plastic opening tool.
- Lift up the port with the tool.

## Step 7



- Lift the battery out of the laptop with your hands.

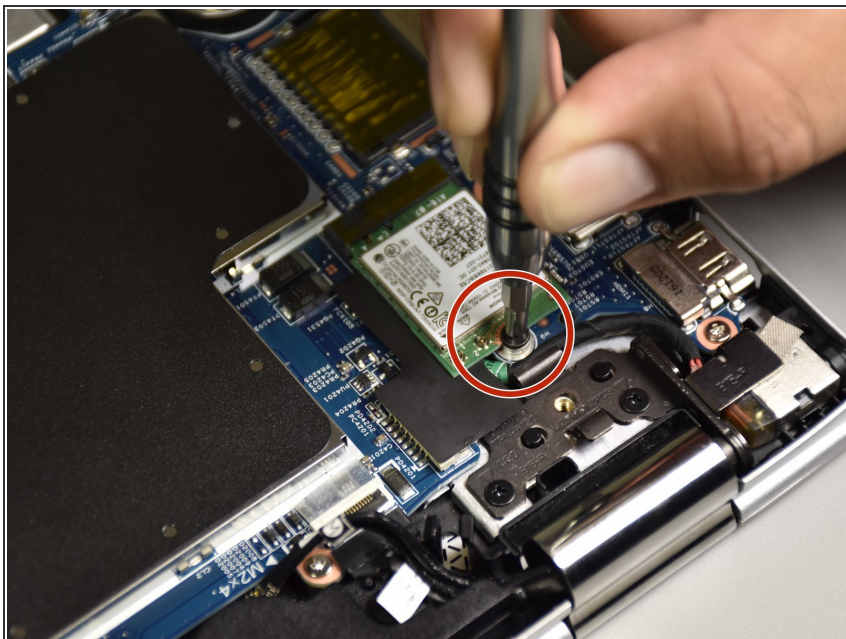
## Step 8 — Intel Wireless Module



- Remove the two antenna cables connected to the wireless module by wedging the small plastic opening tool between the cables and the wireless module and lifting up.

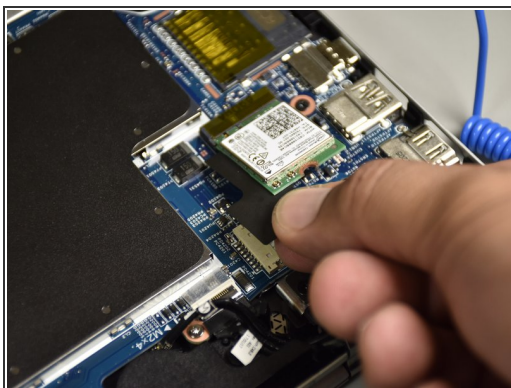


## Step 9



- Remove the 3.5 mm Phillips Head screw with the Phillip Head 1 screwdriver.

## Step 10



- Slide the wireless module towards the back of the computer to remove it.

To reassemble your device, follow these instructions in reverse order.