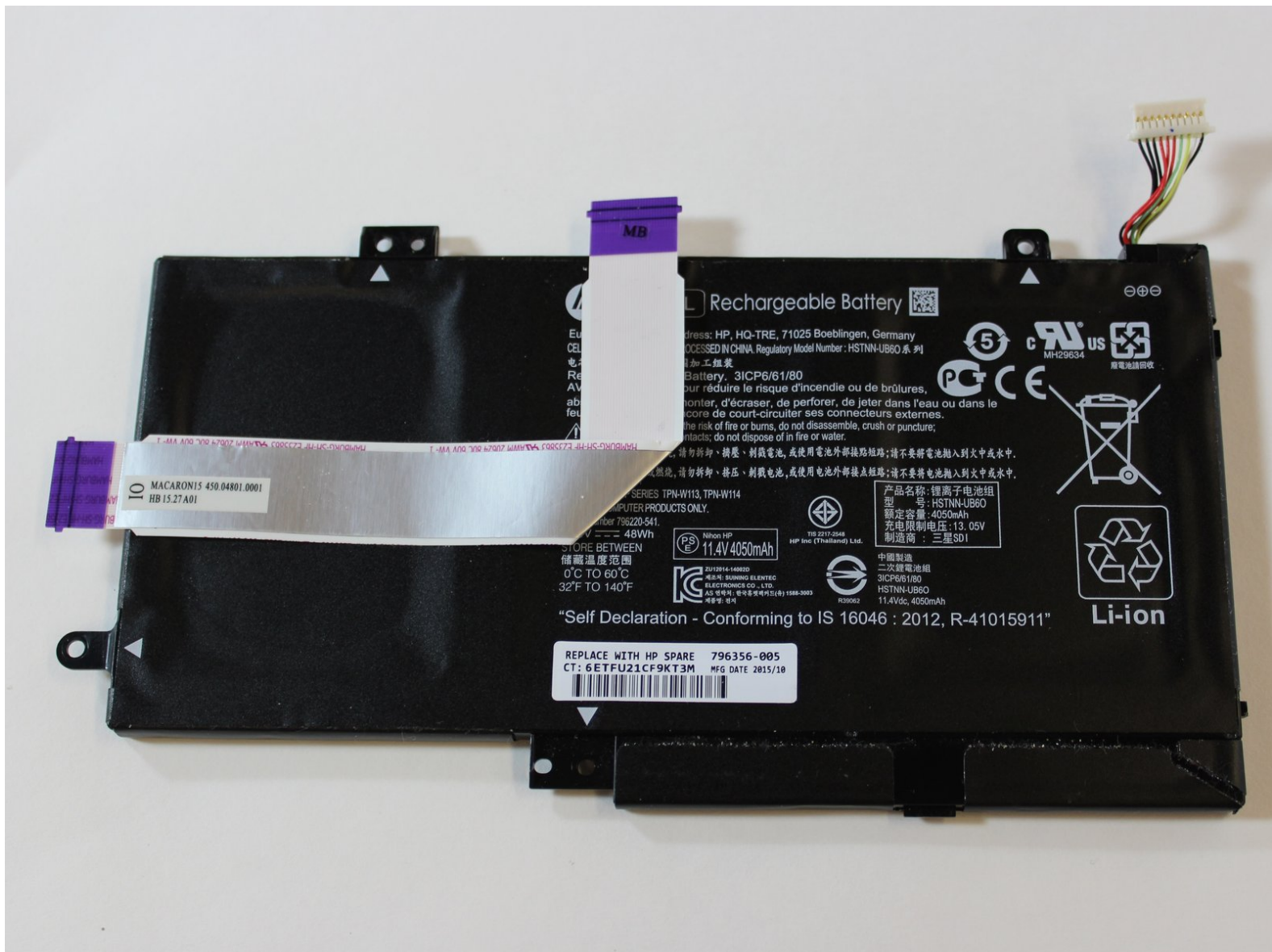




# HP Envy x360 m6-w103dx Battery Replacement

This guide will assist with replacing the battery for the HP Envy x360 m6-w103dx.

Written By: Steven Ngo



## INTRODUCTION

This guide shows how to replace the battery of the HP Envy x360 m6-w103dx. All you need to complete this guide is a plastic opening tool, a #0 Phillips screwdriver.

If you suspect there are issues with the battery, please refer to the troubleshooting guides [here](#).

Working with a full or hot battery could potentially be hazardous. Allow the battery of the laptop to completely run out of battery, and unplug all connections to the laptop before proceeding with the repair. Also, do not attempt to replace the battery immediately after use as it may be hot.



### TOOLS:

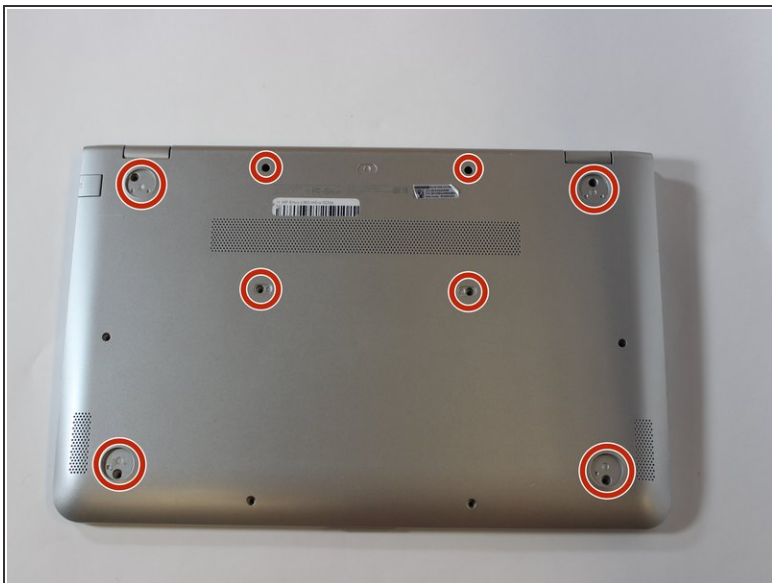
- [1 x Opening Picks](#) (1)
- [Phillips #0 Screwdriver](#) (1)
- [Anti-Static Wrist Strap](#) (1)
- [Spudger](#) (1)



### PARTS:

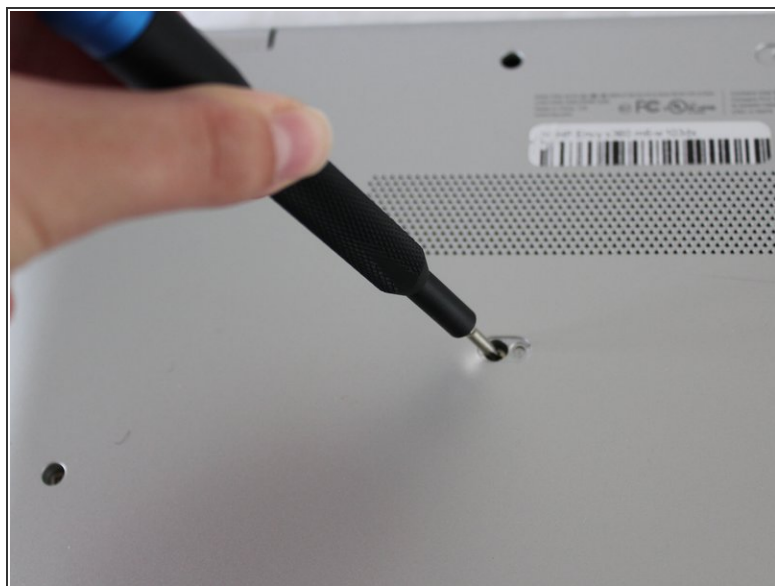
- [HP LEO3XL Replacement Battery](#) (1)

## Step 1 — Keyboard



- Using an opening pick, remove the 4 rubber feet and 4 screw covers.

## Step 2




- Unscrew the twelve 6 mm screws from the bottom of the laptop using a Phillips #0 screwdriver.



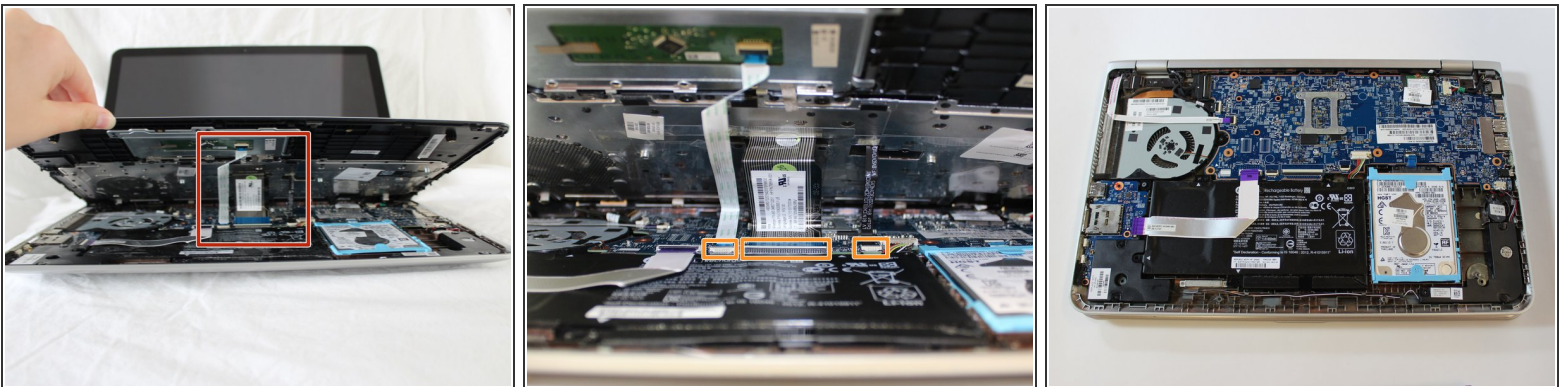
## Step 3



- Open the laptop carefully, with the keyboard face up.
- Pry around the outside of the keyboard with the plastic opening tool until the keyboard can be lifted slightly.

 When lifting the keyboard do not pull too hard. There are cables that must be disconnected before the keyboard can be removed.

## Step 4



- Lift the keyboard until you can see the cables connected to the motherboard.
- Gently lift the tab on each [ZIF connector](#) that connects each cable to the motherboard using a spudger. Once each tab is flipped up, the corresponding ribbon cable will come out easily.
- Detach the keyboard.

## Step 5 — Battery



- Remove the four 6 mm Phillips #0 screws holding the battery in place.

 The white arrows on the battery point to where each screw is.

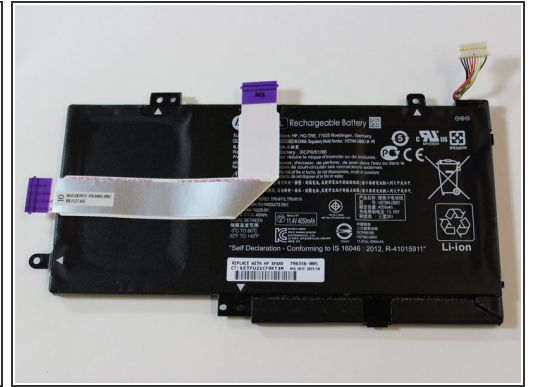
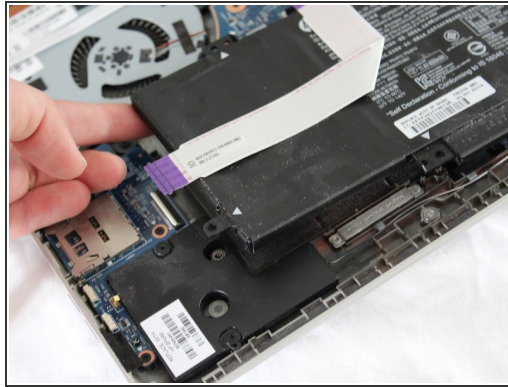
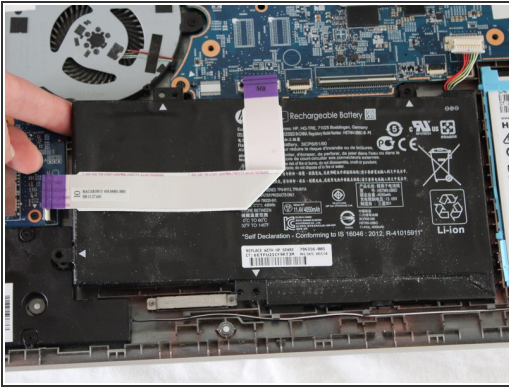
## Step 6



- Unplug the ribbon cable by flipping up the white tabs on the ZIF connectors and gently sliding the ribbon cables out of their sockets.
- Unplug the battery connector by grasping the small white tabs on either side of the connector and pulling down towards the battery.



## Step 7



- Lift out the battery.

- ☑ You may need to peel off the ribbon cable and replace it after installing the new battery if your replacement part doesn't have one already adhered.

To reassemble your device, follow these instructions in reverse order.