



HP Envy x360 m6-w103dx Hard Drive Replacement

This guide will assist with replacing the hard drive for the HP Envy x360 m6-w103dx.

Written By: Steven Ngo



INTRODUCTION

This replacement guide is for the hard drive (HDD) of the HP Envy x360 m6-w103dx. All you need to complete this guide is a plastic opening tool, a #0 Phillips screwdriver, and an anti-static wrist strap.

If you suspect there are issues with the hard drive, please refer to the troubleshooting guides [here](#).

Wear the anti-static wrist strap and attach it to a metal surface to avoid damaging electrical components.

Internal components of the laptop can be hot from use. Be sure to let the laptop cool down before beginning the replacement.

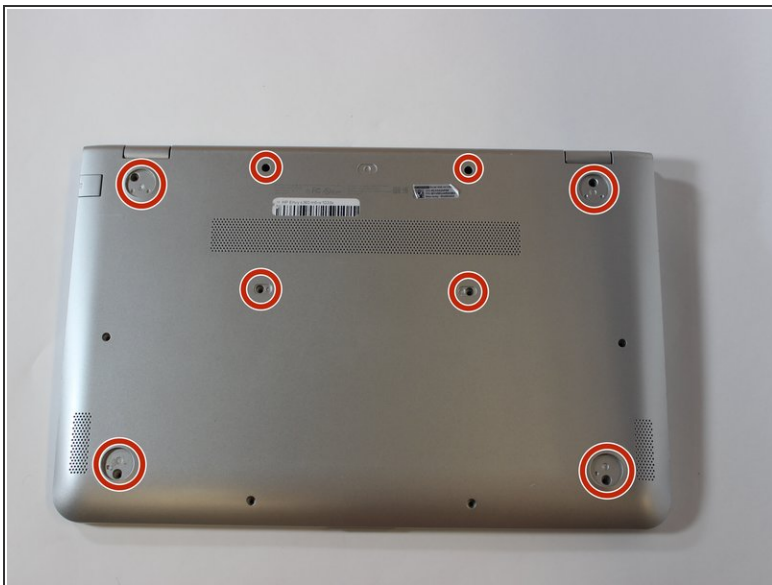
The hard drive can be easily corrupted if placed near magnets or shaken. Handle the hard drive with care.



TOOLS:

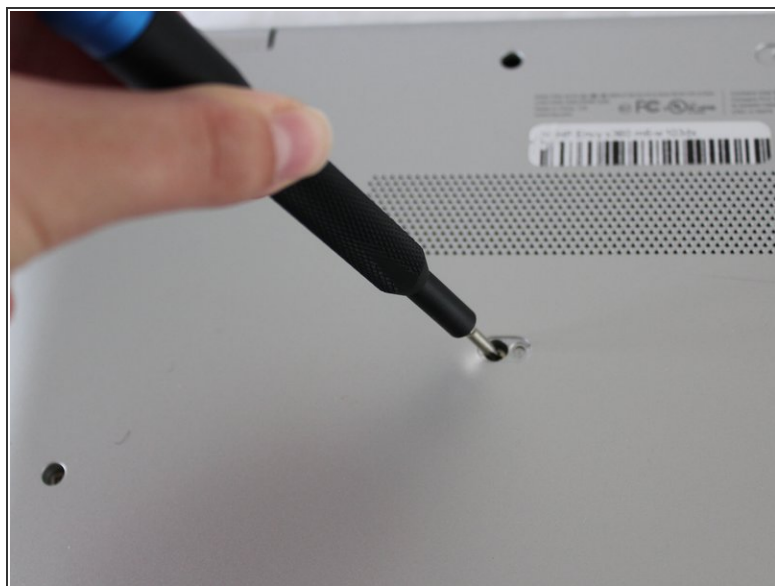
- [1 x Opening Picks](#) (1)
 - [Phillips #0 Screwdriver](#) (1)
 - [Anti-Static Wrist Strap](#) (1)
-

Step 1 — Keyboard



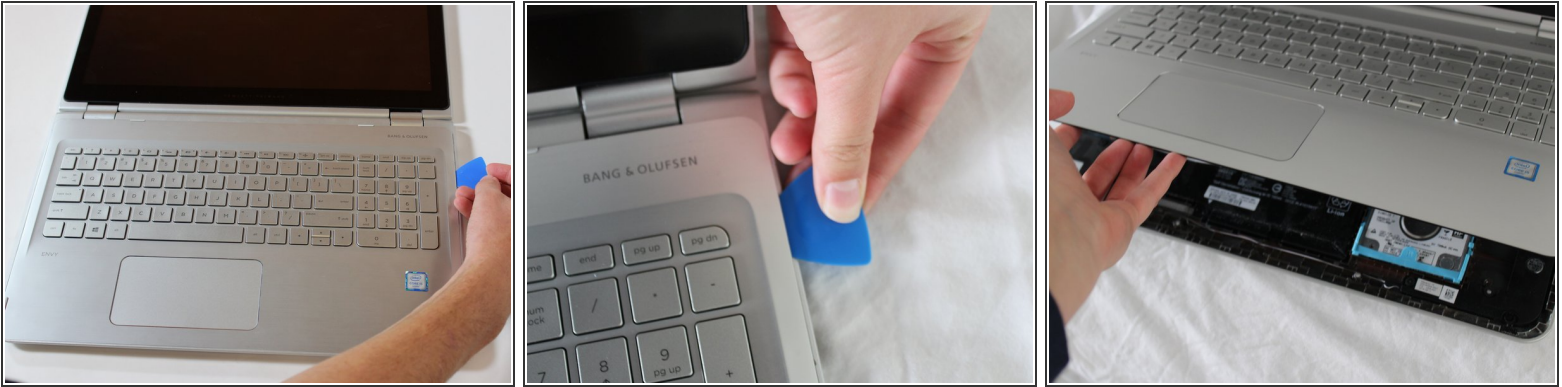
- Using an opening pick, remove the 4 rubber feet and 4 screw covers.

Step 2




- Unscrew the twelve 6 mm screws from the bottom of the laptop using a Phillips #0 screwdriver.

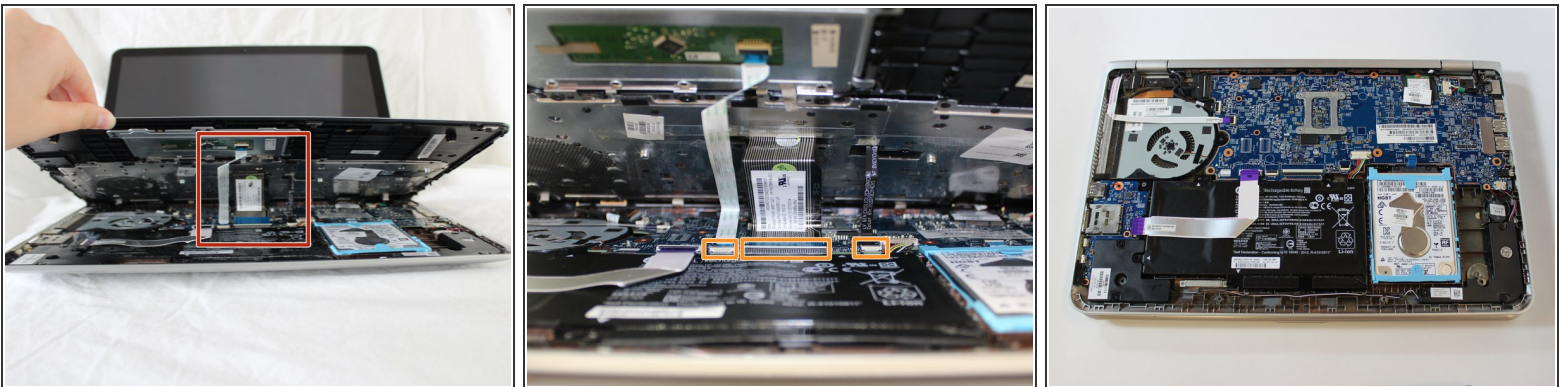
Step 3



- Open the laptop carefully, with the keyboard face up.
- Pry around the outside of the keyboard with the plastic opening tool until the keyboard can be lifted slightly.

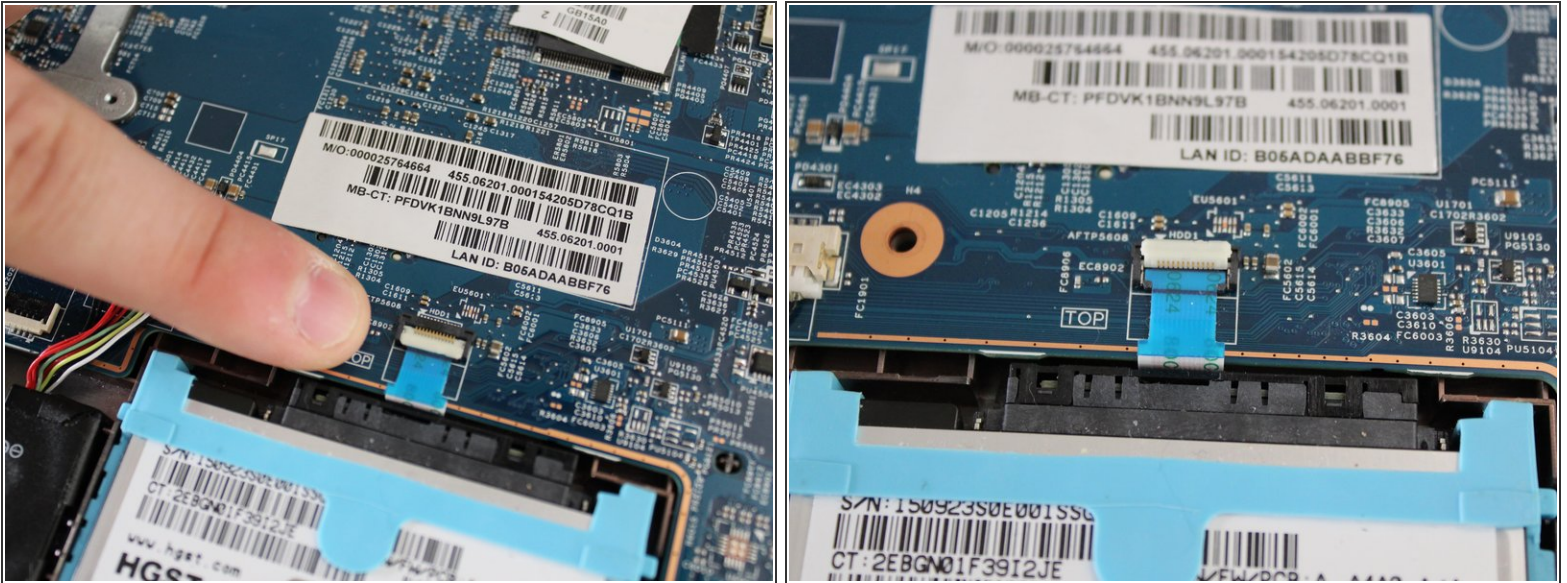
 When lifting the keyboard do not pull too hard. There are cables that must be disconnected before the keyboard can be removed.

Step 4



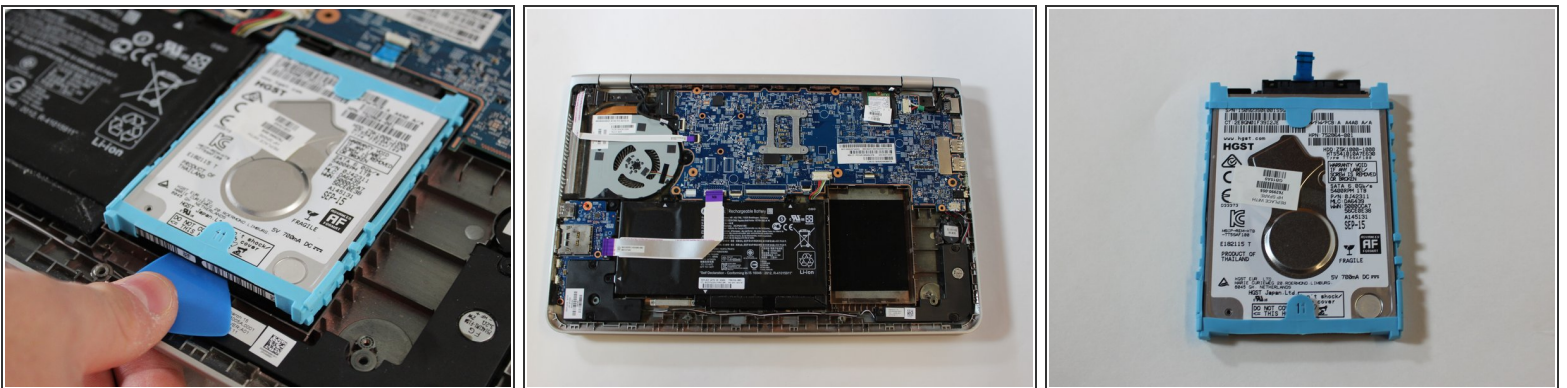
- Lift the keyboard until you can see the cables connected to the motherboard.
- Gently lift the tab on each [ZIF connector](#) that connects each cable to the motherboard using a spudger. Once each tab is flipped up, the corresponding ribbon cable will come out easily.
- Detach the keyboard.

Step 5 — Hard Drive



- Disconnect the connector by pushing up the white tab directly above the hard drive.
- Gently lift the connector to disconnect.

Step 6



- Using the plastic opening tool, gently lift the hard drive.
- Remove the hard drive by lifting it from the other components.

To reassemble your device, follow these instructions in reverse order.