



# HP Envy x360 m6-w103dx Keyboard Replacement

This guide will assist with replacing the keyboard for the HP Envy x360 m6-w103dx.

Written By: Steven Ngo



## INTRODUCTION

This replacement guide is for the keyboard of the HP Envy x360 m6-w103dx. All you need to complete this guide is a plastic opening tool, a #0 Phillips screwdriver, and an anti-static wrist strap.

Wear the anti-static wrist strap and attach it to a metal surface to avoid damaging sensitive electrical components. Make sure the computer is unplugged and powered off before touching any internal parts.

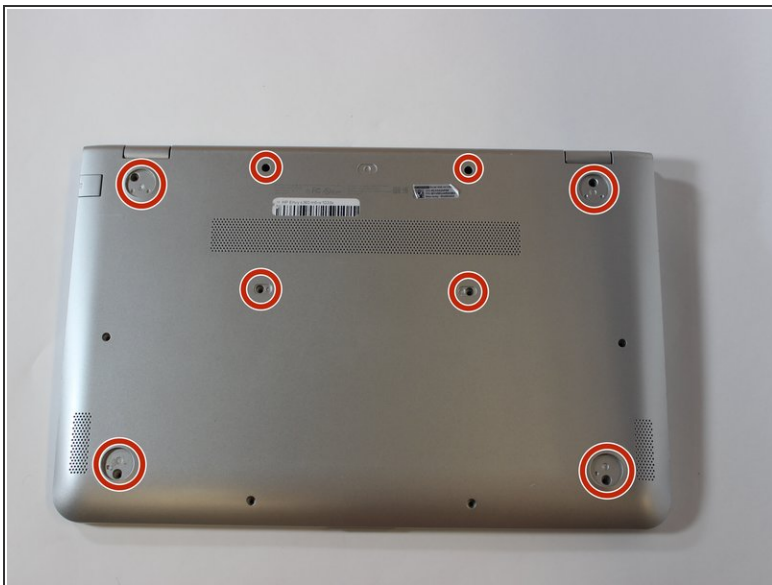
Removing the keyboard is not dangerous and doesn't require any special technical skills.



### TOOLS:

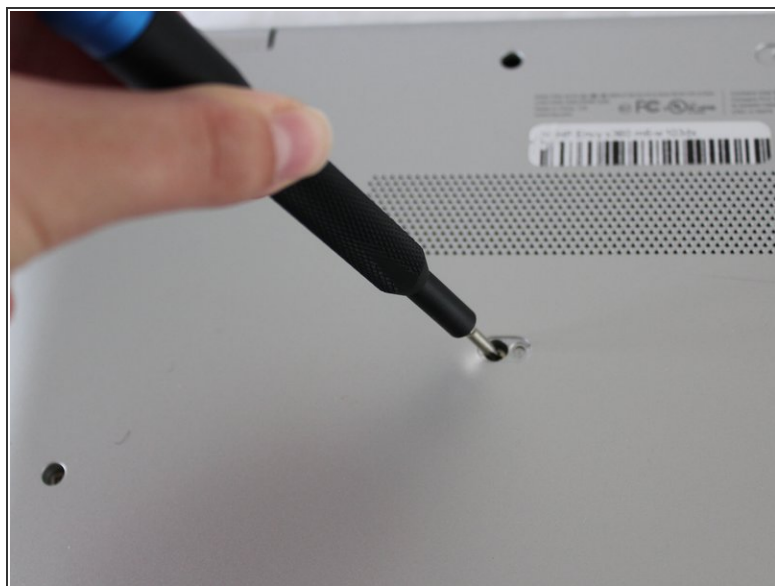
- [1 x Opening Picks](#) (1)
  - [Phillips #0 Screwdriver](#) (1)
  - [Anti-Static Wrist Strap](#) (1)
-

## Step 1 — Keyboard



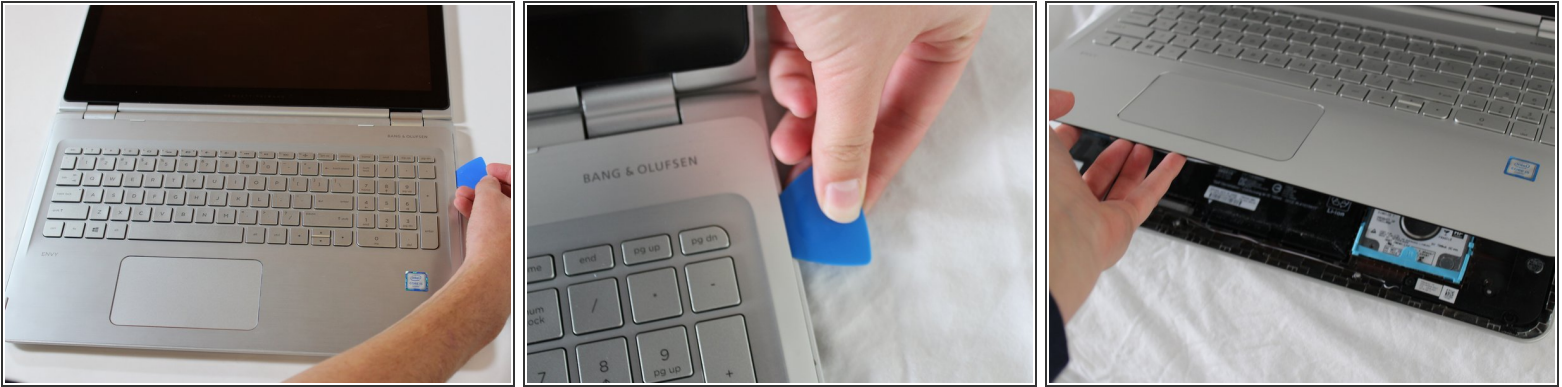
- Using an opening pick, remove the 4 rubber feet and 4 screw covers.

## Step 2



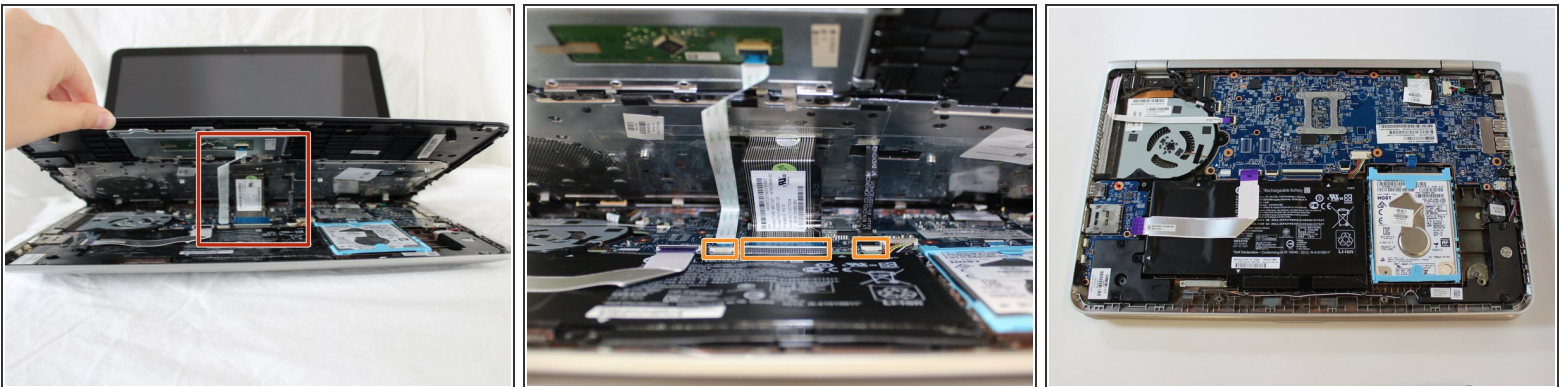
- Unscrew the twelve 6 mm screws from the bottom of the laptop using a Phillips #0 screwdriver.

### Step 3



- Open the laptop carefully, with the keyboard face up.
  - Pry around the outside of the keyboard with the plastic opening tool until the keyboard can be lifted slightly.
- ⚠ When lifting the keyboard do not pull too hard. There are cables that must be disconnected before the keyboard can be removed.

### Step 4



- Lift the keyboard until you can see the cables connected to the motherboard.
- Gently lift the tab on each [ZIF connector](#) that connects each cable to the motherboard using a spudger. Once each tab is flipped up, the corresponding ribbon cable will come out easily.
- Detach the keyboard.

To reassemble your device, follow these instructions in reverse order.