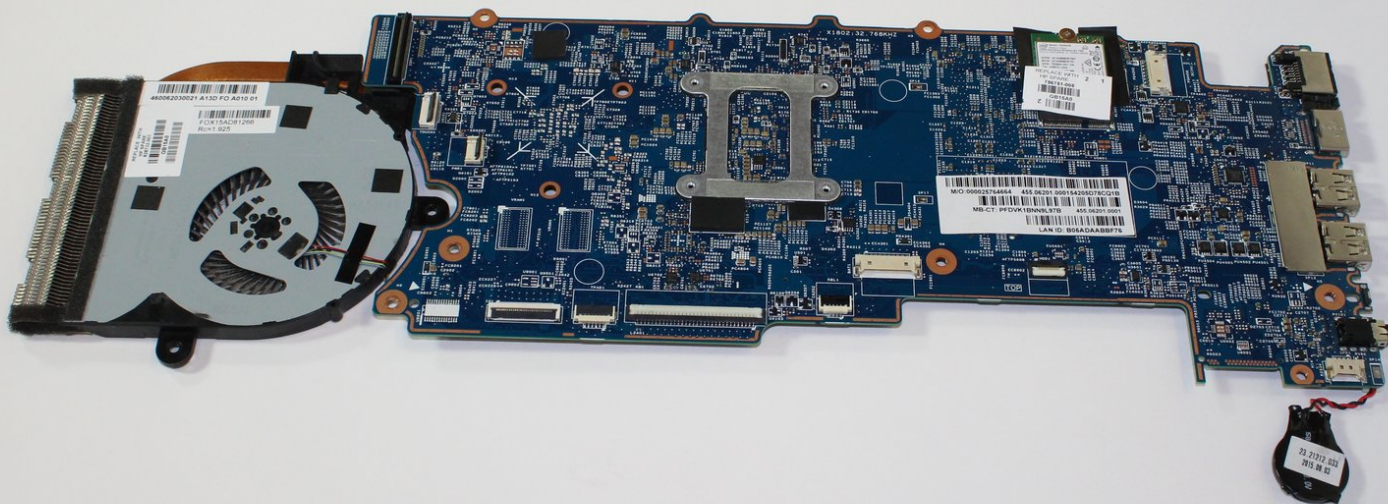




HP Envy x360 m6-w103dx Motherboard Replacement

This guide will assist with replacing the motherboard for the HP Envy x360 m6-w103dx.

Written By: Steven Ngo



INTRODUCTION

This replacement guide is for the motherboard of the HP Envy x360 m6-w103dx. All you need to complete this guide is a plastic opening tool, a #0 Phillips screwdriver, and an anti-static wrist strap.

Wear the anti-static wrist strap and attach it to a metal surface to avoid damaging sensitive electrical components. Make sure the computer is unplugged and powered off before touching any internal parts.

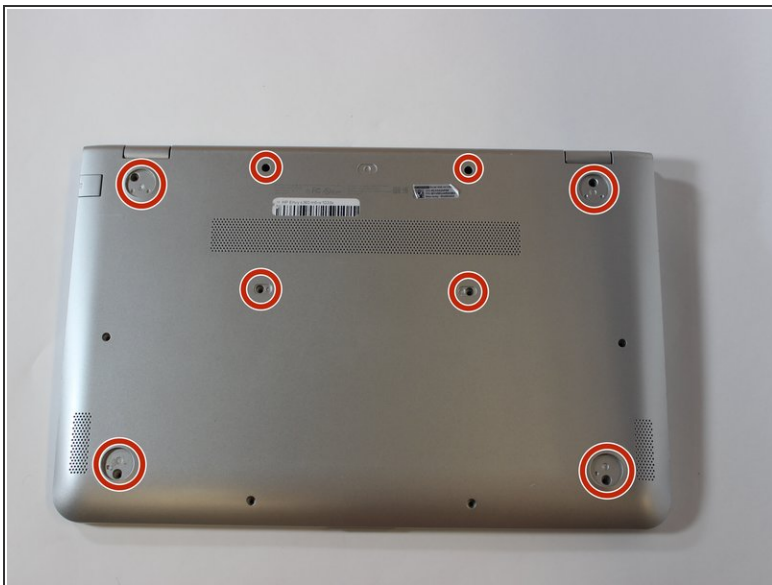
The motherboard isn't a hazardous component to handle, but it is connected to many critical parts of the computer and must be removed with care.



TOOLS:

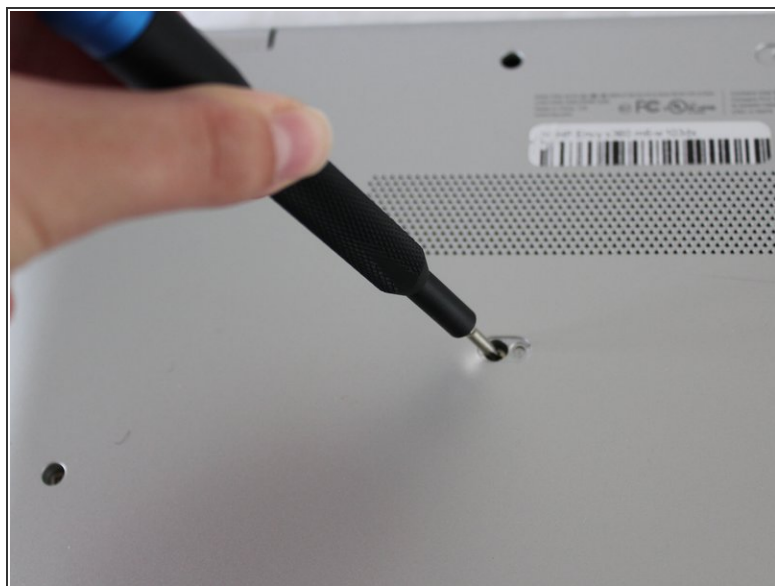
- [1 x Opening Picks](#) (1)
 - [Phillips #0 Screwdriver](#) (1)
 - [Anti-Static Wrist Strap](#) (1)
-

Step 1 — Keyboard



- Using an opening pick, remove the 4 rubber feet and 4 screw covers.

Step 2



- Unscrew the twelve 6 mm screws from the bottom of the laptop using a Phillips #0 screwdriver.

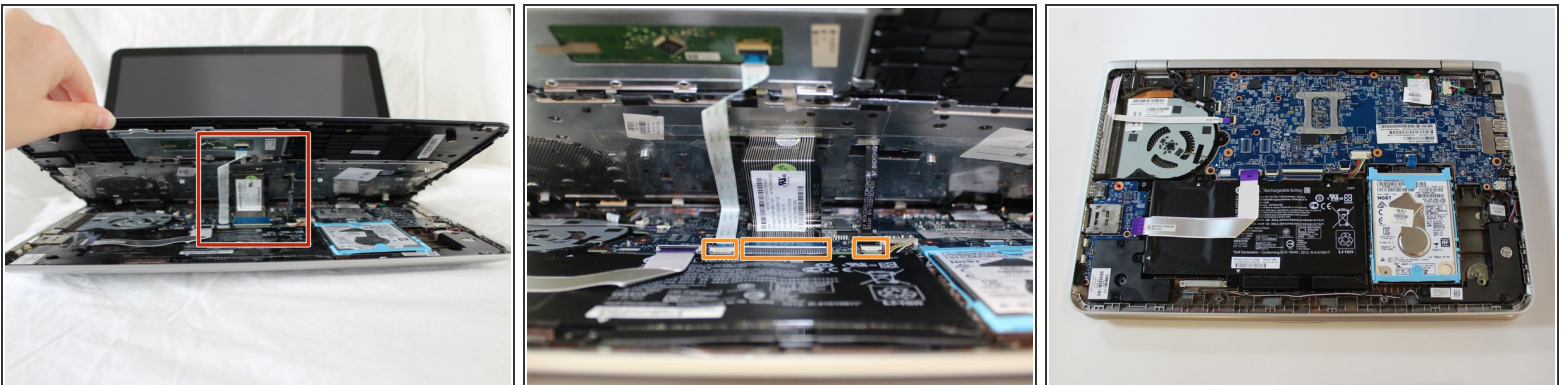
Step 3



- Open the laptop carefully, with the keyboard face up.
- Pry around the outside of the keyboard with the plastic opening tool until the keyboard can be lifted slightly.

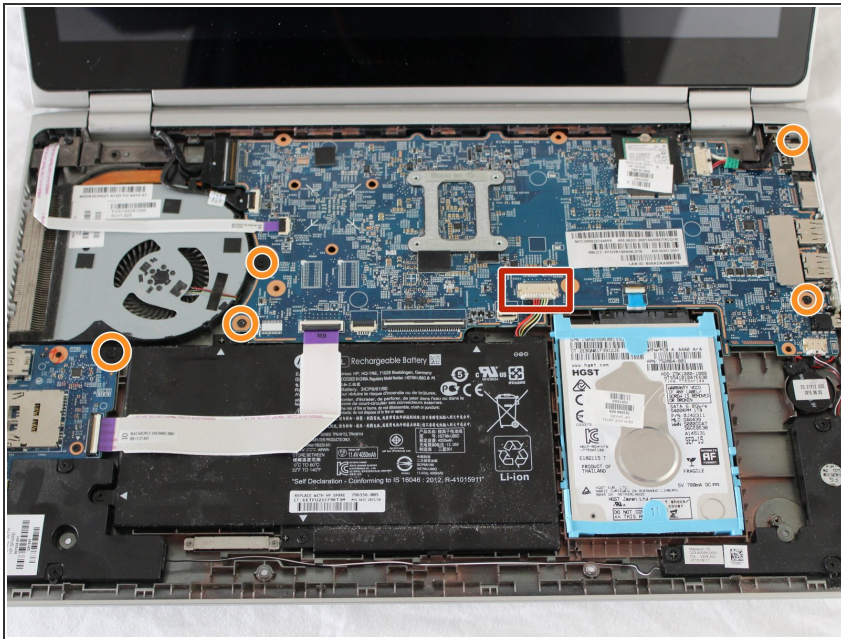
⚠ When lifting the keyboard do not pull too hard. There are cables that must be disconnected before the keyboard can be removed.

Step 4



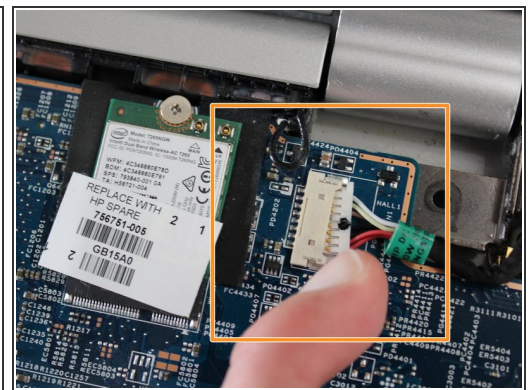
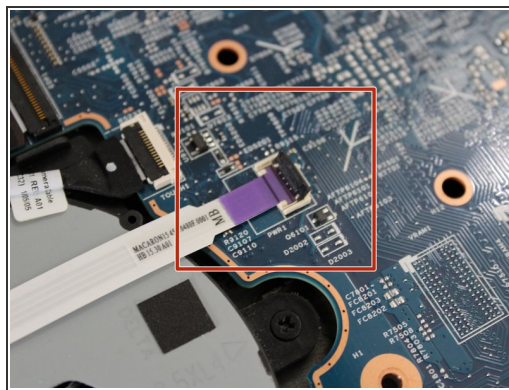
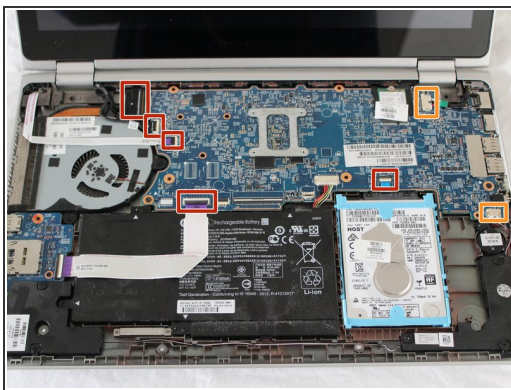
- Lift the keyboard until you can see the cables connected to the motherboard.
- Gently lift the tab on each [ZIF connector](#) that connects each cable to the motherboard using a spudger. Once each tab is flipped up, the corresponding ribbon cable will come out easily.
- Detach the keyboard.

Step 5 — Motherboard



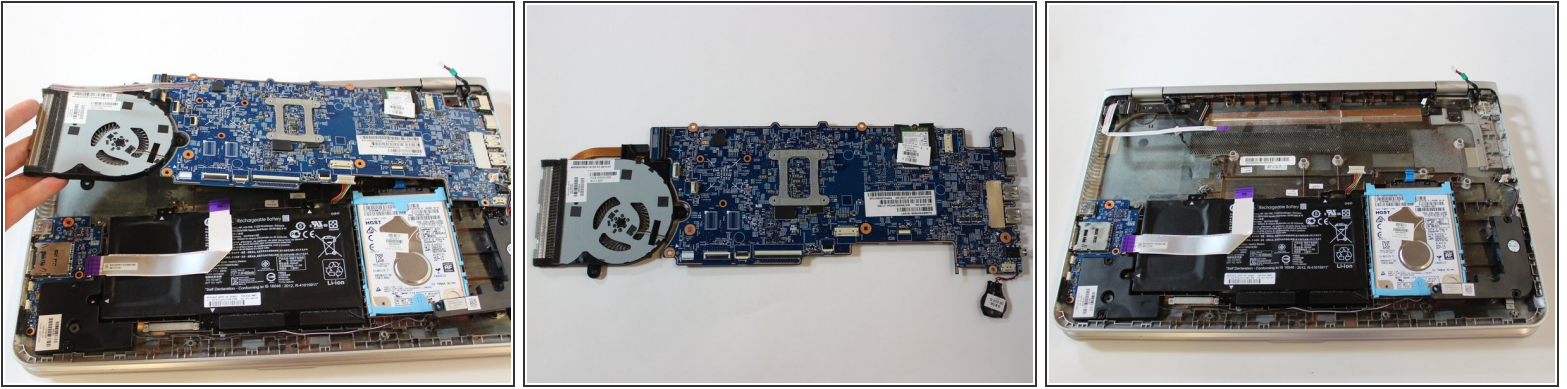
- Disconnect the pin head battery connection to remove power from the motherboard.
- Unscrew the five 4mm screws holding the motherboard in place using a #0 Phillips screwdriver.
- ⓘ It's possible the positions of the screws will be different on your board. If the motherboard resists lifting, double-check that all screws have been removed.

Step 6



- Remove the five flat ribbon cables by gently lifting the head of the cable up and back.
- Remove the two remaining multicolored ribbon cables by pulling the white plastic head backwards.
- ⚠ Do not pull directly on the wires.
- ⓘ If the head of the multicolored ribbon cable doesn't come out, try gently wiggling it side to side as you pull.

Step 7



- Lift the motherboard up from the left side at a shallow angle.
 - Gently pull the motherboard to the left and gently wiggle it side to side until the ports on the right side of the board detach from the case.
- ⚠ Ensure the laptop is well supported, as the motherboard is a heavy component and removing it may make the laptop off-balance.

To reassemble your device, follow these instructions in reverse order.