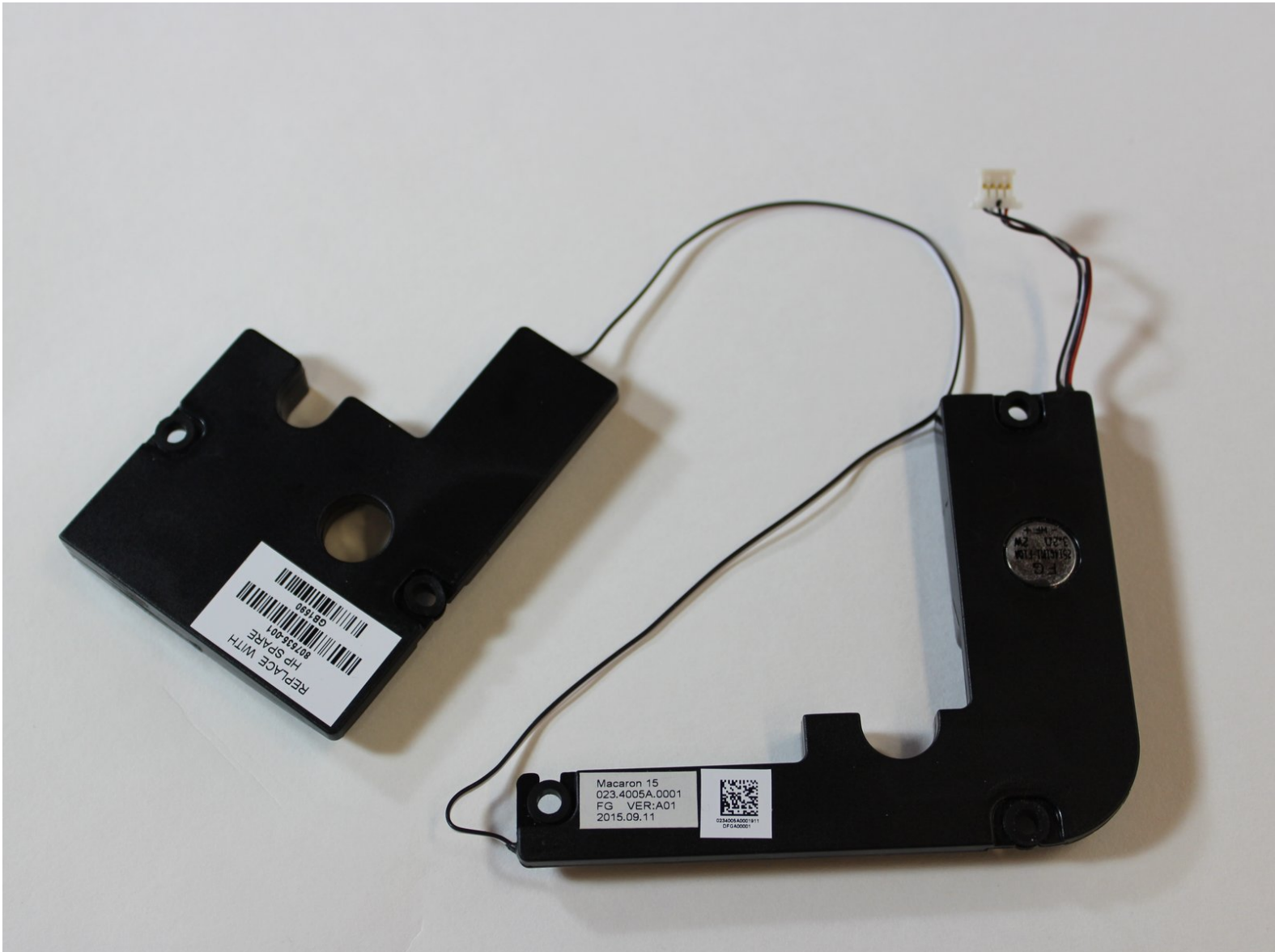




# HP Envy x360 m6-w103dx Speakers Replacement

This guide will assist with replacing the speakers for the HP Envy x360 m6-w103dx.

Written By: Steven Ngo



## INTRODUCTION

This replacement guide is for the speakers of the HP Envy x360 m6-w103dx. All you need to complete this guide is a plastic opening tool, a #0 Phillips screwdriver, a #00 Phillips screwdriver, and an anti-static wrist strap.

If you suspect there are issues with the speakers, please refer to the troubleshooting guides [here](#).

Wear the anti-static wrist strap and attach it to a metal surface to avoid damaging sensitive electrical components. Make sure the computer is unplugged and powered off before touching any internal parts.

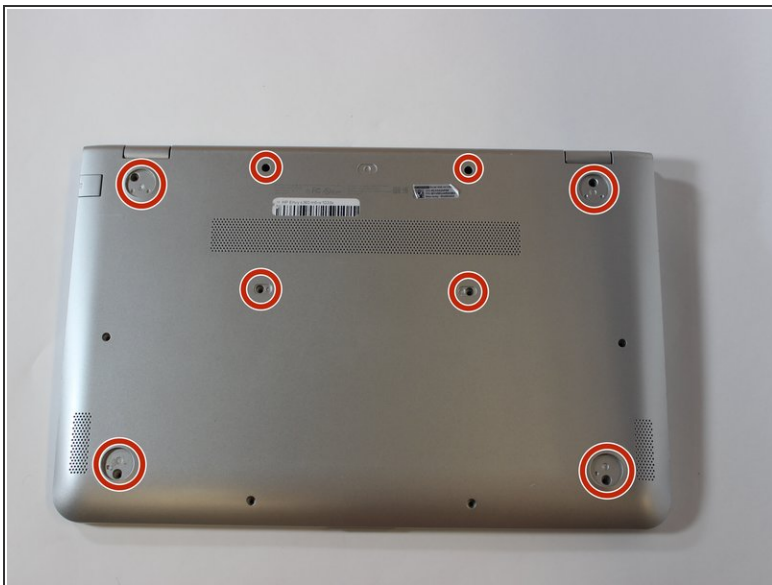
The speakers aren't hazardous components to handle.



### TOOLS:

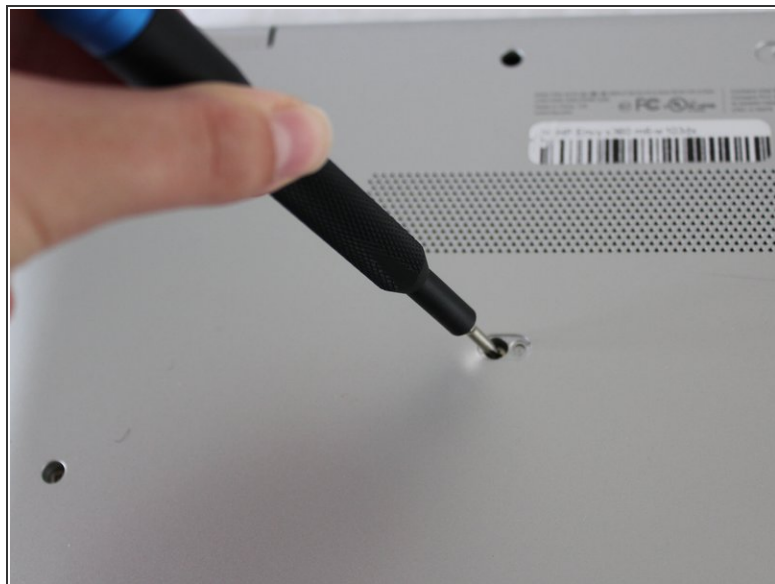
- [1 x Opening Picks](#) (1)
  - [Phillips #0 Screwdriver](#) (1)
  - [Phillips #00 Screwdriver](#) (1)
-

## Step 1 — Keyboard



- Using an opening pick, remove the 4 rubber feet and 4 screw covers.

## Step 2



- Unscrew the twelve 6 mm screws from the bottom of the laptop using a Phillips #0 screwdriver.

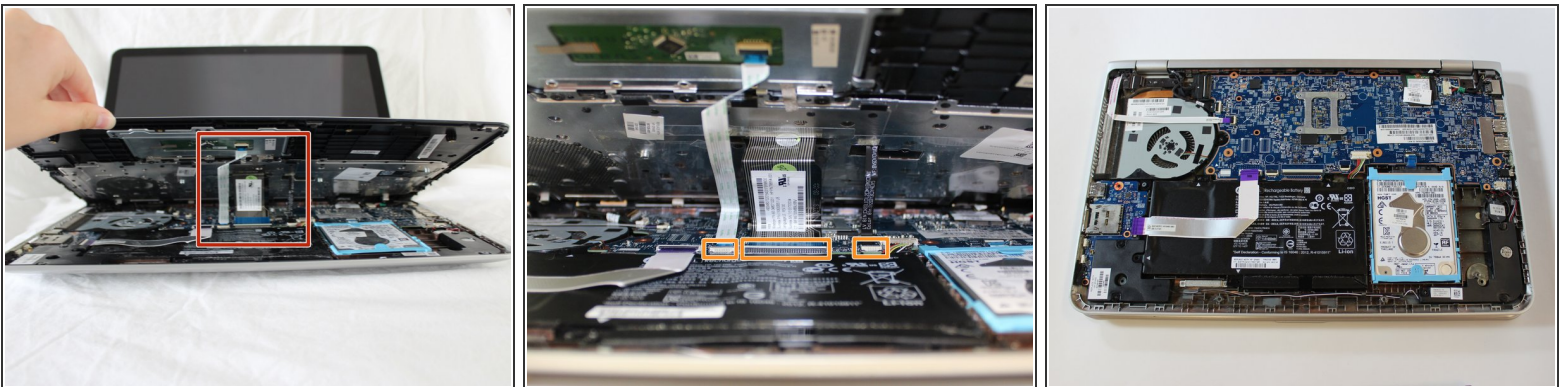
## Step 3



- Open the laptop carefully, with the keyboard face up.
- Pry around the outside of the keyboard with the plastic opening tool until the keyboard can be lifted slightly.

⚠ When lifting the keyboard do not pull too hard. There are cables that must be disconnected before the keyboard can be removed.

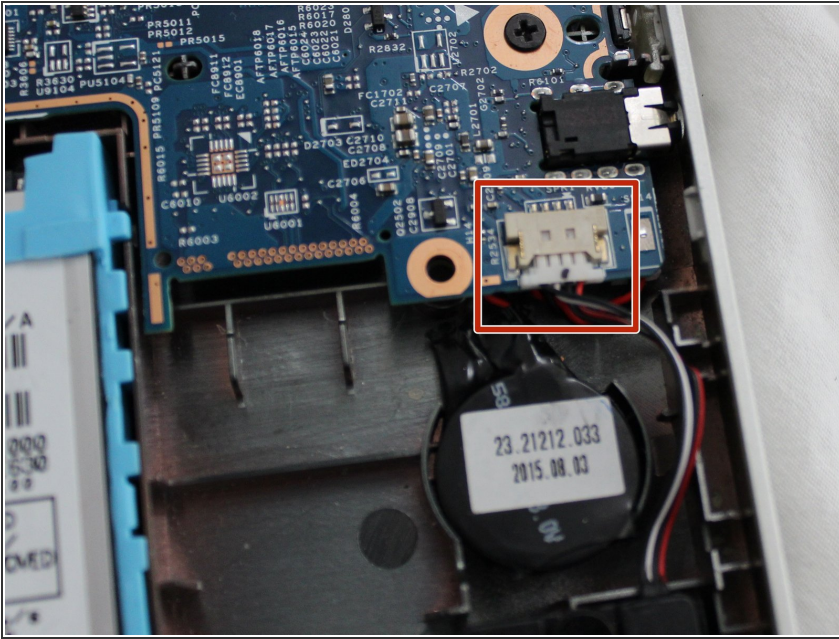
## Step 4



- Lift the keyboard until you can see the cables connected to the motherboard.
- Gently lift the tab on each [ZIF connector](#) that connects each cable to the motherboard using a spudger. Once each tab is flipped up, the corresponding ribbon cable will come out easily.
- Detach the keyboard.



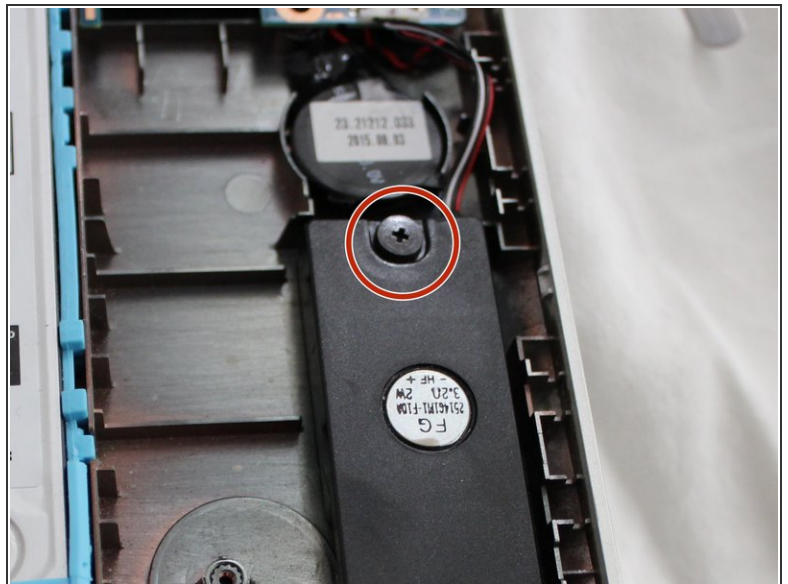
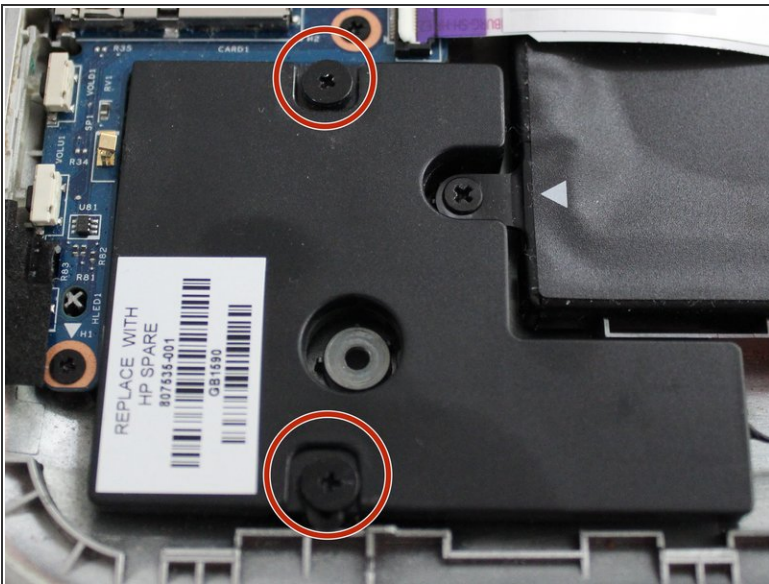
## Step 5 — Speakers



- Disconnect the connector on the left speaker by gently pulling on each side of the connector.

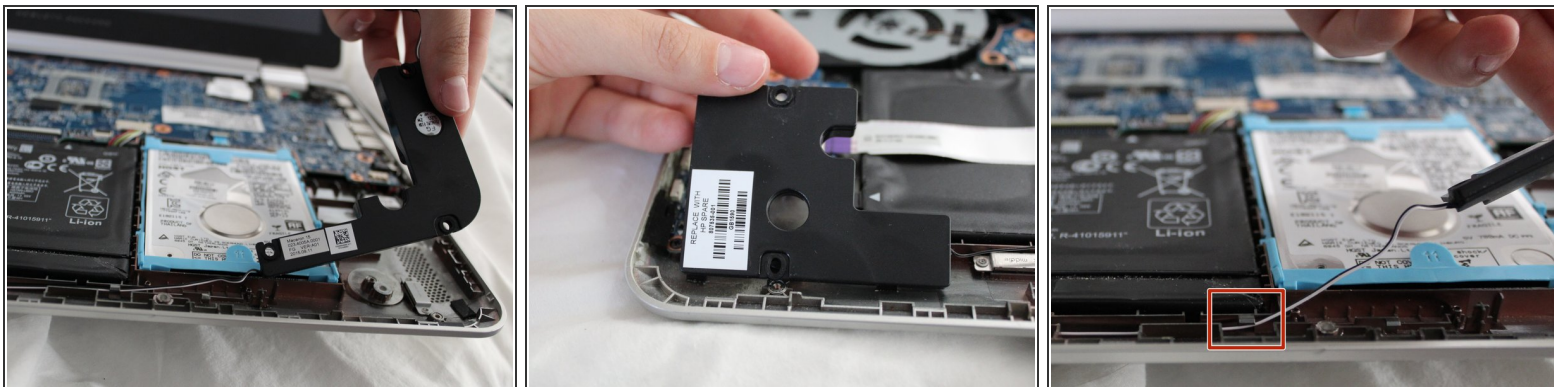
⚠ Do not pull directly on the wires.

## Step 6



- Unscrew the three 6mm screws using a #00 Phillips screwdriver, one on the right speaker and two on the left speaker.

## Step 7



- Remove each speaker one at a time.
- Carefully remove the wire connecting the two speakers, which is tucked under small plastic hooks on the bottom edge of the device.

To reassemble your device, follow these instructions in reverse order.