



HP Folio 13t-1000 Battery Replacement

Use this guide to remove and replace the battery in your HP Folio 13t-1000.

Written By: Cody Badchkam



INTRODUCTION

Make sure you have completed the keyboard replacement guide and the top cover removal guide.

A dead battery can prevent your laptop from turning on. This guide will show you how to correctly replace the battery and restore power for your HP Folio 13t-1000.




TOOLS:

- [Phillips #1 Screwdriver](#) (1)
 - [Spudger](#) (1)
 - [Anti-Static Wrist Strap](#) (1)
-

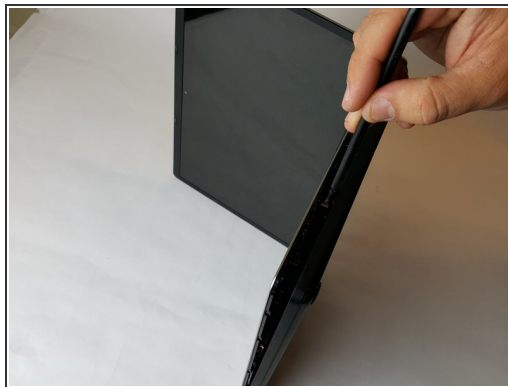
Step 1 — Keyboard




 Use an antistatic wrist wrap, or periodically touch unpainted metal to minimize the risk of damaging the laptop by electrostatic shock.

- Use a PH1 screw head to remove the 16, 6mm screws from the bottom case housing of the laptop.

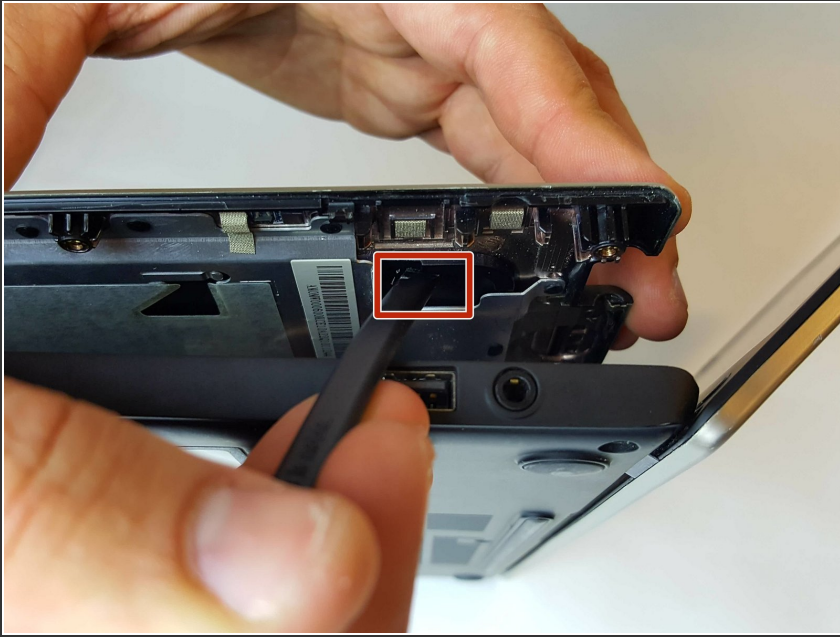
Step 2



 This step requires unlocking the very fragile plastic clips along the frame; take care not to damage them.

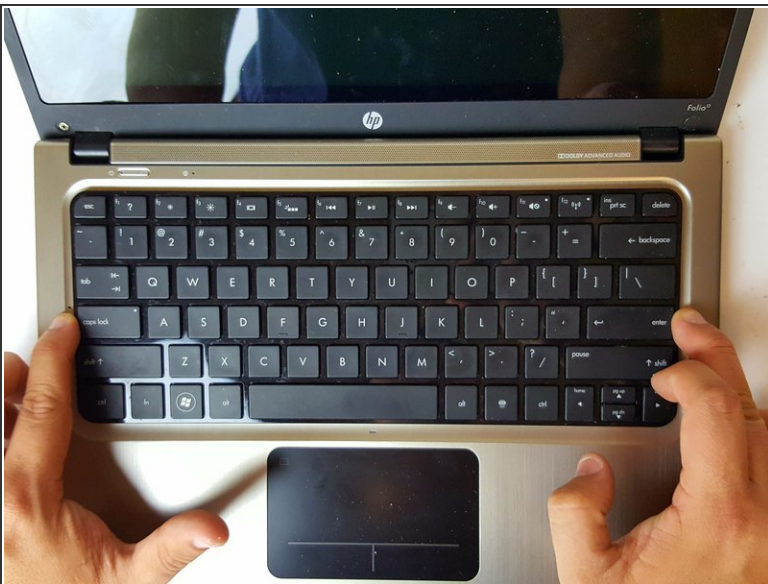
- Slide the spudger with a twisting motion along the entire perimeter of the laptop until the top cover is separated from the frame of the device.

Step 3



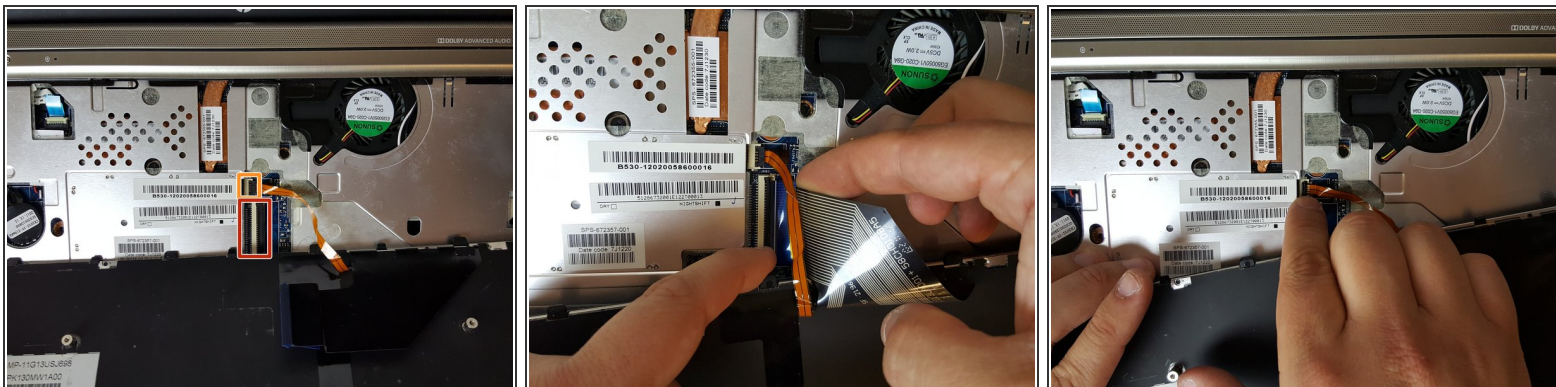
- Using the flat portion of the plastic spudger, push the corner of the black surface until the first clip unlocks.
- The top right corner of the keyboard should now be sticking out slightly.
- Repeat the same process for the top left corner.

Step 4



- Slide the keyboard up and towards the screen just enough to separate the keyboard from the top cover.

Step 5



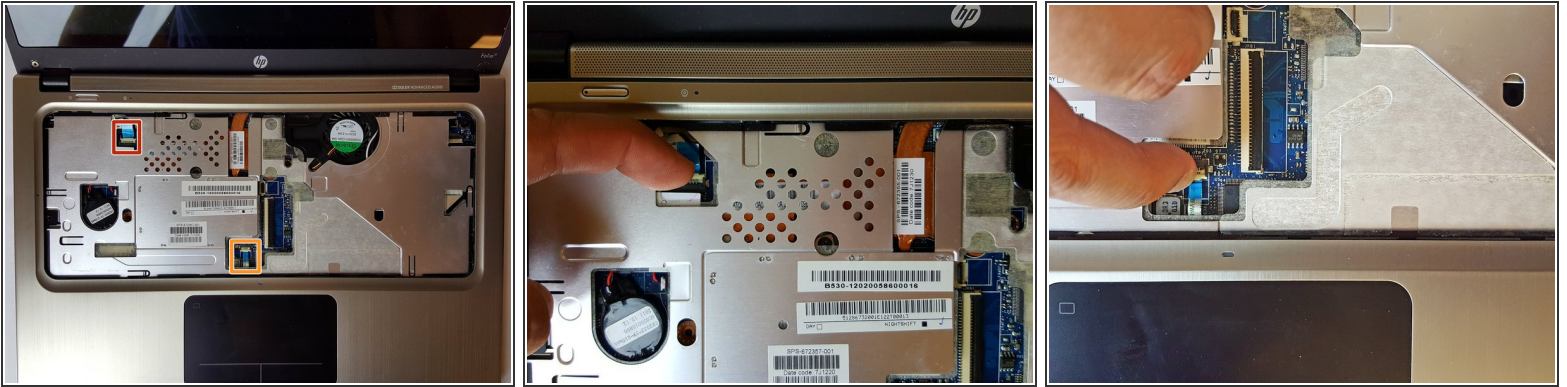
- To unlock the clamps connected to the motherboard, use your fingers or insert the pointed edge of the spudger between the first clamp and the cable.
- Repeat the same process for the second clamp.

Step 6



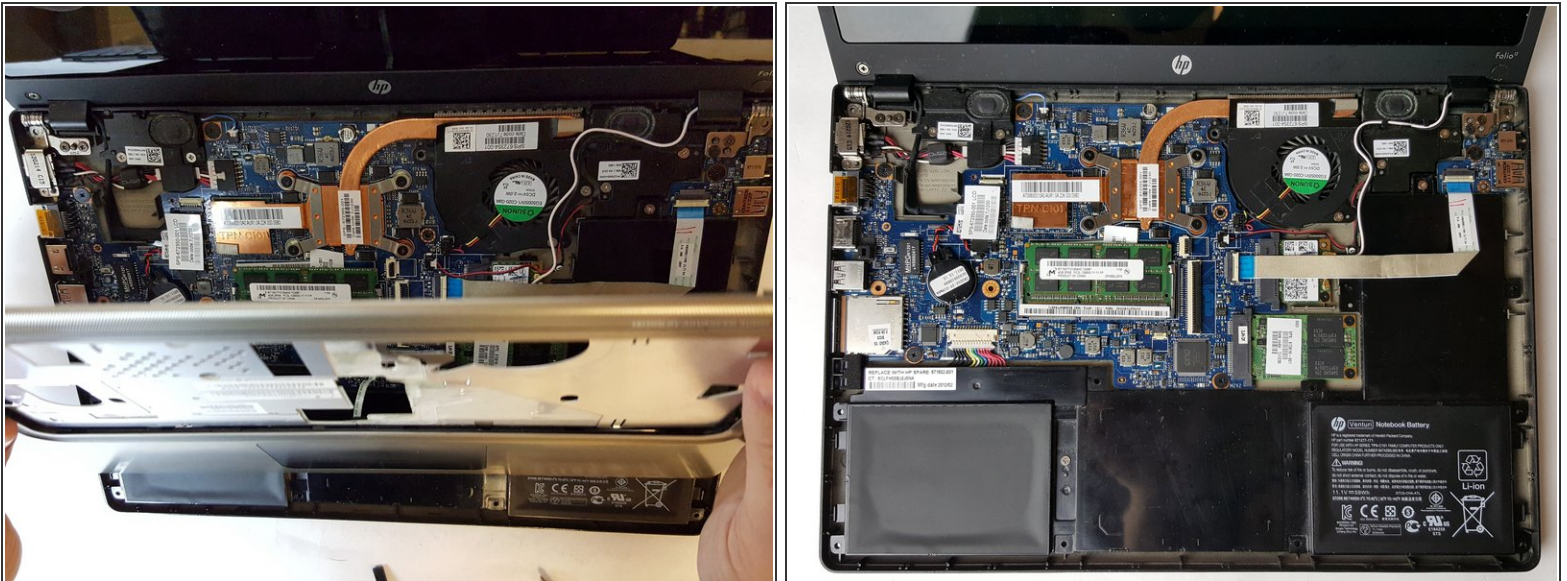
- Remove the keyboard from the laptop.

Step 7 — Top Hardware Cover



- Place your finger between one of the plastic clamps and the cable and apply a slight leveraging force until the clamp pops up.
- Do the same for the second connection.

Step 8



- Remove the top hardware cover.

Step 9 — Battery



- Use a PH1 screw head to remove the two, 3mm screws.

Step 10



- Remove the motherboard connection using the nylon spudger or your fingers.

Step 11



- Separate the ribbon from the battery by wedging the flat metal spudger between the two.

Step 12



- Remove old battery and replace with a new one.

To reassemble your device, follow these instructions in reverse order.