



HP G60-443CL Wifi Card Replacement

Replacing the Wifi Card will solve the problems with the laptops connectivity issues.

Written By: Samantha



INTRODUCTION

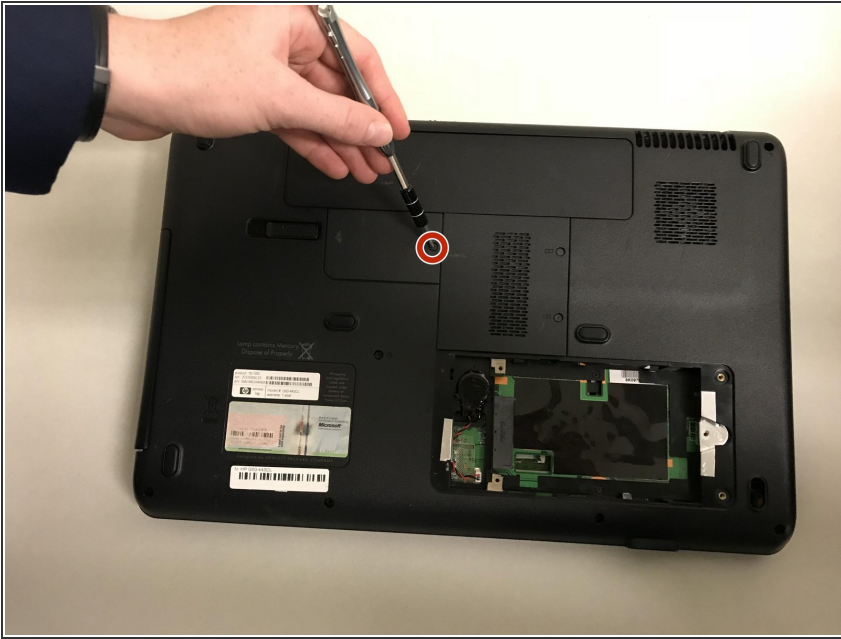
If it becomes difficult to connect to WiFi, the WiFi card may need to be replaced. Replacing the WiFi card requires a Phillips Head #0 screwdriver in order to unscrew one screw. It is important that after removing the backing, the WiFi card and wires are handled very delicately.



TOOLS:

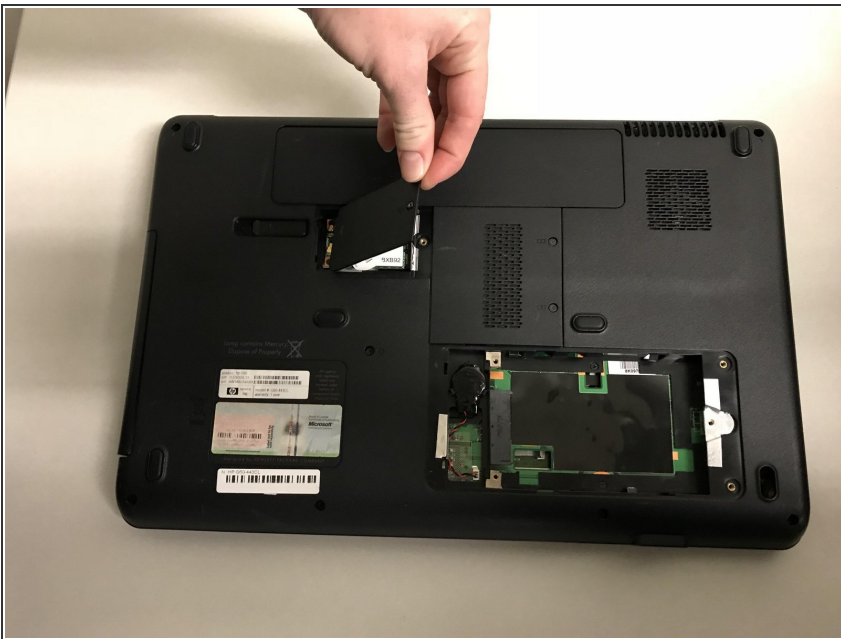
- [Phillips #0 Screwdriver](#) (1)
-

Step 1 — Wifi Card



- Unscrew the 5mm Phillips #0 screw.

Step 2



- Remove the cover.

Step 3



- Unhook the two wires attached to the WiFi card.

Step 4



- Gently remove the WiFi card.

To reassemble your device, follow these instructions in reverse order.