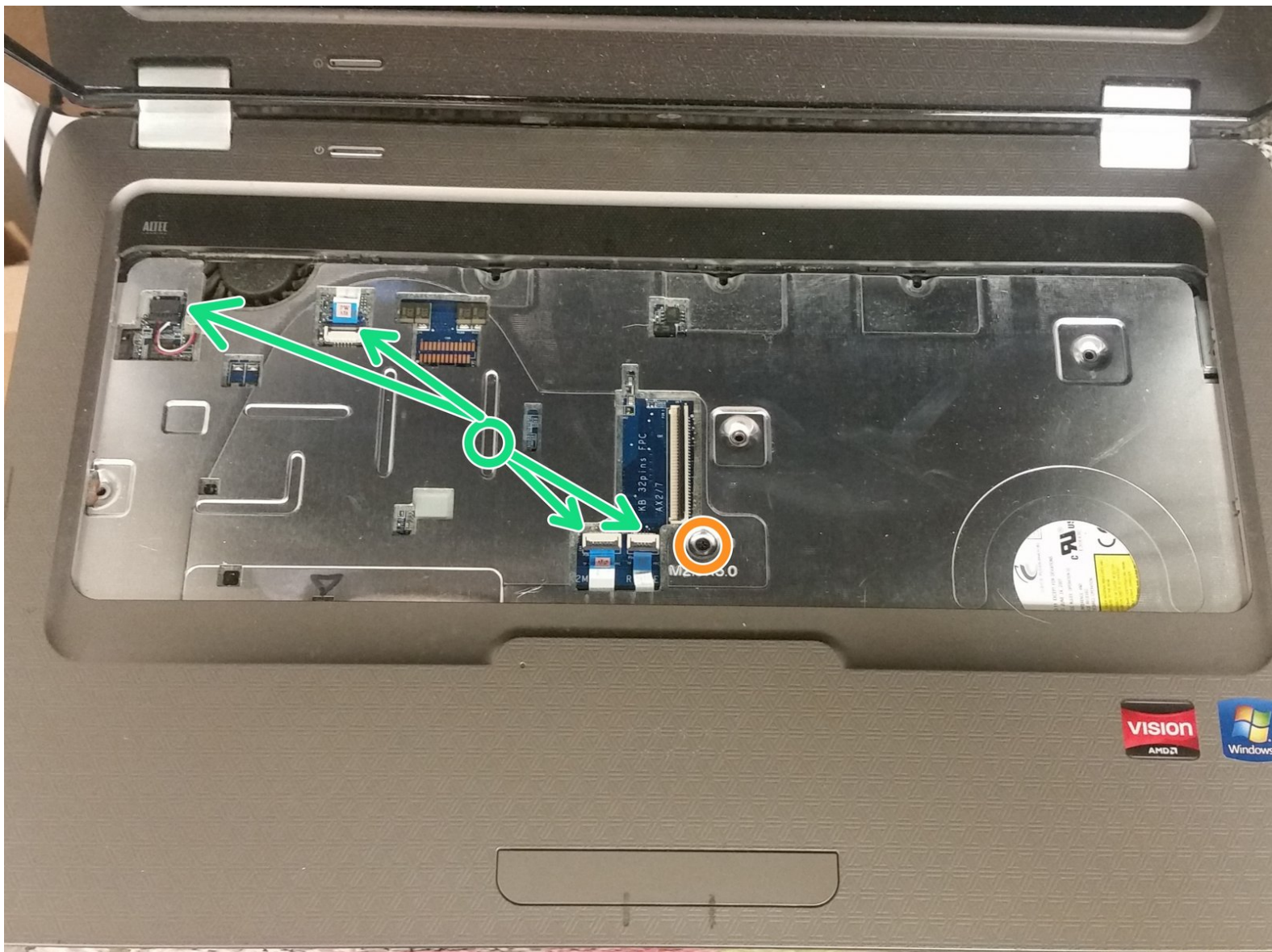




# HP G62 347NR Motherboard Replacement

This guide teaches you how to replace the motherboard in an HP G62 series laptop.

Written By: Joseph Sctbunio

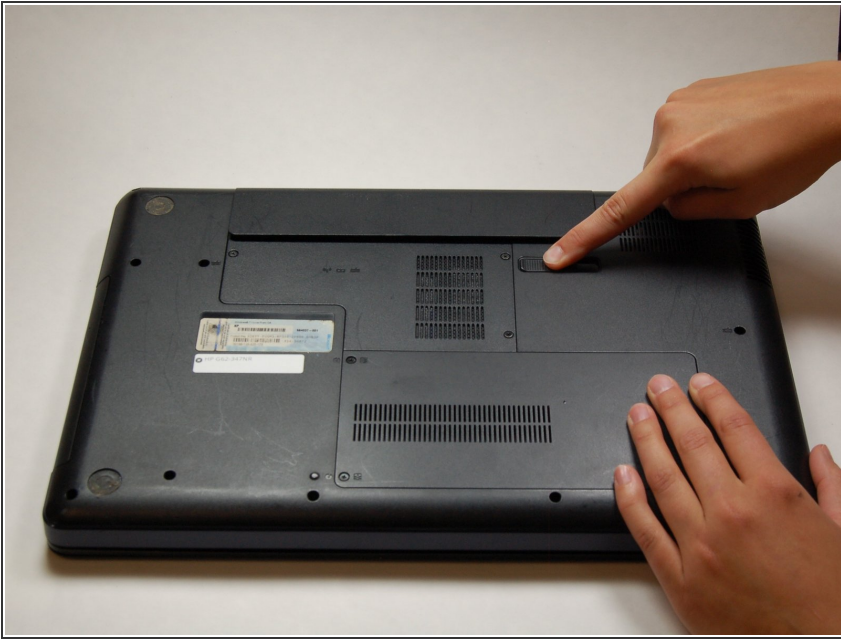




## TOOLS:

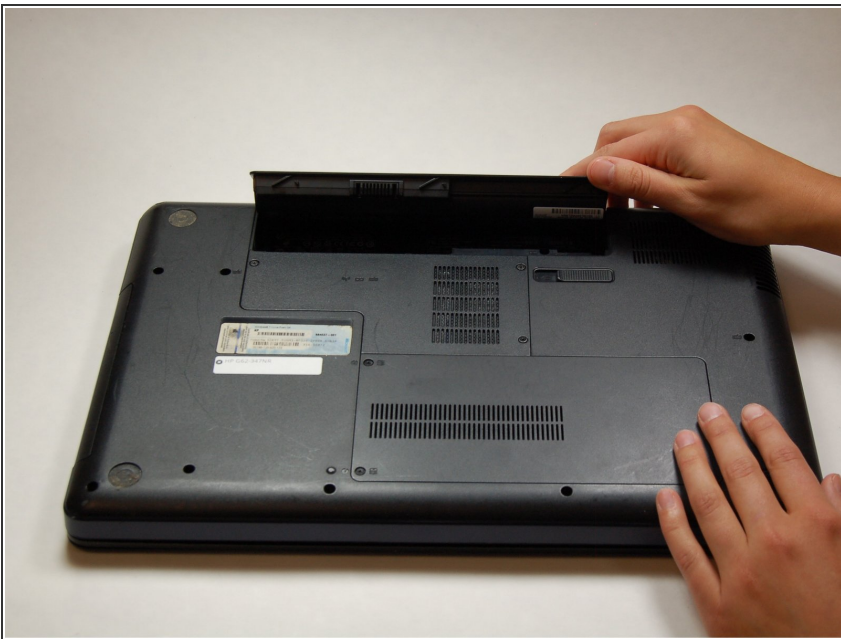
- [Phillips #1 Screwdriver](#) (1)
- [iFixit Opening Tools](#) (1)

## Step 1 — Keyboard



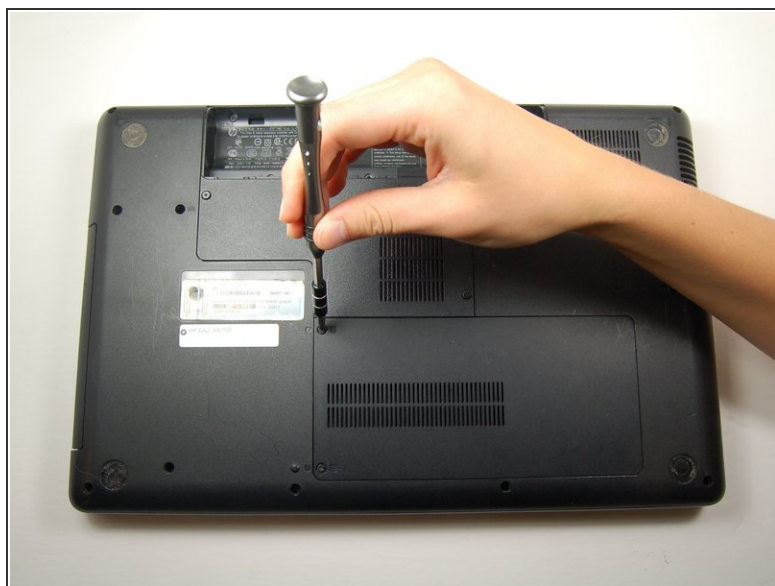
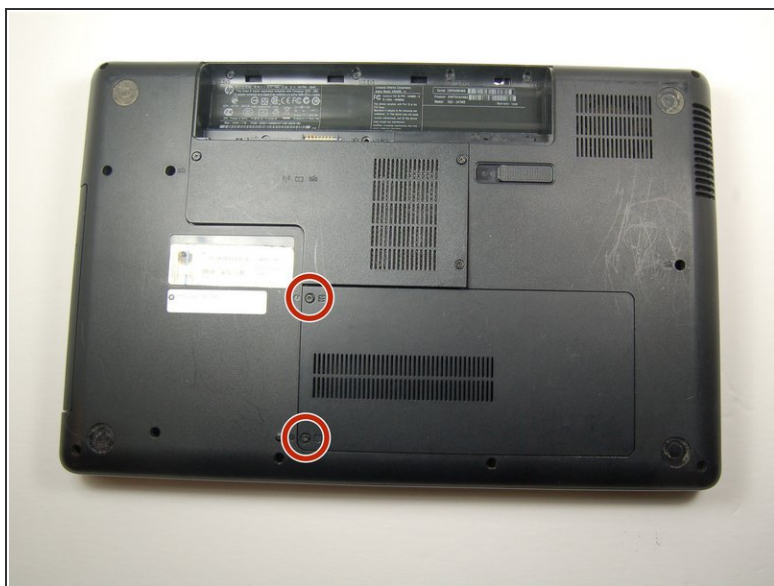
- ⚠ Make sure the device is turned off before removing the battery to avoid loss or corruption of files.
- Turn the device over so the bottom is facing up.
- Slide the battery release to the left until you hear a click.
- Once you hear a click, the battery will have been released from the battery compartment.

## Step 2



- Remove the battery, carefully, from the compartment.

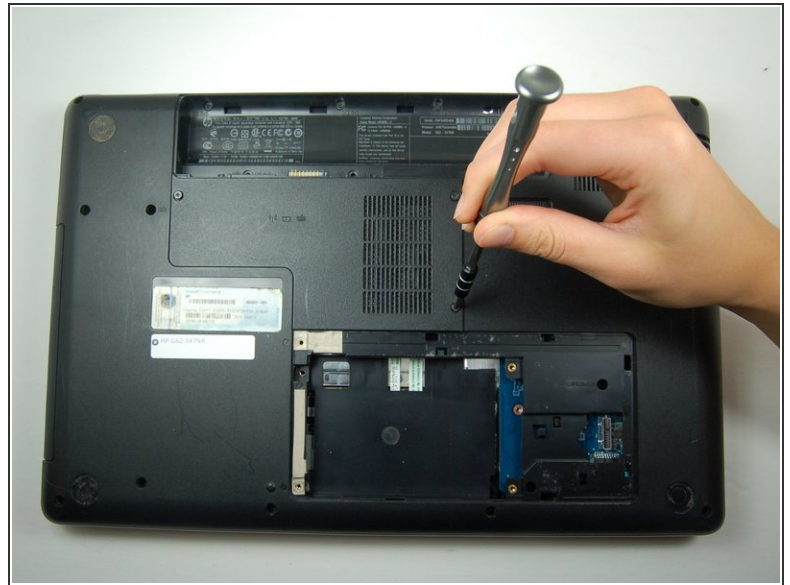
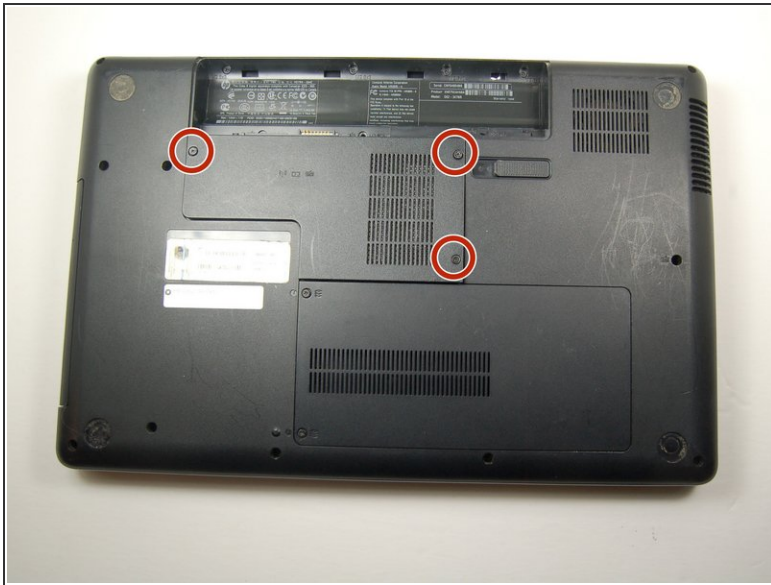
## Step 3



- Find the hard drive compartment with two Phillips head screws.
- Use the PH1 screwdriver to loosen and remove both screws.
- Gently remove the hard drive compartment.

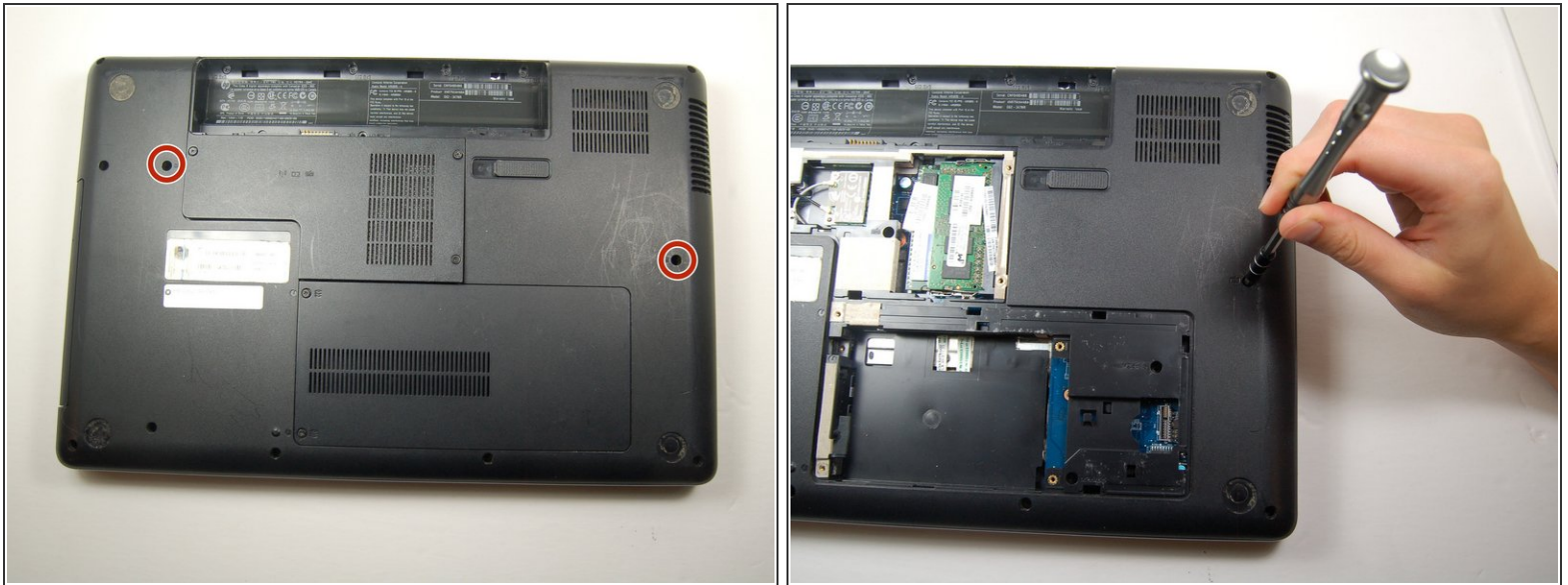


## Step 4



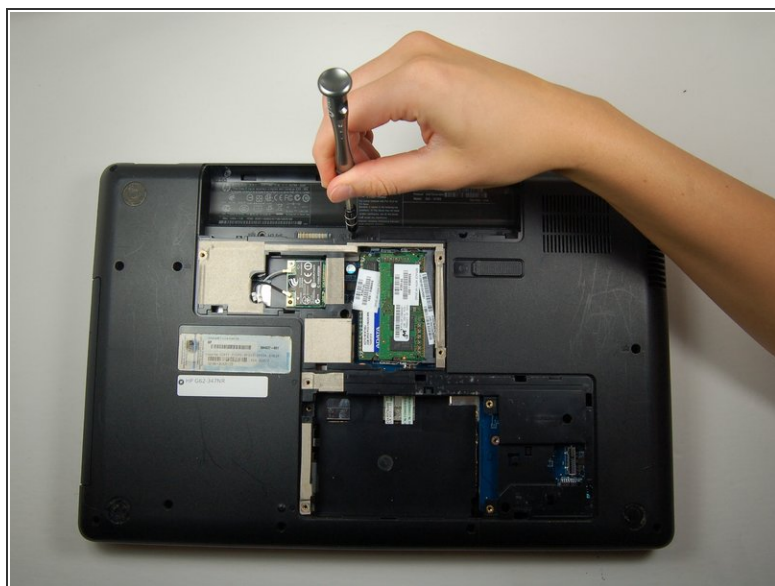
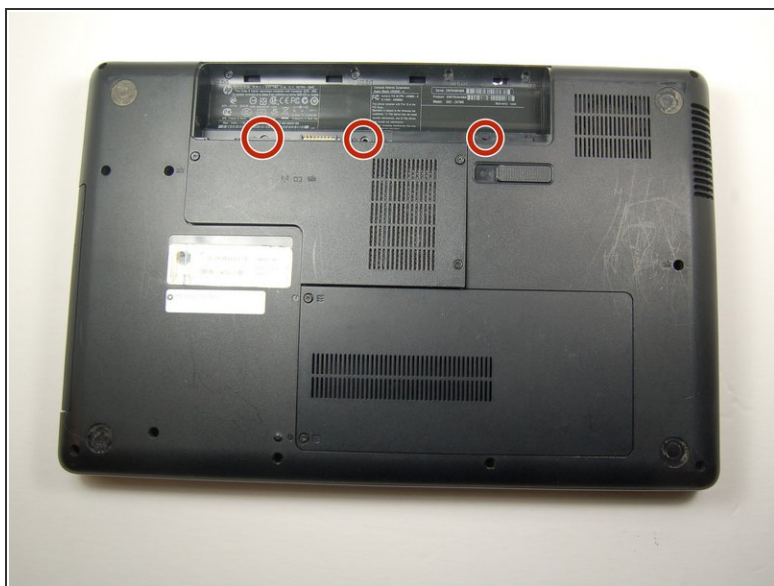
- Locate the three Phillips head screws on the compartment with the wifi and keyboard logos.
- Using the Phillips #1 screwdriver, remove the three screws.

## Step 5



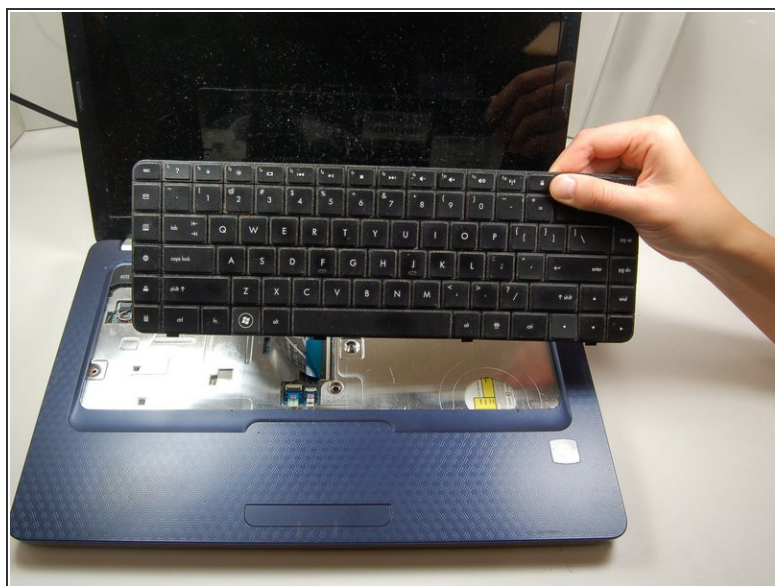
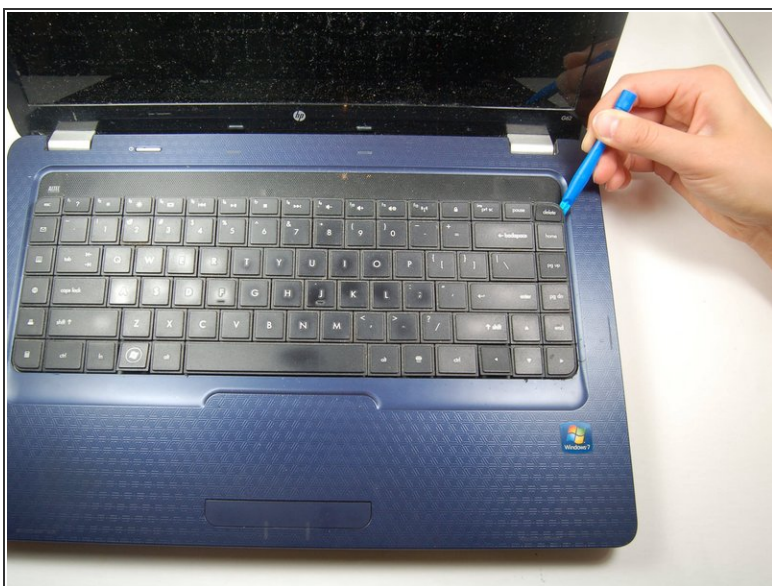
- Locate the two keyboard logos on back of the computer.
- Find the Phillips head screws in the hole next to the logo.
- Remove the two screws using a Phillips #1 screwdriver.

## Step 6



- In the battery compartment, locate the three keyboard logos.
- Find the Phillips head screws next to each logo.
- Remove the three screws using the Phillips #1 screwdriver.

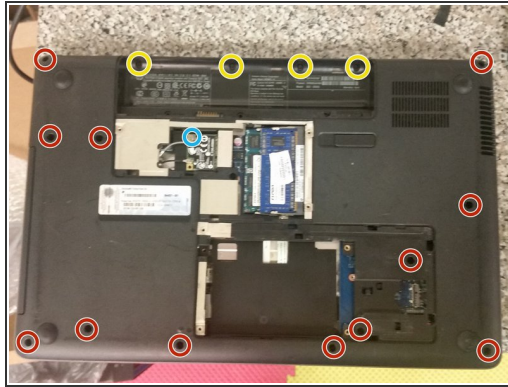
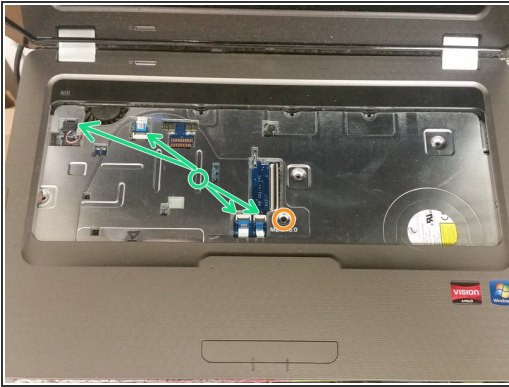
## Step 7



- Place the plastic opening tool between the keyboard and the motherboard.
- Gently pry the entire keyboard up and away from the laptop's motherboard.
- Once you have part of the keyboard separated, run your fingers around the edge of the keyboard to separate the entire thing.

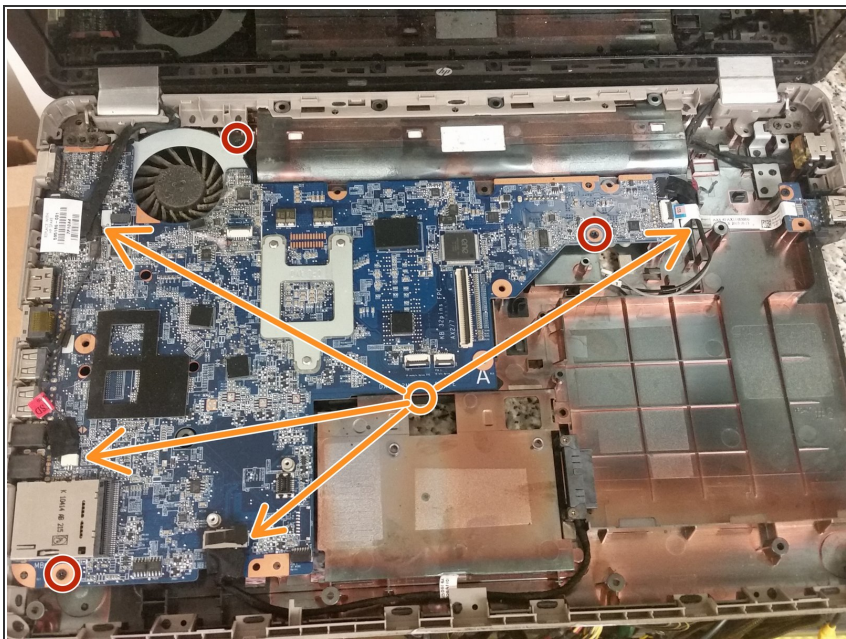


## Step 8 — Remove palmrest



- Remove the single M2.5x5 blue-painted screw securing the palmrest, from under where the keyboard was.
- Remove the connectors from the motherboard.
- Close the laptop's screen, and flip the laptop over.
- Remove the twelve M2.5x6.5 red-painted screws.
- Remove the four M2.5x3 screws securing the palmrest to the base.
- Remove the screw for the wireless card, as well as the wireless antennas, and take the wireless card out.

## Step 9 — Remove motherboard



- Remove the two blue-painted M2.5x4 screws securing the motherboard to the base.
- Remove all connectors from the motherboard.
- Transfer your heatsink, processor, and memory to the replacement board. You're done!

To reassemble your device, follow these instructions in reverse order.