



HP G62-223CL Hard Drive Replacement

This guide will show the user how to remove the hard drive.

Written By: Garret Layton



INTRODUCTION

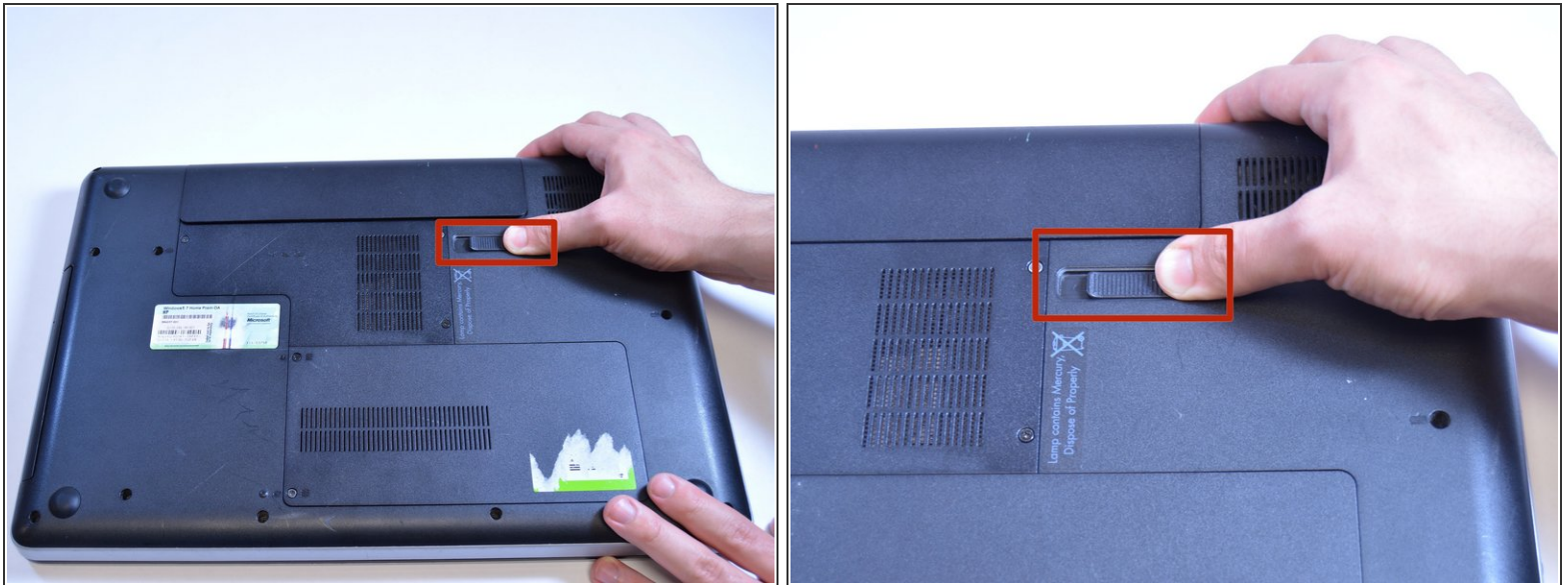
This guide will show the user how to remove the hard drive.




TOOLS:

- [Phillips #0 Screwdriver](#) (1)
-

Step 1 — Battery Removal



 Removing the battery while the laptop is still on may corrupt your files.

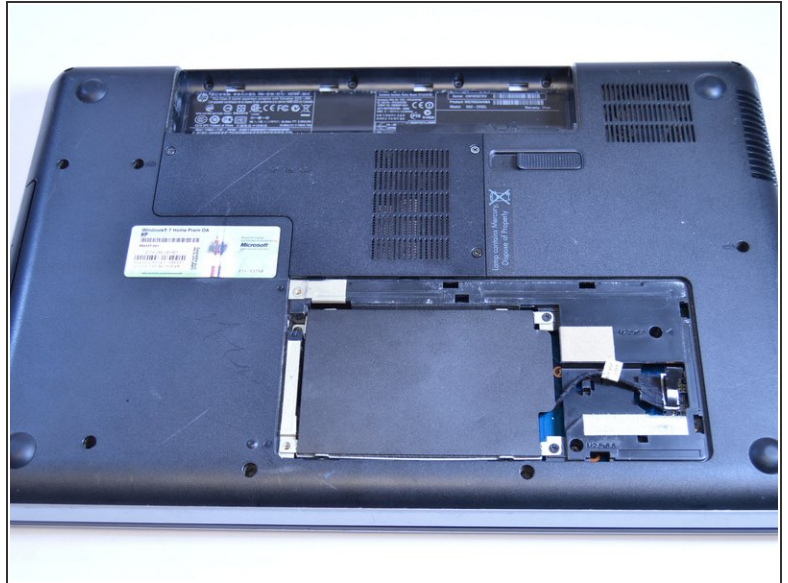
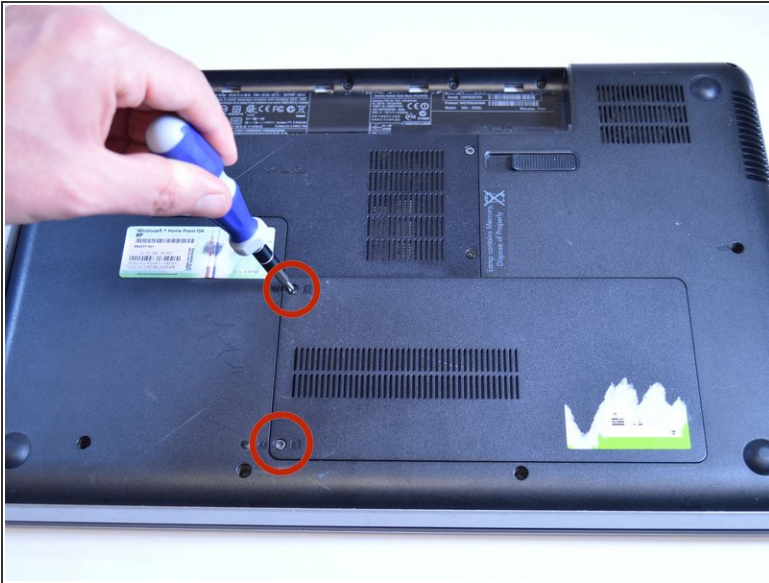
- Turn the device over to expose the bottom of the device.
- Slide the battery release all the way to the left.
- There will be a click and the battery will be released from its compartment.

Step 2



- Carefully remove the battery from its compartment.

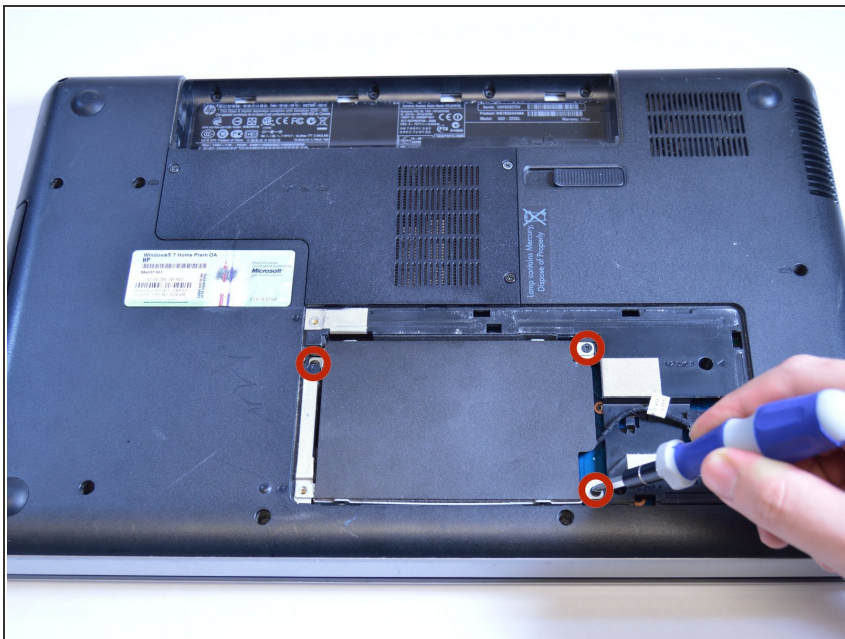
Step 3 — Hard Drive



- Locate the two Phillips head retaining screws which secure the hard drive compartment.
- Use a Phillips #0 screwdriver to loosen the retaining screws.
- Remove the panel covering the compartment.

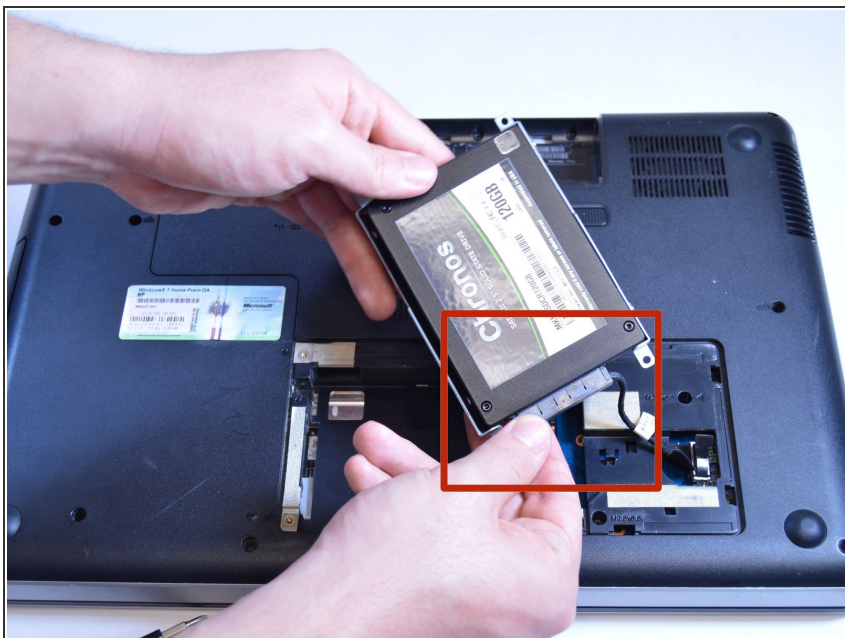
⚠ Ground yourself before attempting to touch any components. To ground yourself, touch a conductive metal to eliminate any static buildup in your body, which can damage computer components.

Step 4



- Locate the three 6 mm Phillips head screws for the hard drive.
- Use a Phillips #0 screwdriver to remove the screws.

Step 5



- Remove the hard drive from the compartment.
- Pull the connector cable from the end of the hard drive.

Step 6



- Locate the two 6 mm Phillips head screws on each side of the hard drive.
- Use a Phillips #0 screwdriver to remove the screws.
- Remove the cover from the hard drive.

To reassemble your device, follow these instructions in reverse order.