



HP G62-223CL Optical Drive Replacement

This guide will show the user how to remove the optical drive.

Written By: Garret Layton



INTRODUCTION

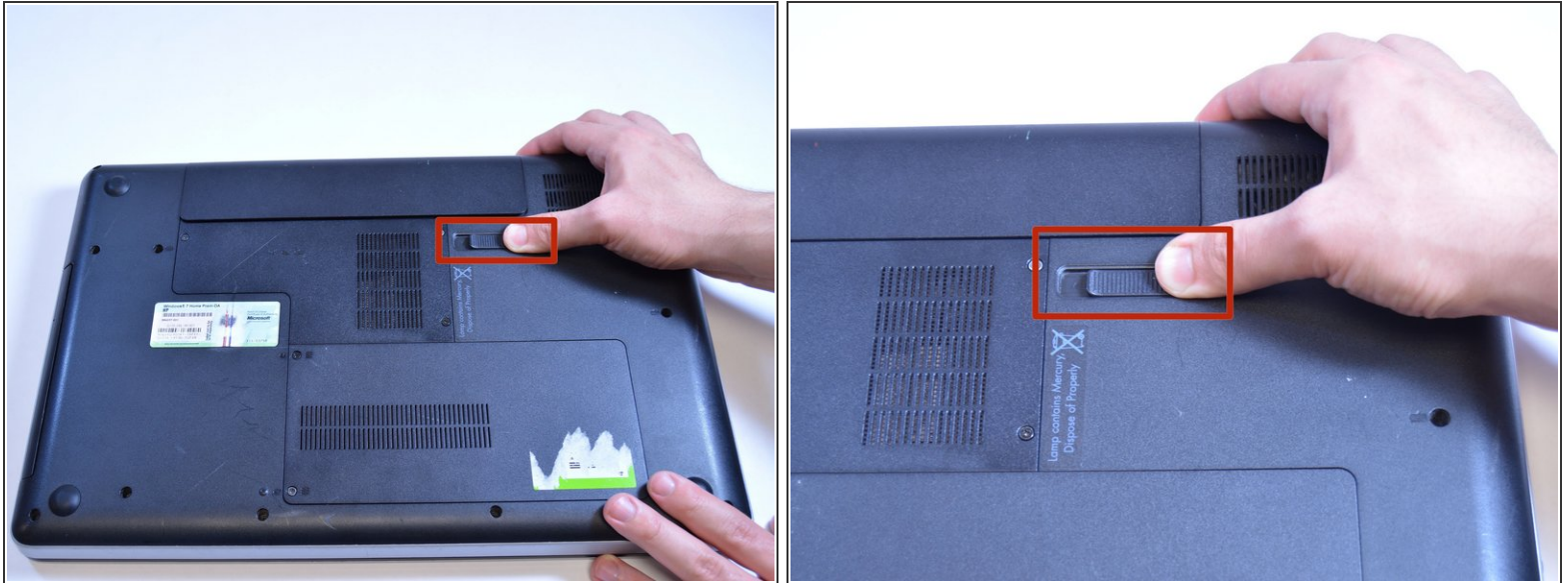
This guide will show the user how to remove the optical drive.




TOOLS:

- [Phillips #0 Screwdriver](#) (1)
 - [iFixit Opening Tools](#) (1)
-

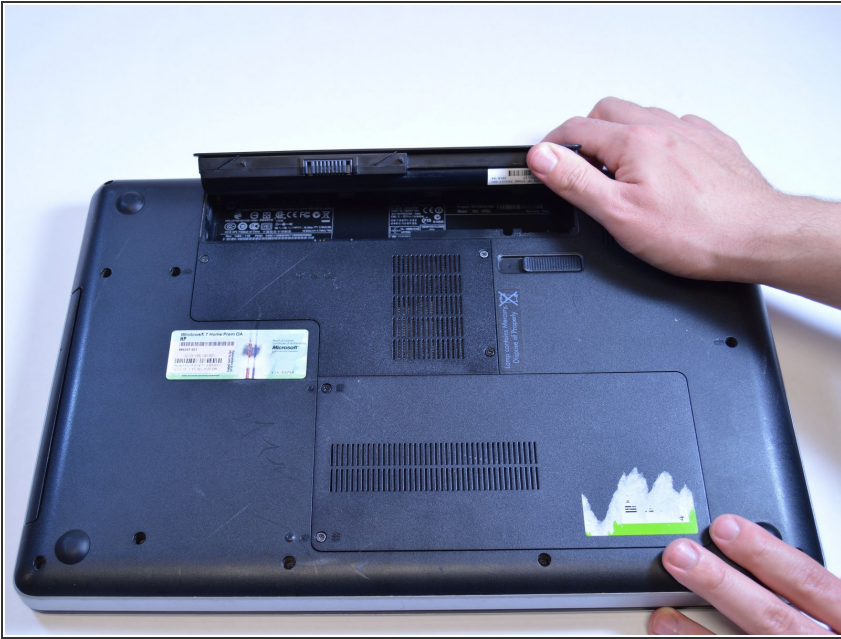
Step 1 — Battery Removal



 Removing the battery while the laptop is still on may corrupt your files.

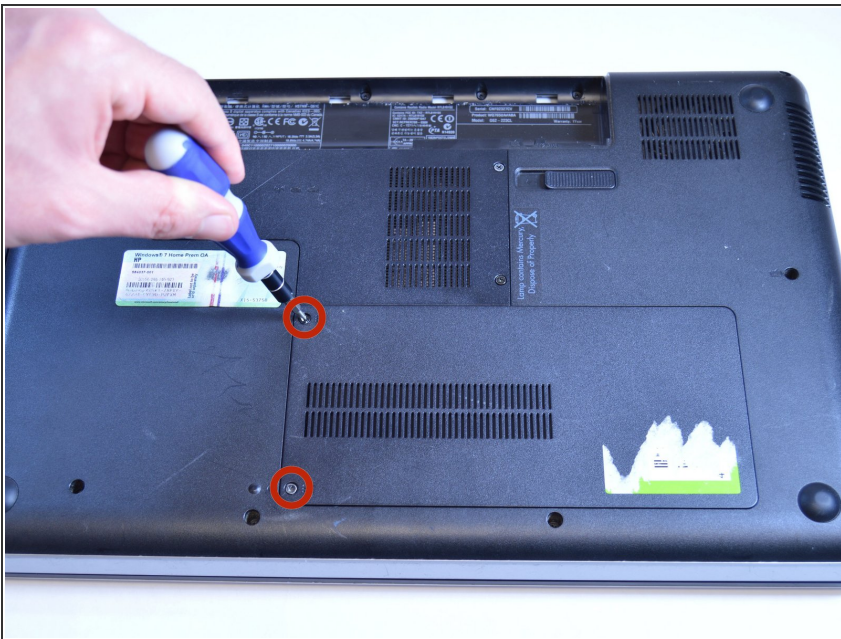
- Turn the device over to expose the bottom of the device.
- Slide the battery release all the way to the left.
- There will be a click and the battery will be released from its compartment.

Step 2



- Carefully remove the battery from its compartment.

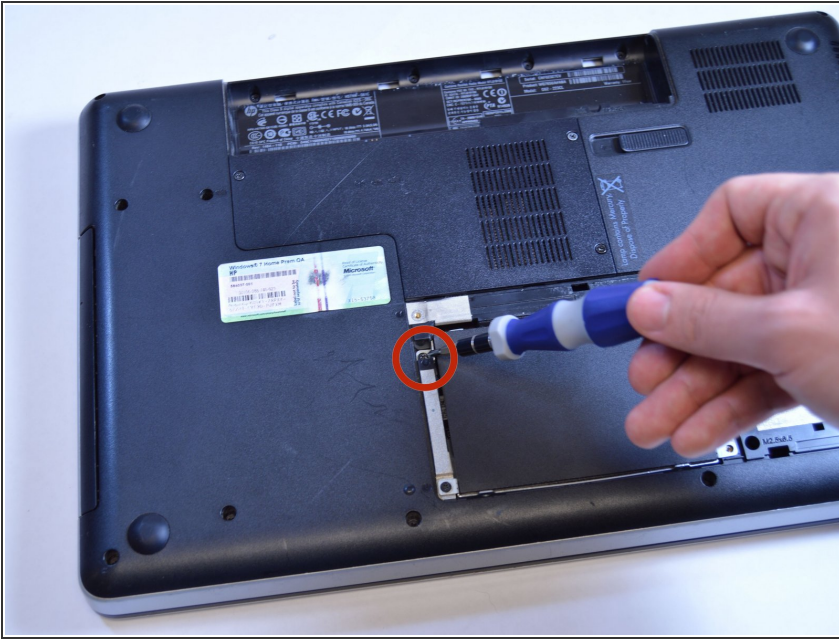
Step 3 — Optical Drive



- Locate two Phillips head retaining screws which secure the hard drive compartment.
- Use a Phillips #0 screwdriver to loosen the retaining screws.
- Remove the panel covering the compartment.

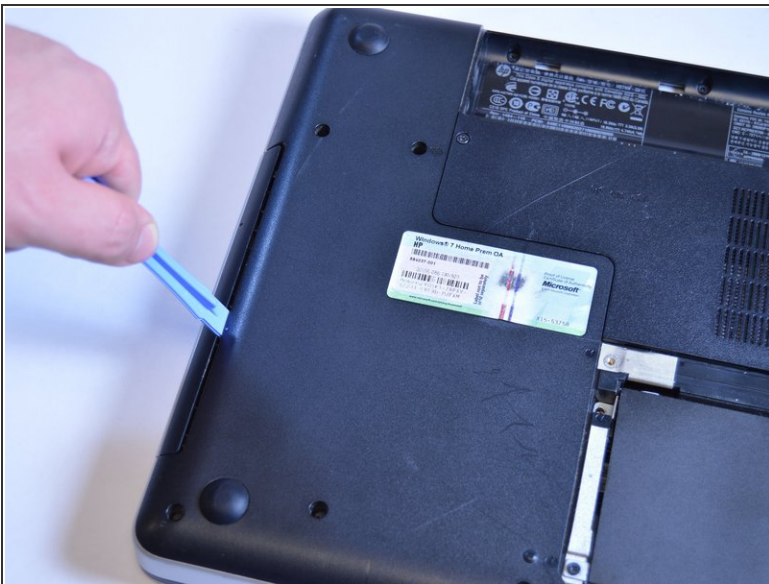
⚠ Ground yourself before attempting to touch any components. To ground yourself, touch a conductive metal to eliminate any static buildup in your body, which can damage computer components.

Step 4



- Locate the 6 mm Phillips head screw to the left of the hard drive.
- Use a Phillips #0 screwdriver to remove the screw.

Step 5



- Once the screw is removed, use a plastic opening tool and place it between the body of the computer and the optical drive.
- Apply enough pressure to loosen the optical drive.
- The optical drive can then be removed by hand.

This document was generated on 2019-09-24 02:46:07 PM (MST).

To reassemble your device, follow these instructions in reverse order.