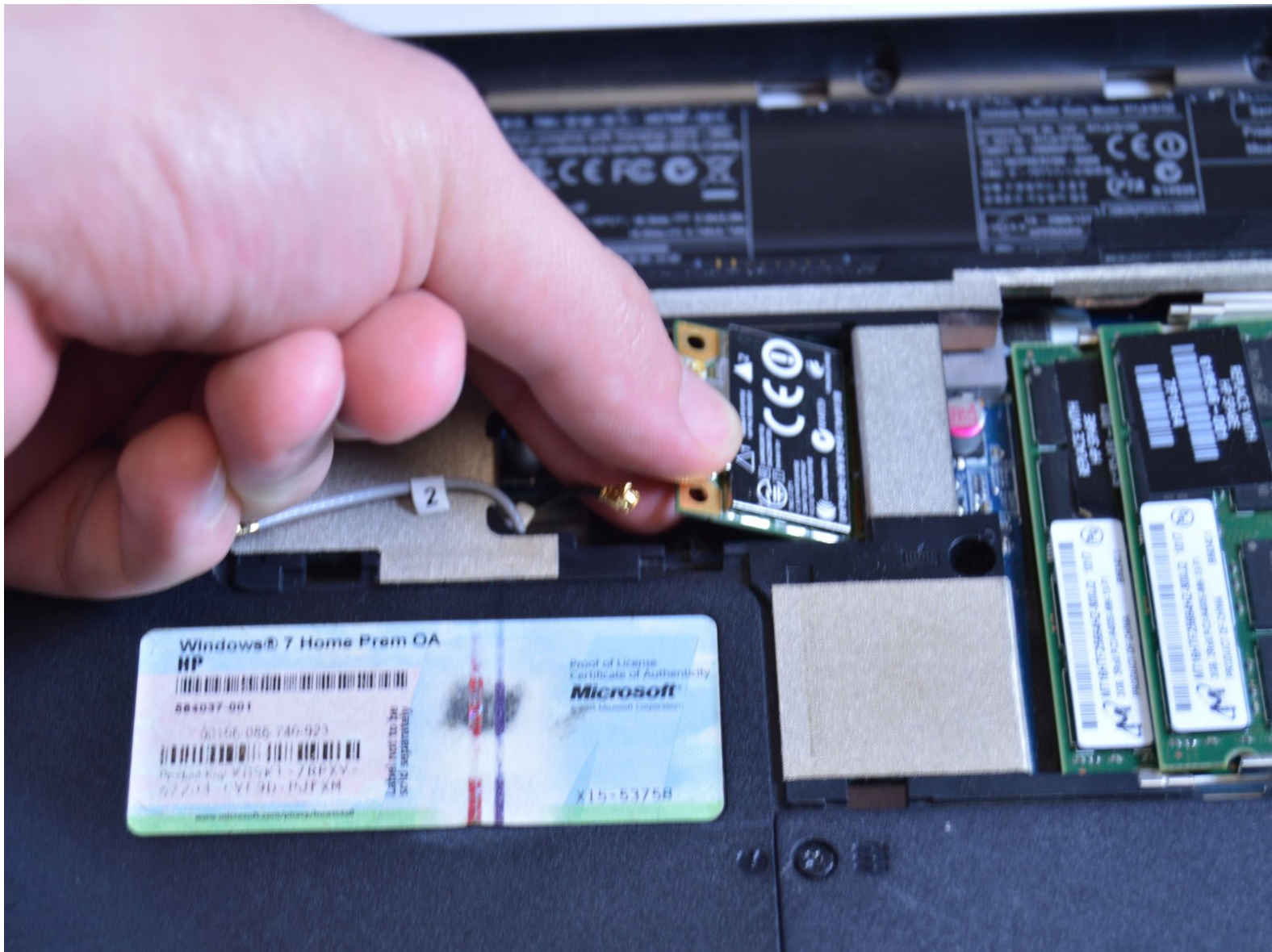




# HP G62-223CL Wireless Card Replacement

This guide will show the user how to remove the wireless card.

Written By: Garret Layton



---

# INTRODUCTION

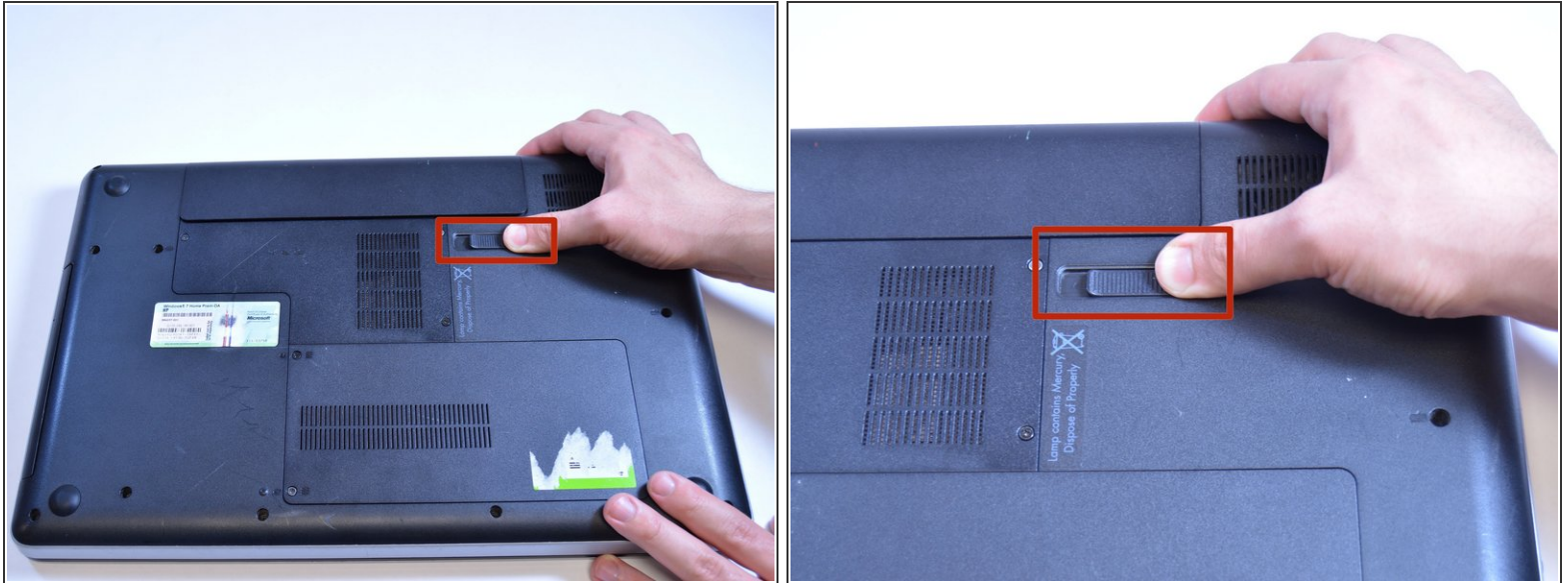
This guide will show the user how to remove the wireless card.




## TOOLS:

- [Phillips #0 Screwdriver](#) (1)
  - [Tweezers](#) (1)
-

## Step 1 — Battery Removal



 Removing the battery while the laptop is still on may corrupt your files.

- Turn the device over to expose the bottom of the device.
- Slide the battery release all the way to the left.
- There will be a click and the battery will be released from its compartment.

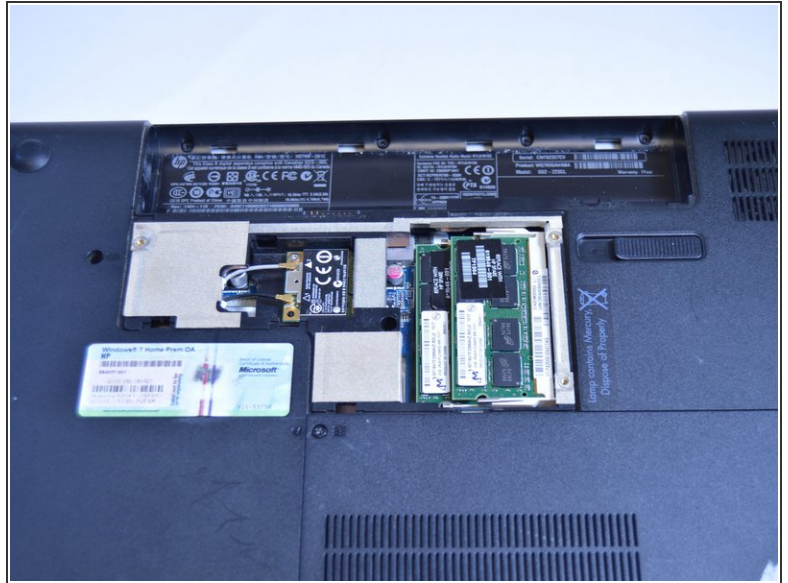
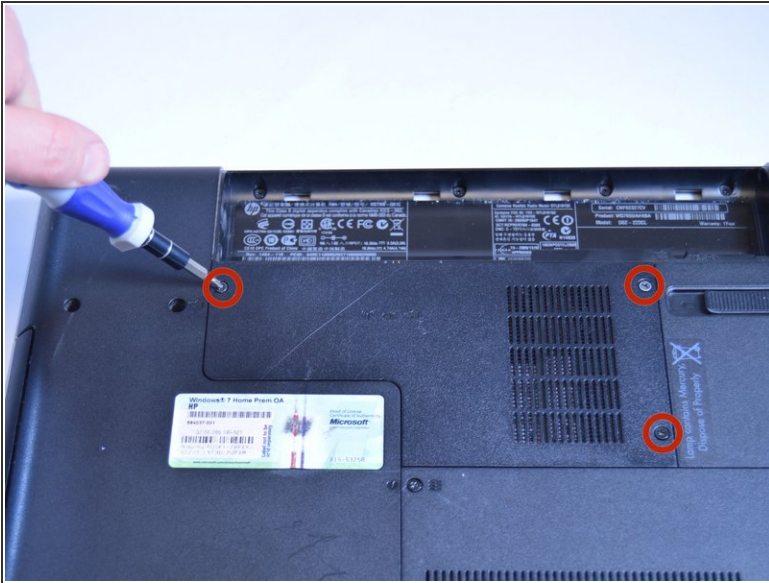
## Step 2



- Carefully remove the battery from its compartment.



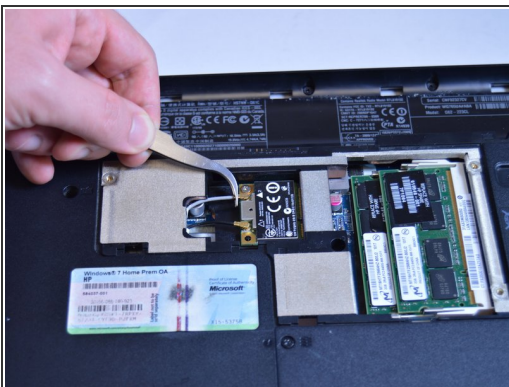
## Step 3 — Wireless Card



- Locate three Phillips head retaining screws which secure the compartment.
- Use a Phillips #0 screwdriver to loosen the retaining screws.
- Remove the panel covering the compartment.

⚠ Ground yourself before attempting to touch any components. To ground yourself, touch a conductive metal to eliminate any static buildup in your body, which can damage computer components.

## Step 4



- Use tweezers to disconnect the gray cable and the black cable from the wireless card.

## Step 5



- Use a Phillips #0 screwdriver to remove the single 4mm screw from the corner of the wireless card.

## Step 6



- Carefully lift and pull wireless card. It is removed!

To reassemble your device, follow these instructions in reverse order.