



# HP G71t-300 Hard Drive Replacement

The hard disk drive (HDD) is the data storage device that stores and receives digital information gathered by the user. This guide helps for replacing HDD that are damaged or unreadable.

Written By: Rohan Mathew



## INTRODUCTION

Since the Hard drive bay is 2.5", you can replace the HDD with either a 2.5" HDD or a Solid State Drive (SSD). Note that SSD's are more expensive compared to HDD's of similar storage size.

---

### TOOLS:

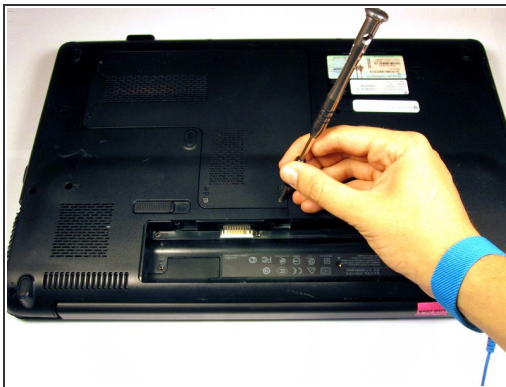
- [Phillips #0 Screwdriver](#) (1)
  - [Magnetic Project Mat](#) (1)
-

## Step 1 — Hard Drive



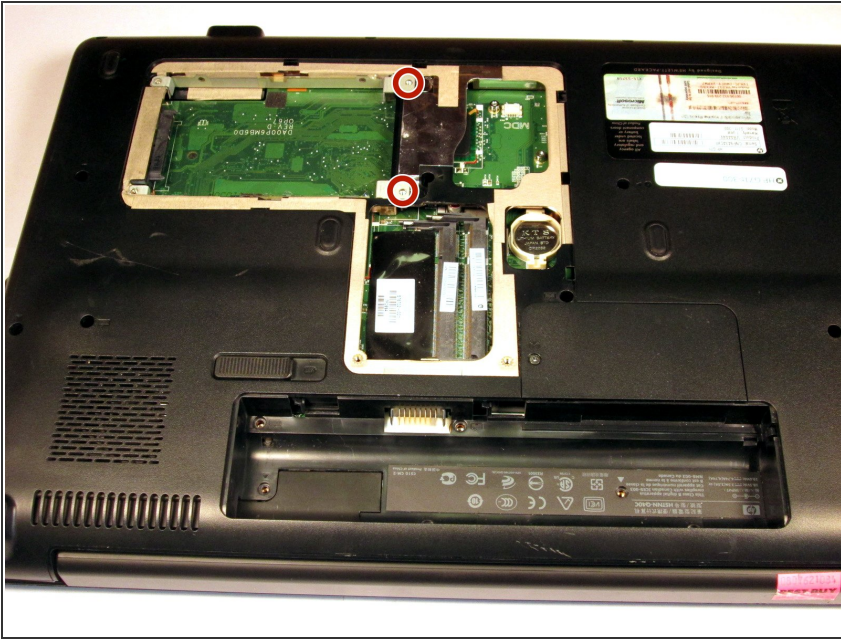
- Ground yourself by either touching an unpainted metal surface or by using the Anti-Static wrist strap.
- Turn off the computer and remove the charger from the charging port.
- Turn the laptop over and slide the battery release catch to the right. The battery will pop up from its slot. Remove it using your fingers

## Step 2



- The access panel to the hard drive and RAM is held in place by four screws. Loosen them using a Phillips #0 screwdriver.
- Gently lift the panel away from the computer.

## Step 3



- Remove the two 6mm screws using the Phillips #0 screwdriver.
- Gently remove the hard drive from the socket.

To reassemble your device, follow these instructions in reverse order.