



HP G71t-400 WiFi Card Replacement

In this guide will be a step-by-step instructions on how to replace your WiFi card in your HP G71t-400.

Written By: Nicholas Castro





TOOLS:

- [Essential Electronics Toolkit \(1\)](#)
-

Step 1 — WiFi Card



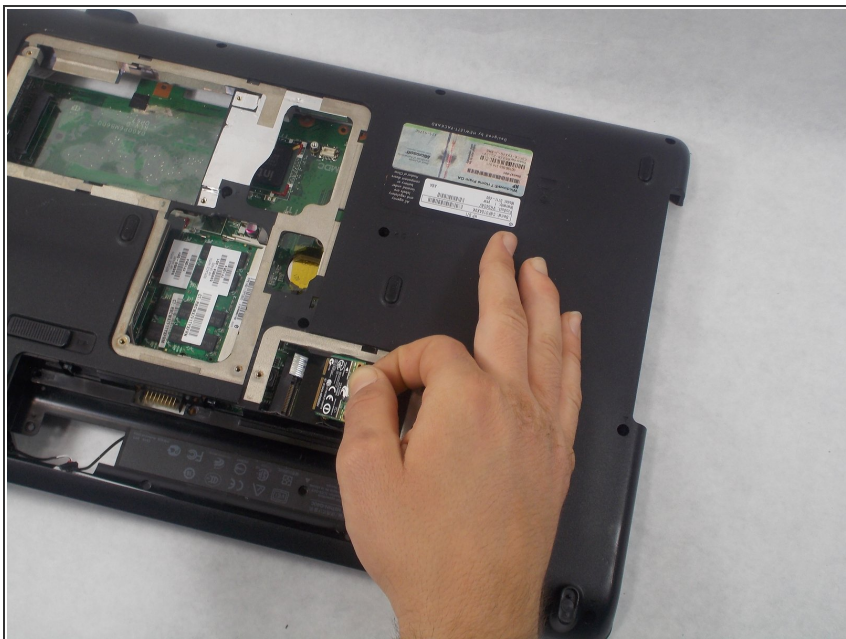
- Lay the laptop down so the bottom is facing up.
- Push the slide button, circled in photo 1, to release the battery.
- Action in picture 2 shows the direction and release.
- Tilt the battery back in the direction it popped up in and remove the battery.
- This ensures there is no power in the system that could potentially short out any components.

Step 2



- Remove the only circled screw.
- Lift and remove the cover exposing the WiFi card.

Step 3



- Disconnect the two wires attached. *Making note to where each wire was connected for easy install.*
- Extract the WiFi card.

To reassemble your device, follow these instructions in reverse order.