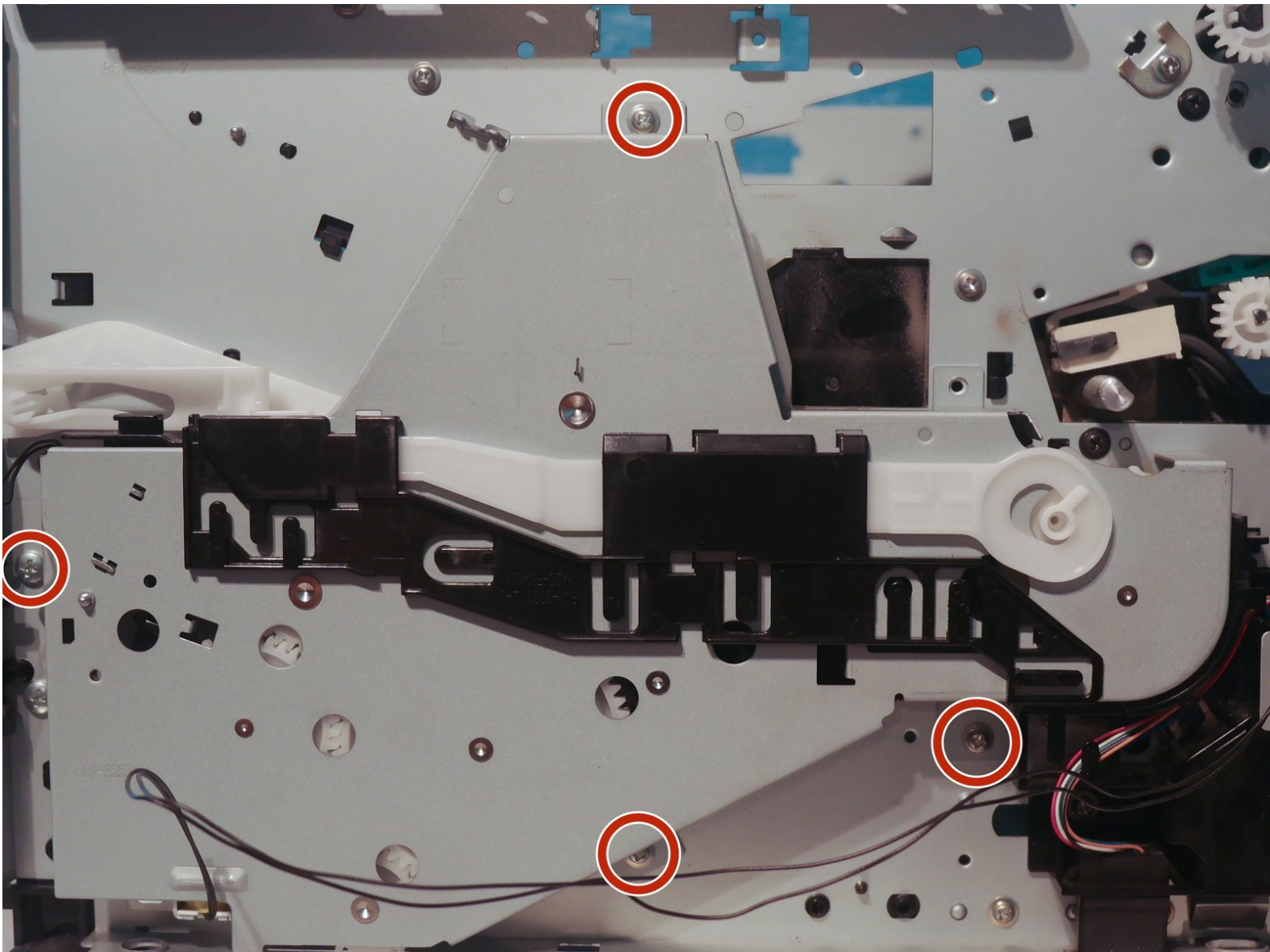




HP LaserJet 1160 or 1320 Main Gear Assembly and Pickup Solenoids Replacement

Written By: jrw01





TOOLS:

- [Metal Spudger Set](#) (1)
- [Phillips #0 Screwdriver](#) (1)



PARTS:

- [HP LaserJet 1160 or 1320 Main Gear Assembly](#) (1)

Step 1 — Left Side Cover



- Pull on the two tabs on the back of the printer to release the left side cover.
- Remove the cover by rotating it towards the front of the printer.

Step 2 — Right Side Cover



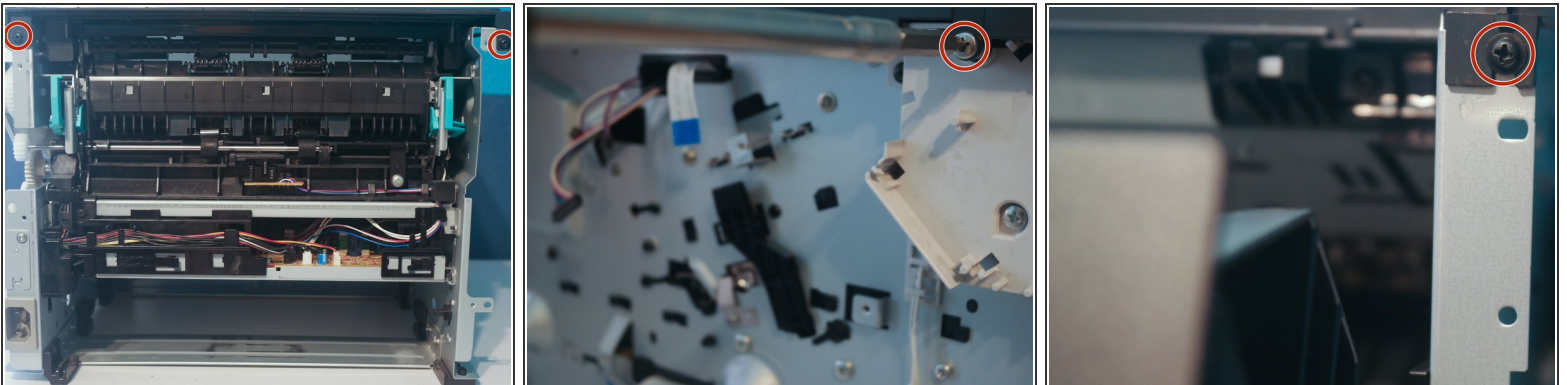
- With the printer turned so that the right side is facing upwards, use a metal spudger to disengage 3 tabs holding the right side cover in place.
- Lift the cover off of the printer.

Step 3 — Back Cover



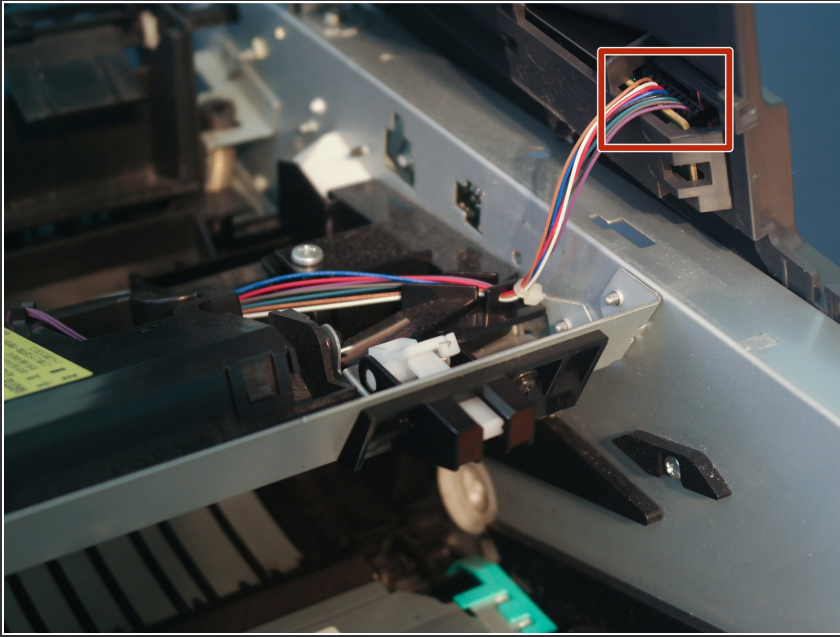
- Remove 4 screws on the back of the printer.
- Remove the back cover.

Step 4 — Top Cover



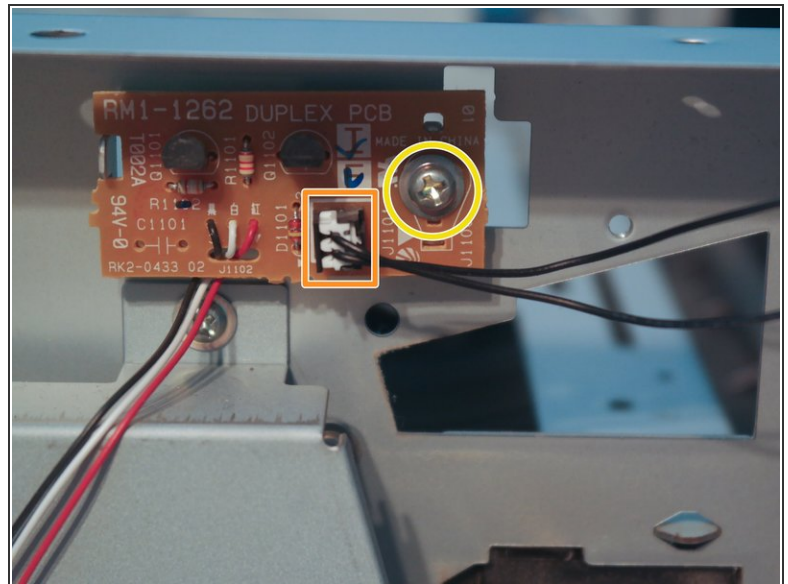
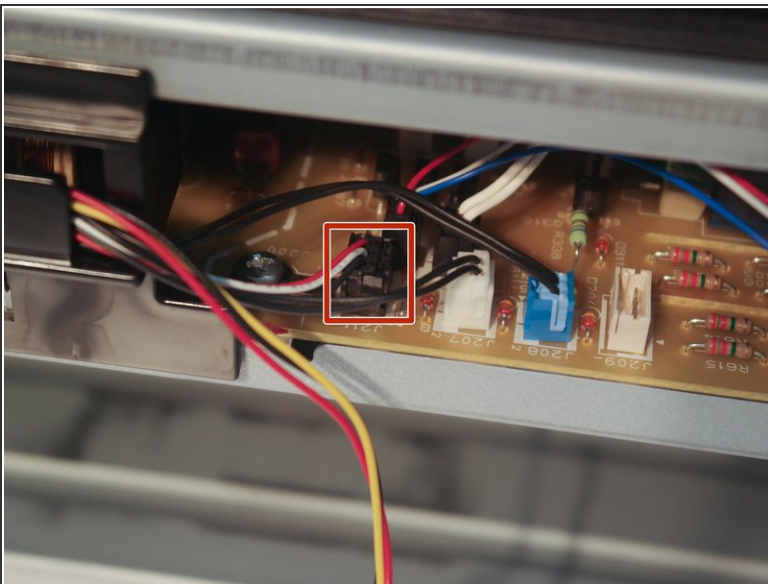
- Remove 2 screws on the back of the printer, one on the left, and one on the front.
- i** The second image shows the formatter removed, but it is not necessary to remove the formatter to replace the top cover.

Step 5 — Top Cover



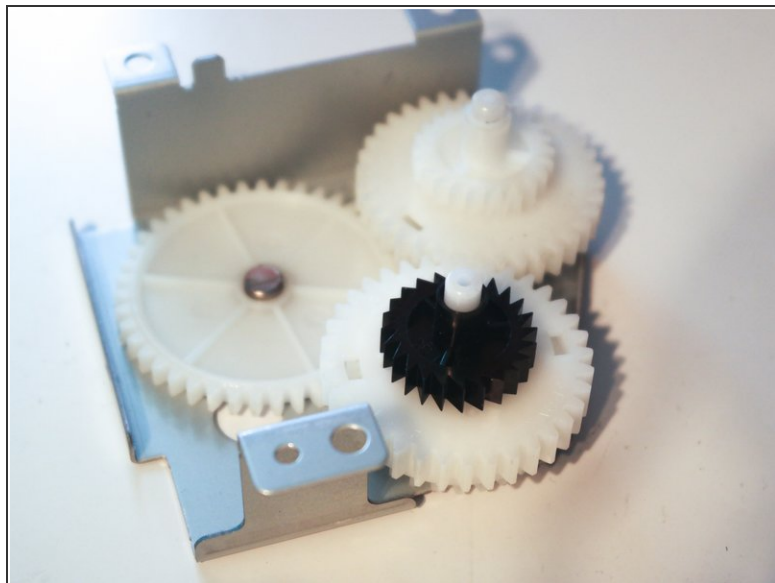
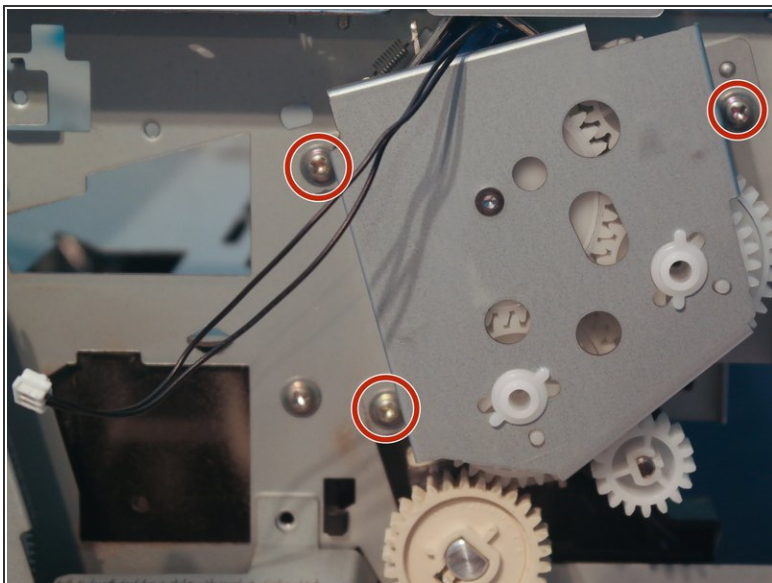
- Disconnect the control panel cable and remove the top cover.

Step 6 — Duplexer PCB



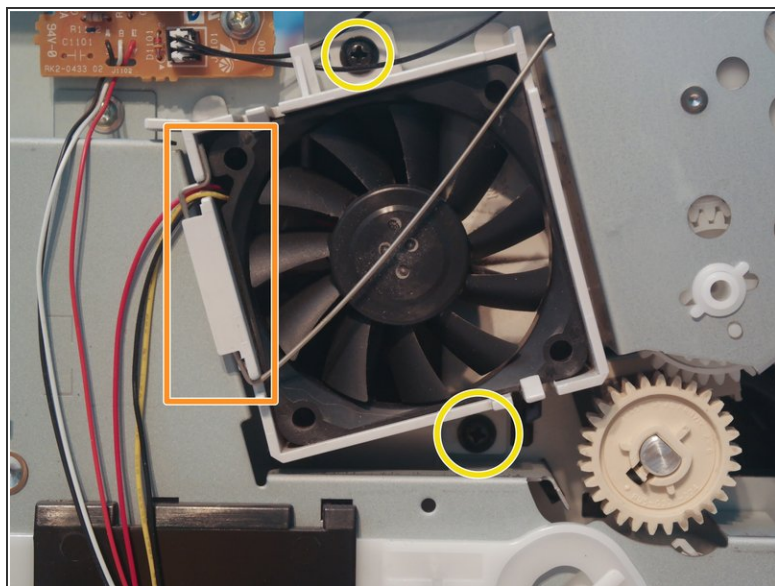
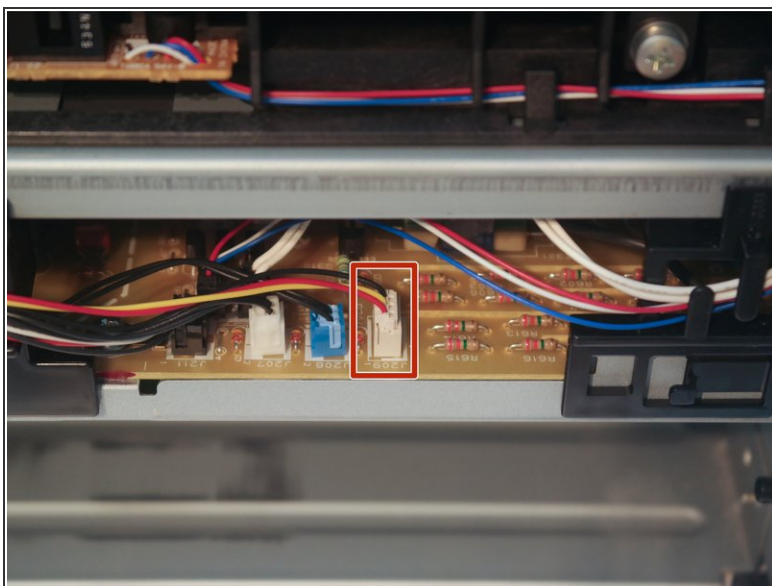
- Disconnect one cable from the main board of the printer.
- Disconnect the duplexer solenoid cable from the duplexer PCB.
- Remove one screw on the duplexer PCB and remove the PCB from the printer.

Step 7 — Duplexer Gears



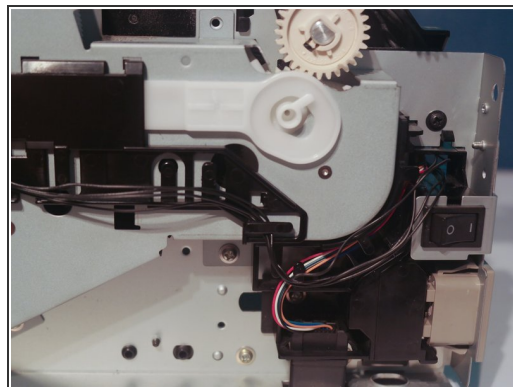
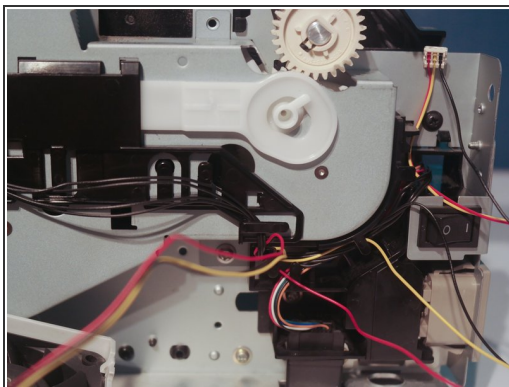
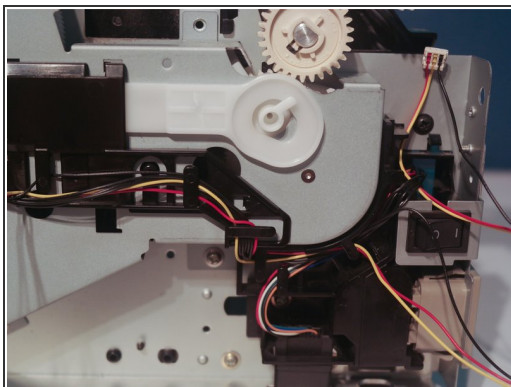
- Remove 3 screws holding the duplexer gears to the printer and remove the gears.

Step 8 — Fan



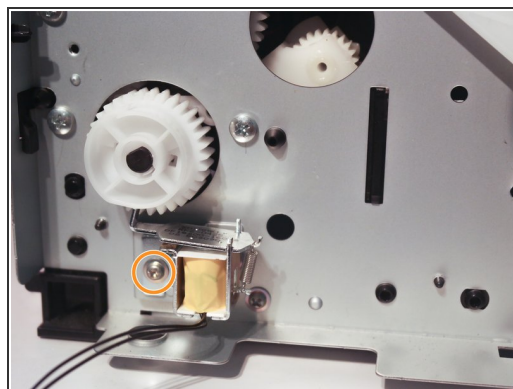
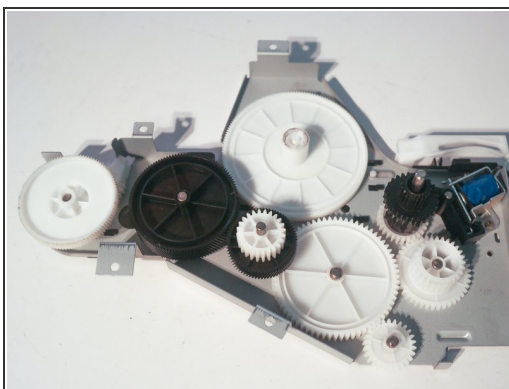
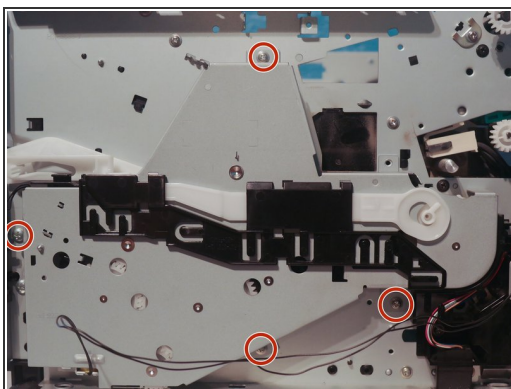
- Disconnect the fan cable from the main board of the printer.
- Remove the retaining clip holding the fan in.
- Remove the 2 screws holding the fan in.

Step 9 — Fan Cable



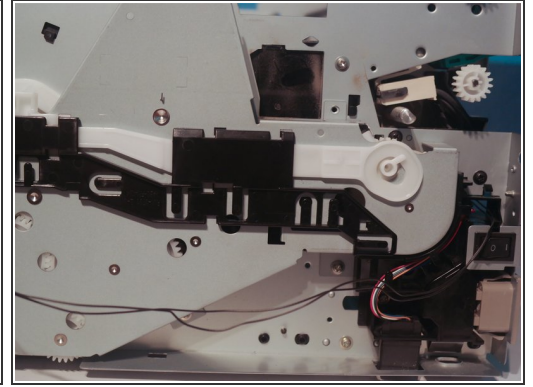
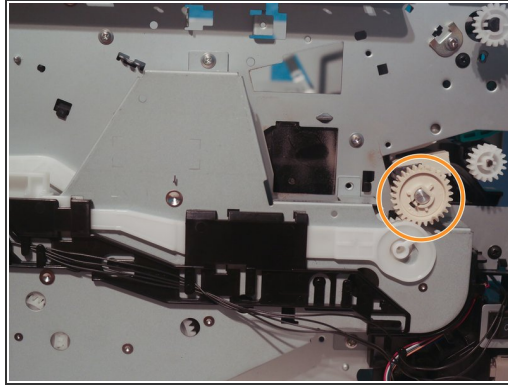
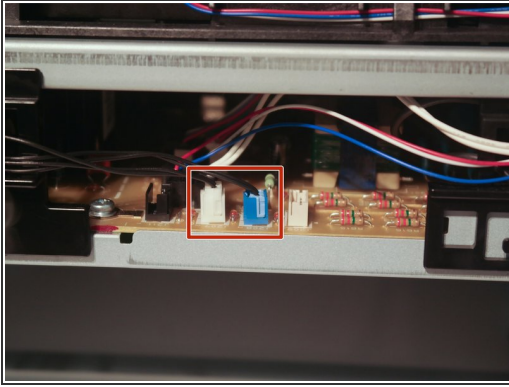
- Remove the fan cable from the cable guide.

Step 10 — Main Gear Assembly



- Remove 4 screws on the right side of the printer and remove the main gear assembly.
- Remove one screw and remove the tray 2 pickup solenoid.

Step 11 — Main Gear Assembly



- Disconnect 2 cables from the main board of the printer.
- Remove the gear from the fuser shaft by pressing on the tab with a spudger or similar tool.
- Remove the remaining cables from the cable guide.

To reassemble your device, follow these instructions in reverse order.