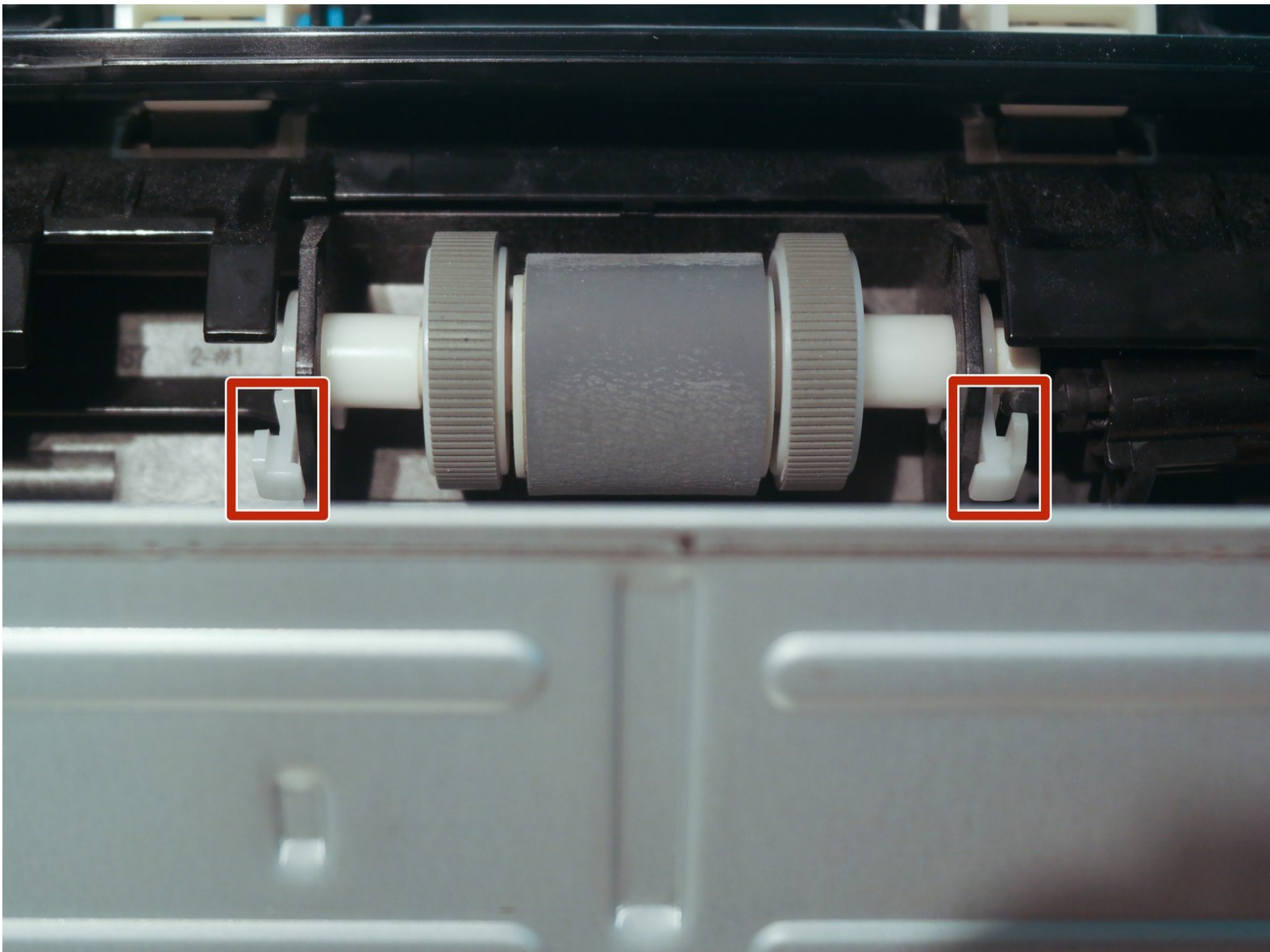




# HP LaserJet 1160 or 1320 Pickup Roller Replacement

Written By: jrw01





## TOOLS:

- [Metal Spudger Set](#) (1)
- [Phillips #0 Screwdriver](#) (1)



## PARTS:

- [HP LaserJet 1160 or 1320 Pickup Roller](#) (1)

## Step 1 — Left Side Cover



- Pull on the two tabs on the back of the printer to release the left side cover.
- Remove the cover by rotating it towards the front of the printer.

## Step 2 — Right Side Cover



- With the printer turned so that the right side is facing upwards, use a metal spudger to disengage 3 tabs holding the right side cover in place.
- Lift the cover off of the printer.

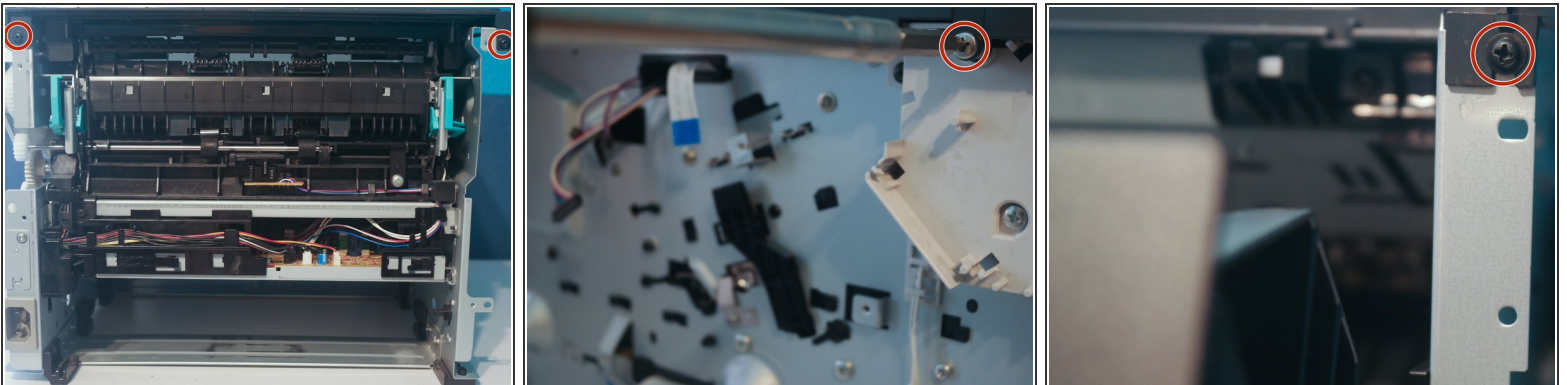


### Step 3 — Back Cover



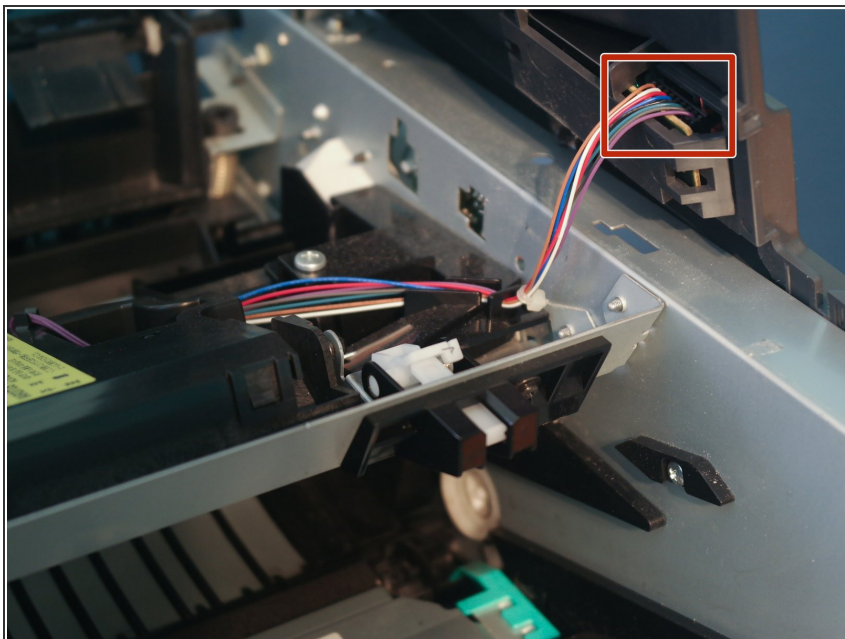
- Remove 4 screws on the back of the printer.
- Remove the back cover.

### Step 4 — Top Cover



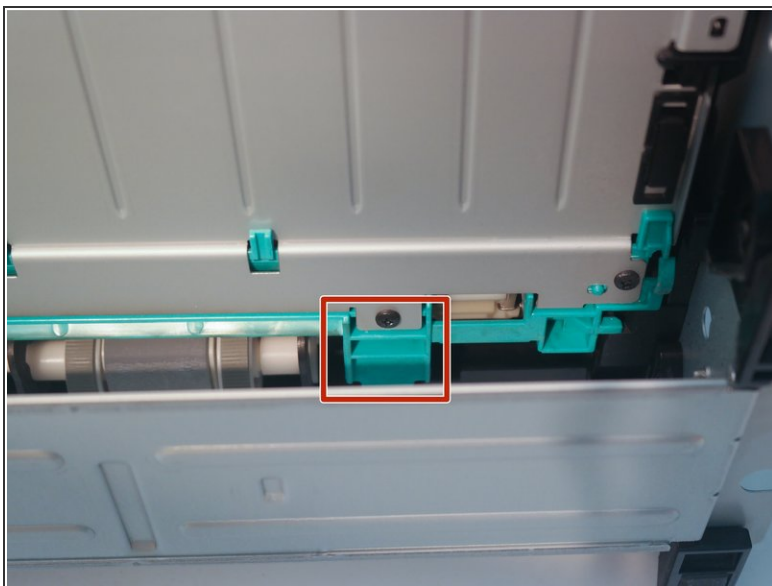
- Remove 2 screws on the back of the printer, one on the left, and one on the front.
- i** The second image shows the formatter removed, but it is not necessary to remove the formatter to replace the top cover.

## Step 5 — Top Cover



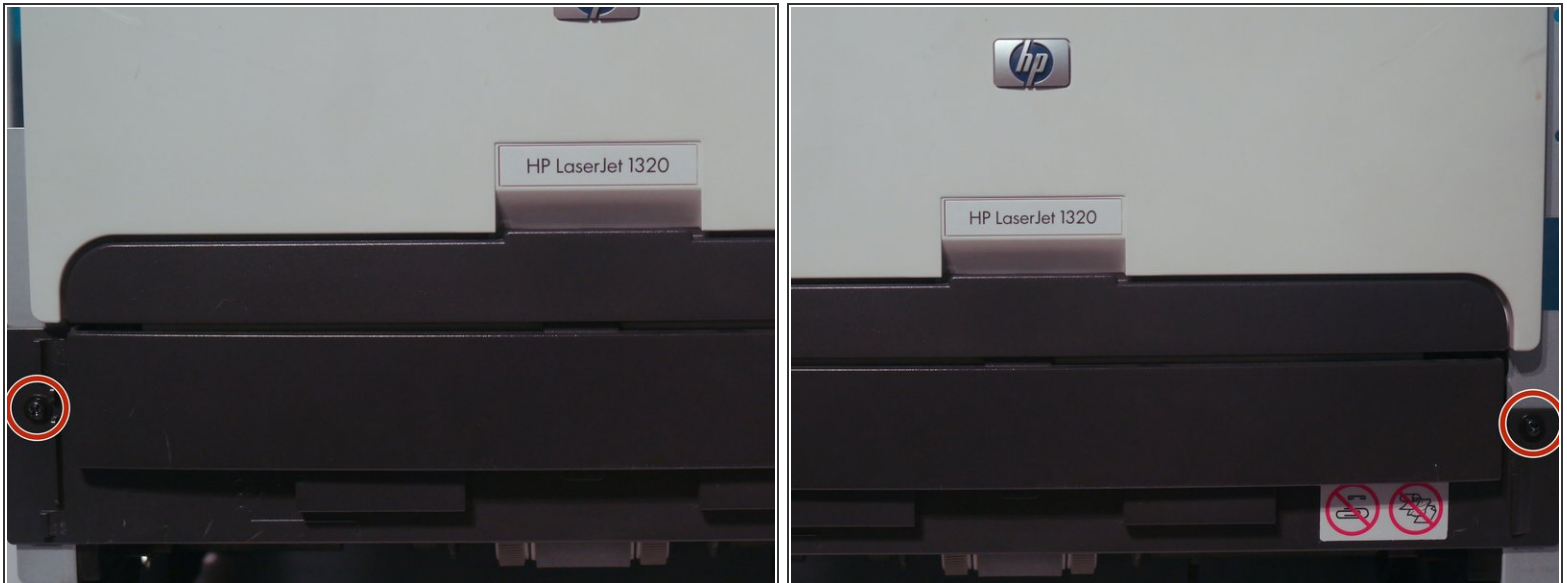
- Disconnect the control panel cable and remove the top cover.

## Step 6 — Duplexer Tray



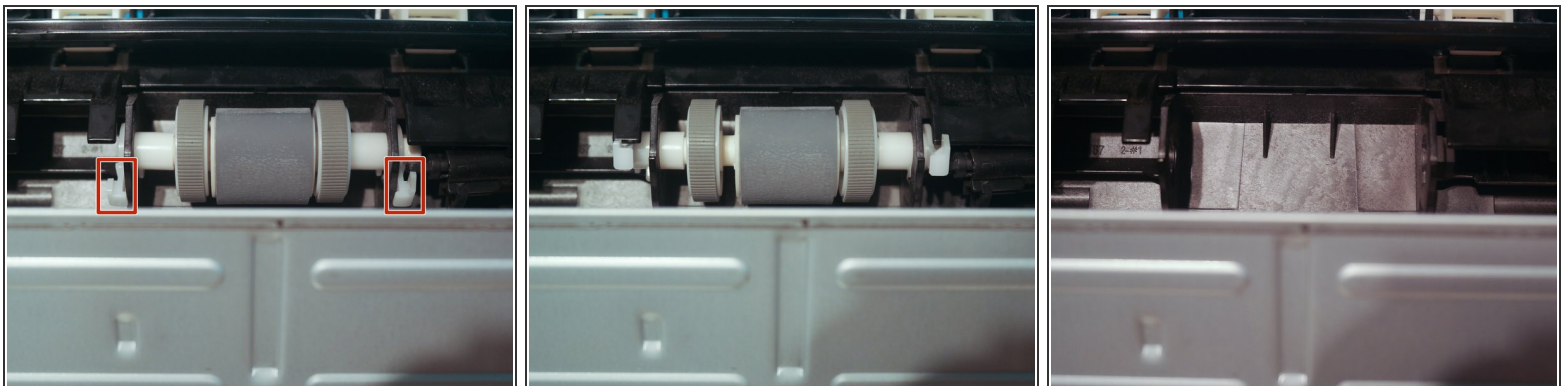
- Pull on the blue-green tab to release the duplexer tray.

## Step 7 — Cartridge Door



- Remove 2 screws from the front of the printer.
- Remove the cartridge door.

## Step 8 — Pickup Roller



- Remove the pickup roller by rotating the white tabs upwards and pulling them outwards.

To reassemble your device, follow these instructions in reverse order.