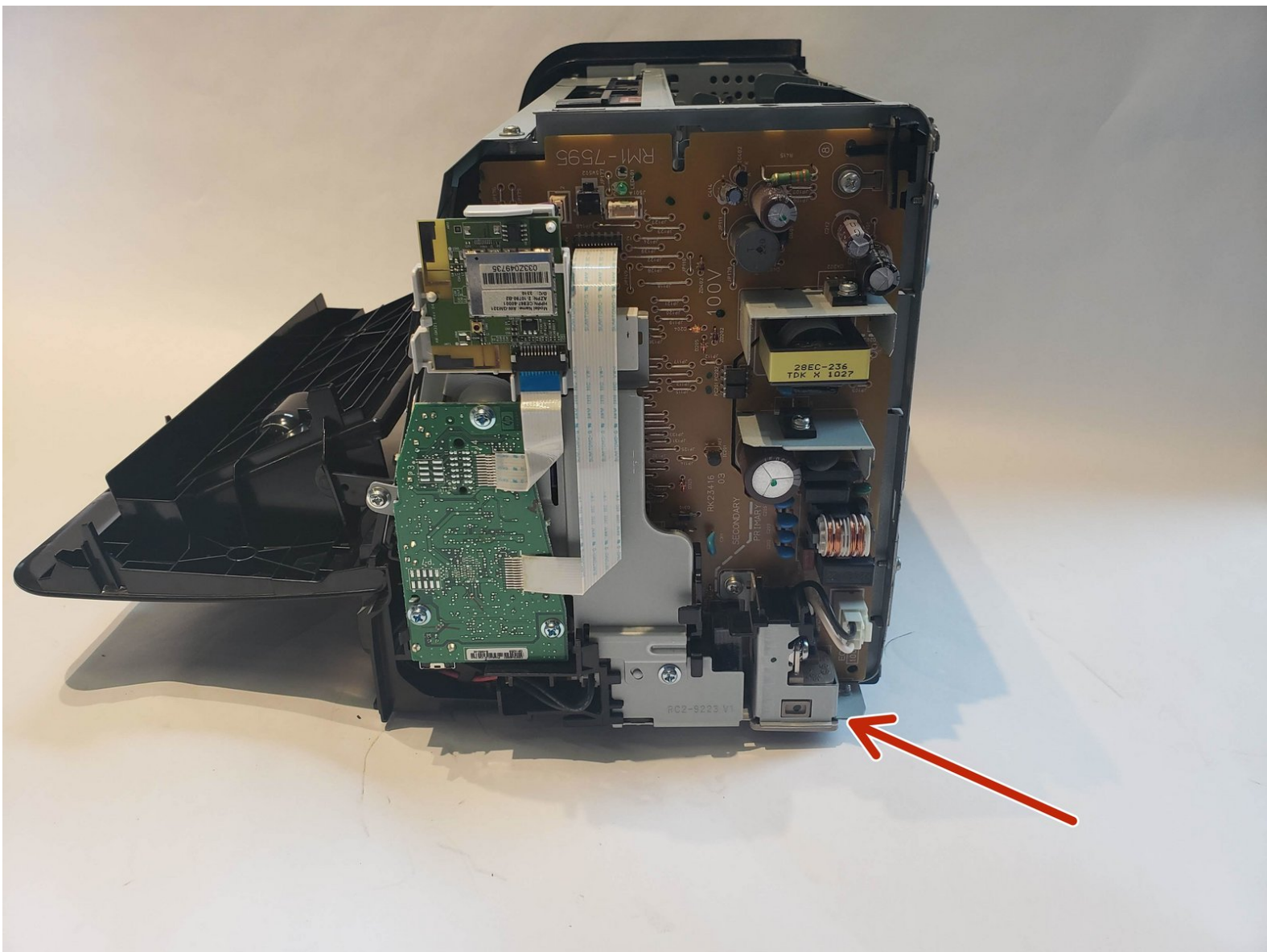




HP LaserJet P1102w Power Plug Replacement

How to remove defective power plug. Either the prongs are bent or there is no power going to the unit.

Written By: Myles Nofsinger



INTRODUCTION

These steps will show how to replace the power plug from the printer. This guide may be used if the prongs of the plug are broken or if a new power supply is needed all together.



TOOLS:

- [Spudger](#) (1)
 - [Phillips #1 Screwdriver](#) (1)
-

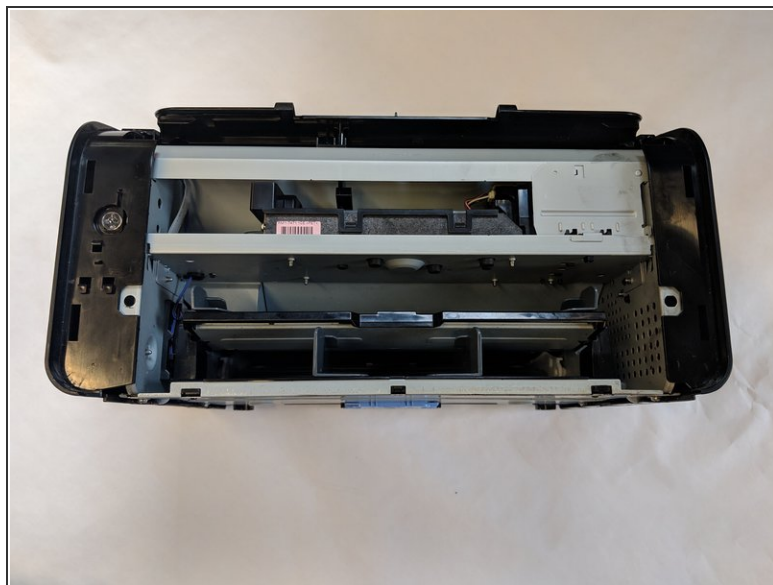
Step 1 — Left Side Panel



- Flip printer on it's back. Using the plastic spudger, pry off front panel. There will be two main points to focus as shown.

⚠ Pry carefully to not break any plastic.

Step 2



- Now that the pry points are free lift up the front panel.

Step 3



- Unscrew the #1 Phillips screw 6mm on the back of the printer.

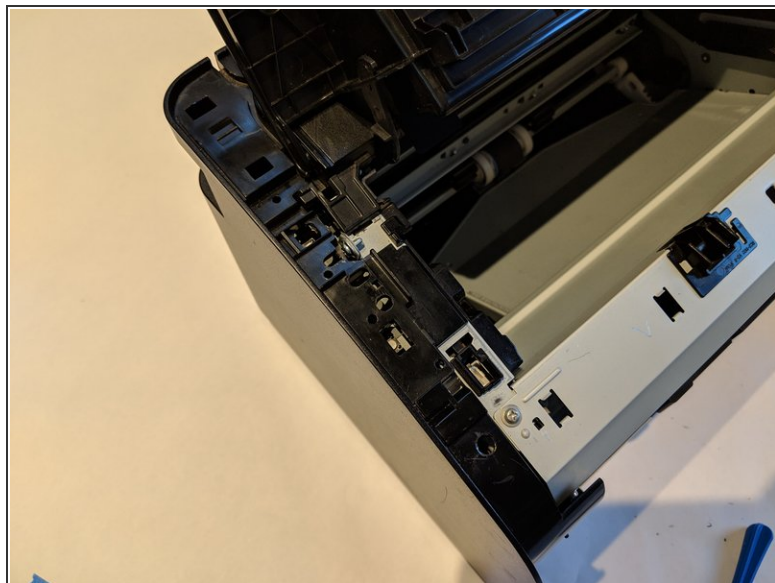
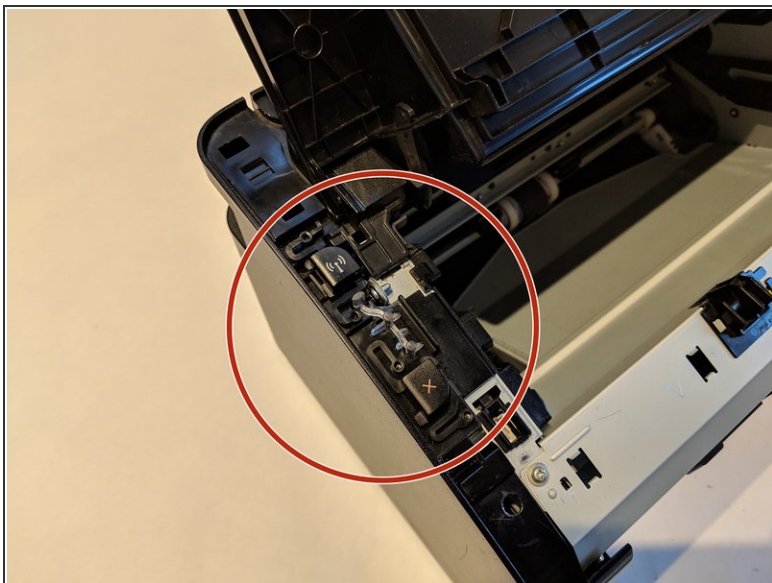
Step 4



- Using the plastic spudger, remove the button housing from the top left of printer.

⚠ Pry carefully to not break any plastic.

Step 5



- Once the housing is removed, remove the three buttons.

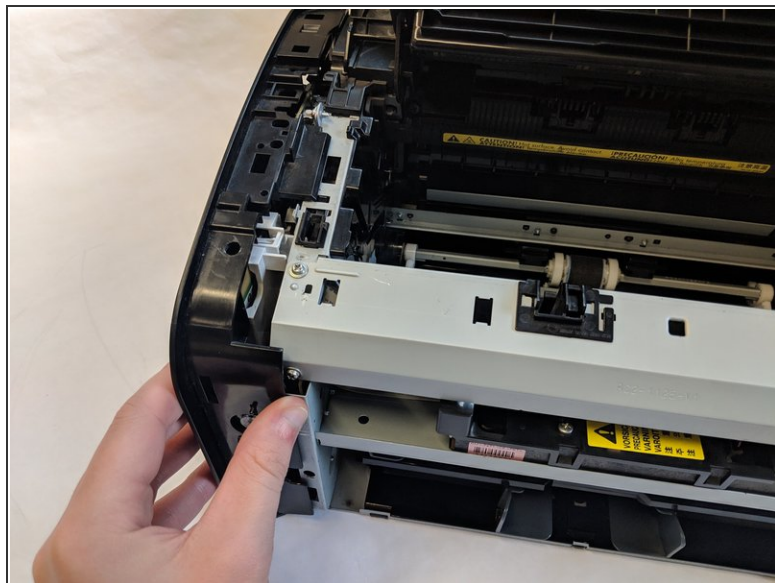
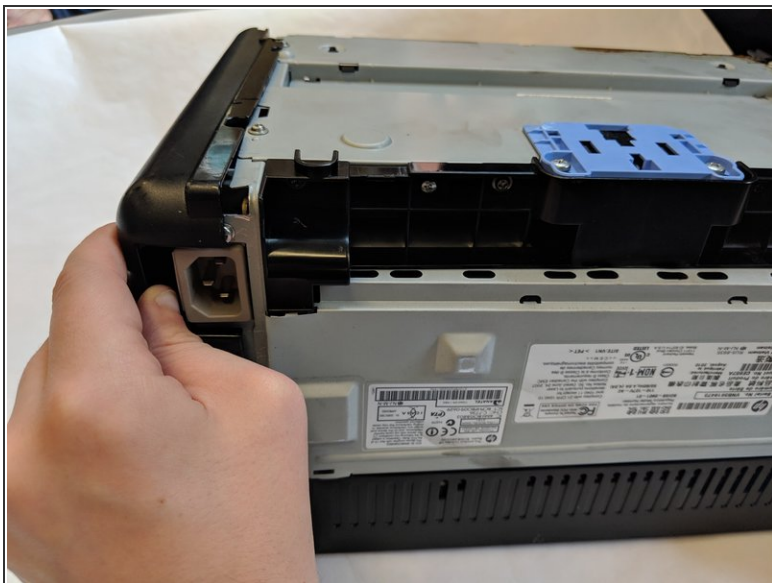
Step 6



- Use the plastic spudger to remove the side panel. There are three main prying points as shown.

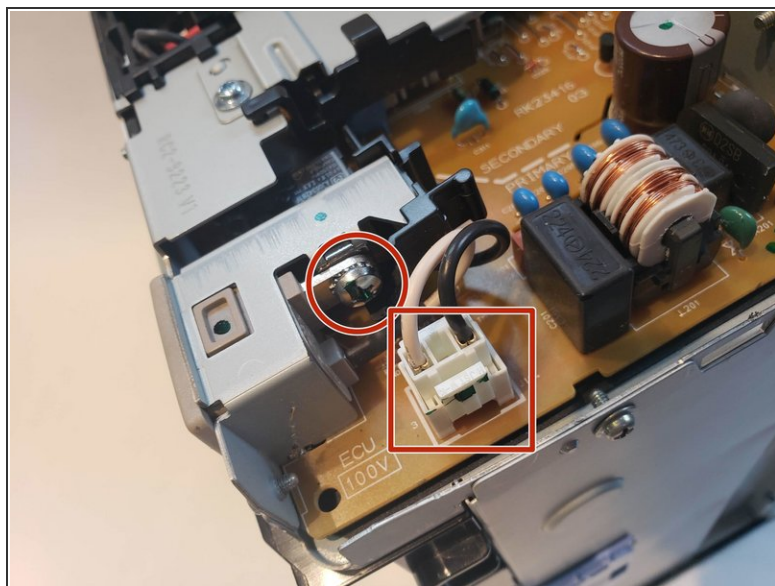
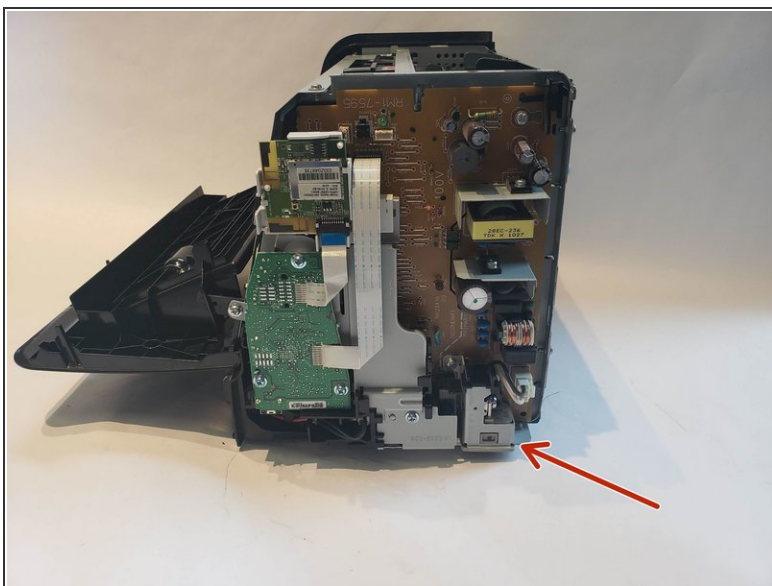
⚠ Pry carefully to not break any plastic.

Step 7



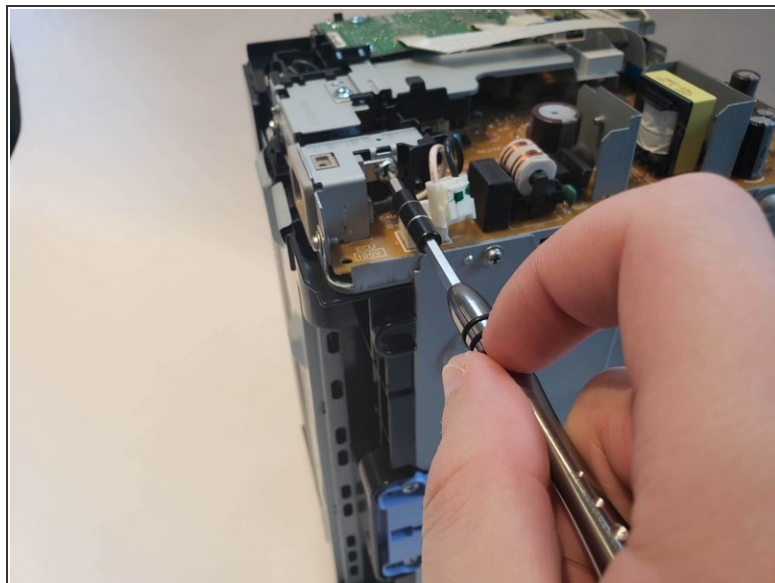
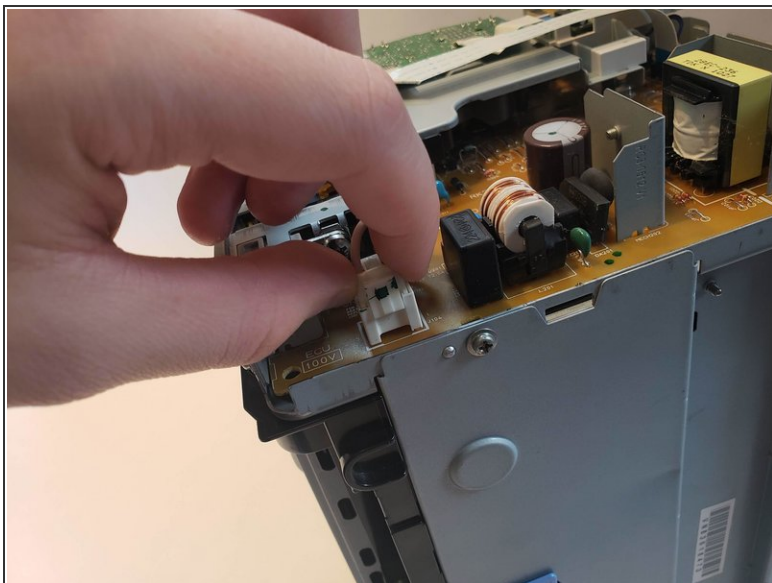
- With all pry points free, remove the side panel.

Step 8 — Power Plug



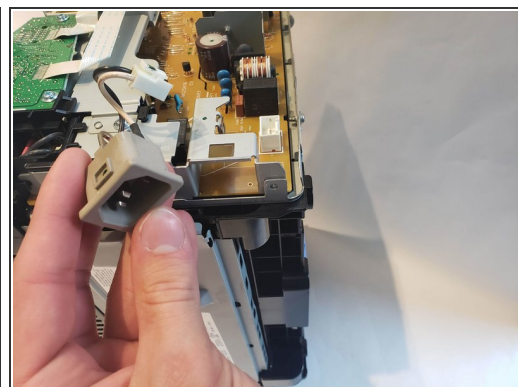
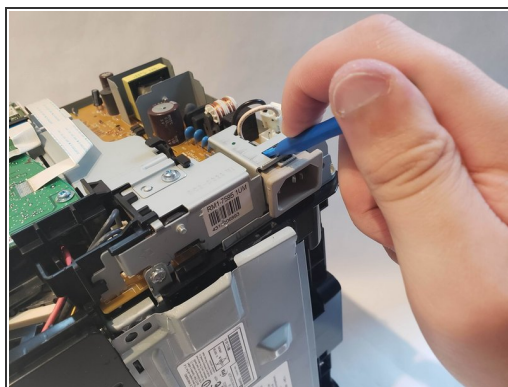
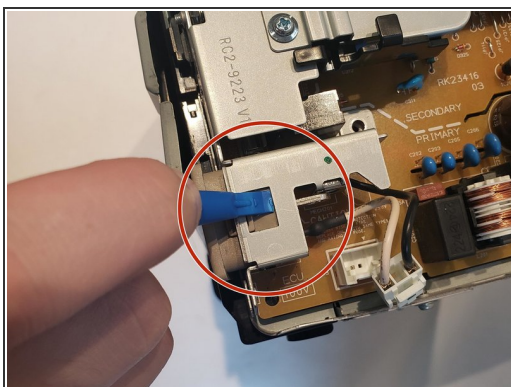
- The power plug will be held together with one Phillips screw 7mm and wire connection.

Step 9



- Unplug wire connector and unscrew the Phillips 7mm screw with #1 Phillips screw driver.

Step 10



- Apply pressure using spudger on top of the power plug to release it from metal housing. While doing that pull the power plug out.

To reassemble your device, follow these instructions in reverse order.