



HP Laserjet Pro 200 Color MFP Wifi Card Replacement

This guide will help replace a broken or malfunctioning wifi card in the HP Laserjet Pro 200.

Written By: Kendall Gentzen



INTRODUCTION

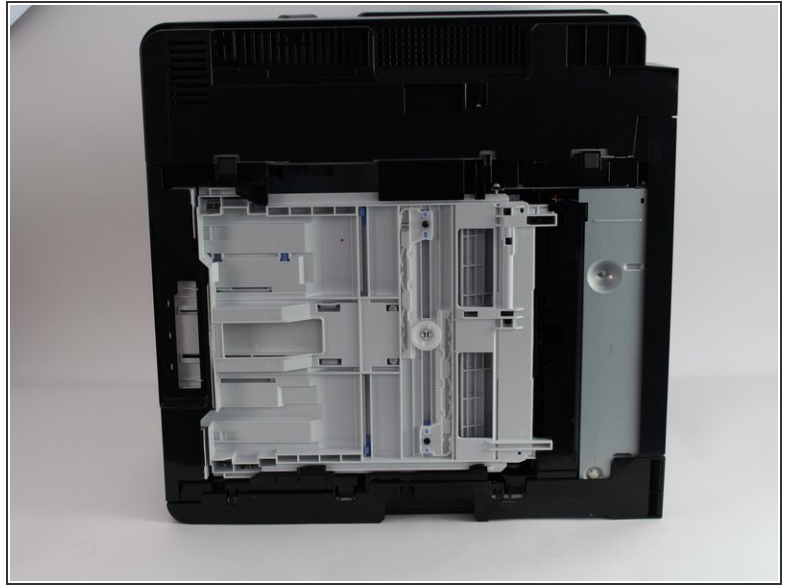
Is your HP Laserjet Pro 200 not connecting to wifi? If so, then there may be an issue with the wifi card. This guide demonstrates how to quickly replace the wifi card inside your printer. All you need is a Phillips #2 Screwdriver and iFixit Opening Tool!



TOOLS:

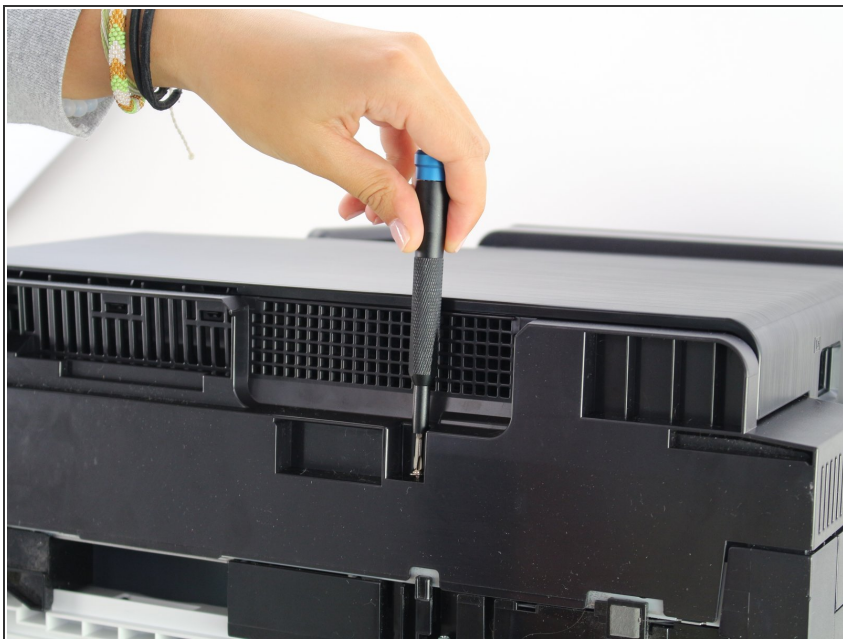
- [Phillips #2 Screwdriver](#) (1)
 - [iFixit Opening Tools](#) (1)
-

Step 1 — Wifi Card



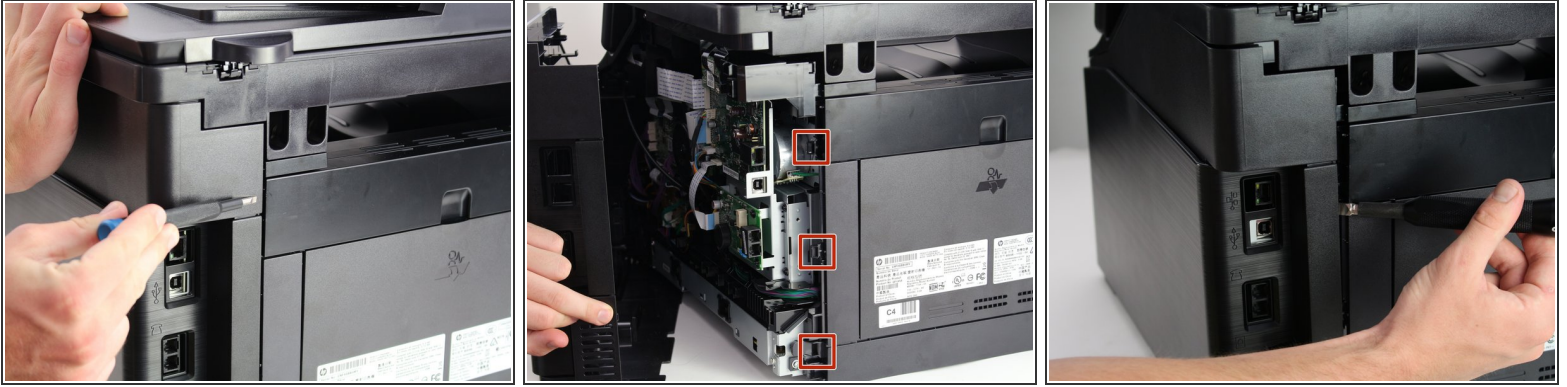
- Turn the printer so that the front is facing to your left.
- Flip the printer so that it is laying with its left side facing down and the bottom facing you.

Step 2



- Use a #2 Phillips head screwdriver to unscrew the 8mm screw on the top edge of the printer.

Step 3



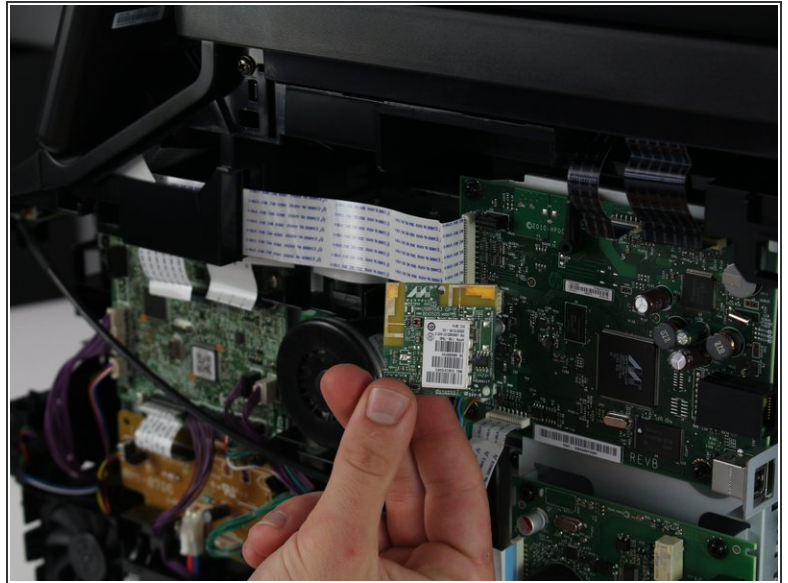
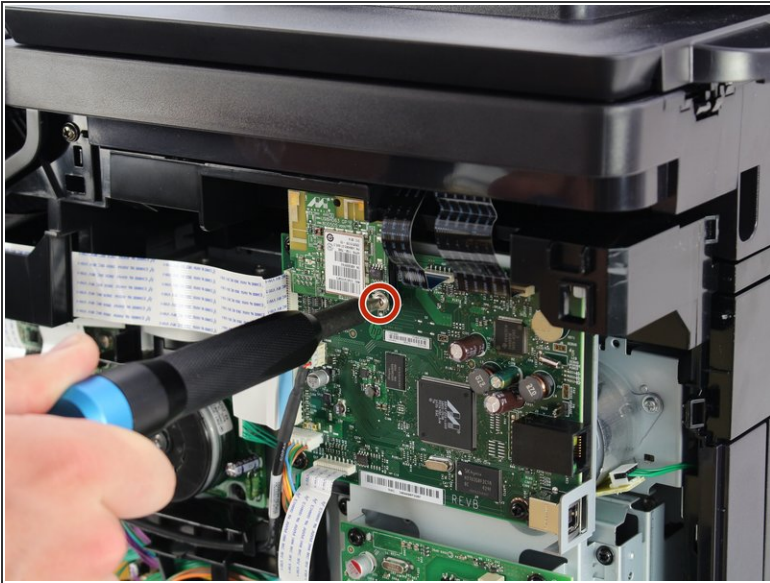
- i** There are three tabs along the back right corner of the printer underneath the panel (location is displayed in the second picture).
- Use a flathead screwdriver to depress the three tabs along the back the tabs while lightly pulling the panel towards you.
 - Begin with the upmost tab and move your way down, individually depressing the tabs.
 - Pull the panel towards you and remove it from the printer.

Step 4



- Turn the printer so that the open side is facing you.

Step 5



- Remove the 6mm Phillips head screw using a Phillips #2 screwdriver to disconnect the WiFi card from the motherboard.

To reassemble your device, follow these instructions in reverse order.