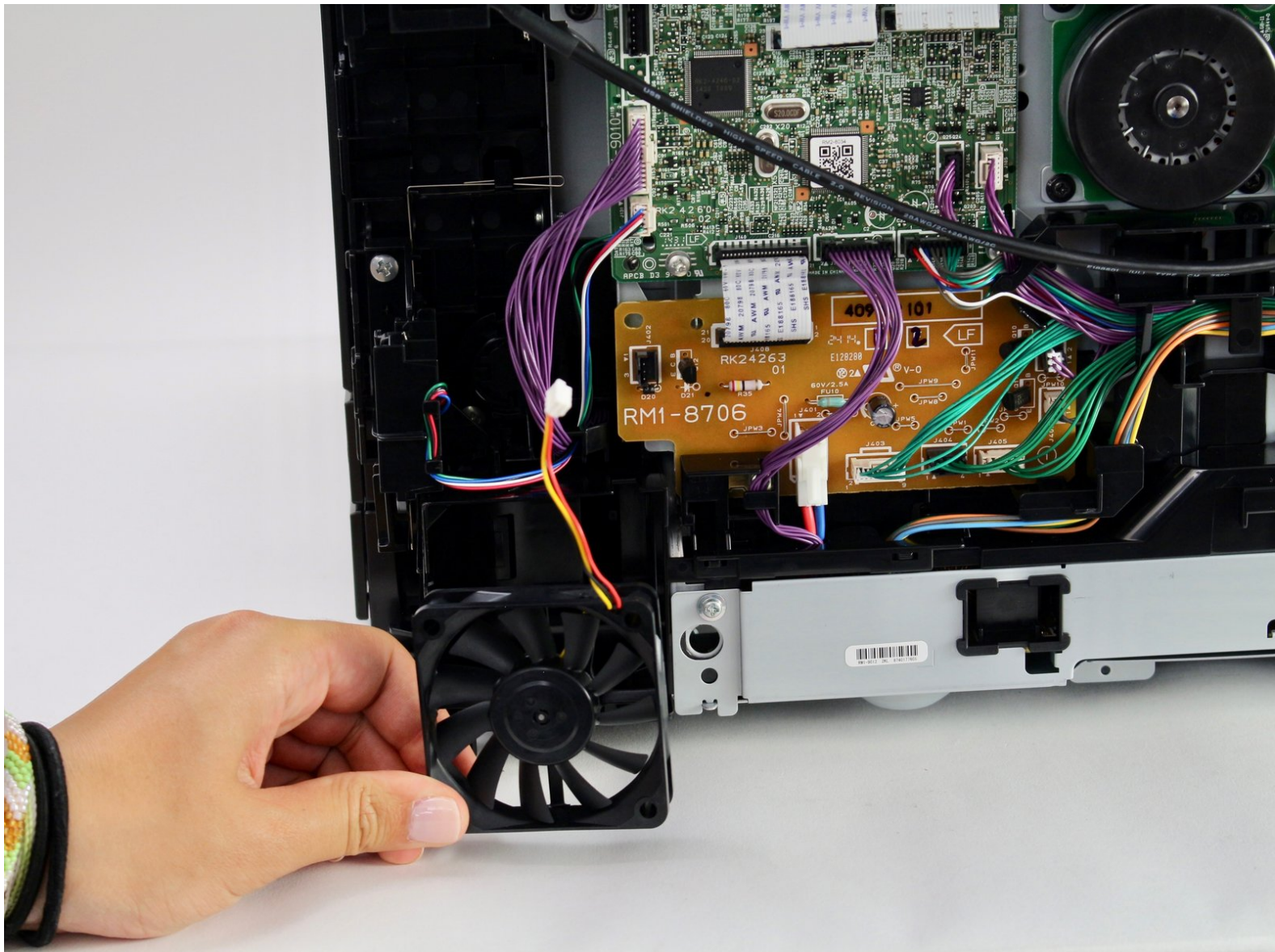




# HP Laserjet Pro 200 Color MFP Fan Replacement

This guide demonstrates how to quickly replace the fan inside the HP Laserjet Pro 200.

Written By: Kendall Gentzen



---

## INTRODUCTION

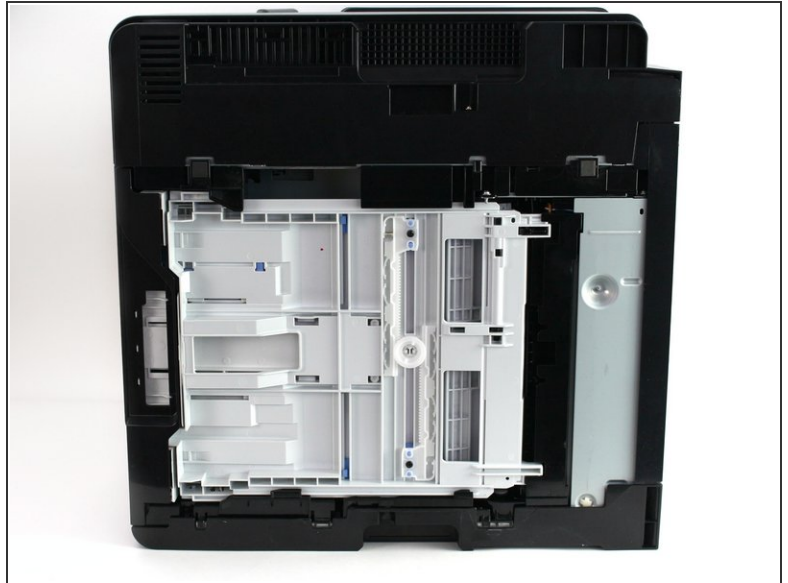
Is your HP Laserjet Pro 200 overheating when printing out important papers? If so, this guide demonstrates how to quickly replace the fan inside your printer. All you need is a Phillips #2 Screwdriver, iFixit Opening Tool, Metal Spudger, and a friend to help you with one of the steps!



### TOOLS:

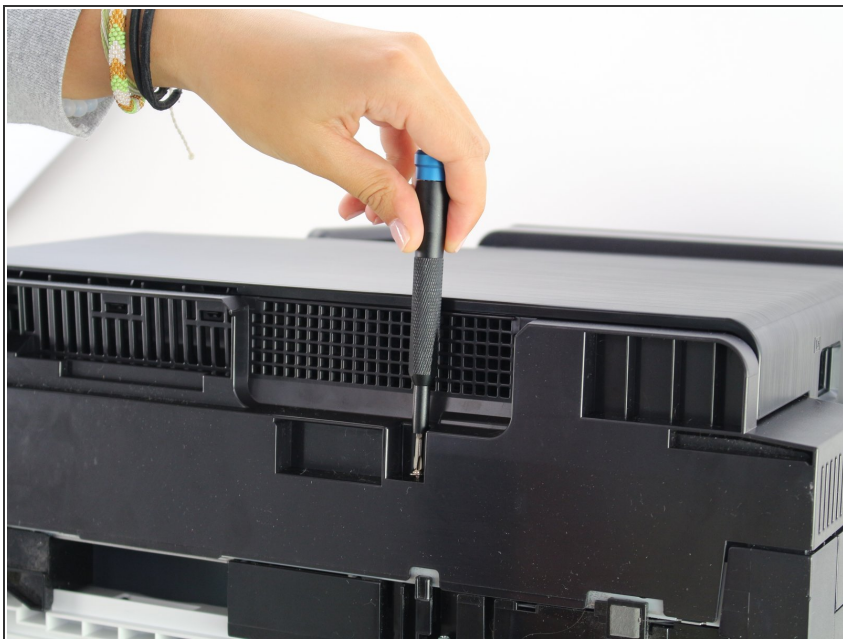
- [iFixit Opening Tools](#) (1)
  - [Phillips #2 Screwdriver](#) (1)
  - [Metal Spudger](#) (1)
-

## Step 1 — Fan



- Turn the printer so that the front is facing to your left.
- Flip the printer so that it is laying with its right side facing down and the bottom facing you.

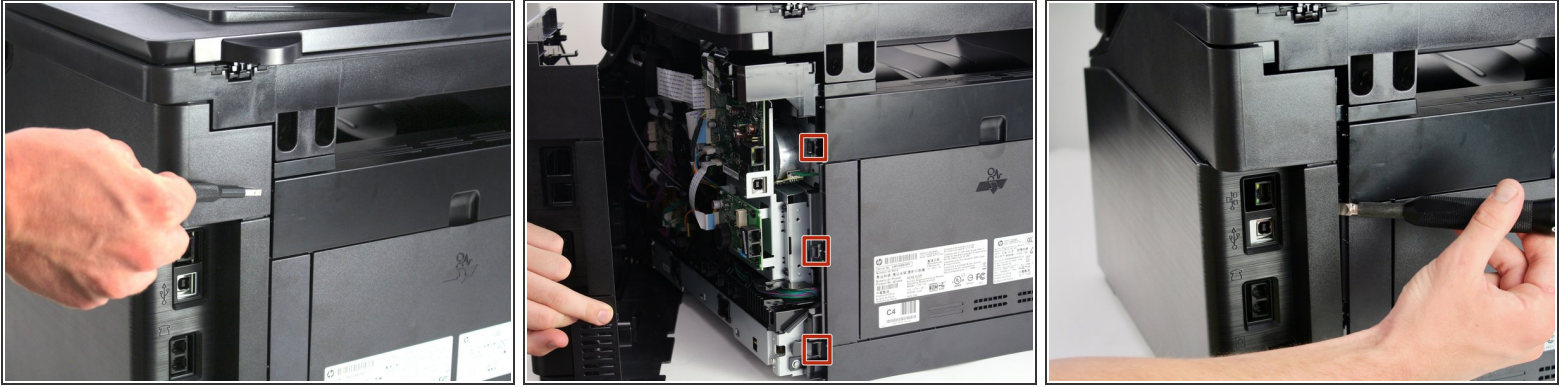
## Step 2



- Remove the 8 mm screw on the top edge of the printer using a #2 Phillips head screwdriver.



### Step 3



- i** There are three tabs along the back right corner of the printer underneath the panel shown (location is displayed in second picture).
- Use a flathead screwdriver to depress these tabs while lightly pulling the panel towards you.
  - Begin with the upmost tab and move your way down, individually depressing the tabs while simultaneously pulling the panel towards you, removing it from the printer.

### Step 4



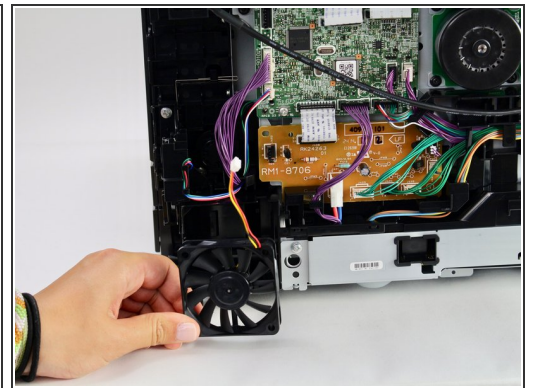
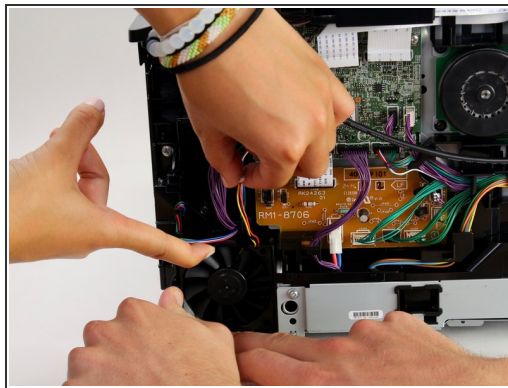
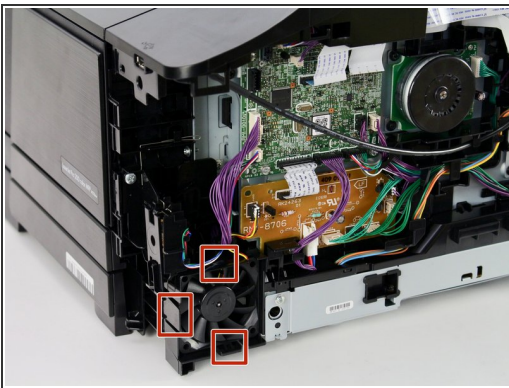
- Rotate the printer so you are facing the open side.

## Step 5



- Gently pull out the plug that supplies power to the fan from the socket on the circuit board.
- ⚠ Be careful when removing the plug as the components are fragile.

## Step 6



- ⓘ There are three tabs that hold the fan in place, as shown in the first picture. These steps may require an extra pair of hands in order to depress all the tabs.
- Push each tab outwards from the fan.
- Simultaneously pull the fan towards you until the fan clears the face of the printer.

To reassemble your device, follow the instructions in reverse order.