



HP Laserjet Pro 200 Color MFP Power Button Replacement

This guide will show how to replace the power button for the HP Laserjet Pro 200.

Written By: Kendall Gentzen



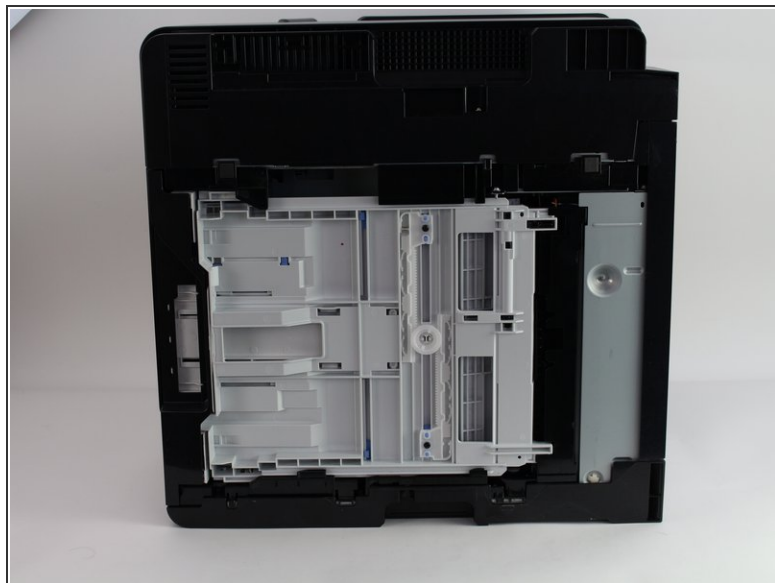
INTRODUCTION

Is your HP Laserjet Pro 200 not turning on? Then there may be an issue with the power button. This guide demonstrates how to quickly replace the power button inside your printer. All you need is a Phillips #2 Screwdriver, iFixit Opening Tool, and Metal Spudger!

TOOLS:

- [Phillips #2 Screwdriver](#) (1)
 - [iFixit Opening Tools](#) (1)
 - [Metal Spudger](#) (1)
-

Step 1 — Power Button



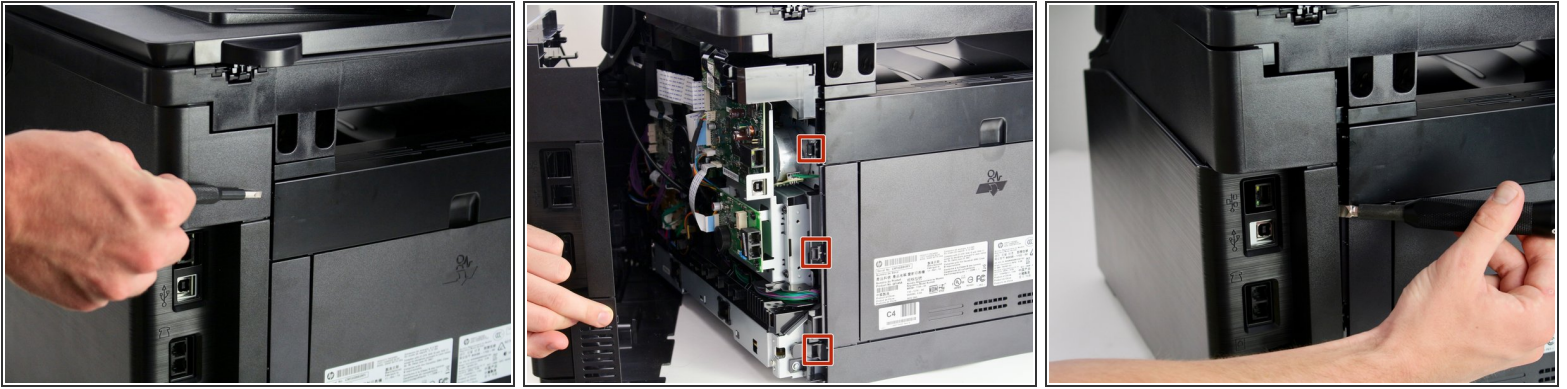
- Turn the printer so that the front is facing to your left.
- Flip the printer so that it is laying with its left side facing down and the bottom facing you.

Step 2



- Use a #2 Phillips head screwdriver to unscrew the 8mm screw on the top edge of the printer.

Step 3



i There are three tabs along the back right corner of the printer underneath the panel (location is displayed in the second picture).

- Use a flathead screwdriver to depress the tabs while lightly pulling the panel towards you.
- Begin with the upmost tab and move your way down, individually depressing the tabs.
- Pull the panel towards you and remove it from the printer.

Step 4



- Turn the printer so that you are facing the open side with the power button chord.
- Carefully remove this cord.

Step 5



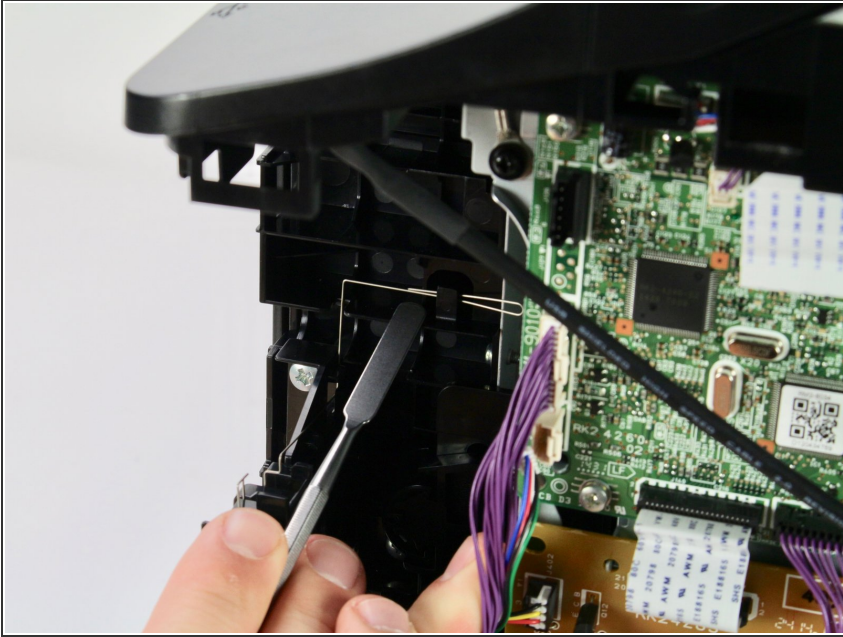
- There is a cover that protects the electronics within the power button.
- Remove it by pinching the two tabs on the cover.
- Pull it outward from the printer.

Step 6



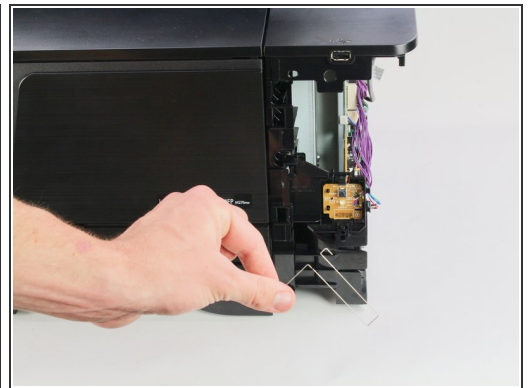
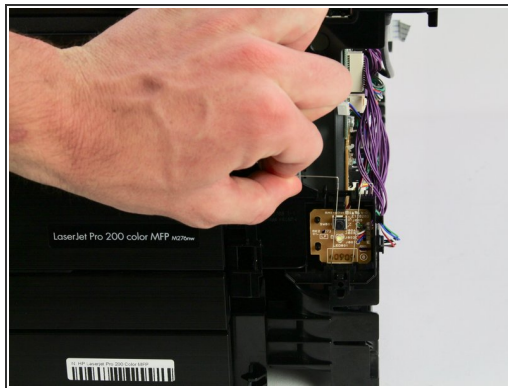
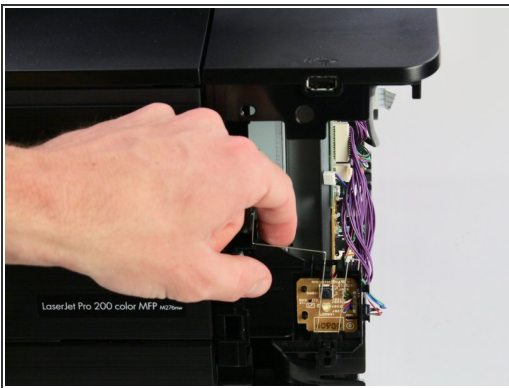
- ❗ A tension spring in the form of a bent wire is used to hold the assembly in the printer.
- In order to remove the spring completely, begin by removing the right end of the wire from its slot above the power button with a metal spudger.

Step 7



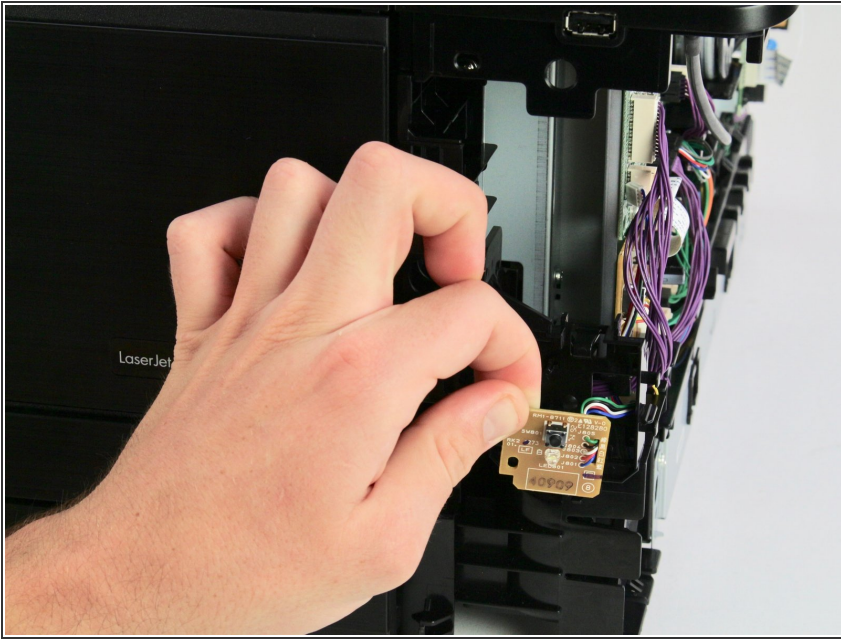
- Unclip the left side of the wire from printer by applying upwards pressure along the edge of the wire.
- ⓘ This step can be done with either your fingers or a prying tool of your choosing.

Step 8



- Grab the wire and hold it firmly with two fingers.
- Pull it directly upwards.
- Wiggle it until it is fully removed from the printer.

Step 9



- Pull the power button board directly towards you, until both the board and the wire are fully clear of the printer.

To reassemble your device, follow the instructions in reverse order.