



HP Media Center 876x CMOS Battery Replacement

This guide will show you how to replace the CMOS battery.

Written By: Balakrishnan Pillai



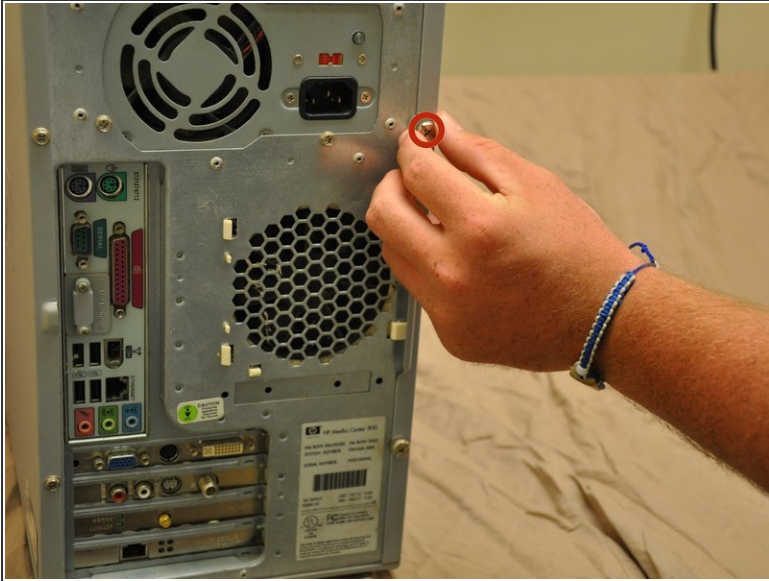
INTRODUCTION

The CMOS battery is the source of the initial power used in turning the computer on. If your HP Media Center 876x will not turn on, the CMOS battery may need replacement.

TOOLS:

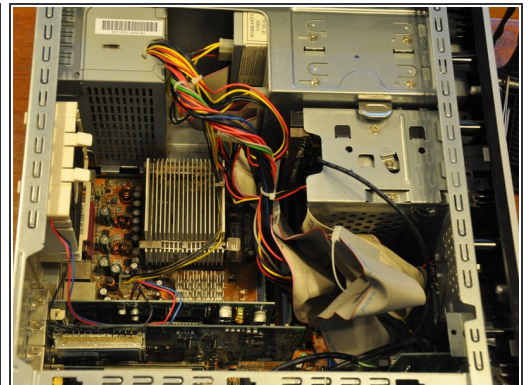
- [Phillips #1 Screwdriver](#) (1)
-

Step 1 — Side Panel



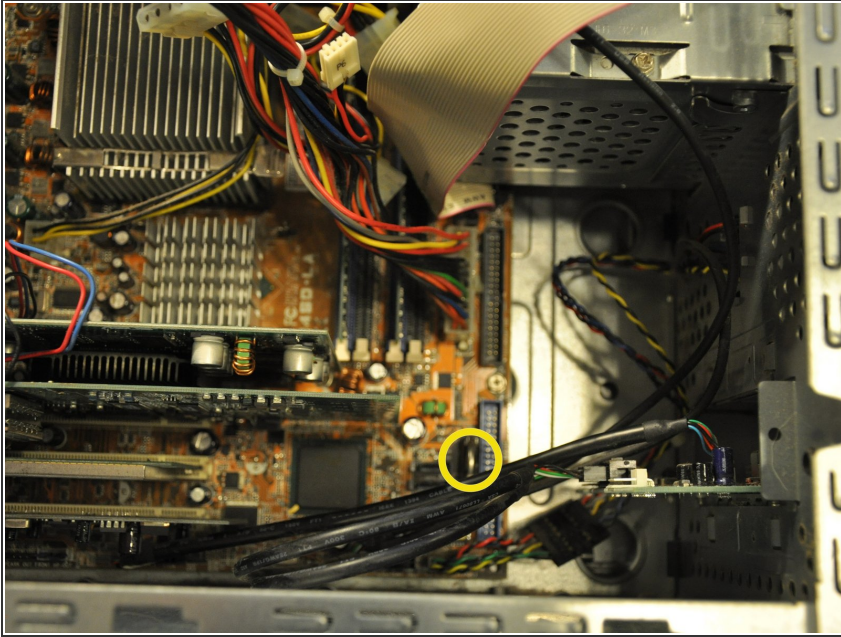
- Remove the two (9 mm) hand screws on the back panel.

Step 2



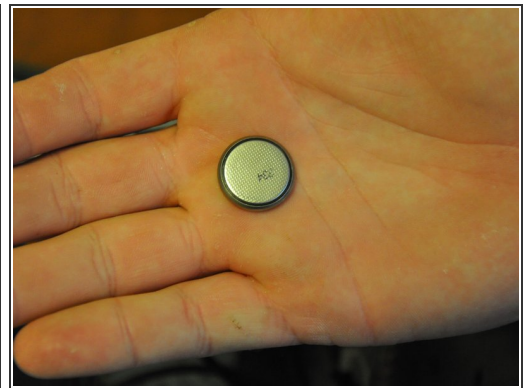
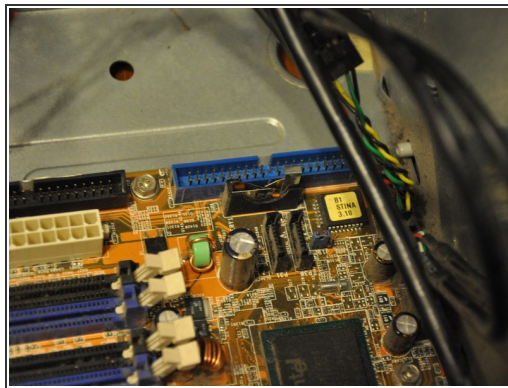
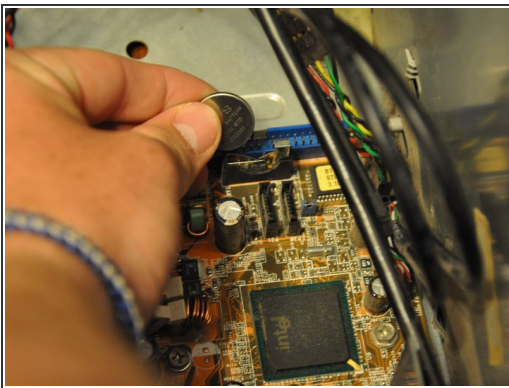
- Place the tower on its side.
- Slide the side panel horizontally to detach, and pull upward to remove.

Step 3 — CMOS Battery



- Identify the CMOS battery.

Step 4



- Pull battery, in a rolling motion, out of its slot.

To reassemble your device, follow these instructions in reverse order.