



HP Media Center 876x Optical Drive Replacement

This guide will show you how to remove the optical drives from the tower console of the HP Media Center 876x.

Written By: Balakrishnan Pillai



This document was generated on 2019-09-18 06:59:54 AM (MST).

INTRODUCTION

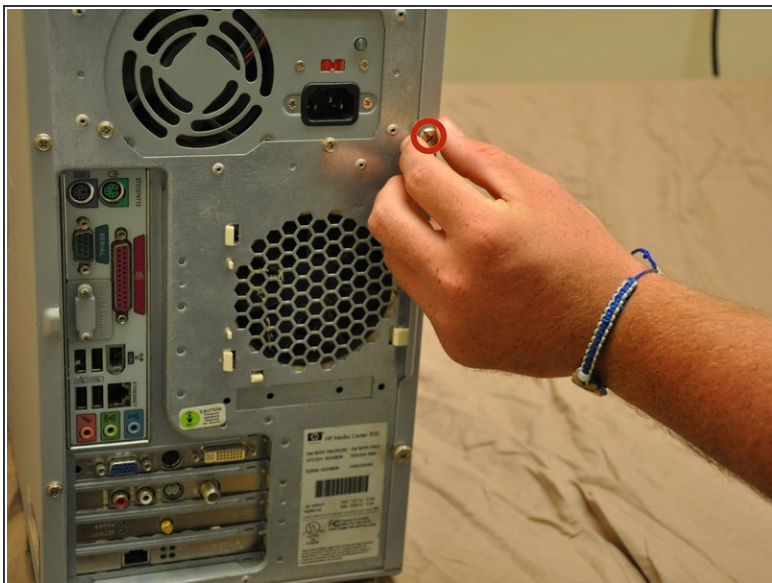
The optical drive (also known the CD drive) is one of the most frequently used parts of the HP Media Center 876x. As a result, damages are common and often replacement is necessary.



TOOLS:

- [Phillips #0 Screwdriver](#) (1)
-

Step 1 — Side Panel



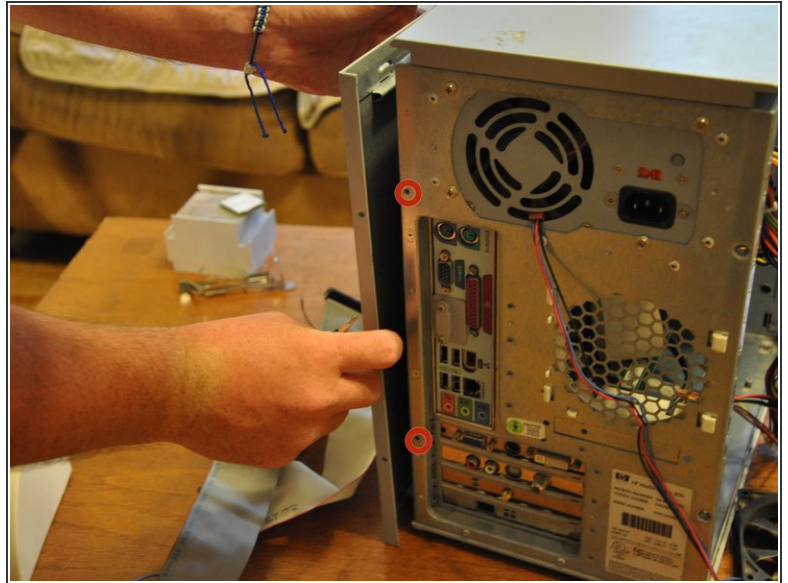
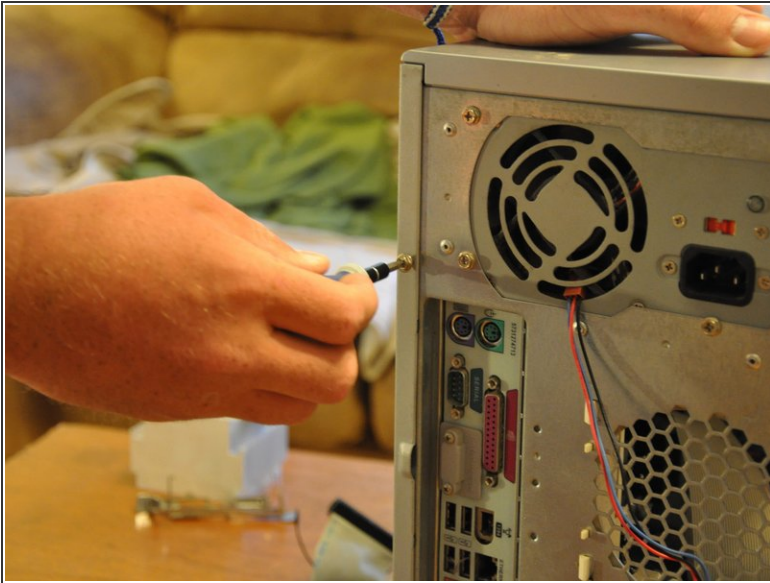
- Remove the two (9 mm) hand screws on the back panel.

Step 2



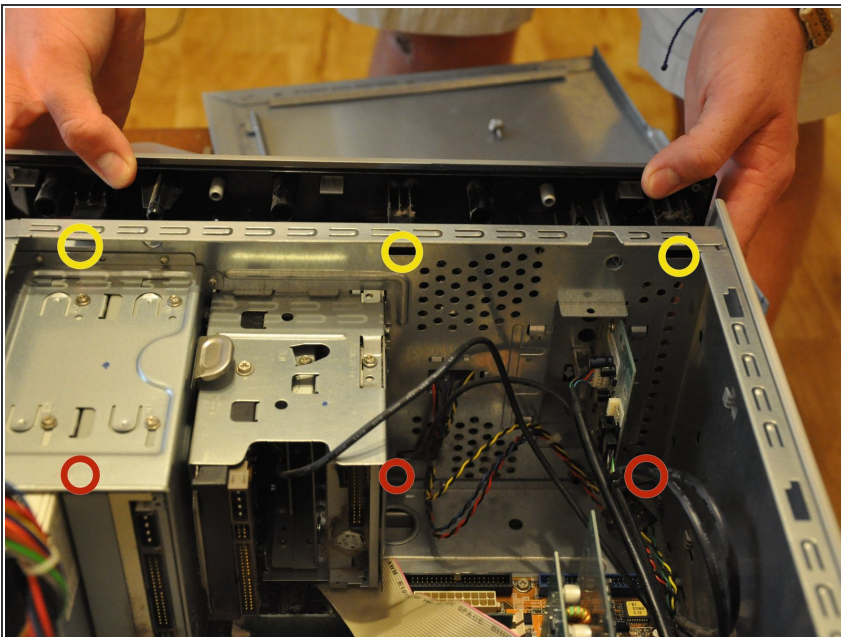
- Place the tower on its side.
- Slide the side panel horizontally to detach, and pull upward to remove.

Step 3 — Front Cover



- Orient the tower vertically.
- Using the #0 Phillips head screwdriver, unscrew and remove the two (5 mm) screws that fasten the remaining side panel to the tower.
- Slide the side panel out of its notches, and pull it gently off of the tower.

Step 4



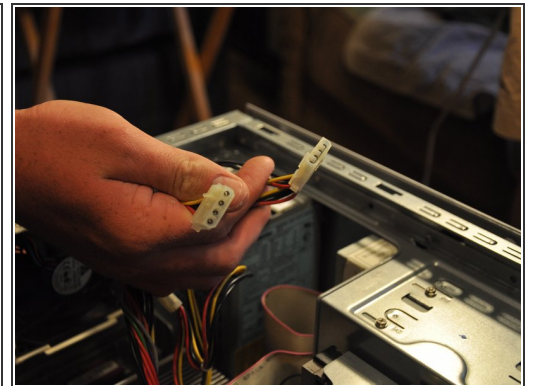
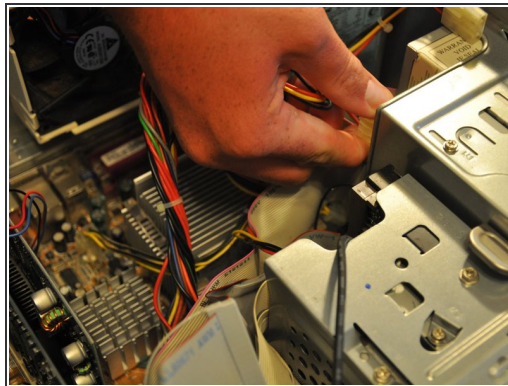
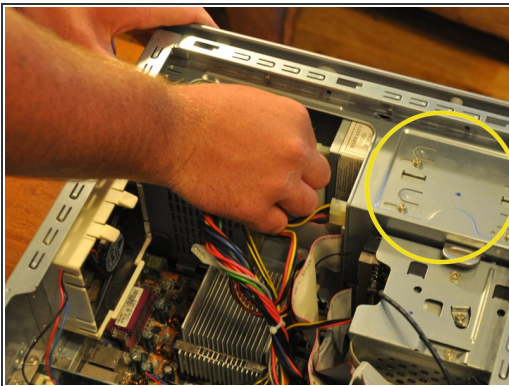
- Gently move the tower so that it is in the horizontal orientation.
- Press down the black tabs (proximal to you) that fasten the front panel to the tower.
- Press down on the distal, black tabs (symmetric with respect to the previous tabs).
- Pull front panel forward slightly.

Step 5



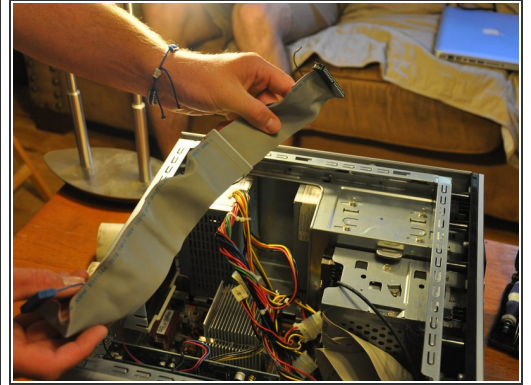
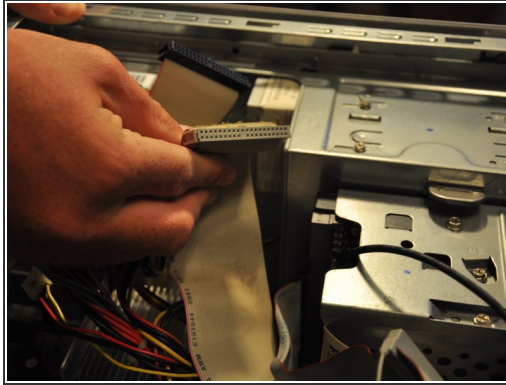
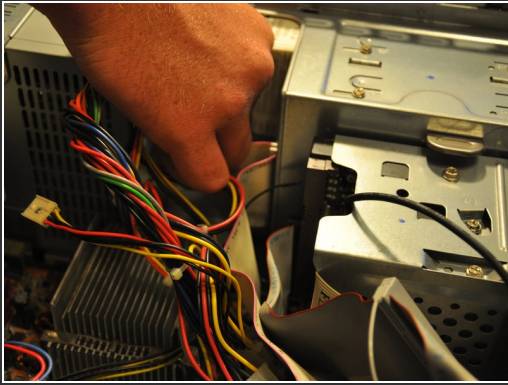
- Orient the tower vertically.
- The front panel will come off in a hinge-like fashion, exposing the drives underneath.

Step 6 — Optical Drive



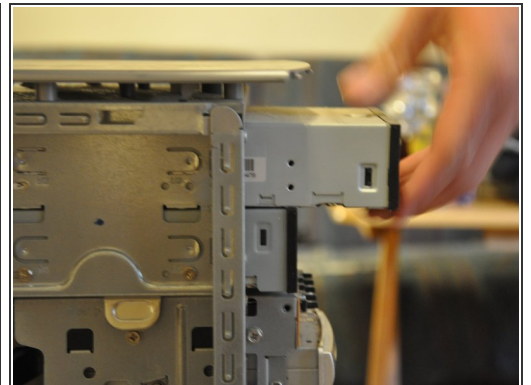
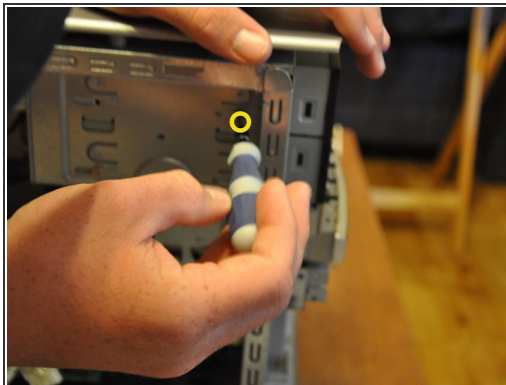
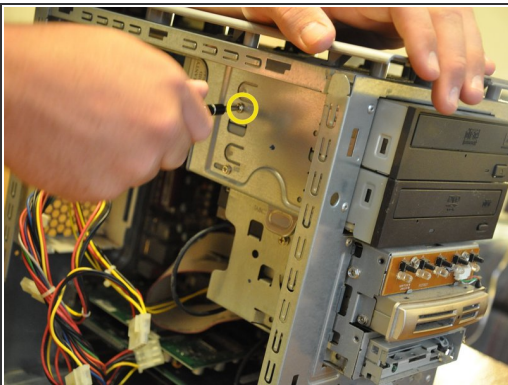
- Identify the optical drive.
- Pull the molex connectors out of the posterior end of the optical drive.

Step 7



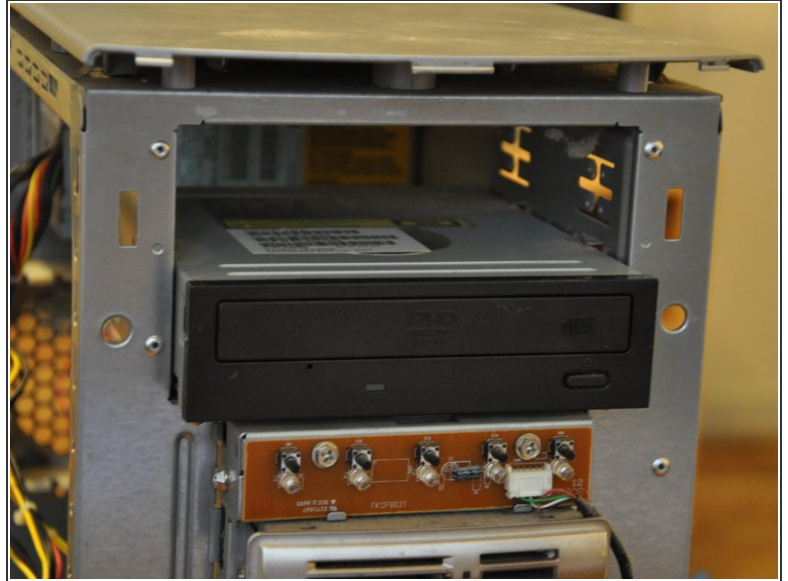
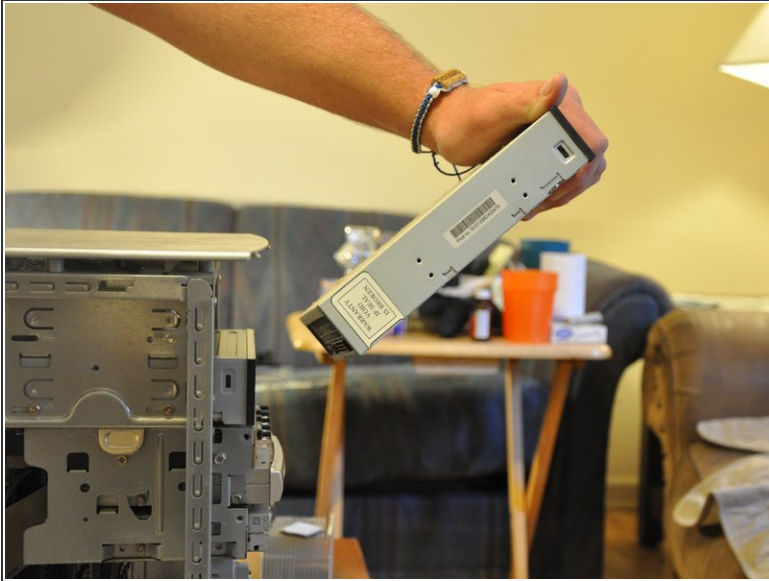
- Pull the "ribbon cable" out of the posterior end of the optical drive.

Step 8



- Using the #0 Phillips head screwdriver, unscrew the two (5 mm) screws that fasten the optical drive into its port.
- Gently pull the optical drive through the frontal cavity.

Step 9



- Remove the optical drive completely from its port.

To reassemble your device, follow these instructions in reverse order.