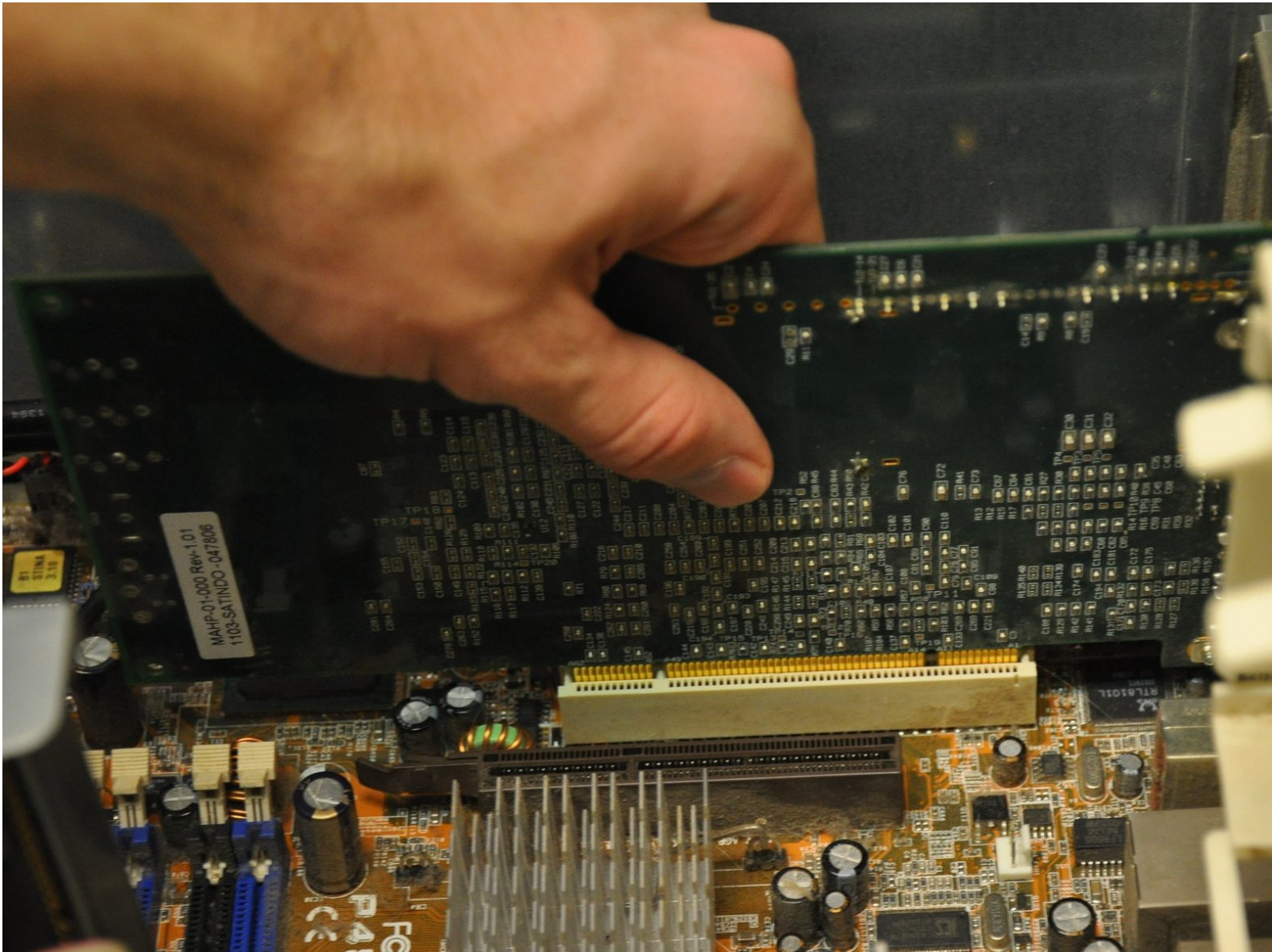




HP Media Center 876x TV Tuner Card Replacement

This guide will show you how to remove the TV tuner card on the HP Media Center 876x.

Written By: Balakrishnan Pillai



INTRODUCTION

The HP Media Center 876x is capable of receiving television service through its TV tuner card. If you are unable to receive proper service, the TV tuner card may require replacement.



TOOLS:

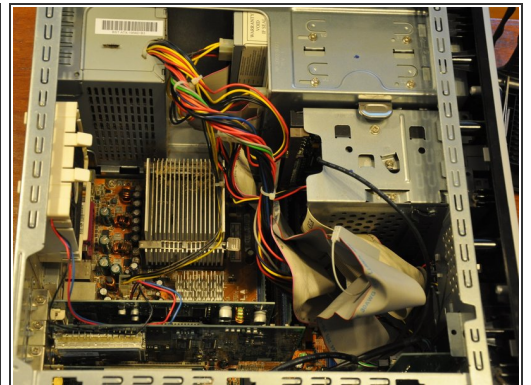
- [Phillips #0 Screwdriver](#) (1)
-

Step 1 — Side Panel



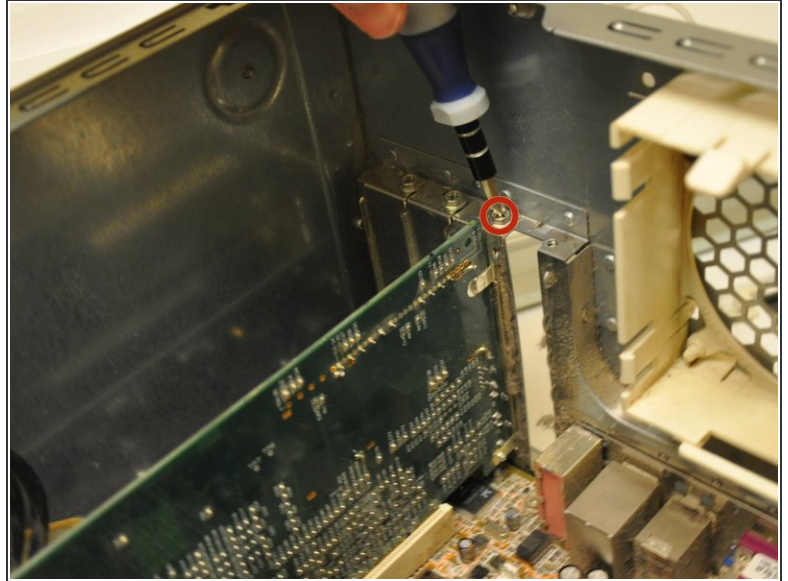
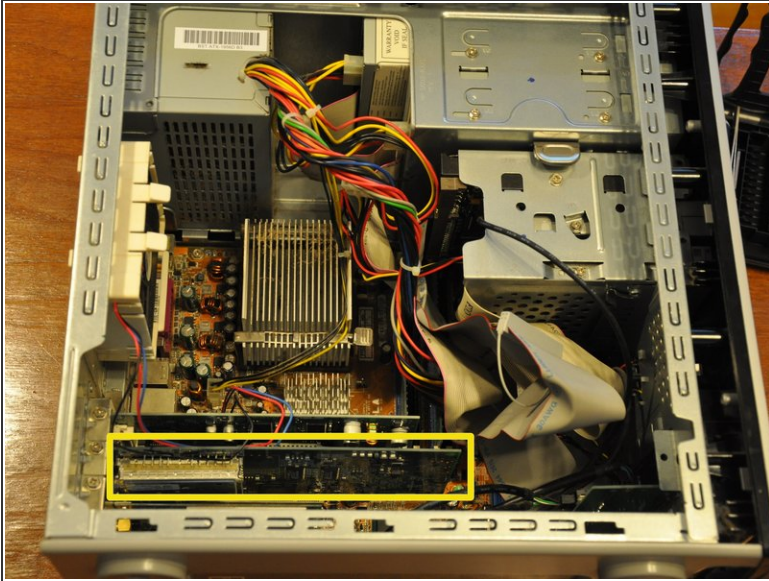
- Remove the two (9 mm) hand screws on the back panel.

Step 2



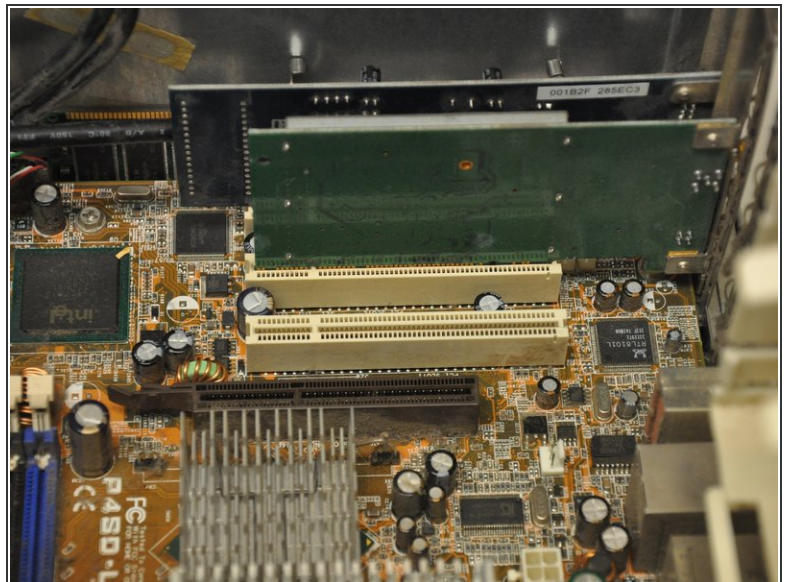
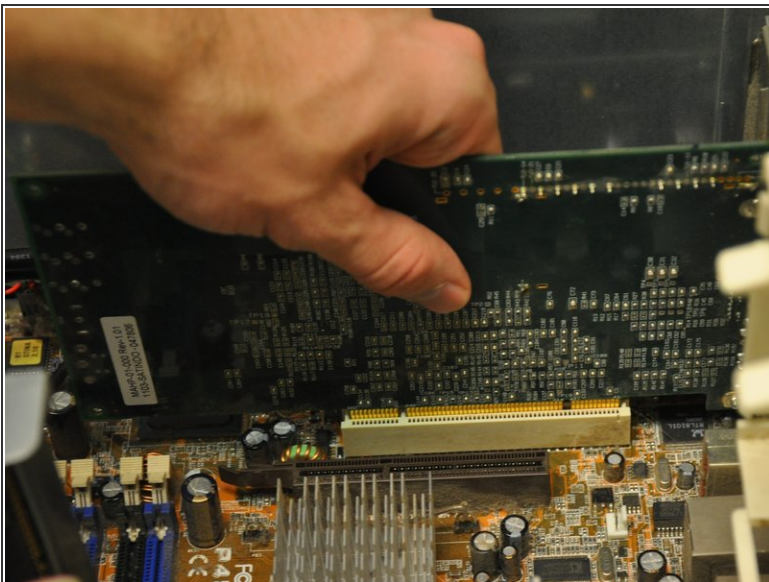
- Place the tower on its side.
- Slide the side panel horizontally to detach, and pull upward to remove.

Step 3 — TV Tuner Card



- Identify the TV tuner card (distal from the cooling fan, in the lower-left corner of the tower).
- Using a #0 Phillips head screwdriver, remove the one (6 mm) screw fastening the TV tuner card into its slot.

Step 4



- Gently pull the card vertically out of its port.

To reassemble your device, follow these instructions in reverse order.