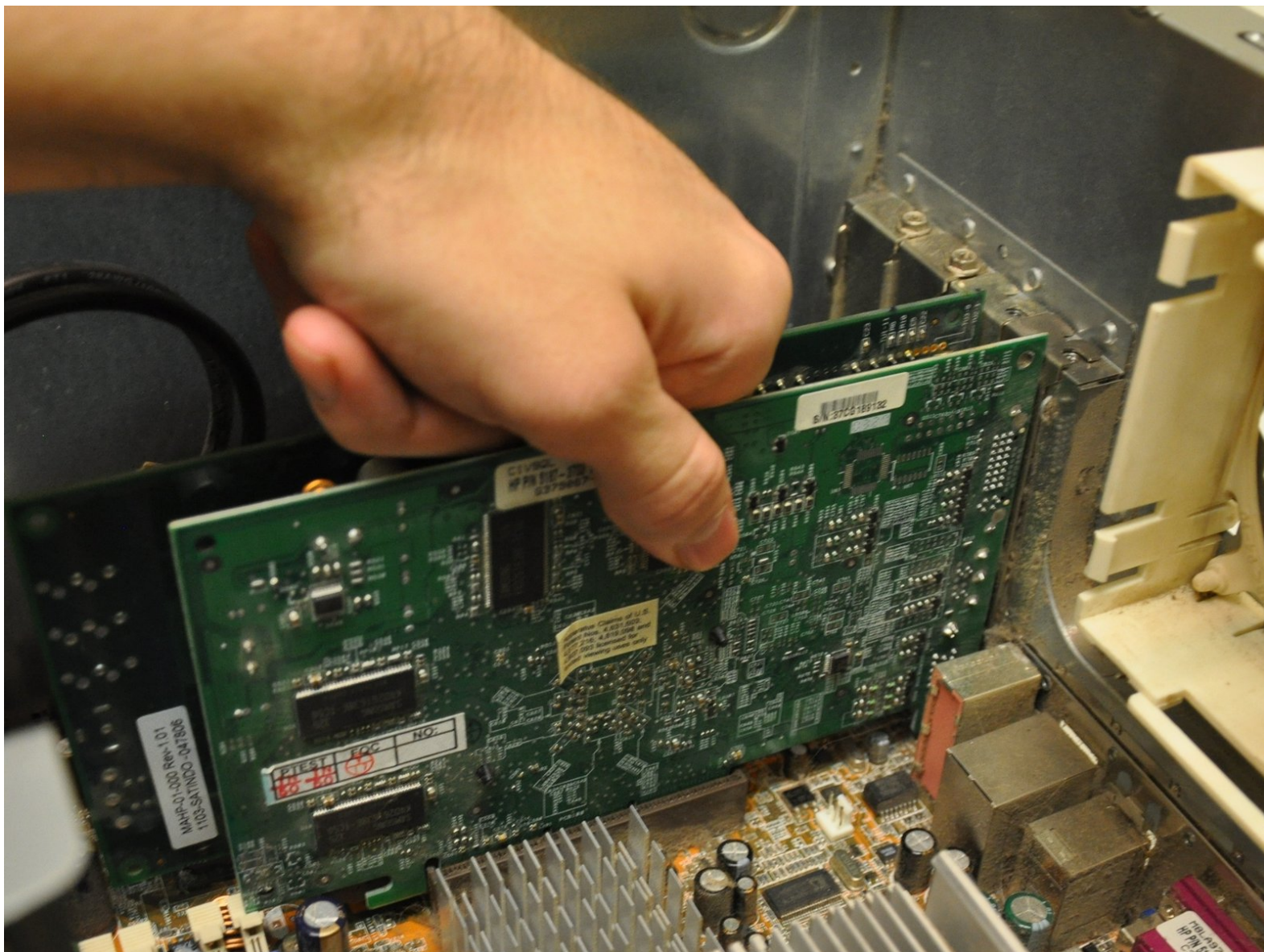




HP Media Center 876x Video Card Replacement

This guide will show you how to remove the internal video card.

Written By: Balakrishnan Pillai



INTRODUCTION

The video card is instrumental in the visualization of data by the HP Media Center 876x system. If the images on screen are distorted, of bad quality, or will not appear at all, the video card may require replacement.

TOOLS:

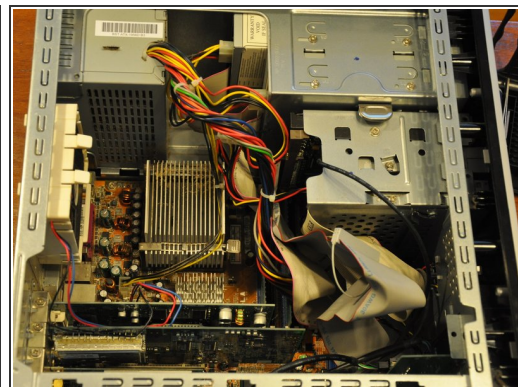
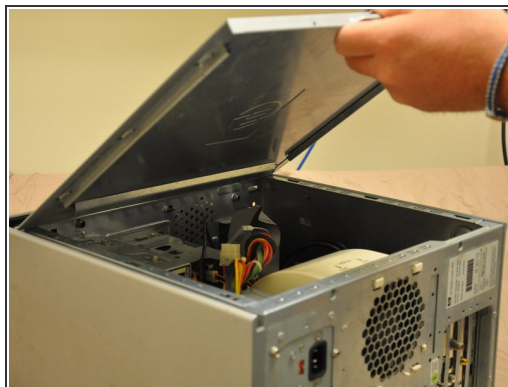
- [Phillips #0 Screwdriver](#) (1)
-

Step 1 — Side Panel



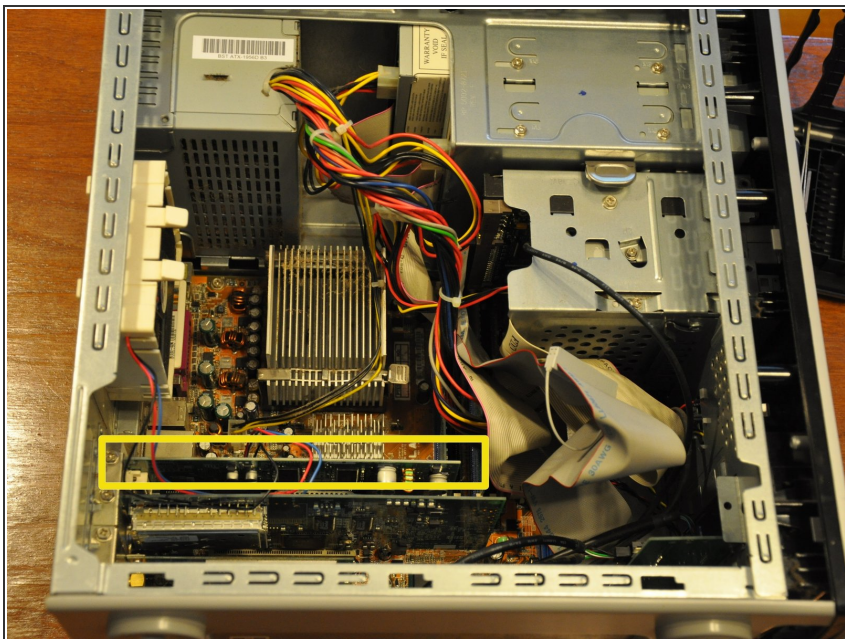
- Remove the two (9 mm) hand screws on the back panel.

Step 2



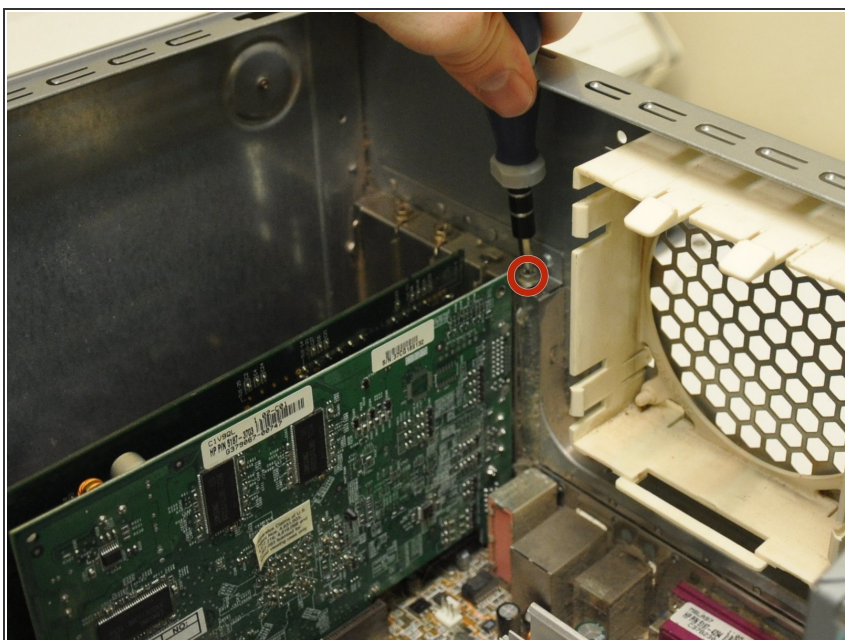
- Place the tower on its side.
- Slide the side panel horizontally to detach, and pull upward to remove.

Step 3 — Video Card



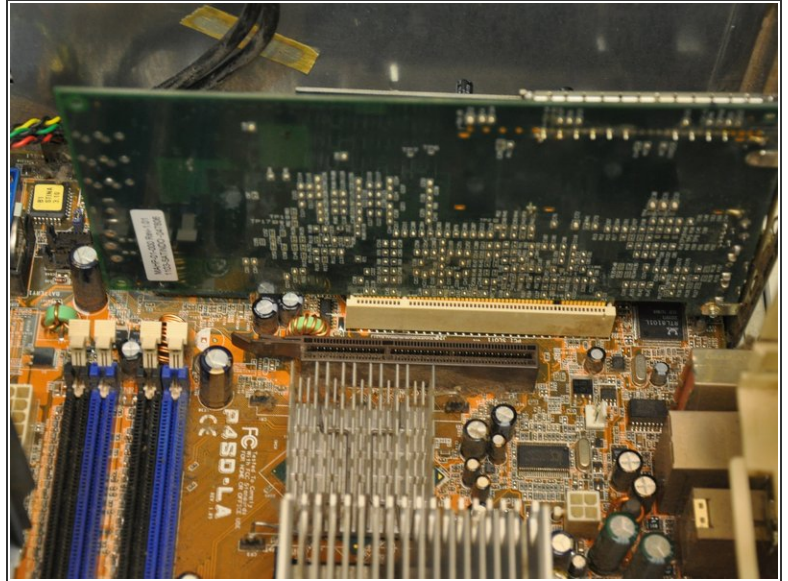
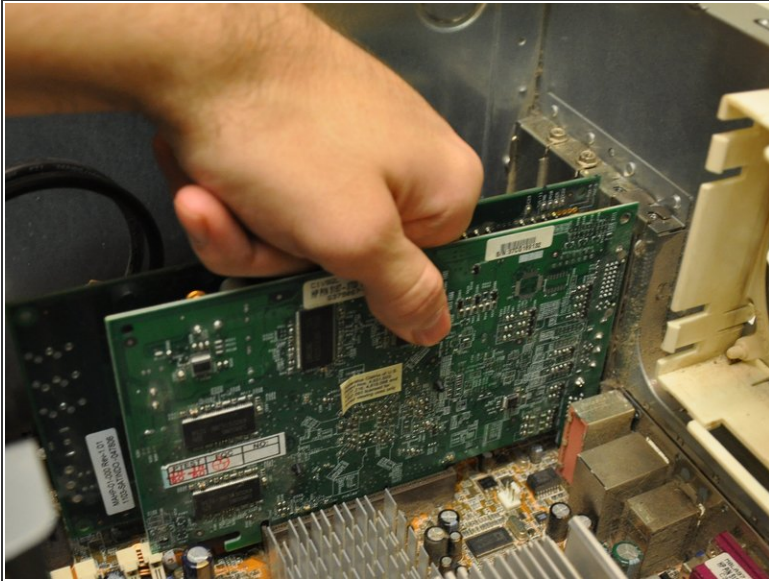
- Identify the video card (the green card nearest to the fan casing in the bottom left hand corner of the tower).

Step 4



- Using a #0 Phillips head screwdriver, remove the one (6 mm) screw fastening the video card to its mount.

Step 5



- Pull the video card vertically out of its port.

To reassemble your device, follow these instructions in reverse order.