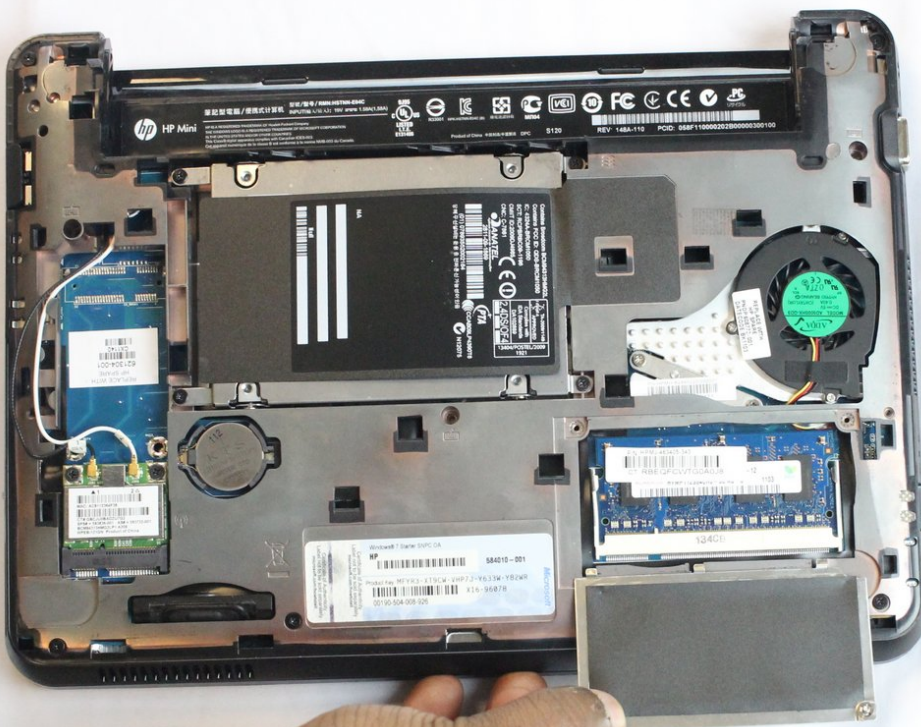




HP Mini 110-3131dx Memory Card Replacement

Replace your memory card to increase the storage and speed of your HP Mini 110-3131dx.

Written By: aarondcollege



INTRODUCTION

This is a step by step guide to help you replace the memory card for the HP Mini 110-3131dx in order to increase the laptop's performance.



TOOLS:

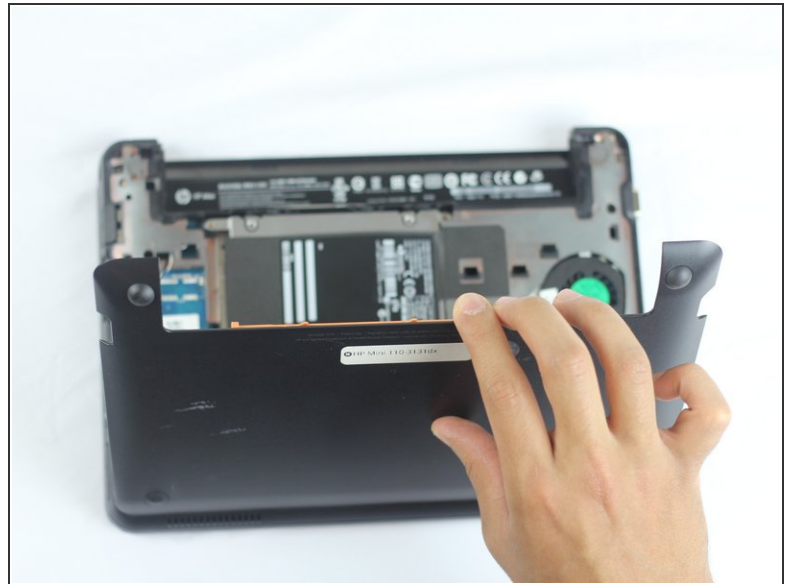
- [Phillips #1 Screwdriver](#) (1)
-

Step 1 — Battery



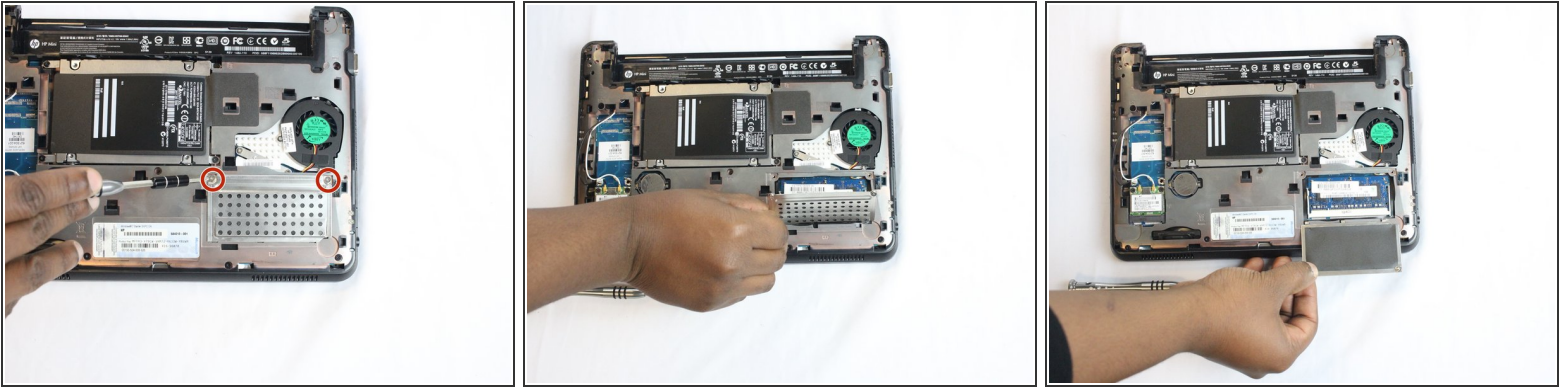
- Completely turn off the laptop before trying to remove the battery.
- Turn the laptop upside down, and find the sliding tabs located on the battery.
- Slide both tabs in an inward direction then slide the battery away from the laptop

Step 2 — Back Cover



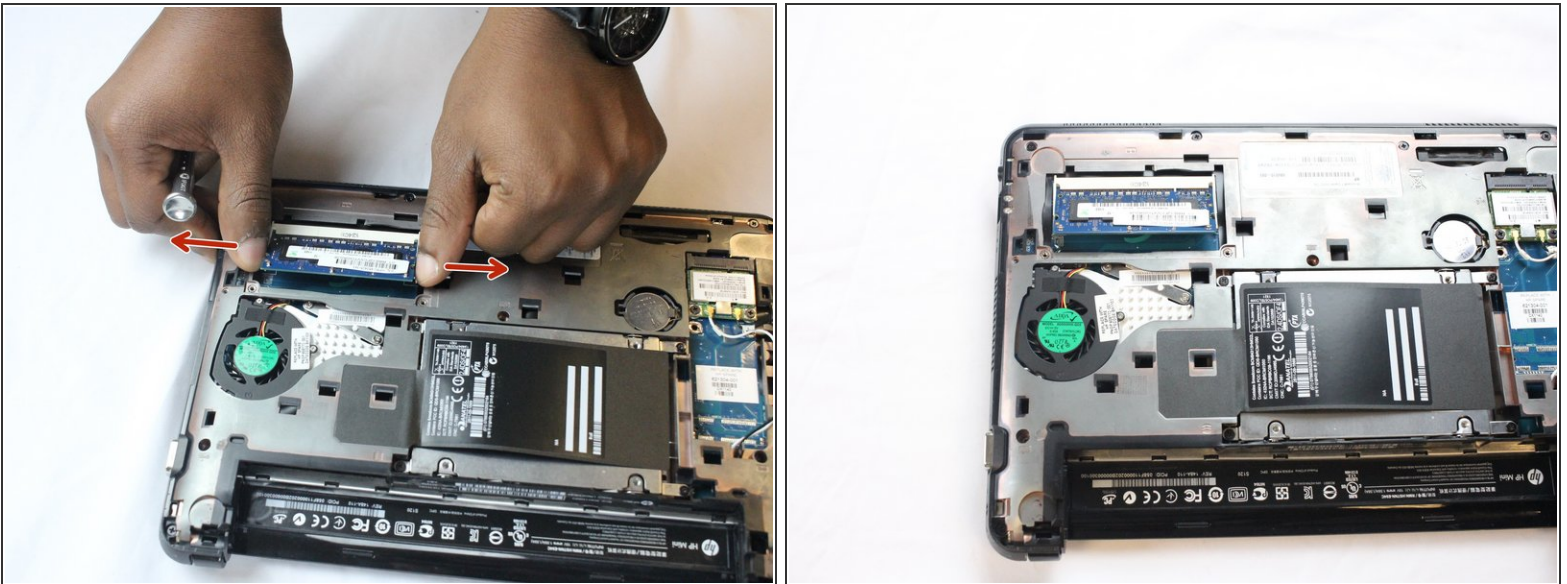
- To remove the bottom cover pull the orange tab to the right until it clicks.
- Carefully disconnect the clips as you lift the bottom cover

Step 3 — Memory Card



- Find the two silver screws that hold the memory card cover.
- Take a PH1 screwdriver and unscrew the two screws.
- Remove the metal cover

Step 4



- Pull the two white tabs located on either side of the memory card away from each other until the card pops up
- Remove the card

To install the new memory card, follow these instructions in reverse order.