



# HP Mini 110-3131dx Wireless Card Replacement

If you can't connect using WiFi, then your Wireless Card may need to be replaced. Follow this guide to replace your Wireless Card for your HP Mini 110-3131dx.

Written By: aarondcollege





## TOOLS:

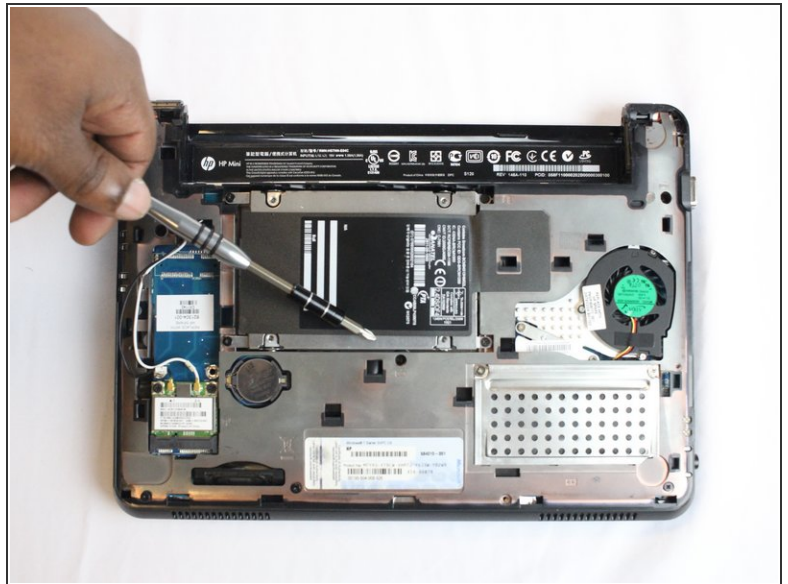
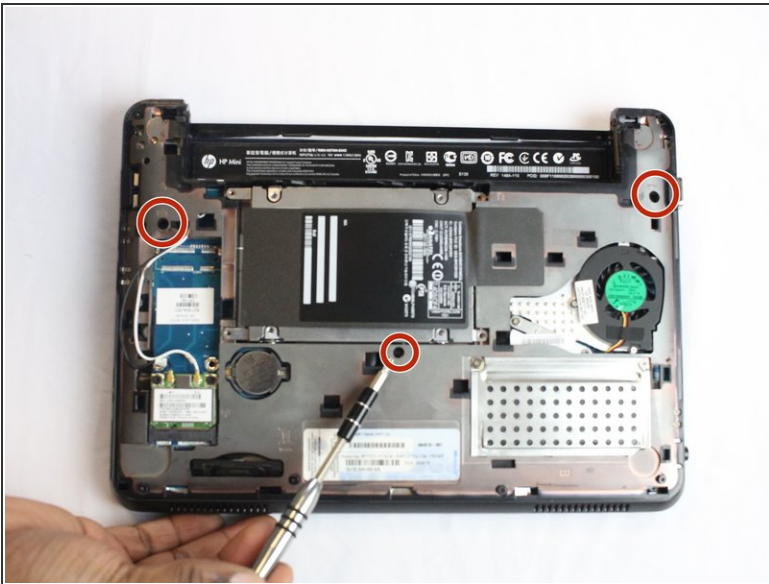
- [Phillips #1 Screwdriver](#) (1)
  - [iFixit Opening Tools](#) (1)
-

## Step 1 — Battery



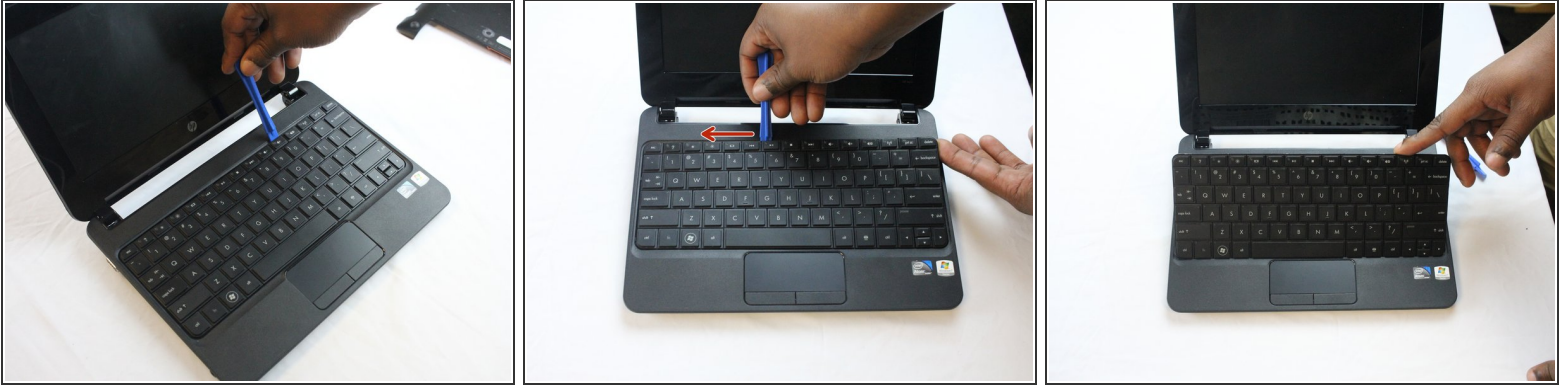
- Completely turn off the laptop before trying to remove the battery.
- Turn the laptop upside down, and find the sliding tabs located on the battery.
- Slide both tabs in an inward direction then slide the battery away from the laptop

## Step 2 — Keyboard



- Remove the three black screws marked by the keyboard symbol using the PH1 screwdriver

## Step 3

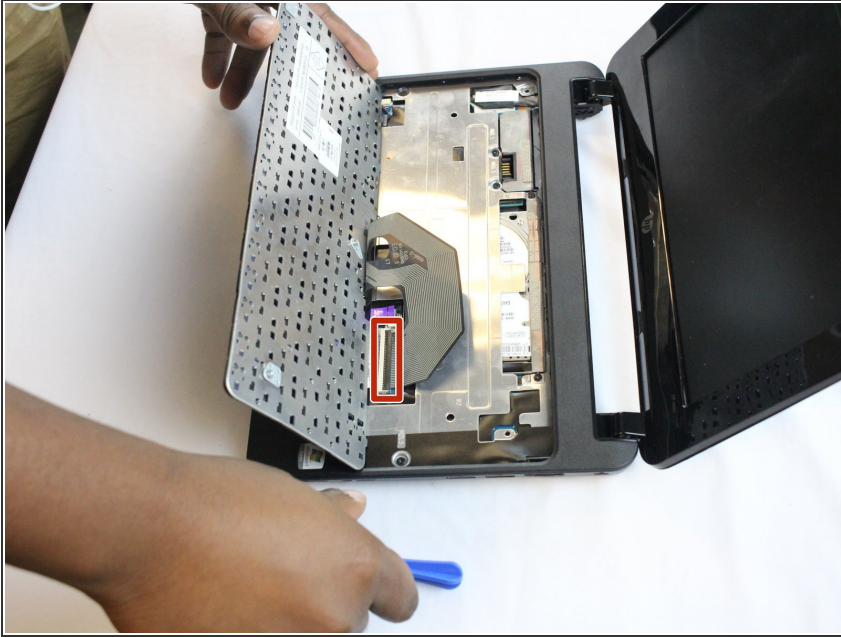


- Turn the laptop upright and open it
- Disconnect the clips located around the perimeter of the keyboard
  - Starting from either the left or right side, slide the plastic opening tool between the top edge of the keyboard and the plastic bezel (start either above the esc key or the delete key)
- Lever the keyboard up until it comes out or you can also grab the keyboard with your fingers, and then gently pull the keyboard until it comes out on both sides.

**⚠ Be careful not to pull keyboard out too fast, because there is a fragile ribbon cable that attaches to the motherboard behind the keyboard.**

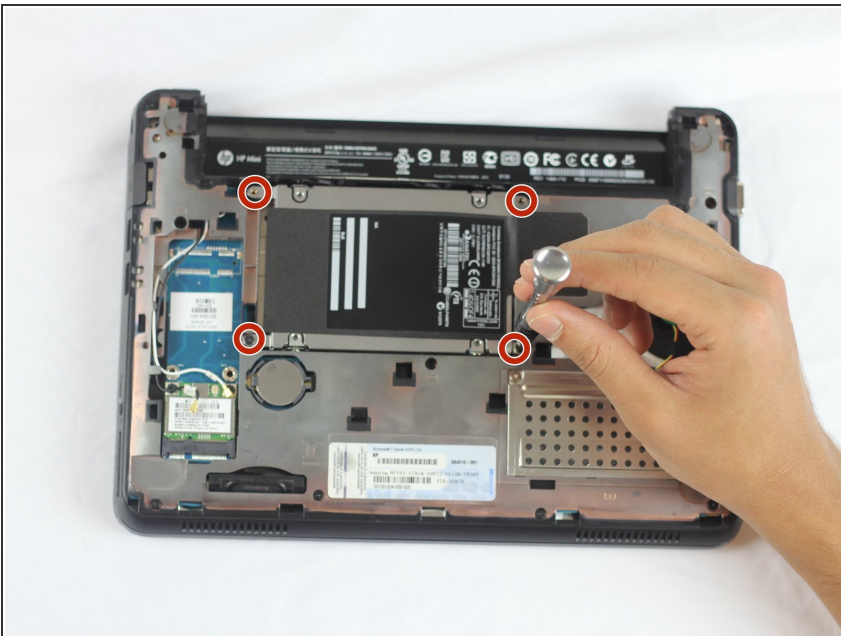


## Step 4



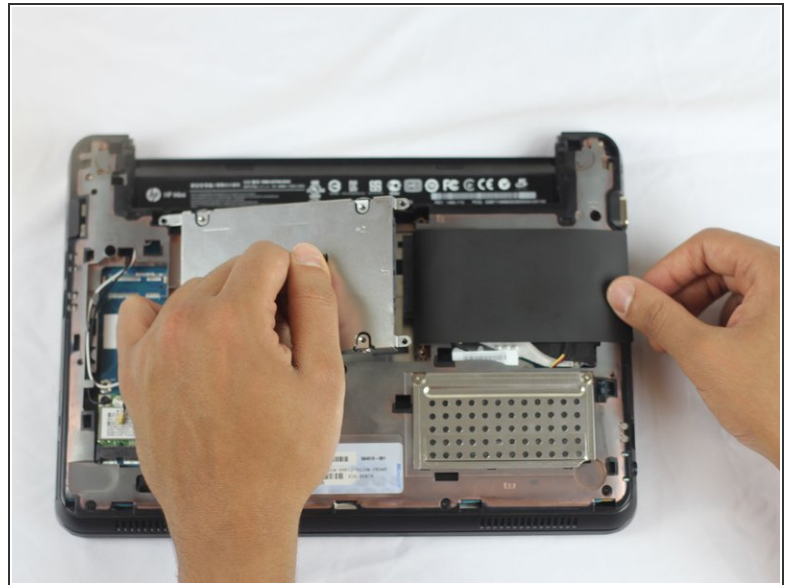
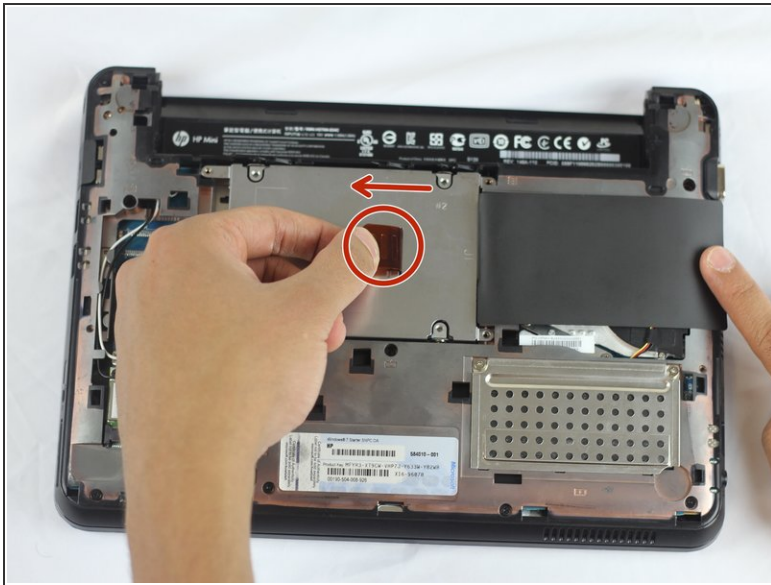
- Tilt the keyboard over to reveal the ribbon cable.
- Lift up the black tab on top of the keyboard ribbon cable to release the ribbon cable.
- Pull the ribbon cable out of the receptacle. This should not require any effort.

## Step 5 — Hard Drive



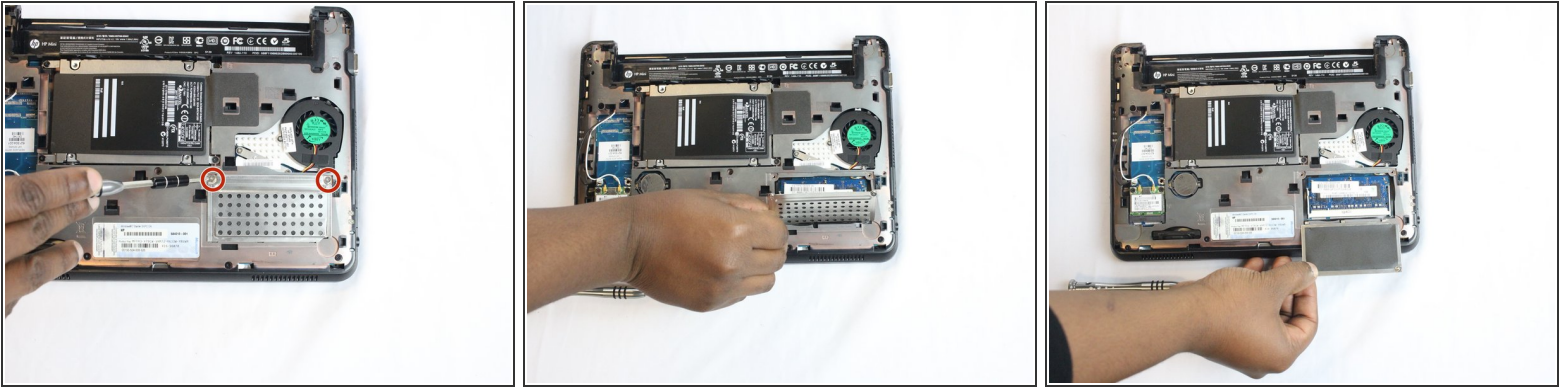
- Remove the four screws holding down the hard drive.
- Use a Phillips PH1 screwdriver for the four black screws around the hard drive

## Step 6



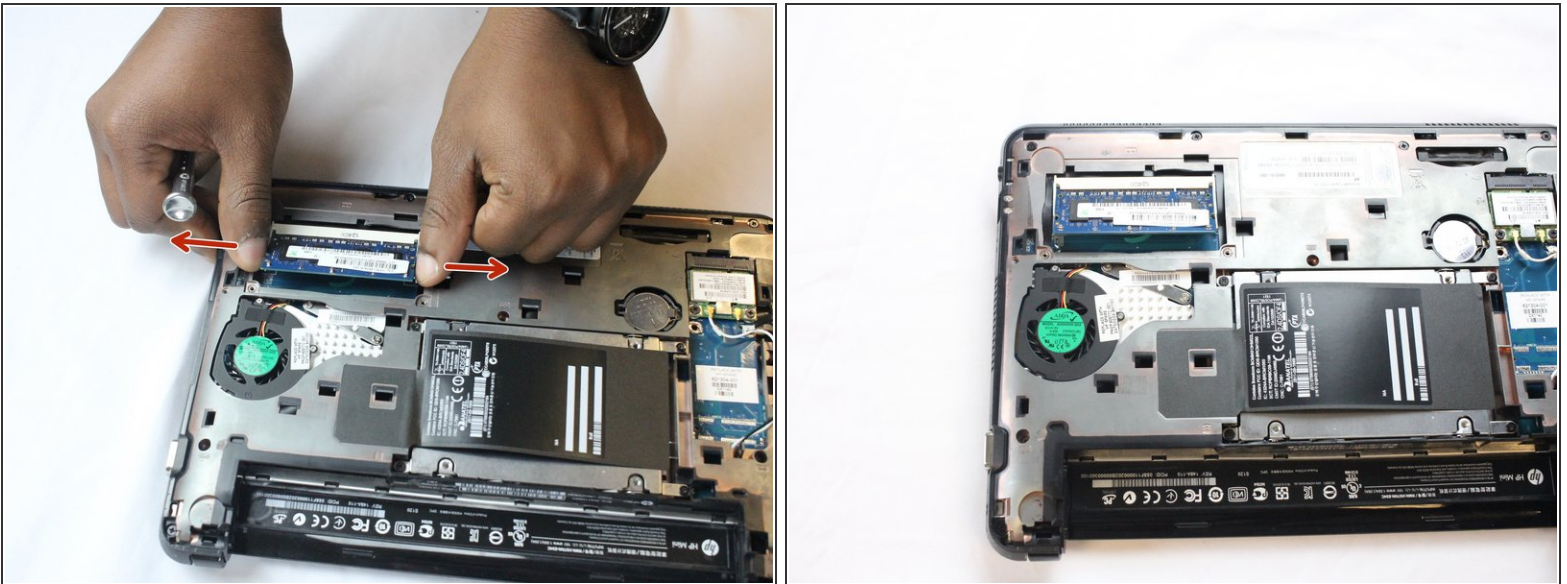
- Lift the black flap covering the hard drive then slide it towards the left using the orange tab until it's released from its receptacle.
  - ⚠ Do not pull out until disconnected
- Pull the hard drive out of the laptop.
  - ⓘ Put the hard drive in an anti-static bag to decrease the likelihood of harming it with static electricity.

## Step 7 — Memory Card



- Find the two silver screws that hold the memory card cover.
- Take a PH1 screwdriver and unscrew the two screws.
- Remove the metal cover

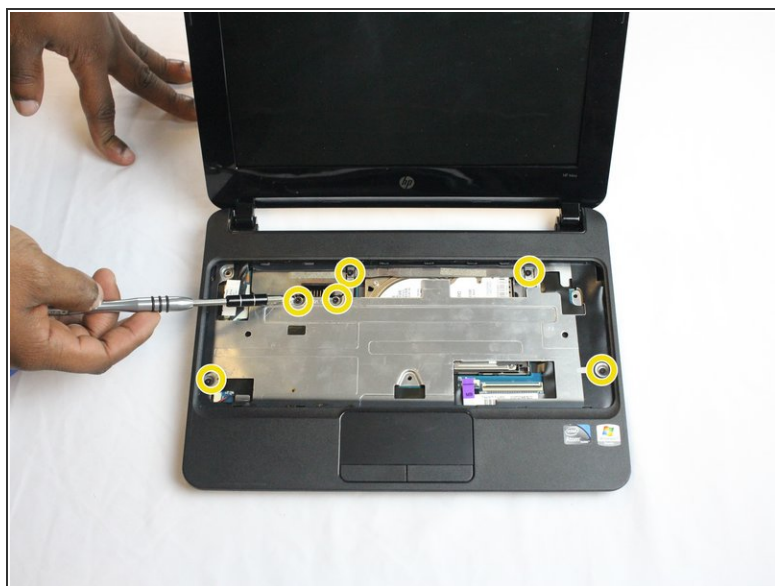
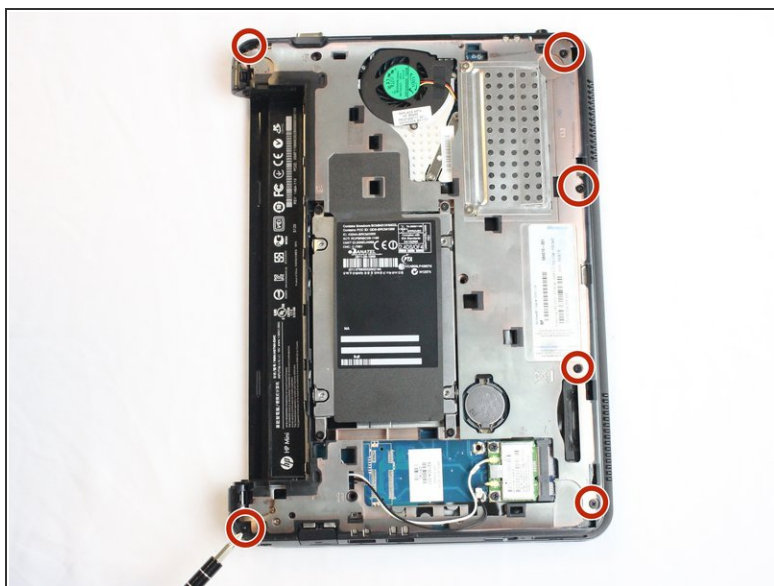
## Step 8



- Pull the two white tabs located on either side of the memory card away from each other until the card pops up
- Remove the card



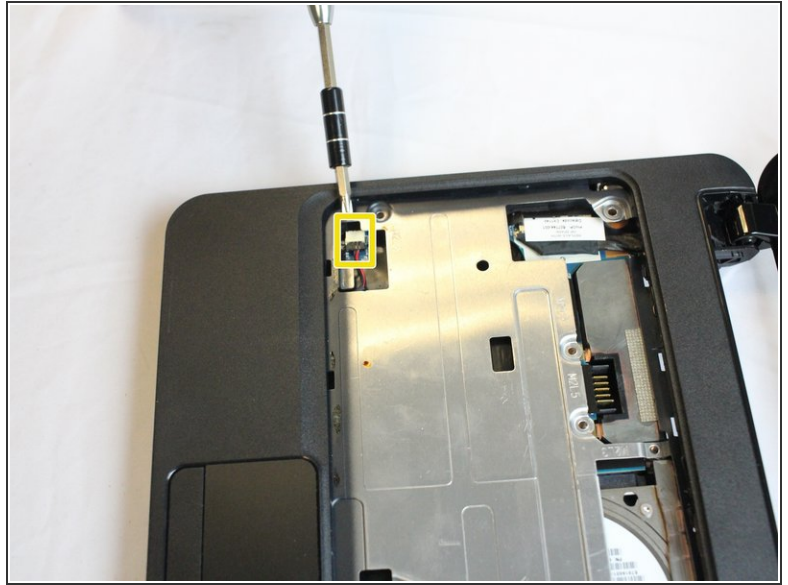
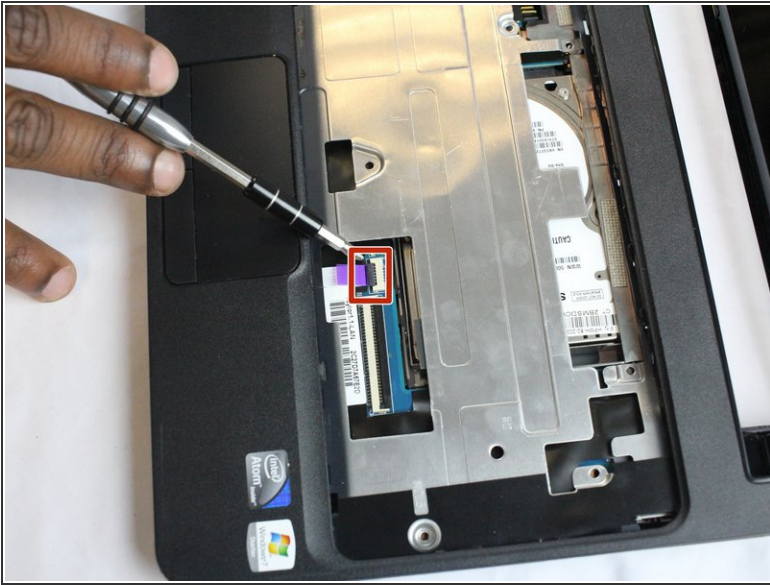
## Step 9 — Keyboard Bezel



- Using the PH1 screwdriver remove the 6 black screws around the perimeter of the bottom of the laptop
- Flip the laptop over and remove the 6 black screws indicate by the yellow circles
- ⓘ Be sure to keep track of which screws go where as they are not all the same size

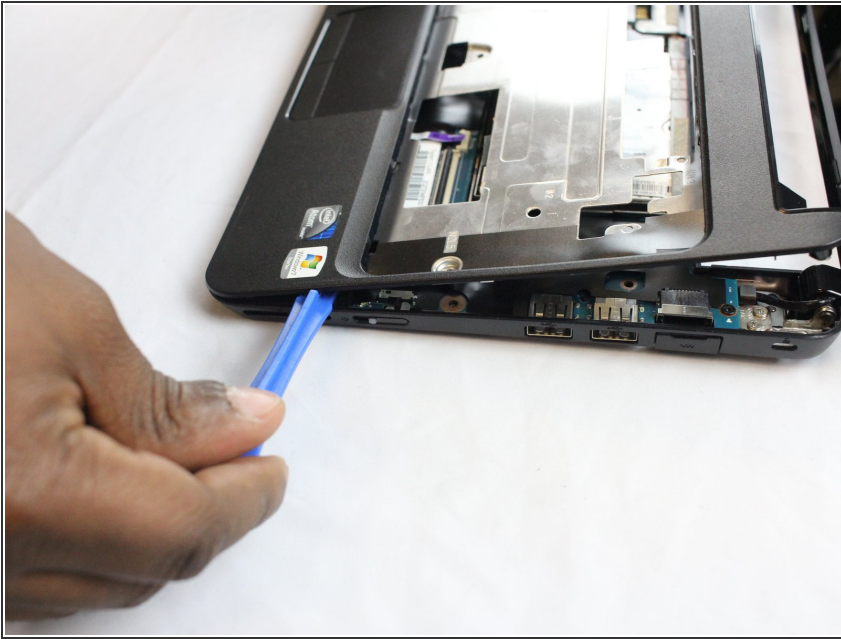


## Step 10



- Locate the black and white tab on the right hand side that connects the touchpad ribbon cable to the motherboard.
- Using your fingernail or a plastic opening tool, flip the black tab up to release the ribbon cable.
- Locate the red and black wires on the left hand side of the bezel.
- Using you fingers or a plastic opening tool, disconnect these wires from the mother board.

## Step 11



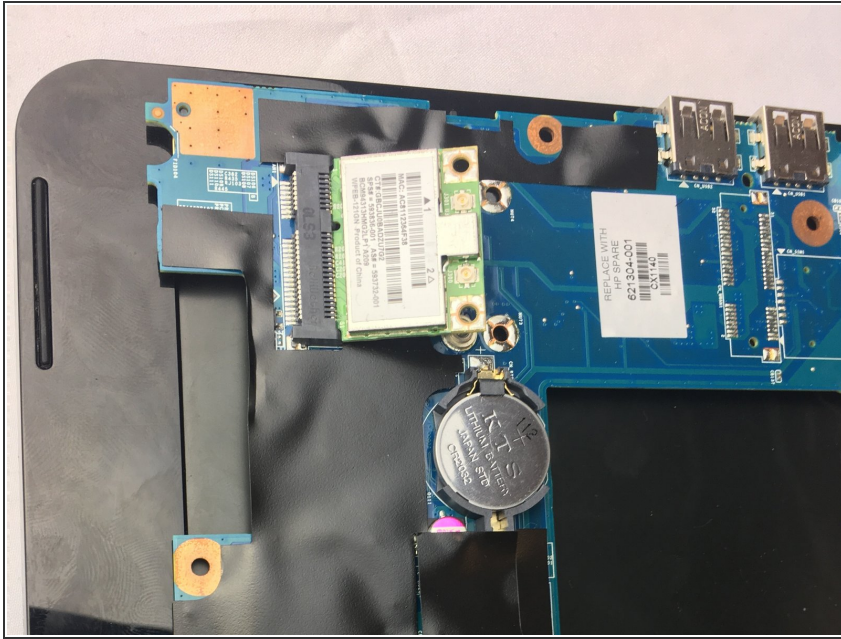
- Lift the bezel from the back end and slide the plastic opening tool around the perimeter of the bezel until it is fully released

## Step 12 — Wireless Card



- Using a pry stick, removing the two cables from the back of the card.
  - ☑ Be sure to remember which cable attaches to which connector on the card. The cable with the white band should be attached to the connector labelled "J2."

## Step 13



- Detach the two 3.4mm screws that is holding down the back of the card with a Phillips PH0 screwdriver.
- ⓘ The card is spring loaded at the receptacle. If you are holding it down, the card will jump up once both screws are disassemble.
- Allow the card to raise up, and then slightly push it out of the black receptacle.
- ⓘ As you are putting the card back in, make sure it is fully placed in the receptacle before pushing it back down to place in the screws.

To reassemble your device, follow these instructions in reverse order.