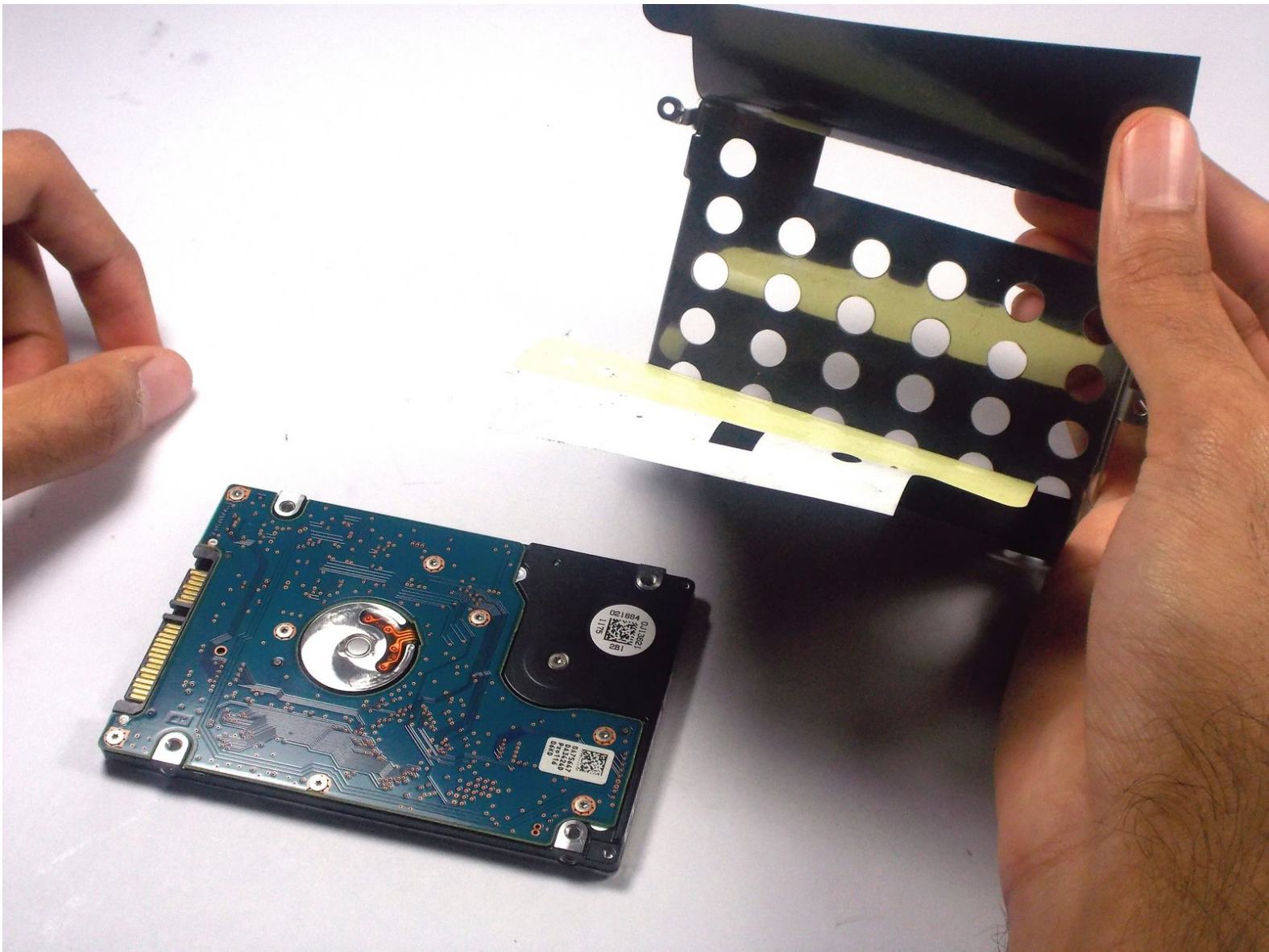




HP Mini 110-3735dx Hard Drive Replacement

Replacing the hard drive of your HP Mini 110-3735dx.

Written By: Tyrone Williams



INTRODUCTION

If your hard drive is broken or you just want to upgrade, this guide will walk you through the steps for replacing the hard drive.



TOOLS:

- [Phillips #1 Screwdriver](#) (1)
-

Step 1 — Battery



- With the bottom of the HP Mini facing up, slide both switches inward towards each other.

Step 2




- With the left switch still pushed inward, pull the battery towards you to remove it from the computer.

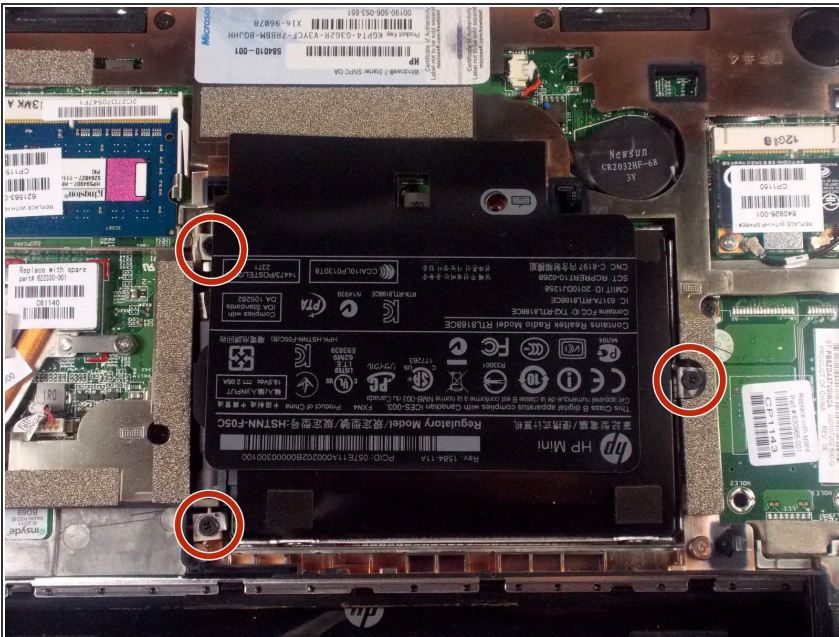
Step 3 — Backcover



- Pull upward from under the back cover via the missing battery area.

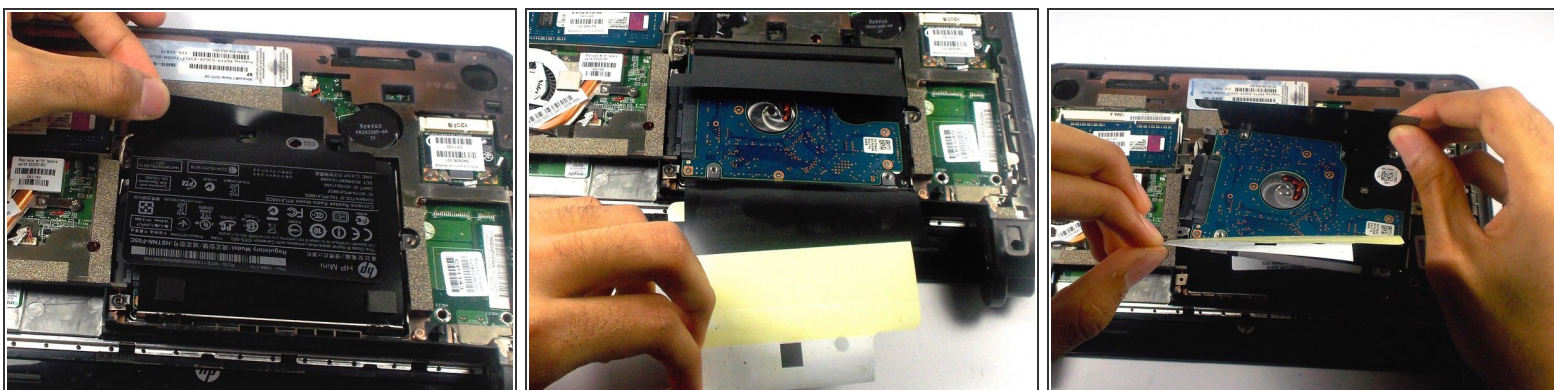
 Best to start from one of the corners.

Step 4 — Hard Drive Cage



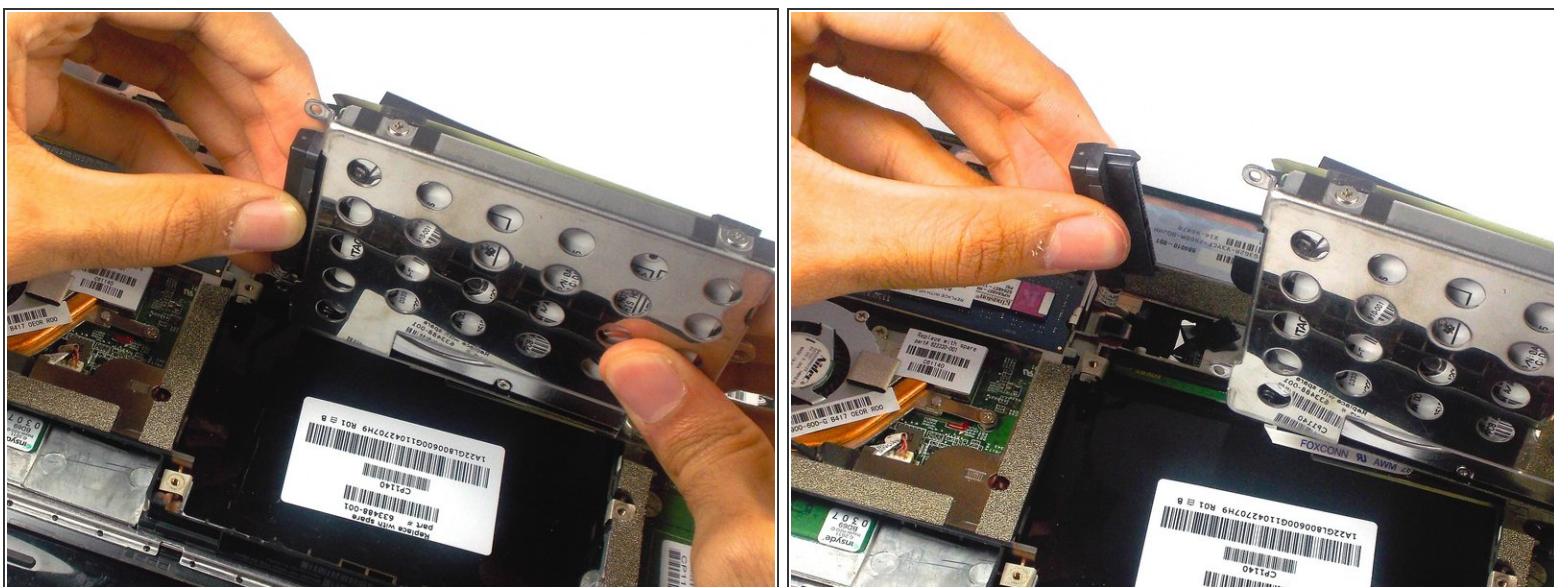
- Remove the three 5.0 mm screws holding the hard drive cage in place using a Phillips #1 screw driver.

Step 5



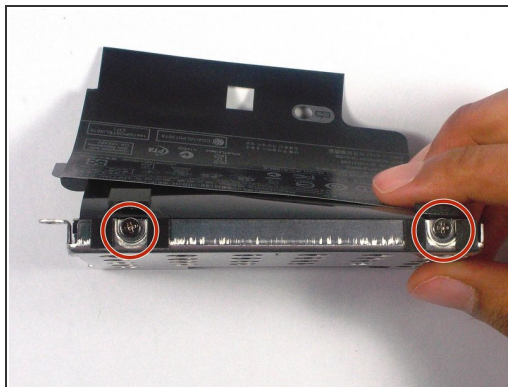
- Lift the hard drive cage by pulling the tape upward.
- Start by pulling the tape from the side with the keyboard symbol.

Step 6



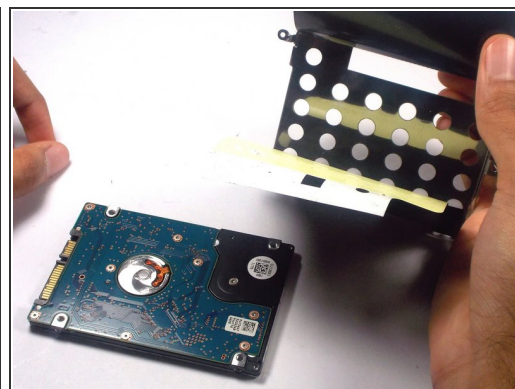
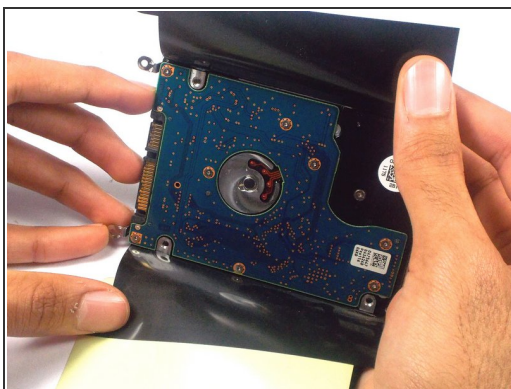
- Unplug the cable connecting to the hard drive.

Step 7 — Hard Drive



- Remove the four 4.0 mm screws on both sides of the cage using a Phillips #1 screw driver.

Step 8



- Gently remove the hard drive from it's cage.

To reassemble your device, follow these instructions in reverse order.