



# HP Mini 110-3735dx Screen Replacement

Replace the screen of your HP Mini 110-3735dx.

Written By: Tyrone Williams



---

# INTRODUCTION

If your screen is damaged, flicking, or cracked, use this guide to replace the screen.

---



## TOOLS:

- [Phillips #1 Screwdriver](#) (1)
  - [iFixit Opening Tools](#) (1)
  - [Tweezers](#) (1)
-

## Step 1 — Battery



- With the bottom of the HP Mini facing up, slide both switches inward towards each other.

## Step 2



- With the left switch still pushed inward, pull the battery towards you to remove it from the computer.



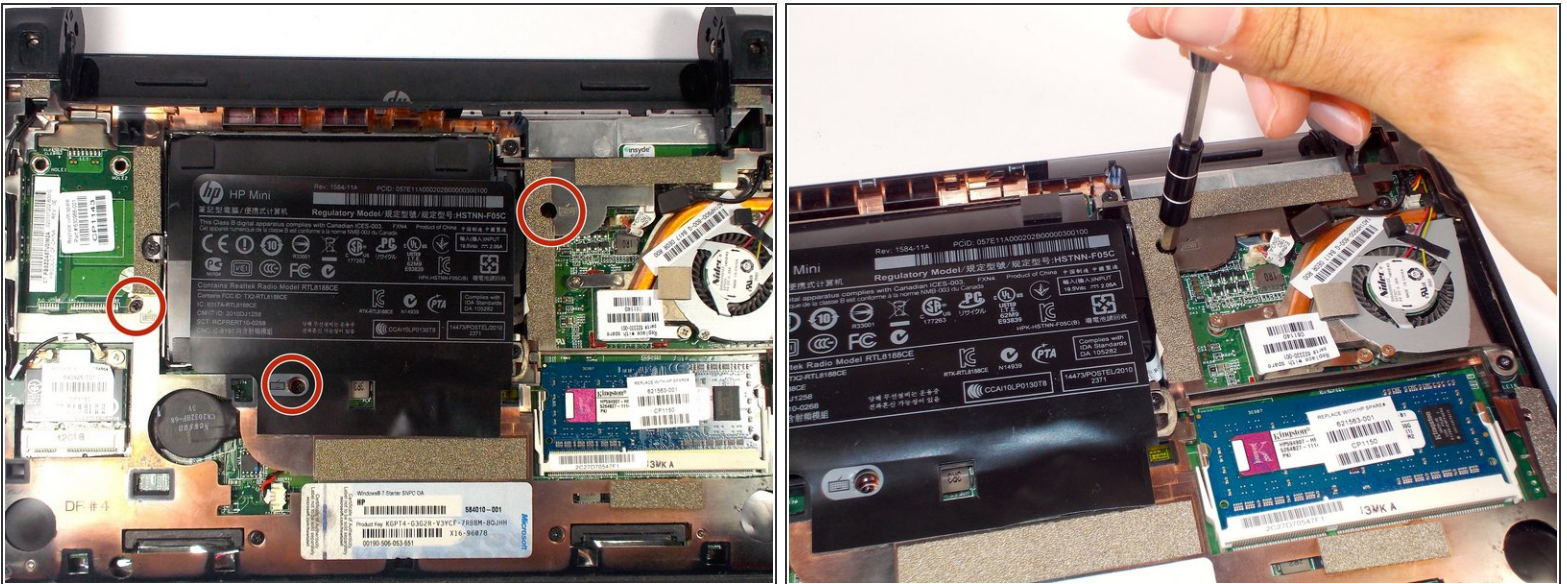
## Step 3 — Backcover



- Pull upward from under the back cover via the missing battery area.

**i** Best to start from one of the corners.

## Step 4 — Keyboard



- Remove the three 4.0 mm screws with the keyboard indicator next to them using a Phillips #1 screw driver.



## Step 5



- Flip the laptop over, and open it up.

**i** Don't worry! No pieces will fall out.

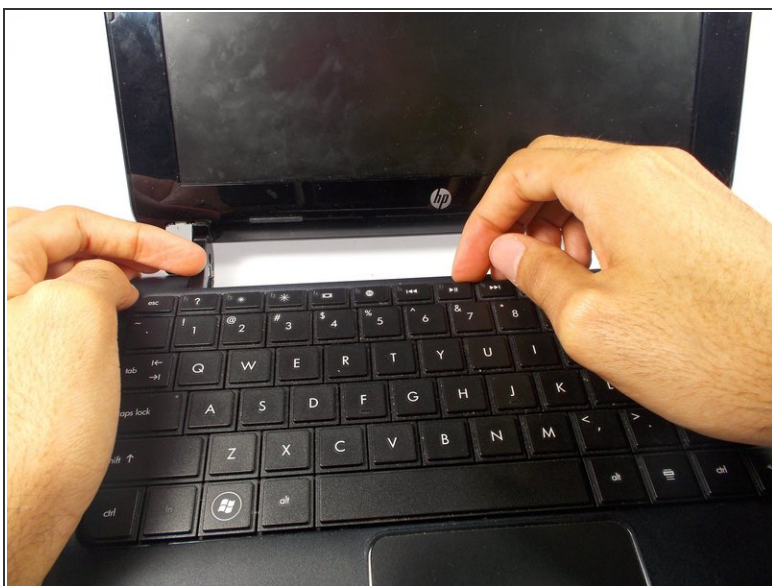
## Step 6



- With the keyboard facing you, pull the black bezel upward until its loose.

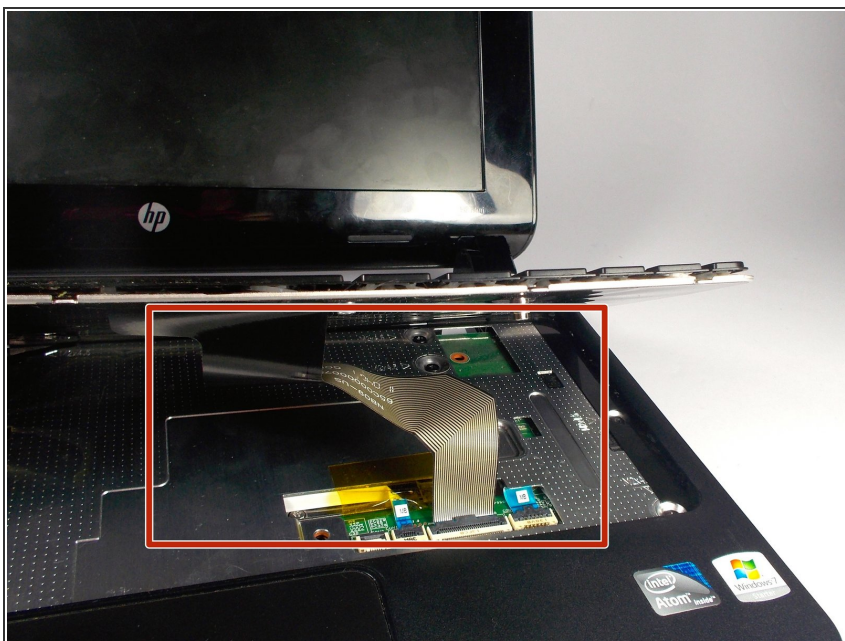
**i** You should hear three clicks.

## Step 7



- Move and hold the bezel slightly towards the screen while lifting the keyboard from the top.

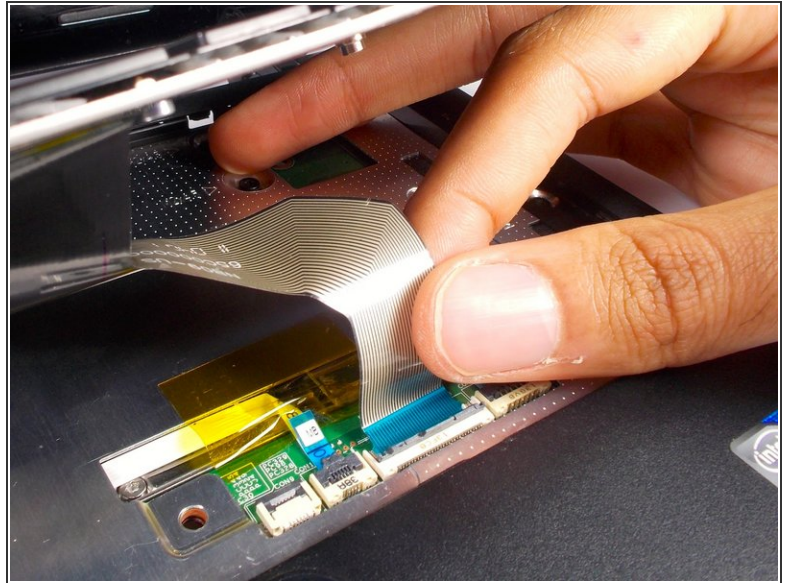
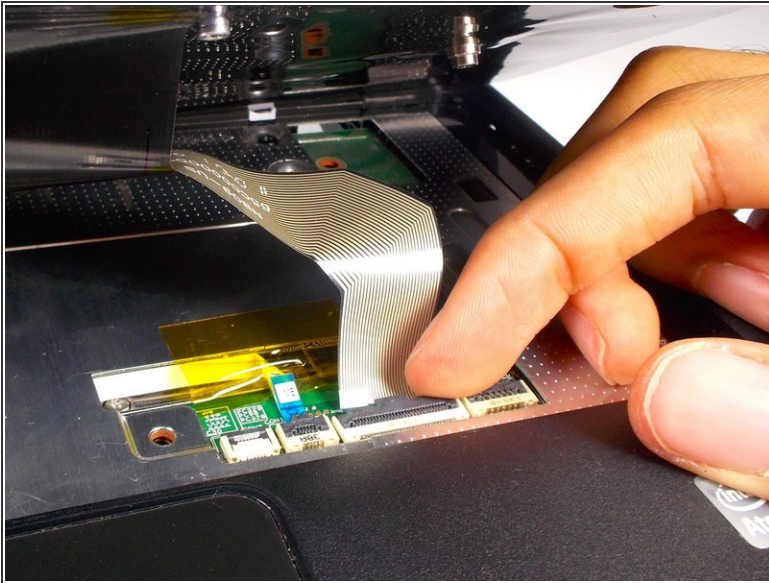
## Step 8



- Pull up the keyboard from the bottom corners exposing the keyboard cable.

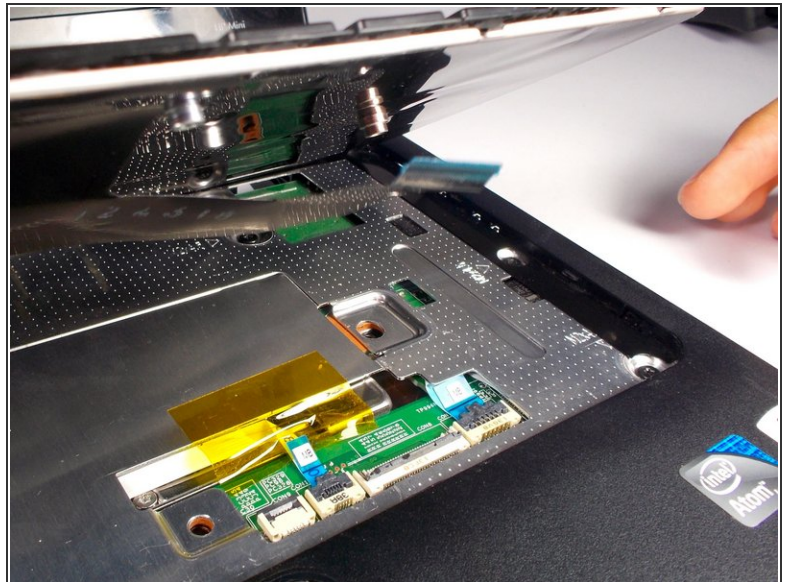
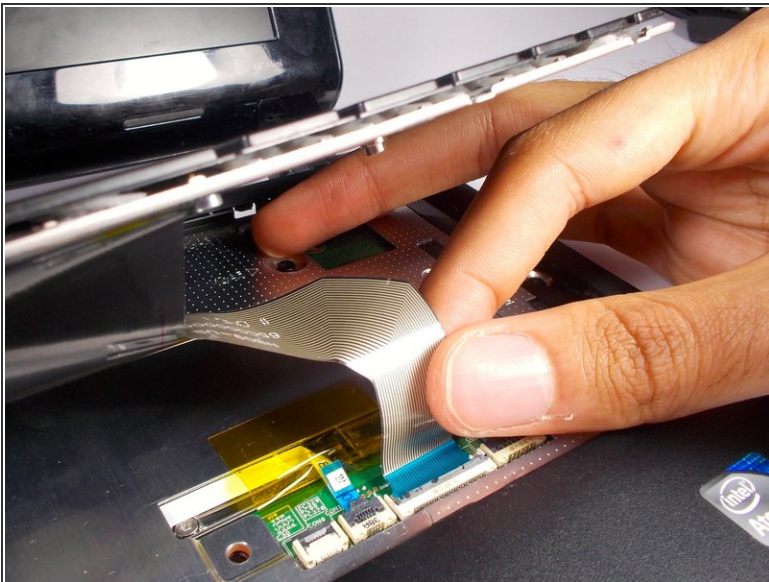


## Step 9



- Lift the black holder connected to the keyboard cable until it points up.

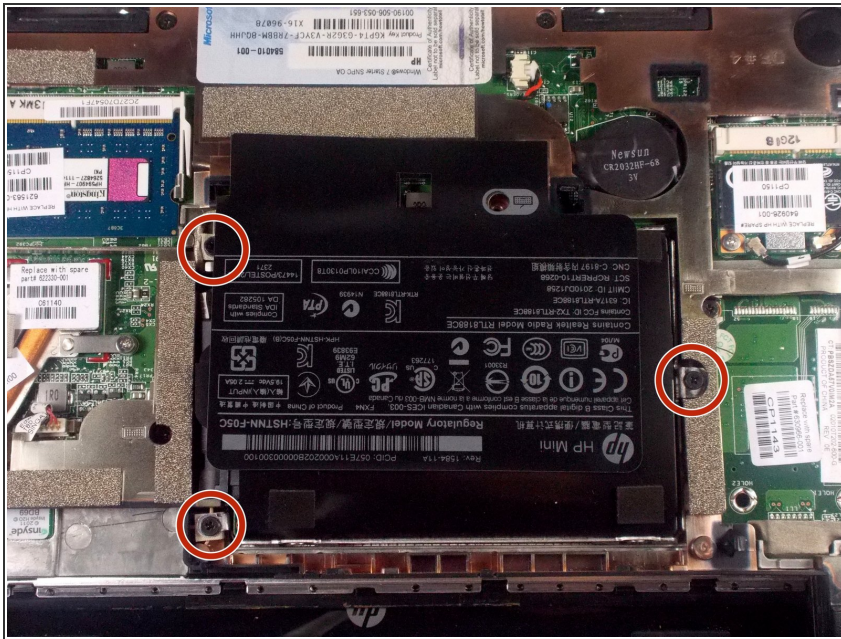
## Step 10



- Gently pull the keyboard cable from the socket.

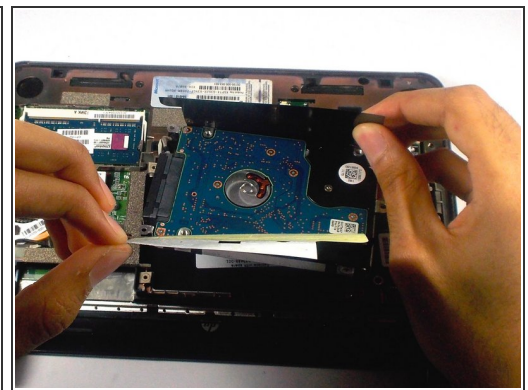
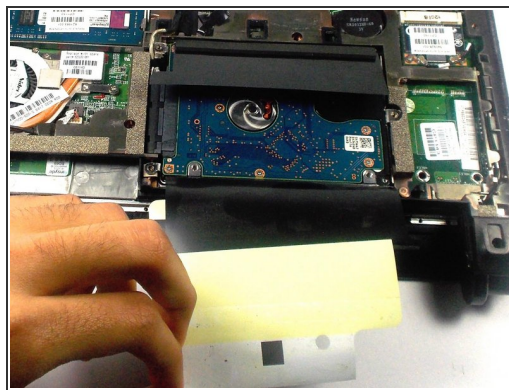
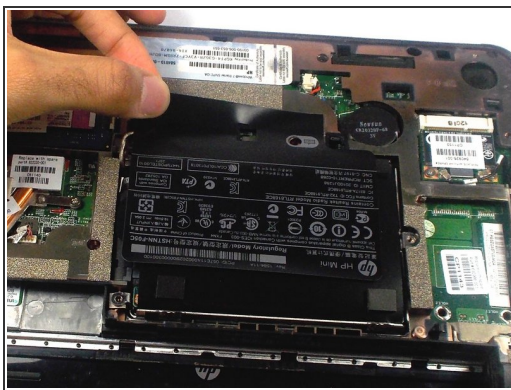


## Step 11 — Hard Drive Cage



- Remove the three 5.0 mm screws holding the hard drive cage in place using a Phillips #1 screw driver.

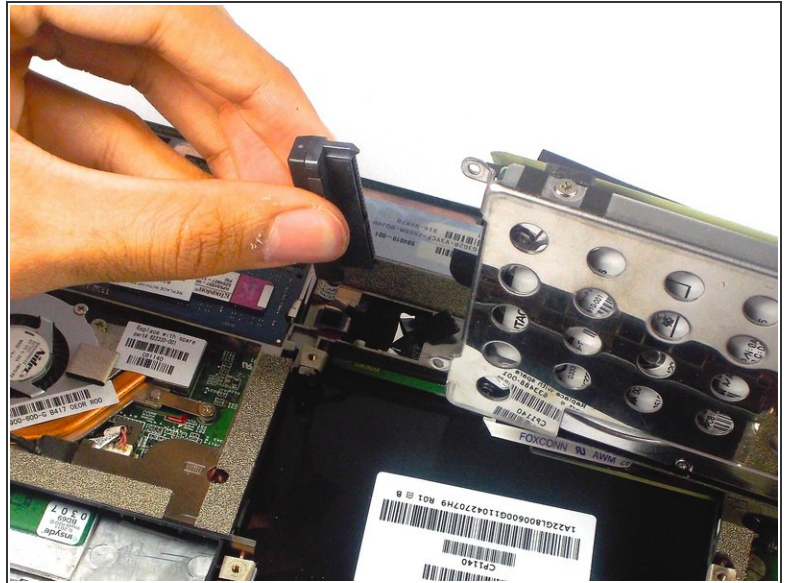
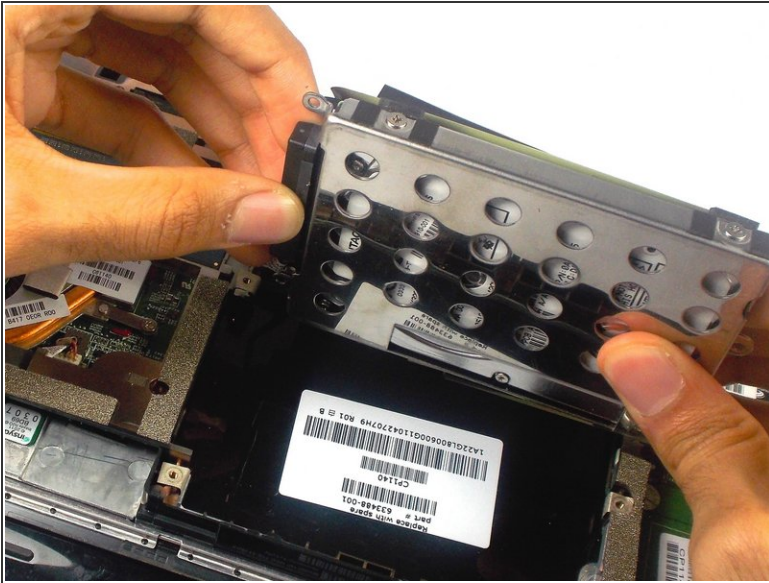
## Step 12



- Lift the hard drive cage by pulling the tape upward.
- Start by pulling the tape from the side with the keyboard symbol.

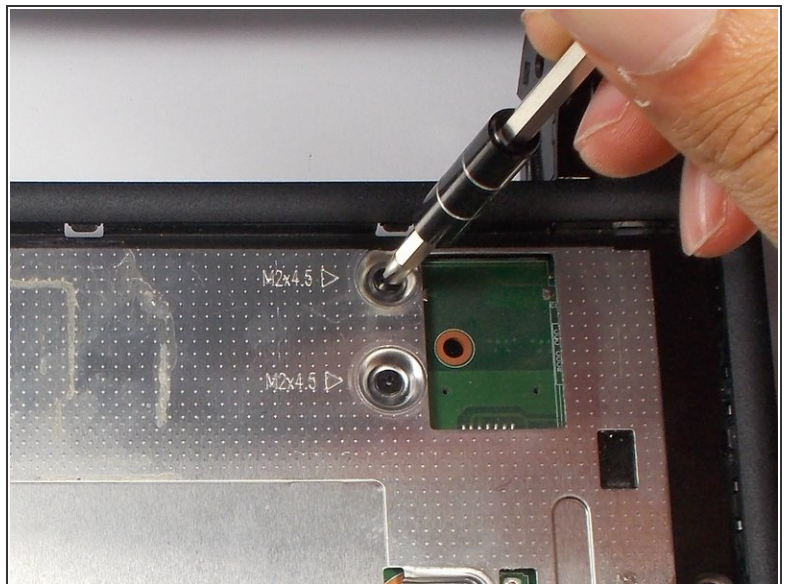
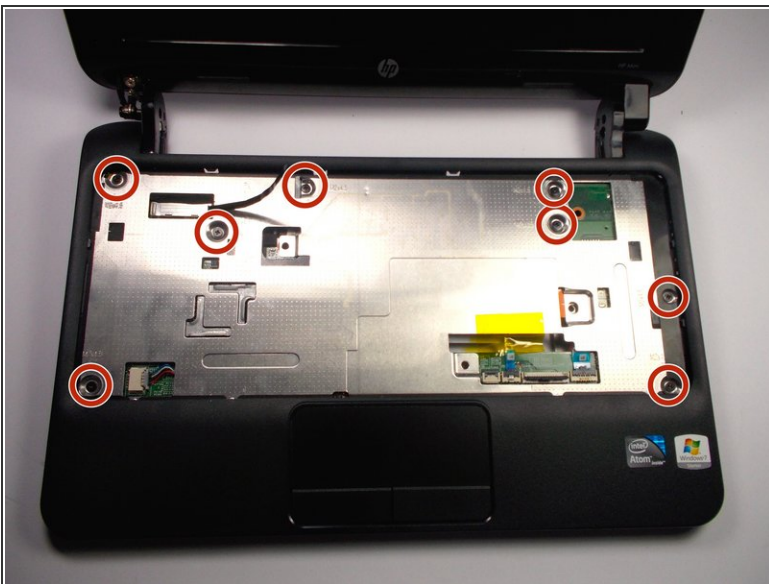


## Step 13



- Unplug the cable connecting to the hard drive.

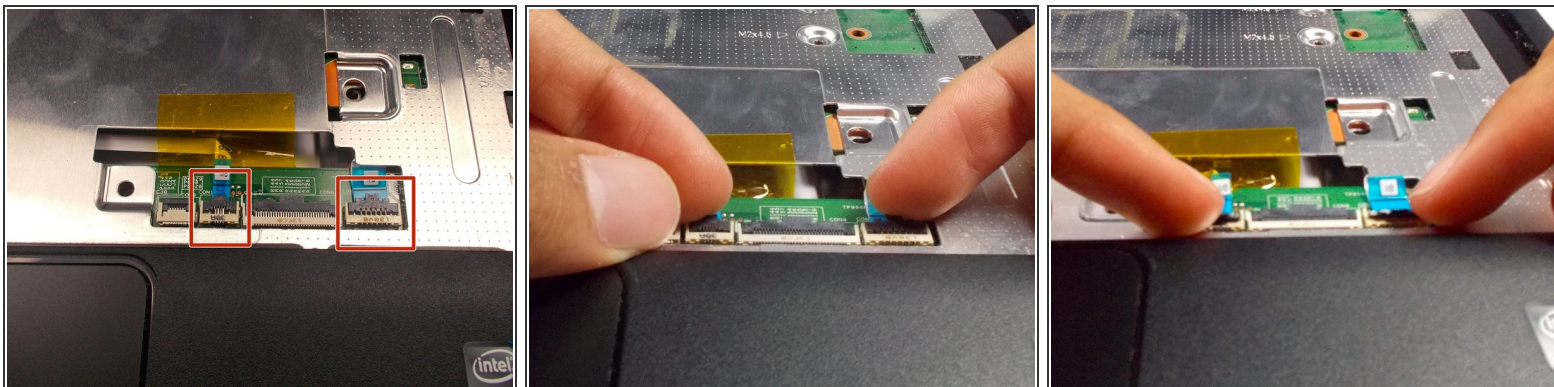
## Step 14 — Screen



- Remove the 8 5.0 mm screws under the keyboard using a Phillips #1 screw driver.

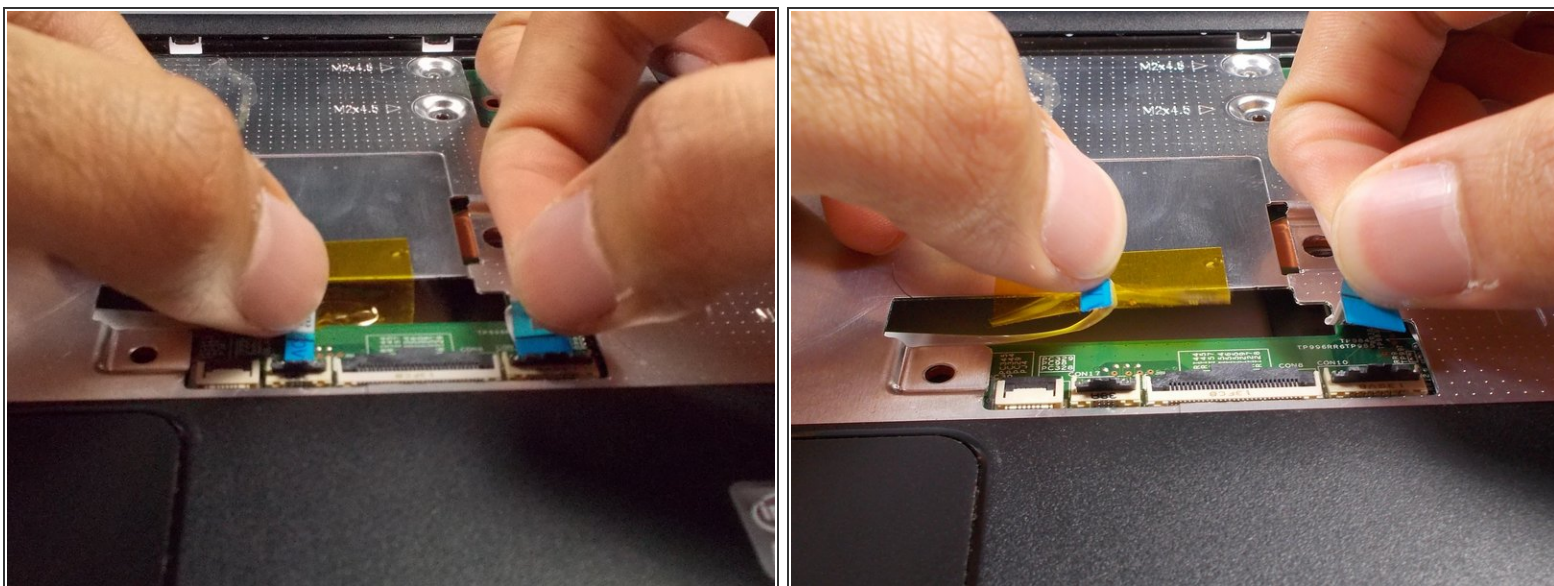


## Step 15



- Lift the two black holders upward located next to the socket for the keyboard close to the tracked pad.

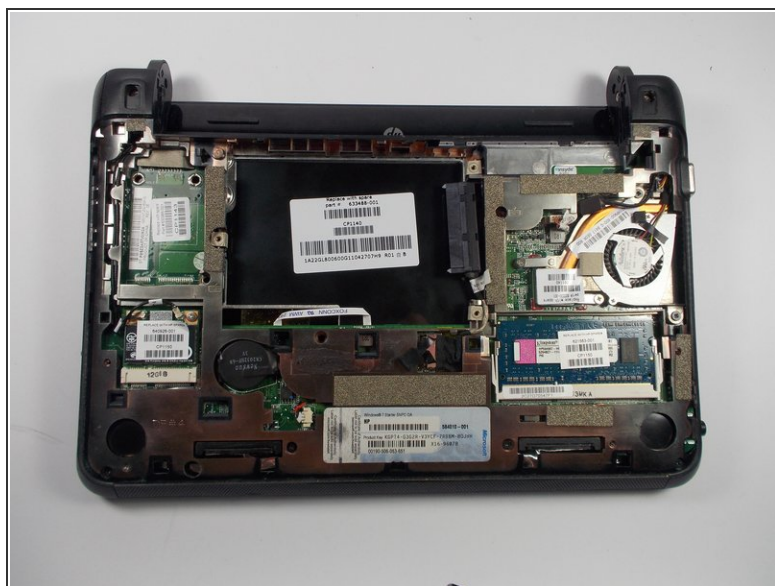
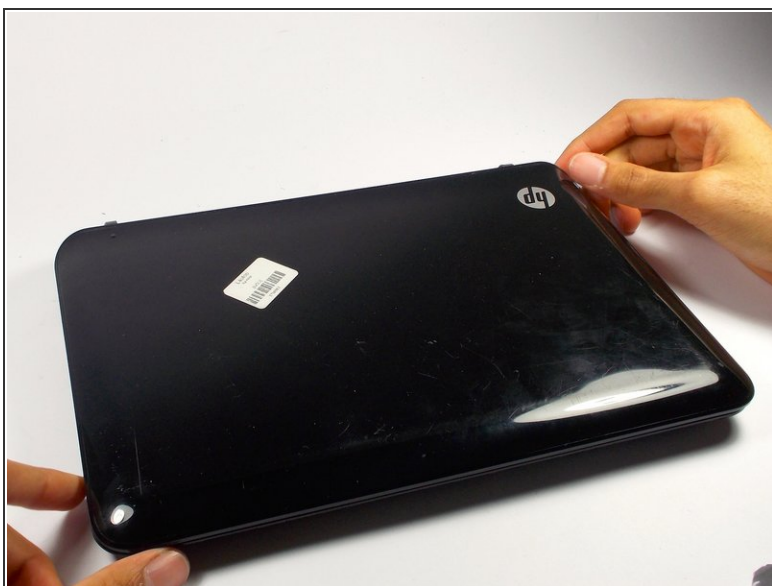
## Step 16



- Remove the two connectors for the motherboard from their sockets.

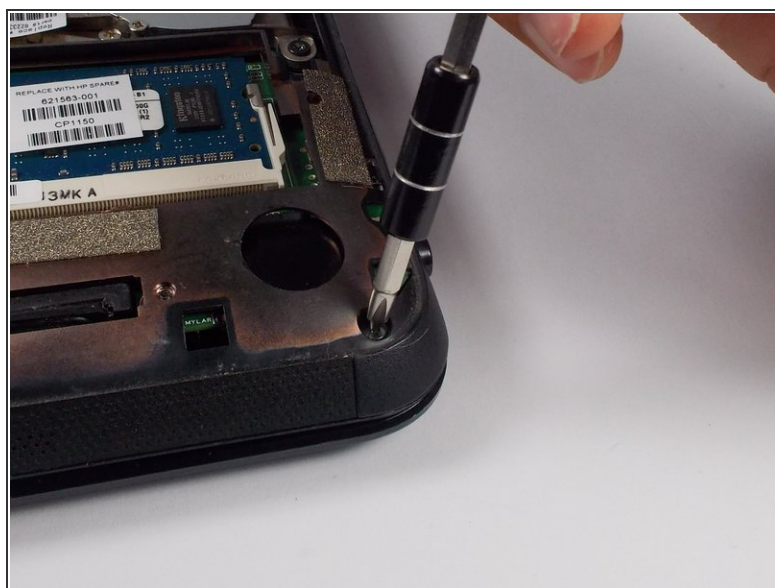
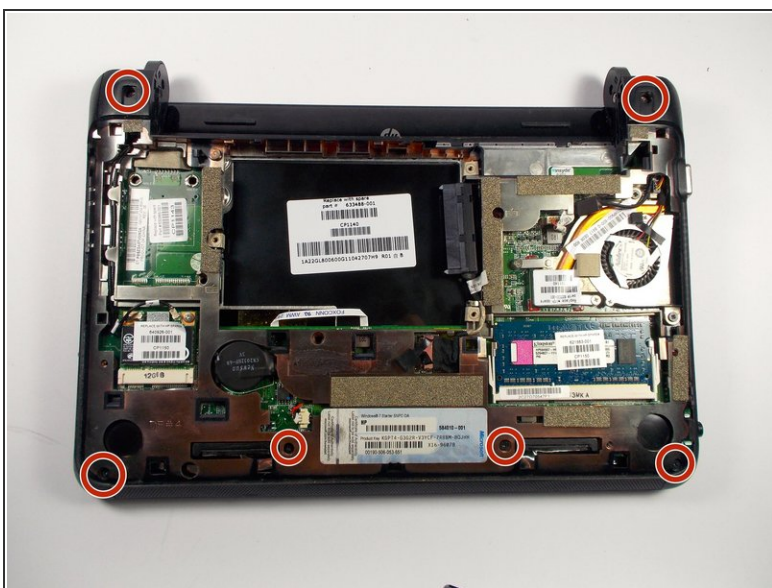


## Step 17



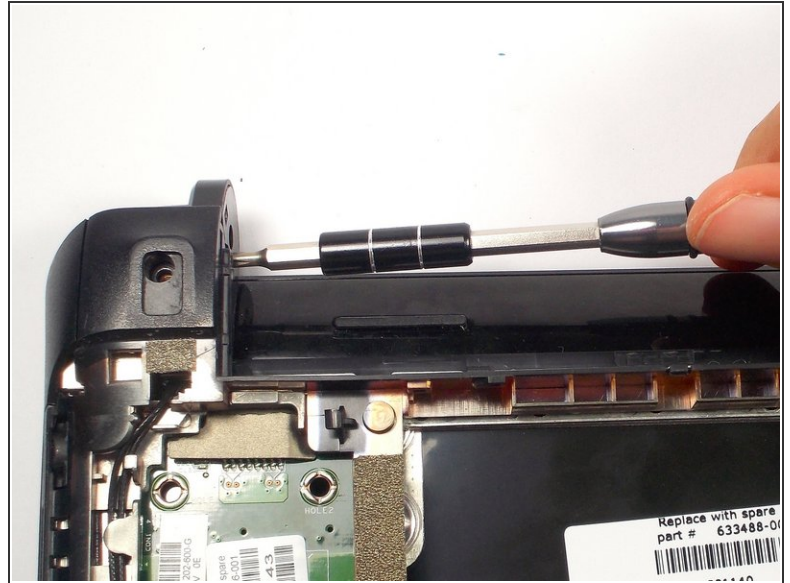
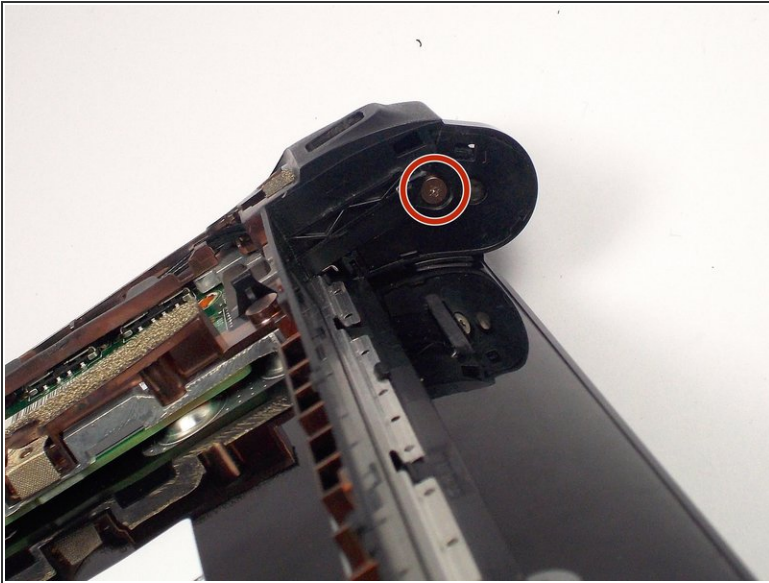
- Close the laptop by bringing the screen down.
- Flip the laptop over to the other side.

## Step 18



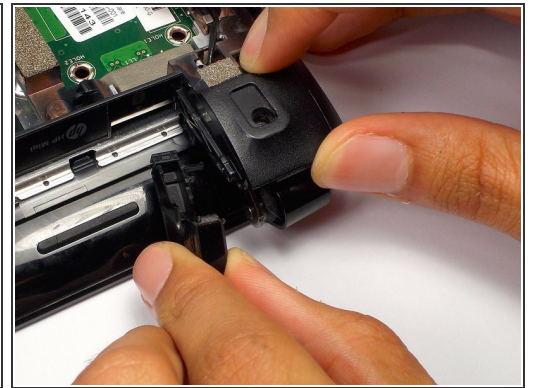
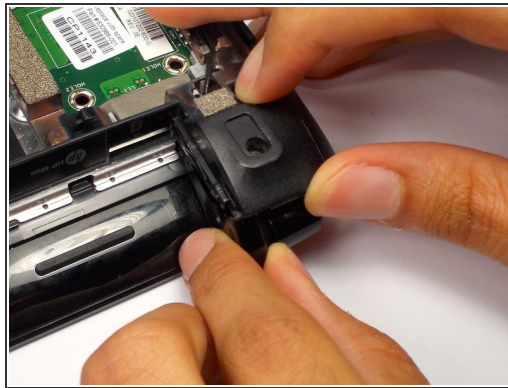
- Remove the 6 5.0 mm screws holding the back plate together using a Phillips #1 screw driver.

## Step 19



- Remove the 2 3.0 mm screw head holding the plastic piece in place using a Phillips #1 screw driver.
- Located on the left and right side where the battery was removed.

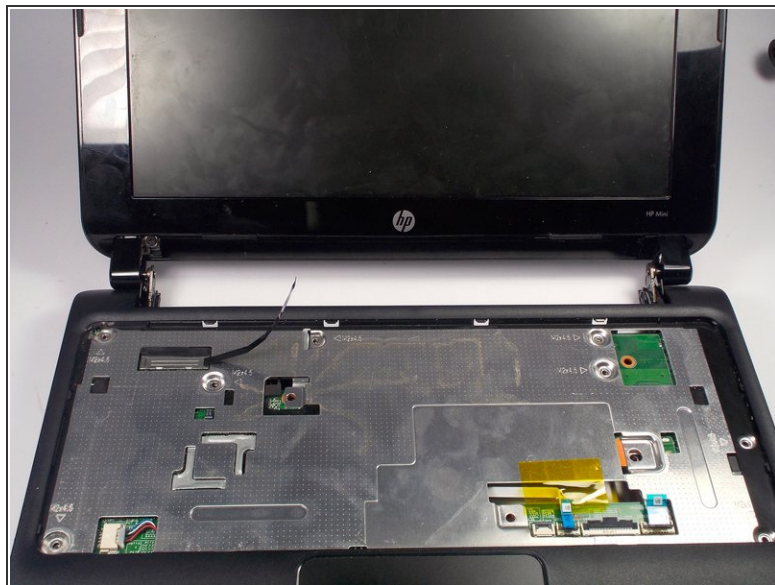
## Step 20



- Pull the black plastic pieces that the screws was holding inward.
- The pieces are located on the left and right corners connecting the bottom and top of the HP Mini.

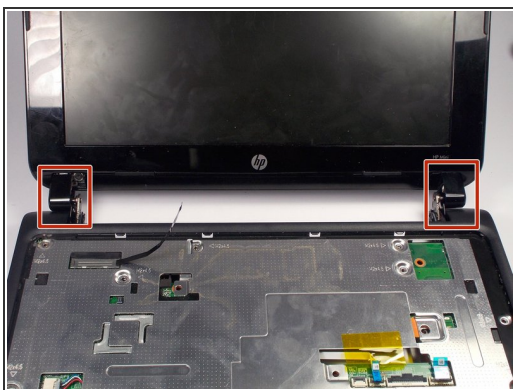


## Step 21



- Flip the laptop back over.
- Open it by lifting the screen.

## Step 22



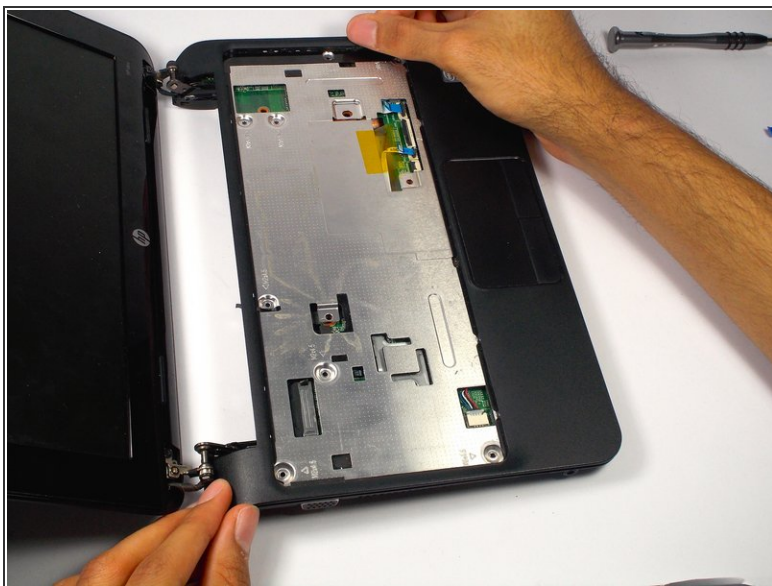
- Right next to the previous plastic piece, remove the other two plastic pieces.
- i** This may be difficult to come off. Tilt the screen back and forth to help loosen the piece.

## Step 23



- Using the plastic prying tool, pry the front plate of the bottom part of your HP Mini.
- ❗ Start along the speaker grill near the touch pad, and move along the sides.

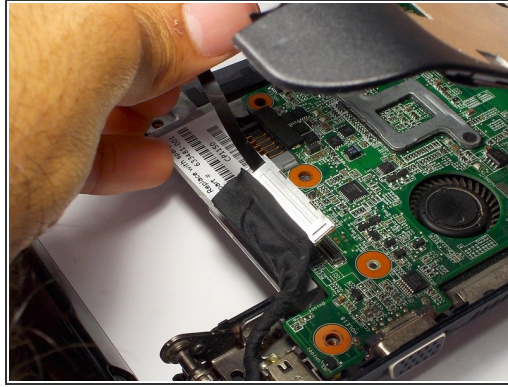
## Step 24



- Lift up the front plate where the keyboard was.

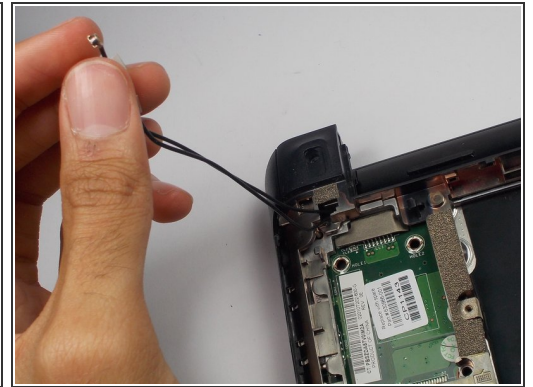
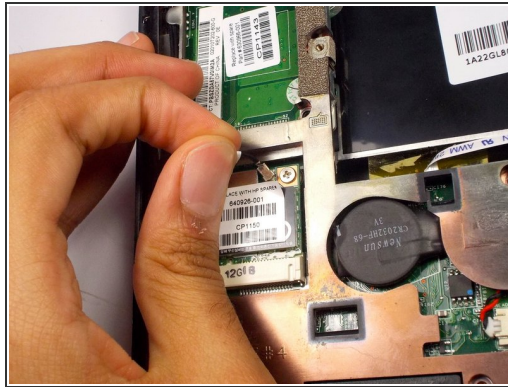
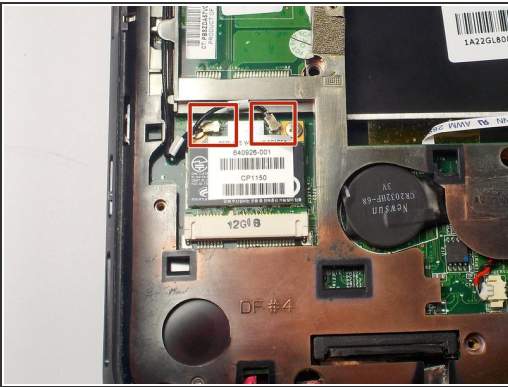


## Step 25



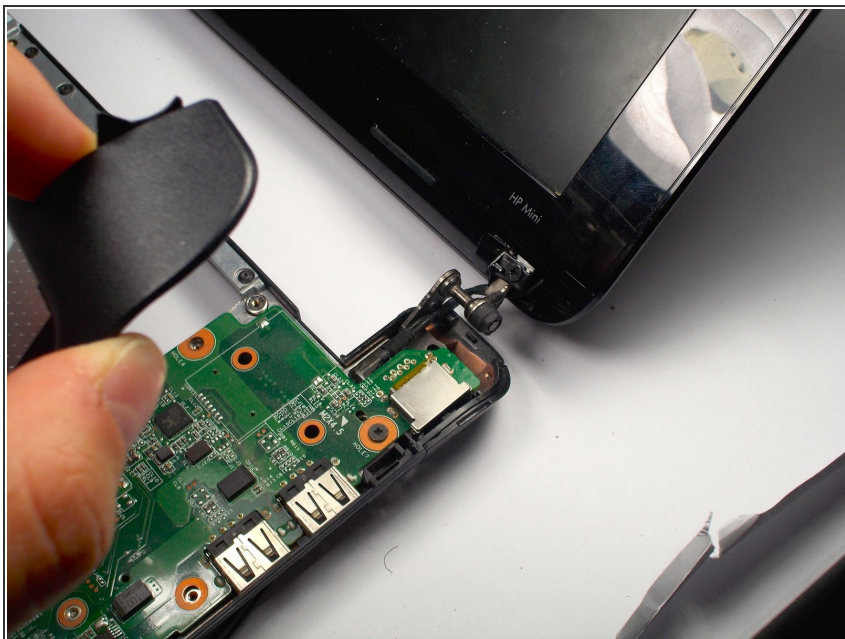
- Remove the display cable from the motherboard located on the top left corner under where the keyboard was by pulling on the black tab.
- Move the cable.

## Step 26



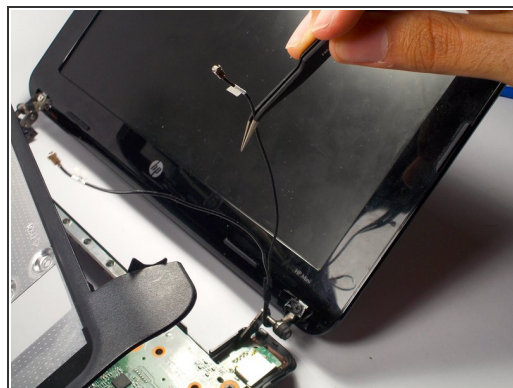
- Remove the webcam cables from the motherboard.
- Located on the back side of the laptop in the bottom left corner.

## Step 27



- Flip over the computer, and open the laptop.
- Lift up the front plate on the top right corner.

## Step 28



- Pull the cables for the web cam out using tweezers.

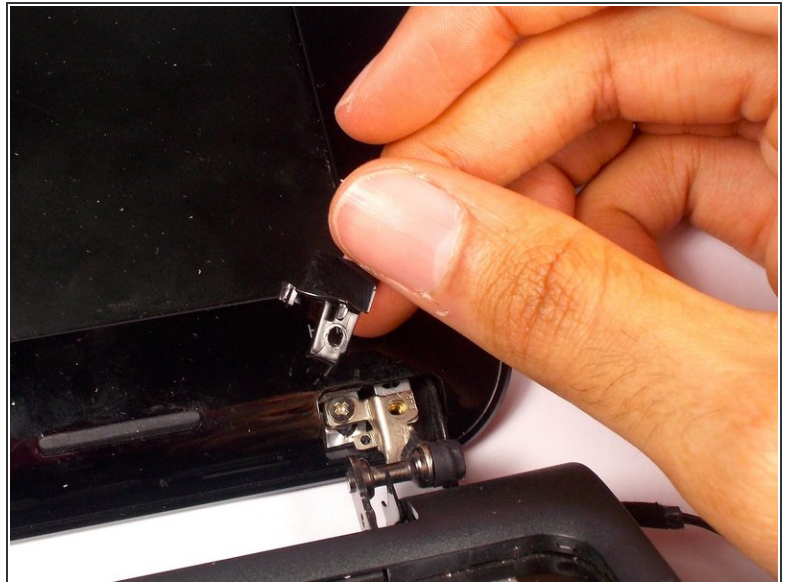
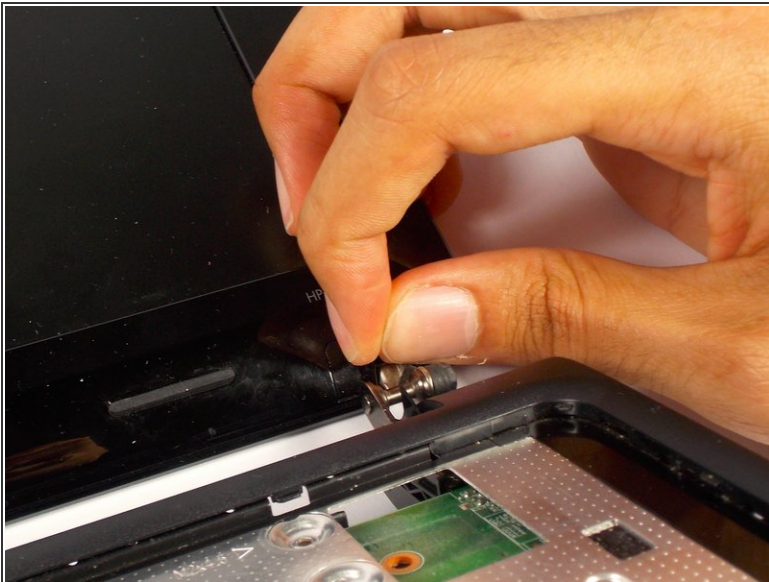


## Step 29



- Remove the 2 3.0 mm screws on both sides of the bottom of the display using a Phillips #1 screwdriver.

## Step 30



- Remove the black plastic piece that the screw was holding on both sides.
- This will reveal another screw.

## Step 31



- Remove the 2 3.0 mm screws on both sides using a Phillips #1 screw driver.

⚠ When removing, keep hold of the screen to make sure it doesn't fall.

## Step 32



- Pry the front plate using the plastic opening tool by pushing along the border of the front and back plate.
- Make sure to pry from the sides, top and bottom as the corners will come undone themselves.

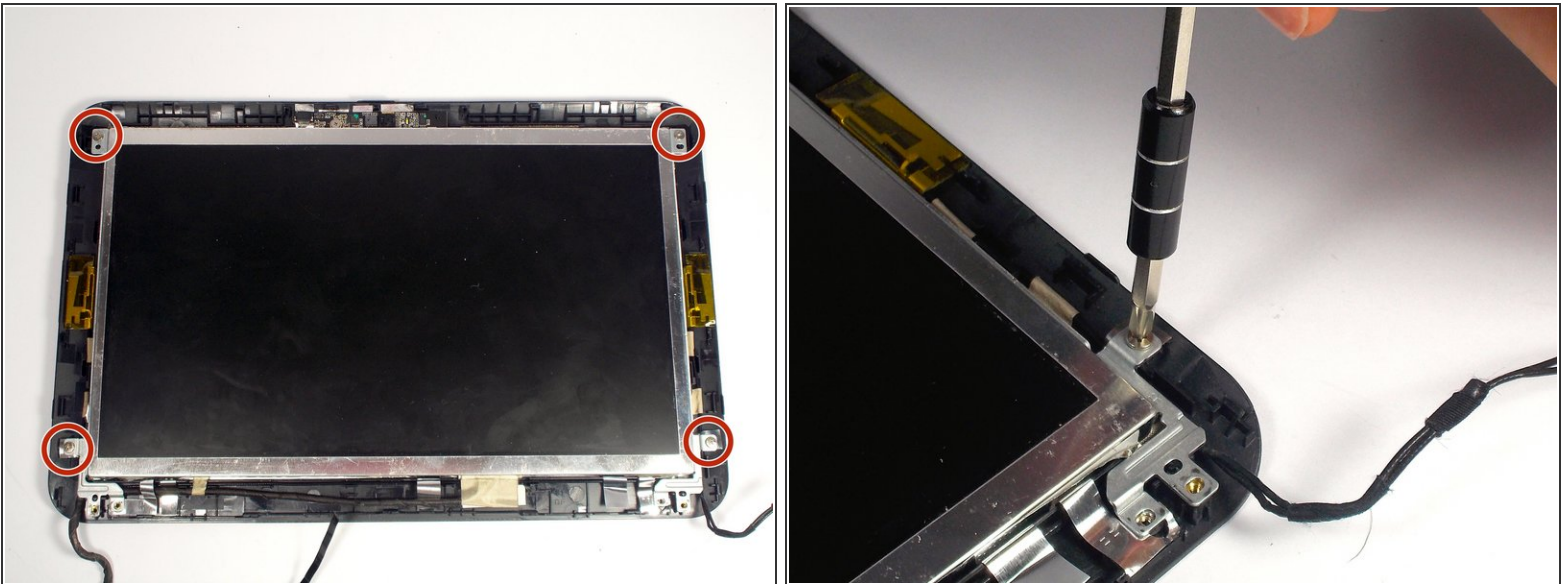


## Step 33



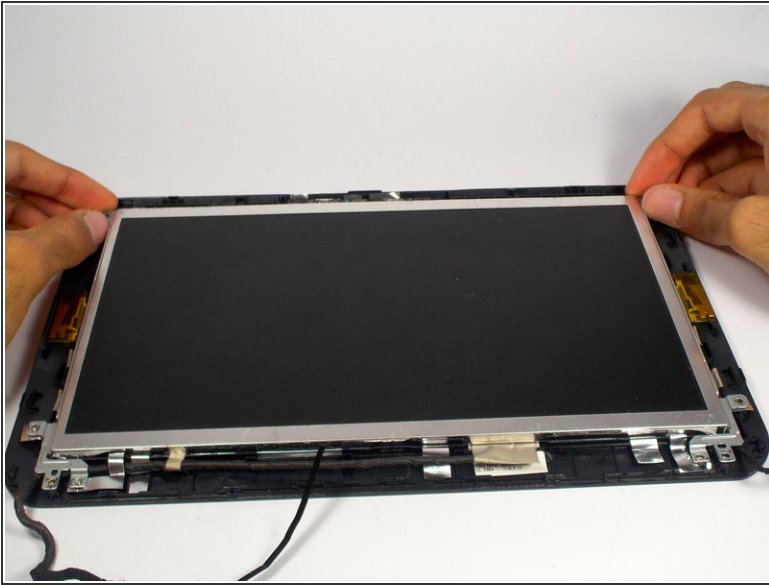
- Remove the front plate.
- Pull the cables through the holes.

## Step 34



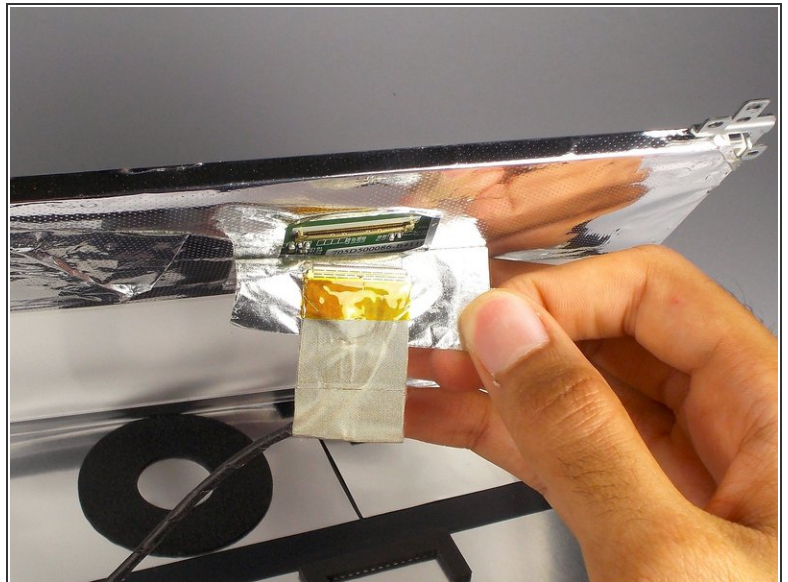
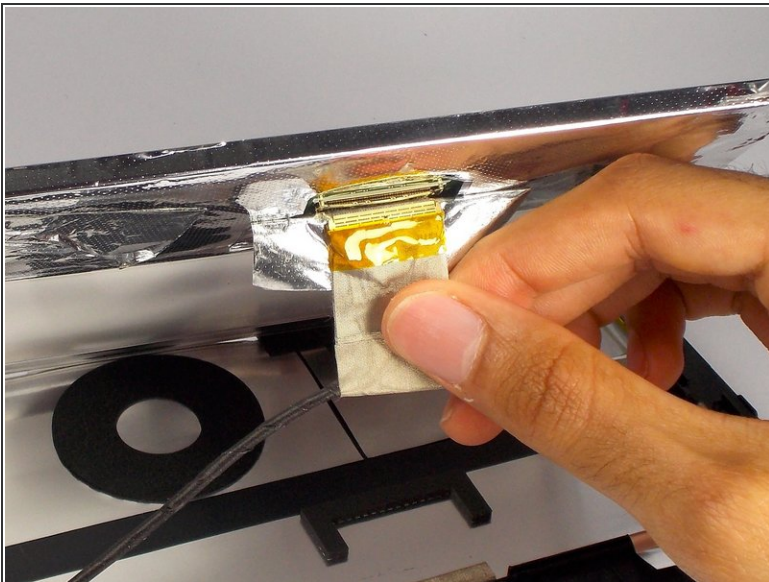
- Remove the 4 4.0 mm screws holding the screen in place using a Phillips #1 screw driver.

## Step 35



- Lift the screen up.

## Step 36



- Under the screen, peel off the tape near the cable completely, so you can see the socket for the cable.



To reassemble your device, follow these instructions in reverse order.