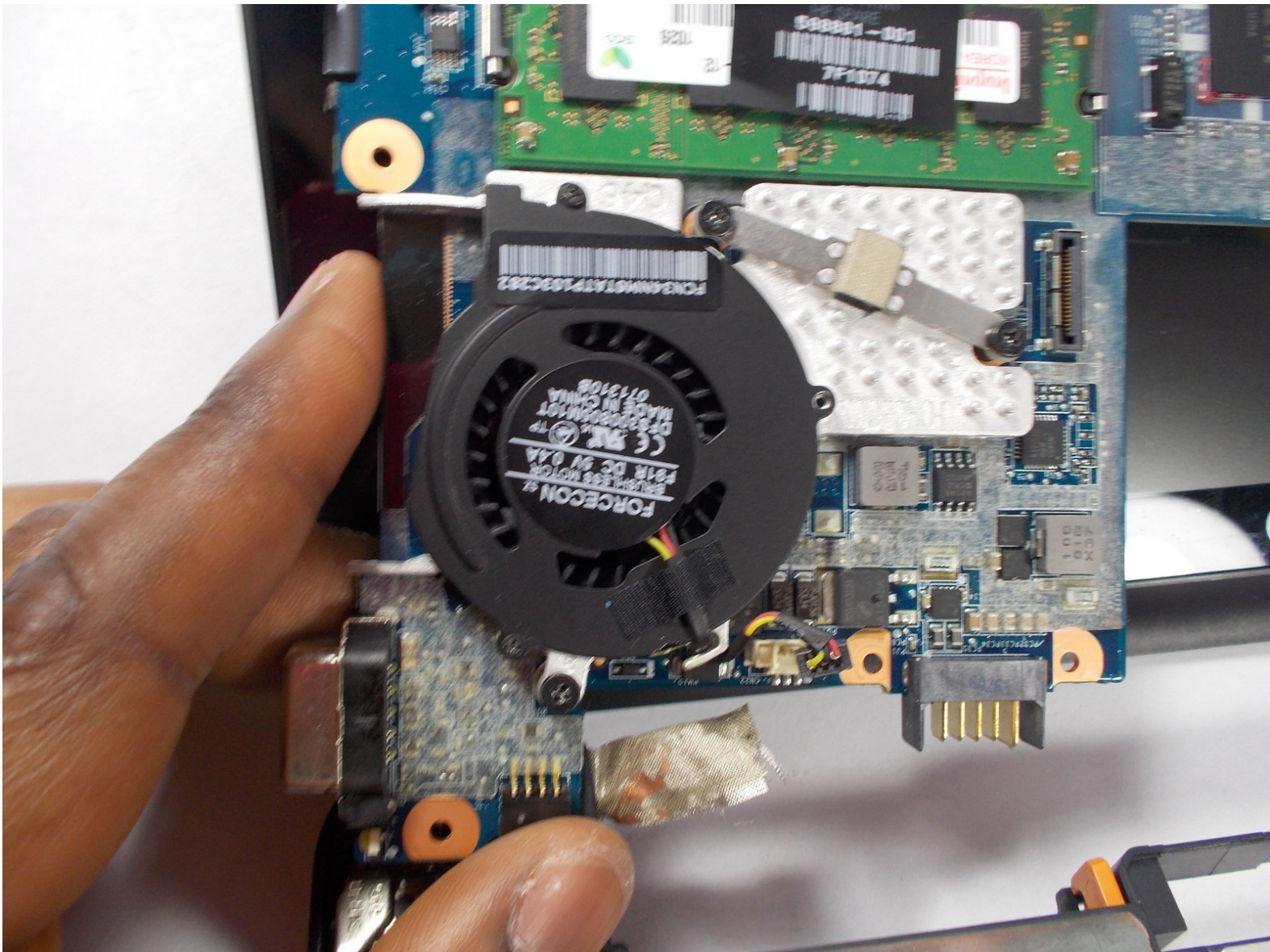




# HP Mini 210 Fan Replacement

This is a step by step on how to replace the fan on a HP Mini 210.

Written By: Irakoze Vincent



---

# INTRODUCTION

This guide will teach you how to perform a fan replacement on the HP Mini 210.

---

## TOOLS:

- [Tweezers](#) (1)
  - [Phillips #1 Screwdriver](#) (1)
  - [Spudger](#) (1)
  - [iFixit Opening Tools](#) (1)
-

## Step 1 — Battery



- i** Turn off and unplug the netbook before replacing the battery.

  - Hold the netbook top-side down with the lid closed.
  - Slide the plastic battery release latches towards the lock symbols.
- i** The left tab unlocks completely, but you will need to hold the right tab towards the lock symbol as you remove the battery.



## Step 2



- Slide the battery out from the netbook.

## Step 3 — Disassembling HP Mini 210 Back Case



- Turn the netbook to view its edge.
- Press both orange eject buttons simultaneously, and use a spudger to pry off the back case.

## Step 4



- If the back case does not separate from the netbook easily, use the spudger to pry off the back case by the edge near the battery compartment, and work your way to the sides. The case will then pivot along the front edge.

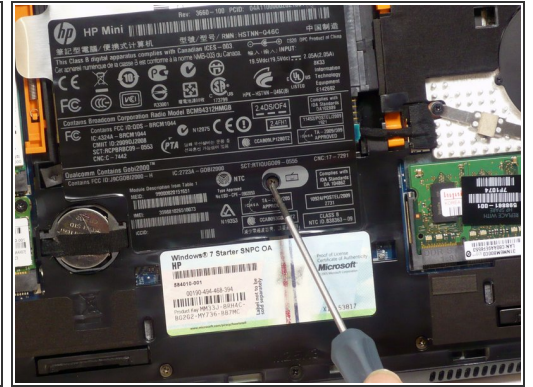
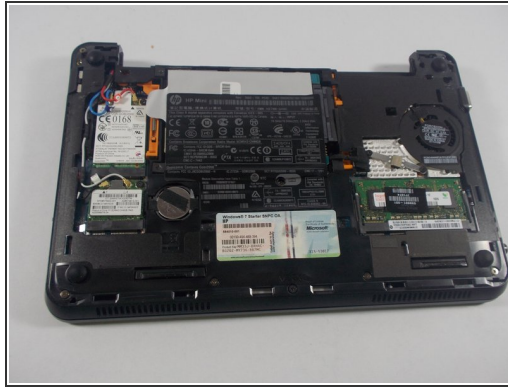
## Step 5



- Pull the back case off from the front edge.



## Step 6 — Keyboard



- Using a screwdriver, remove the three 6.6 mm screws highlighted with the red circles in the first picture above.

## Step 7




- Once you have removed the screws, flip the netbook over so that the keyboard is now facing upwards. Open the screen as far back as the netbook allows.
- Using a prying tool, lift upwards and remove the plastic casing that covers the spaces around the keys of the keyboard.




Be careful when removing the plastic casing.

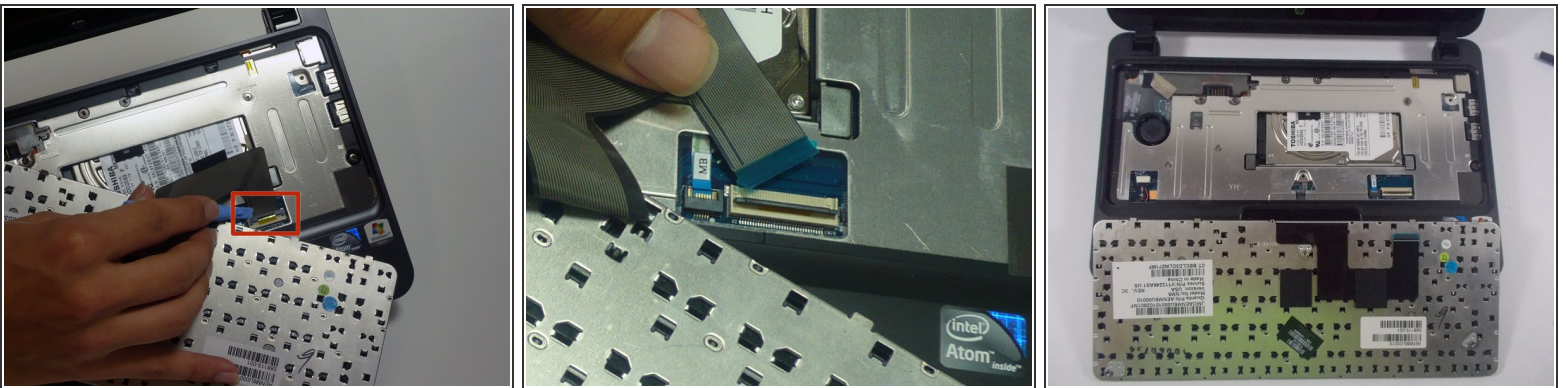
## Step 8




 After removing the plastic casing surrounding the keys, carefully lift the full keyboard from the netbook using a plastic opening tool.

 Do not yank the keyboard out. The keyboard is attached to the netbook through a ribbon cable, which needs to remain undamaged in order for the new keyboard to properly connect with the netbook.

## Step 9

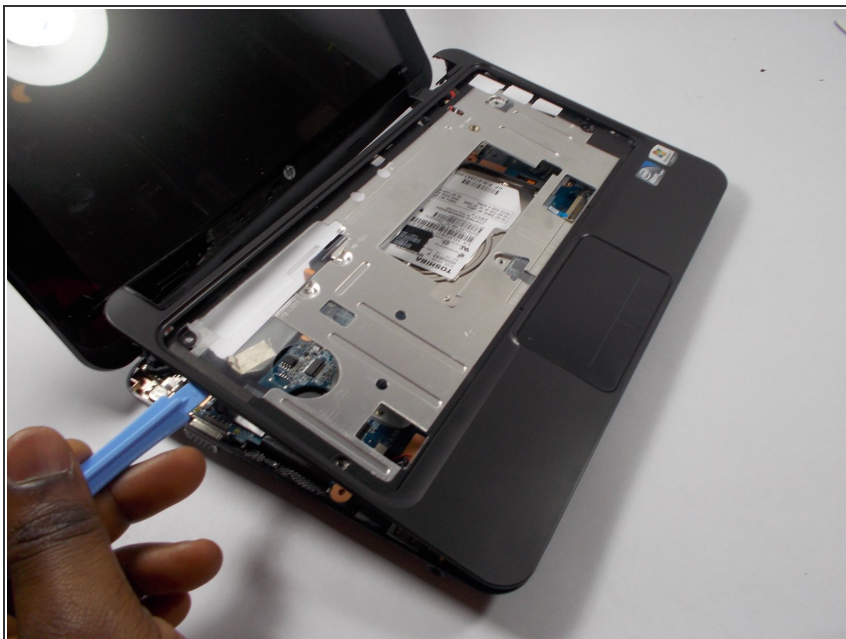


 Be very gentle with the ZIF connector! It is designed to be locked into the motherboard, so make sure you lift the retaining latch before attempting to disconnect it.

- Lift the latch on the ZIF (zero insertion-force) connector using a plastic opening tool. The ZIF connector is located on the motherboard and is connected to the keyboard through the ribbon cable.
- Disconnect the ribbon cable from the ZIF connector on the motherboard by lifting it up and out; this completely removes the keyboard.

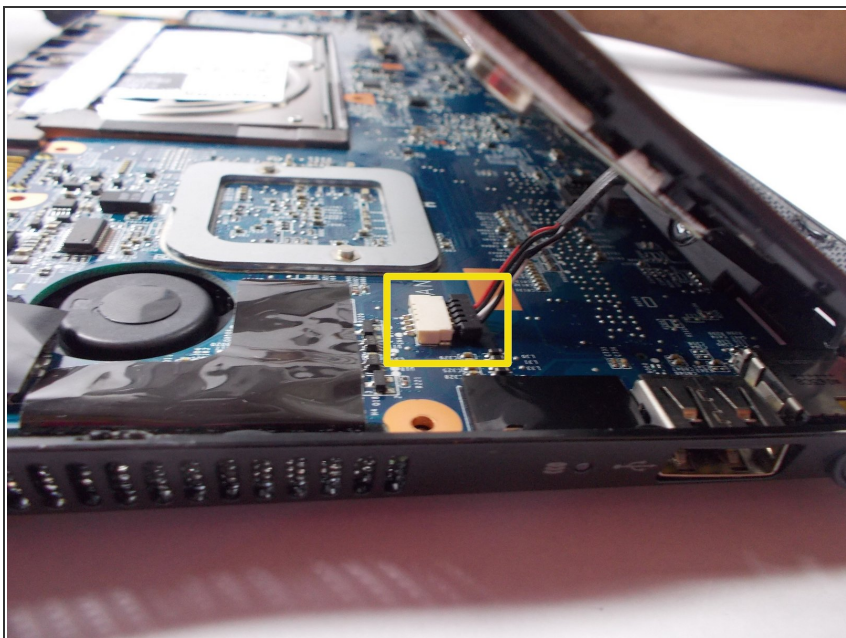


## Step 10 — Fan



- Use the spudger to peel the front black plastic plate from the rest of the case, starting at a corner and working your way around the entire case.

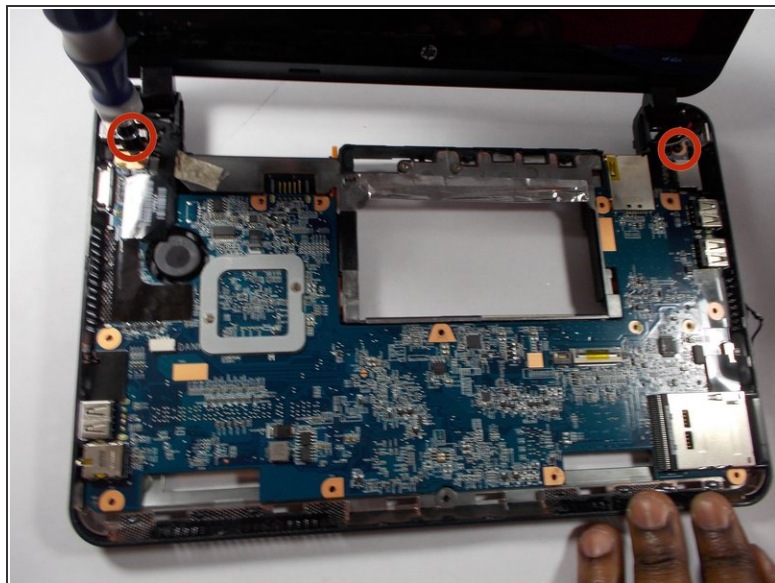
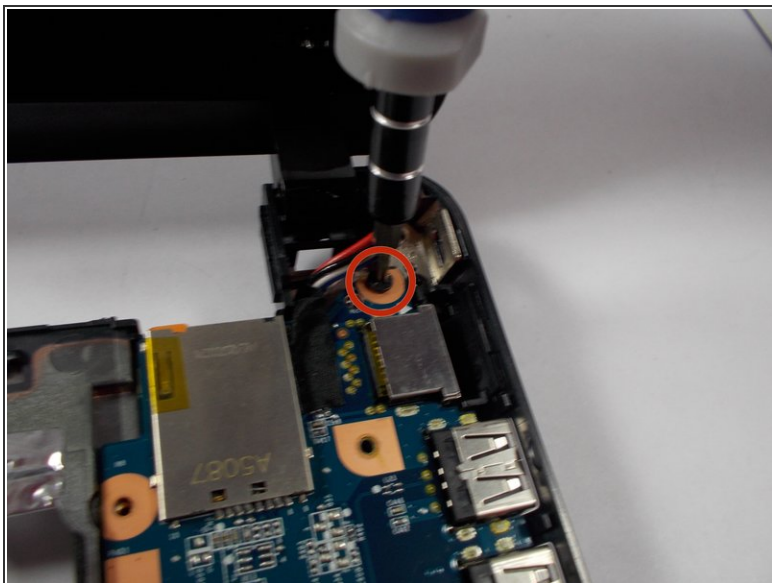
## Step 11



- Locate the cable that connects the trackpad to the motherboard and carefully remove it.

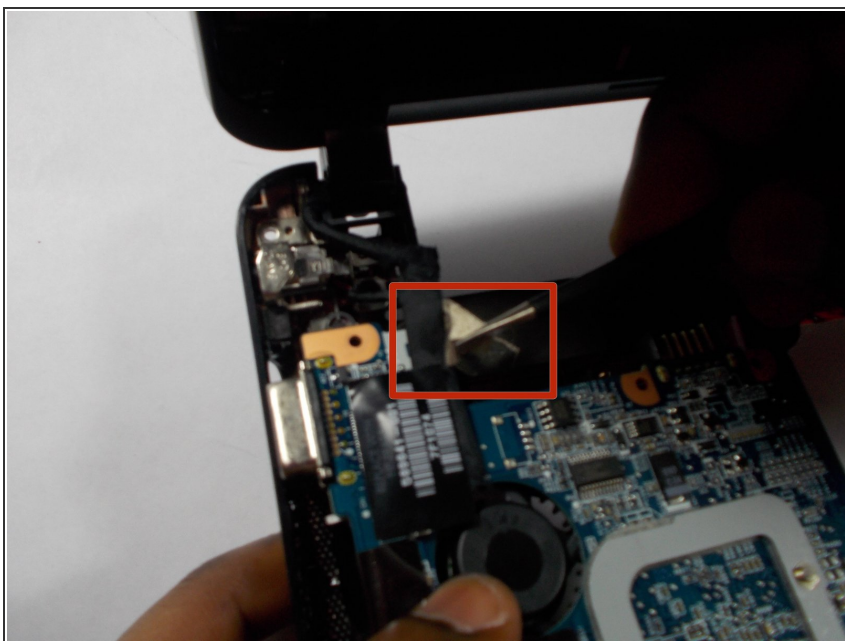


## Step 12



- Use a screwdriver to remove the 9.3 mm screws on top of the motherboard.

## Step 13



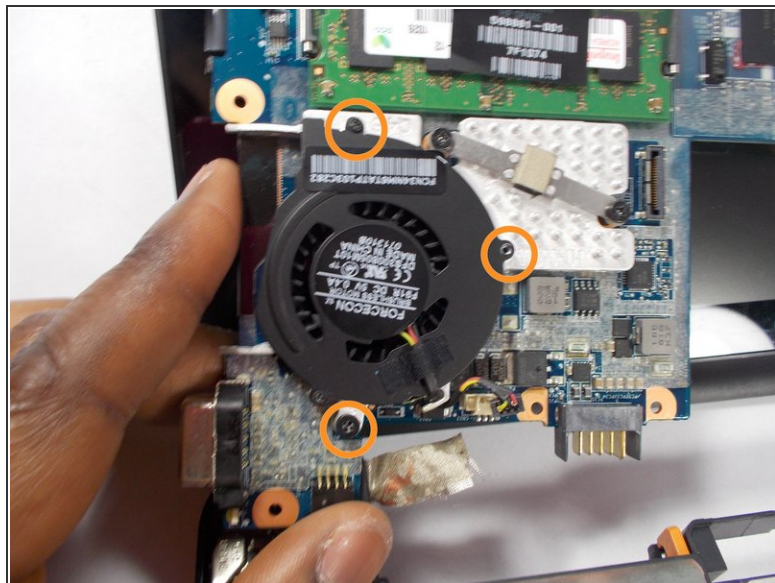
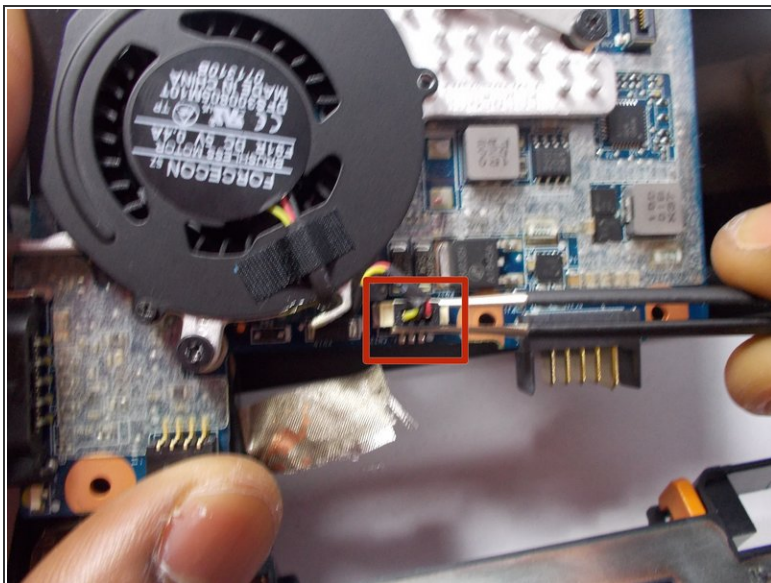
- Remove the gold tape that holds the motherboard.

## Step 14



- Use a spudger to carefully remove the motherboard.

## Step 15



- Flip over the motherboard to get to the fan.
- Carefully remove the cable that is attaches the fan to the motherboard.
- Remove the screws that hold in the fan.
- The fan is now able to be completely removed.

To reassemble your device, follow these instructions in reverse order.