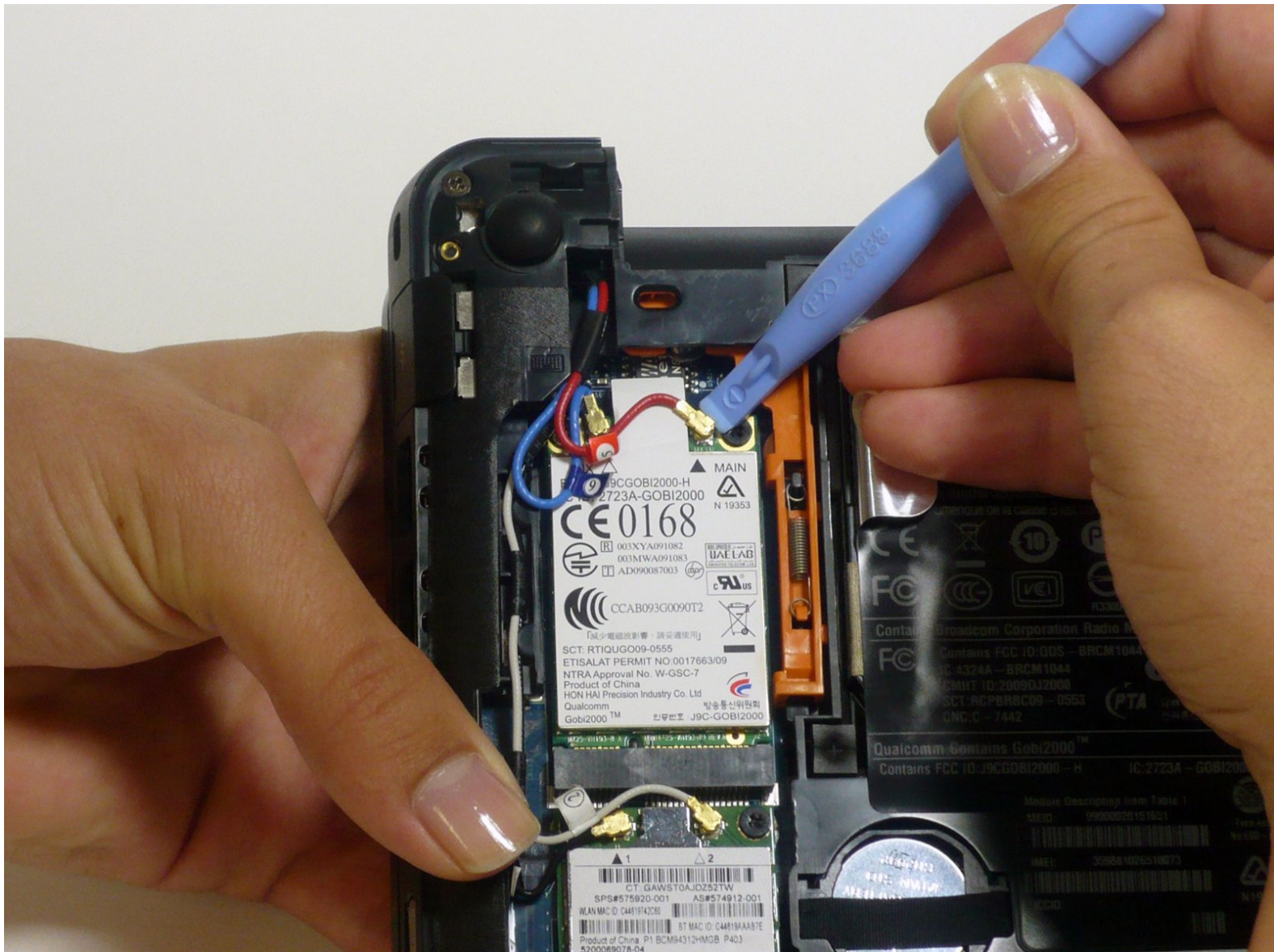




# HP Mini 210 Netbook WWAN Card Replacement

Replacing a WWAN (Wireless Wide Area Network) card enables you to connect to the internet via mobile broadband (subscription service required).

Written By: Heather Freed



This document was generated on 2019-12-09 11:21:17 AM (MST).

## INTRODUCTION

Replacing the WWAN (Wireless Wide Area Network) card is easy and straightforward.

WWAN connectivity allows a user with a netbook and a WWAN card to surf the web, check email, or connect to a virtual private network (VPN) from anywhere within the regional boundaries of cellular service.

The WWAN card in the HP Mini 210 uses a Mini PCIe interface, which is the standard on recent laptops. Please ensure you install an official HP verified WWAN card to prevent running into errors.



### TOOLS:

- [Phillips #00 Screwdriver](#) (1)
  - [Spudger](#) (1)
  - [iFixit Opening Tools](#) (1)
-

## Step 1 — WWAN Card



- ❗ Turn off and unplug the netbook before replacing the battery.
- Hold the netbook top-side down with the lid closed.
- Slide the plastic battery release latches towards the lock symbols.
- ❗ The left tab unlocks completely, but you will need to hold the right tab towards the lock symbol as you remove the battery.

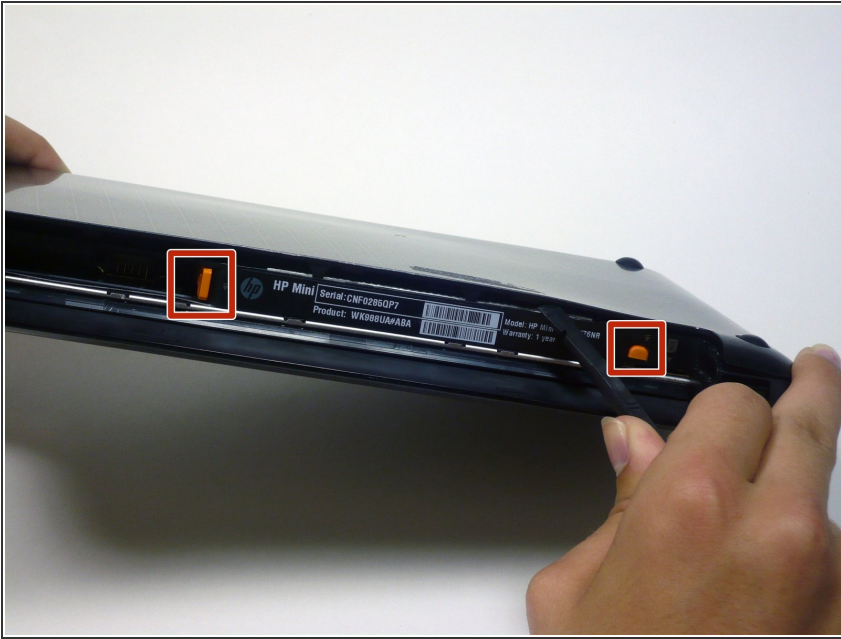
## Step 2



- Slide the battery out from the netbook.



### Step 3



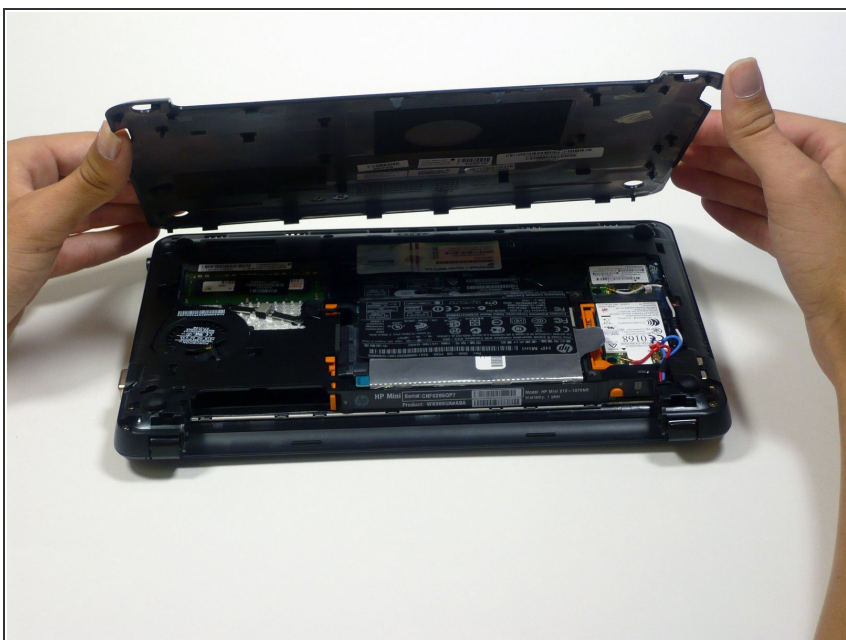
- Turn the netbook to view its edge.
- Press both orange eject buttons simultaneously, and use a spudger to pry off the back case.

## Step 4



- Use the spudger to pry off the back case by the edge near the battery compartment, and work your way to the sides. The case will then pivot along the front edge.

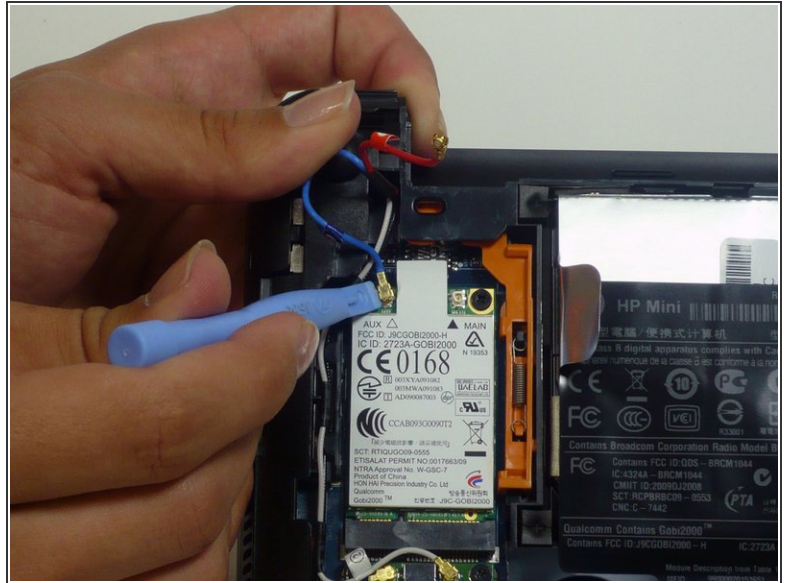
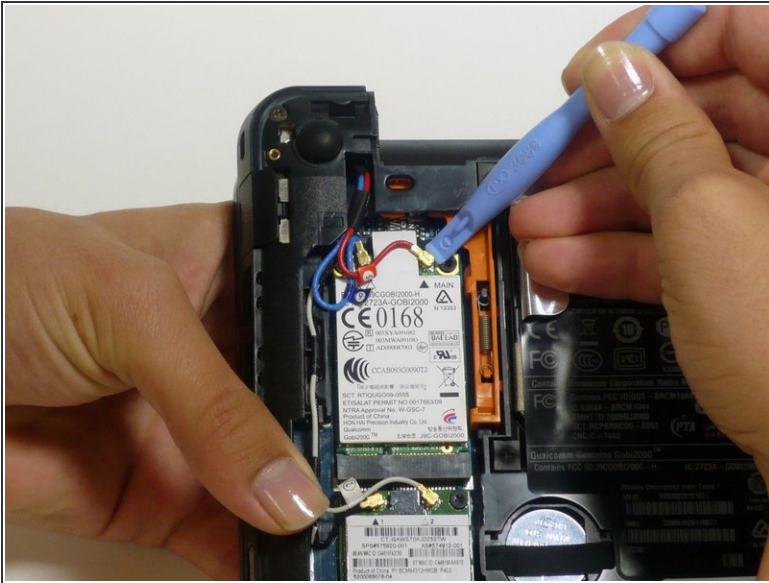
## Step 5



- Pull the back case off from the front edge.



## Step 6



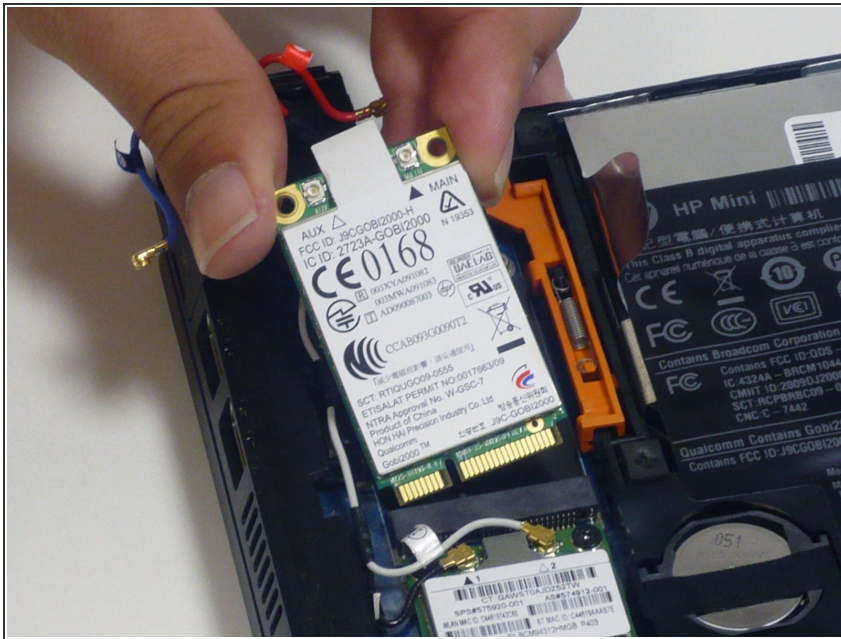
- Disconnect the two gold antenna cables from the WWAN card using a plastic opening tool.

## Step 7



- Use a Phillips #00 screwdriver to remove the two Phillips 2.0 and 3.0 mm screws that secure the WWAN to the system board.

## Step 8



- Remove the WWAN card by pulling the WWAN card out at an angle.

Install the new WWAN card and then to reassemble your device, follow these instructions in reverse order.