



HP Mini 210-2070NR Hard Drive Replacement

This a step by step guide showing how to replace your hard drive.

Written By: Alek Linquist



INTRODUCTION

Use this guide to remove and install a new hard drive.



TOOLS:

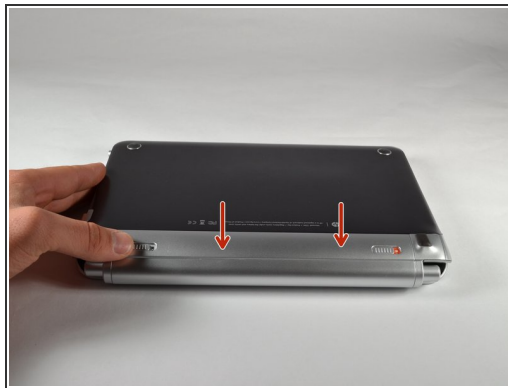
- [Phillips #00 Screwdriver](#) (1)
-

Step 1 — Battery and Service Access Cover



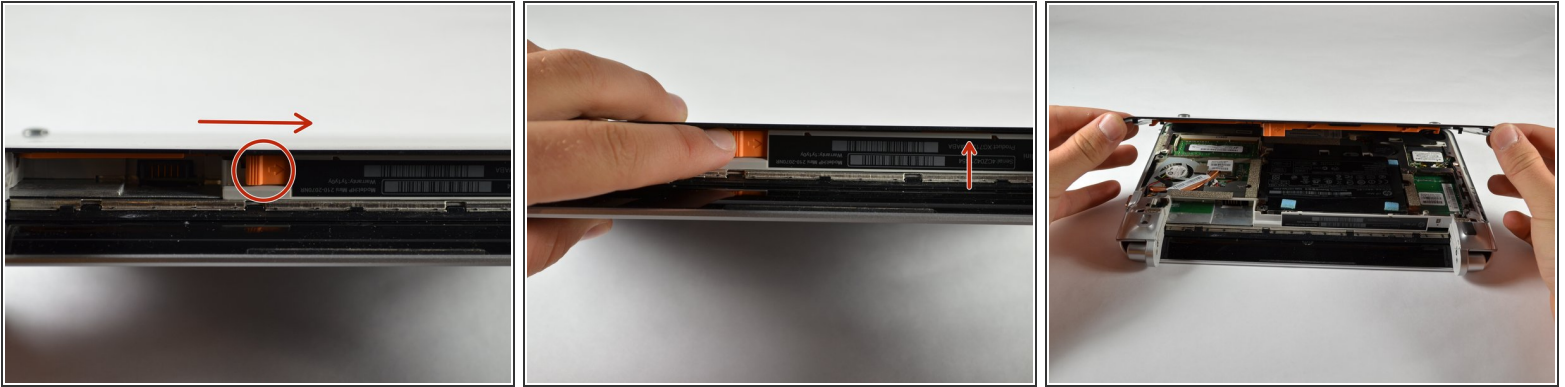
- i** Before beginning, make sure that your computer is turned off and all external power cords are disconnected.
- Close the laptop and turn it over, so that the underside is up and the silver battery bay is facing towards you.

Step 2



- Locate the battery locking latch on the bottom right corner and slide it inward to unlock the battery.
- Locate the battery release latch on the bottom left and slide it inward.
- Pull the battery towards you to remove it from the laptop.

Step 3



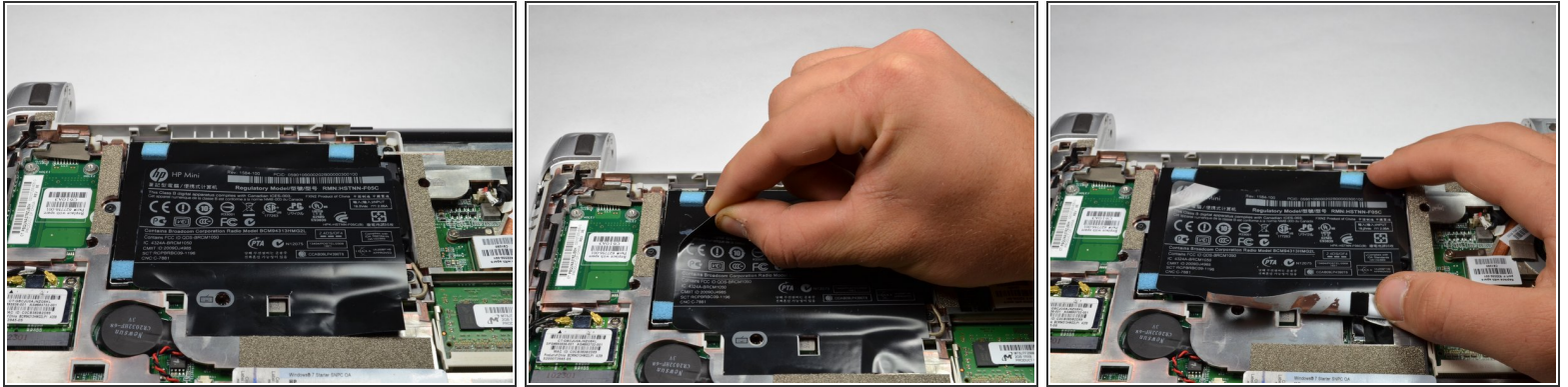
- Locate the service access cover release lever and slide it to the right.
- While holding the lever to the right, lift up the laptop's bottom cover gently and remove the cover from the laptop.

Step 4



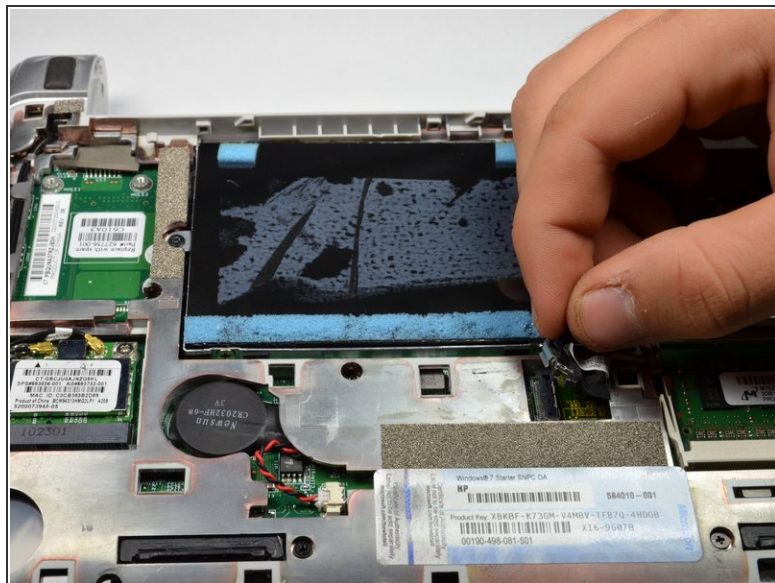
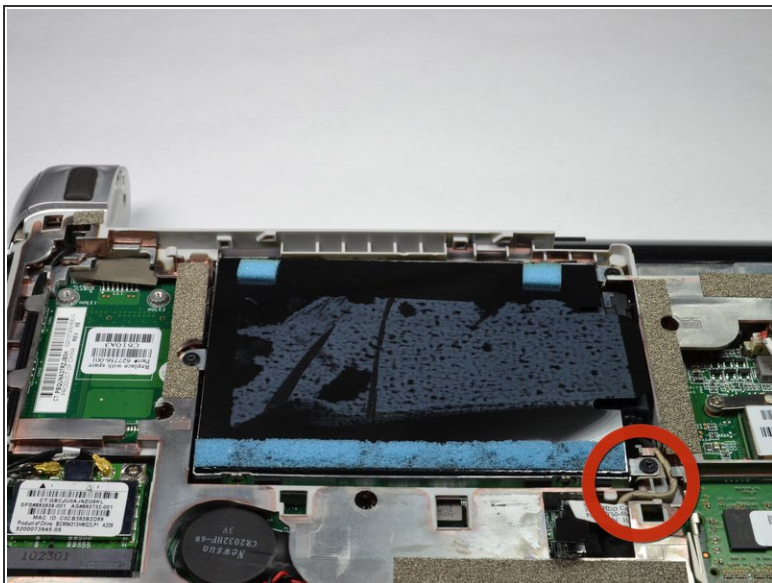
- If you are performing any installations after the battery, orient the computer so that the underside is up, and the battery port is facing away from you.

Step 5 — Hard Drive



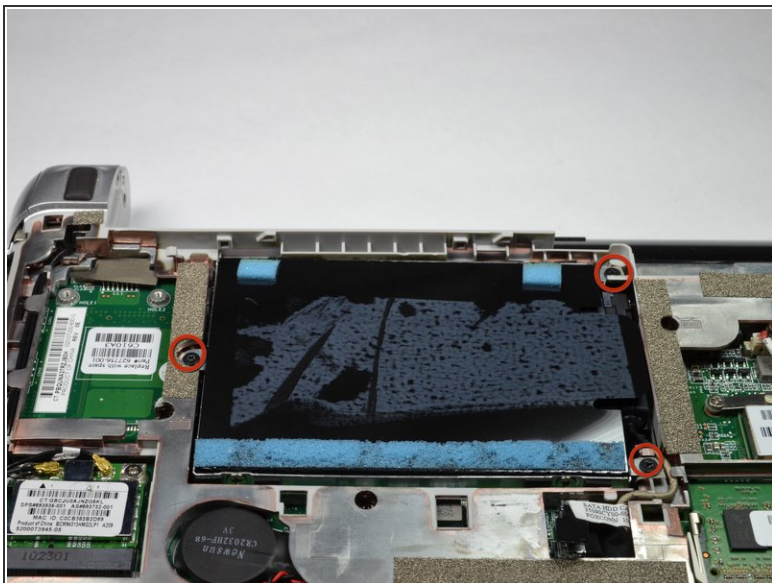
- Locate the HP product sticker, a black square sticker covered with product details, at the top of the computer.
- Pull off the HP product sticker, starting at the top right corner and pulling diagonally down towards the bottom right.
- ⚠ Be careful not to pull up the black hard drive plastic connector with the sticker. Also, removing this sticker will void your warranty.
- Remove the HP product sticker.

Step 6



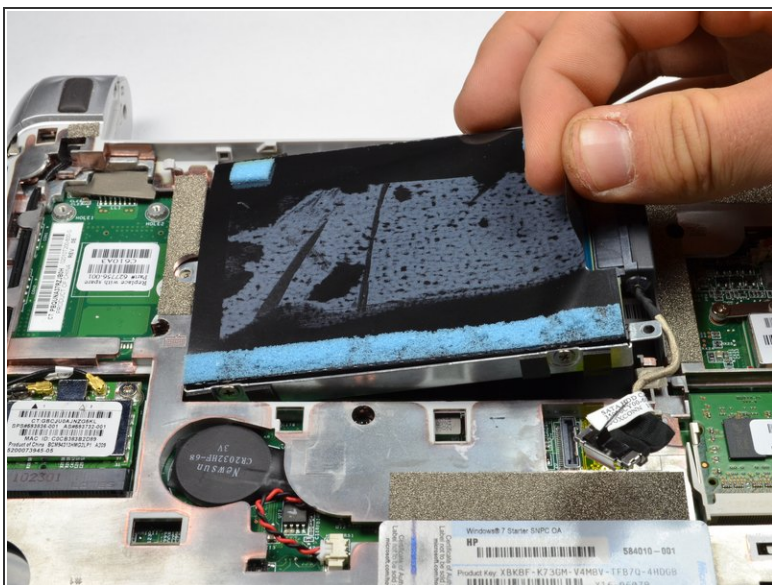
- Locate the hard drive, where the HP Product sticker used to be.
- Locate the hard drive cable, connected to the hard drive.
- Disconnect the hard drive cable by gently pulling upward.

Step 7



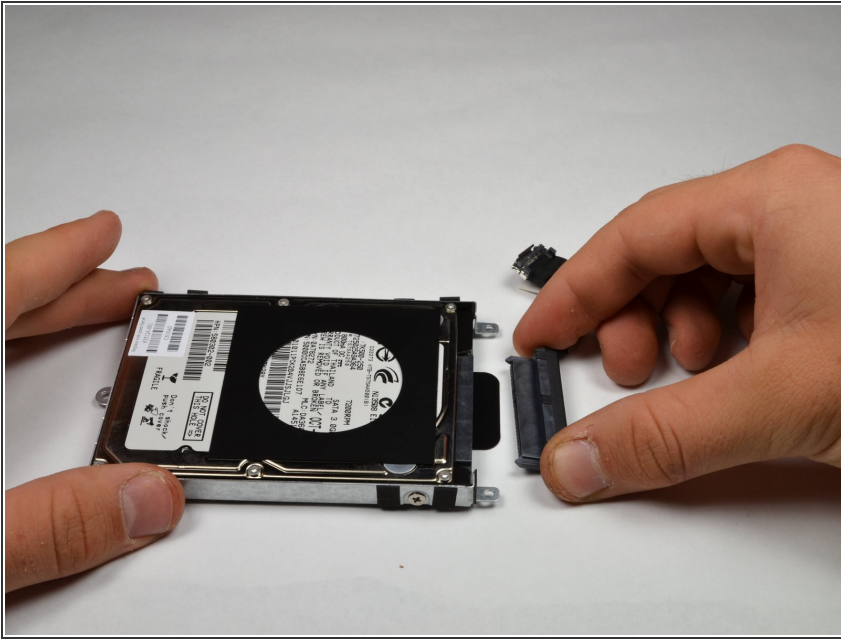
- Using a 00 Phillips screwdriver, unscrew and remove the three 2.0 x 4.0 Philips screws holding the hard drive in place.

Step 8



- Use the Mylar Tab located on the right side of the hard drive to pry up the hard drive.
- Remove the hard drive.

Step 9



- Lay the hard drive down with the underside facing up.
- Pull and remove the hard drive pin connector from the hard drive.

To reassemble your device, follow these instructions in reverse order.