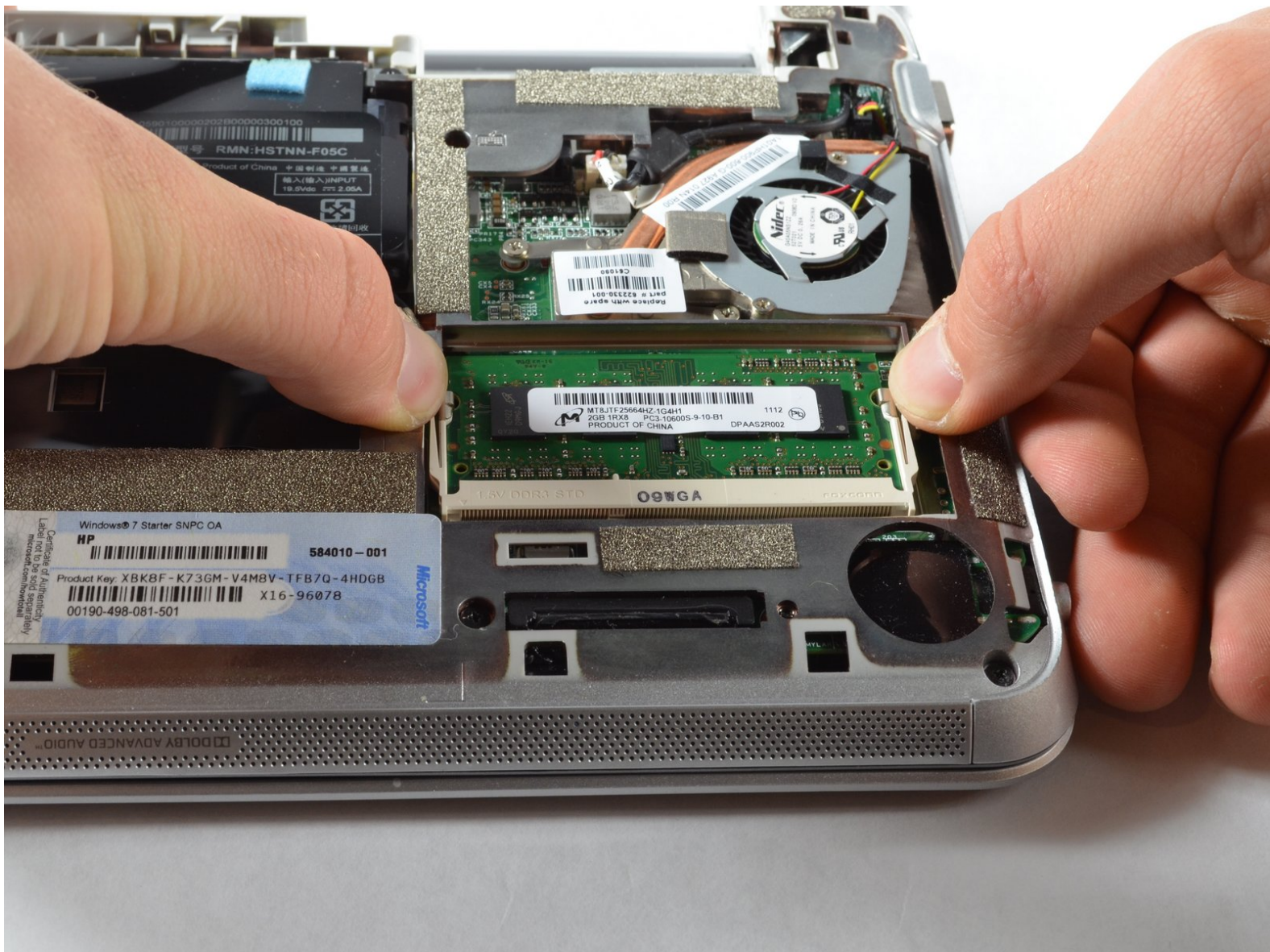




HP Mini 210-2070NR RAM Replacement

This is a step by step guide showing how to replace the RAM (Random Access Memory) Card. for the HP Mini 210-2070NR.

Written By: Sean Kuster



INTRODUCTION

Use this guide to replace your RAM Card. Replacing your RAM card for one of higher capacity will allow your system to perform better.



PARTS:

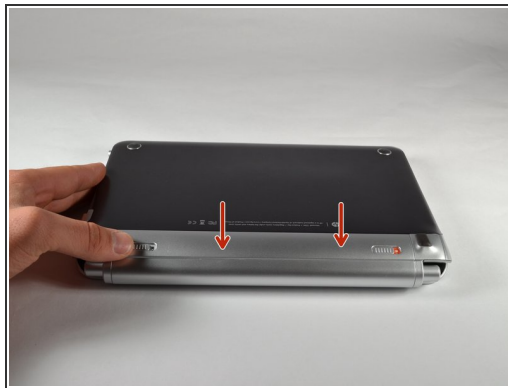
- [PC3-10600 2 GB RAM Chip](#) (1)
-

Step 1 — Battery and Service Access Cover



- i** Before beginning, make sure that your computer is turned off and all external power cords are disconnected.
- Close the laptop and turn it over, so that the underside is up and the silver battery bay is facing towards you.

Step 2



- Locate the battery locking latch on the bottom right corner and slide it inward to unlock the battery.
- Locate the battery release latch on the bottom left and slide it inward.
- Pull the battery towards you to remove it from the laptop.

Step 3



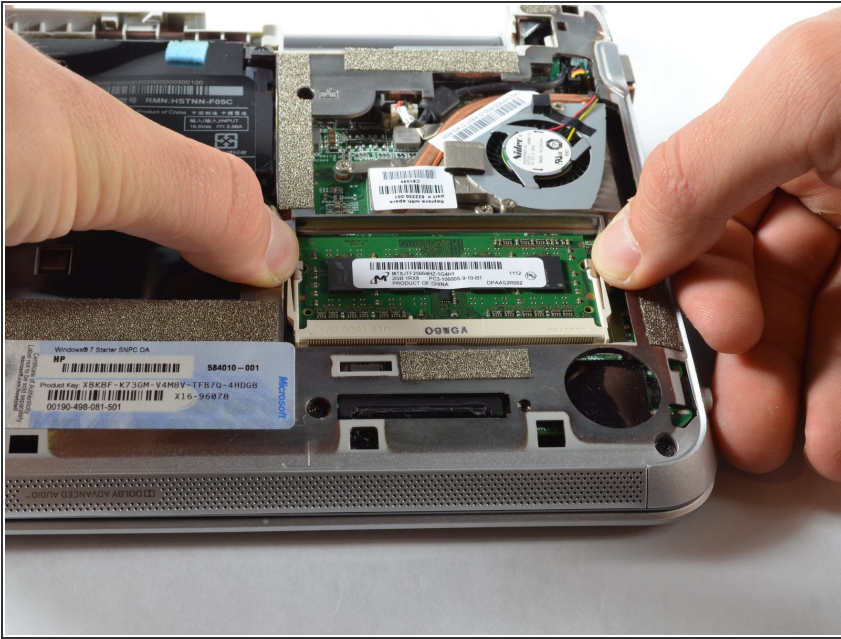
- Locate the service access cover release lever and slide it to the right.
- While holding the lever to the right, lift up the laptop's bottom cover gently and remove the cover from the laptop.

Step 4



- If you are performing any installations after the battery, orient the computer so that the underside is up, and the battery port is facing away from you.

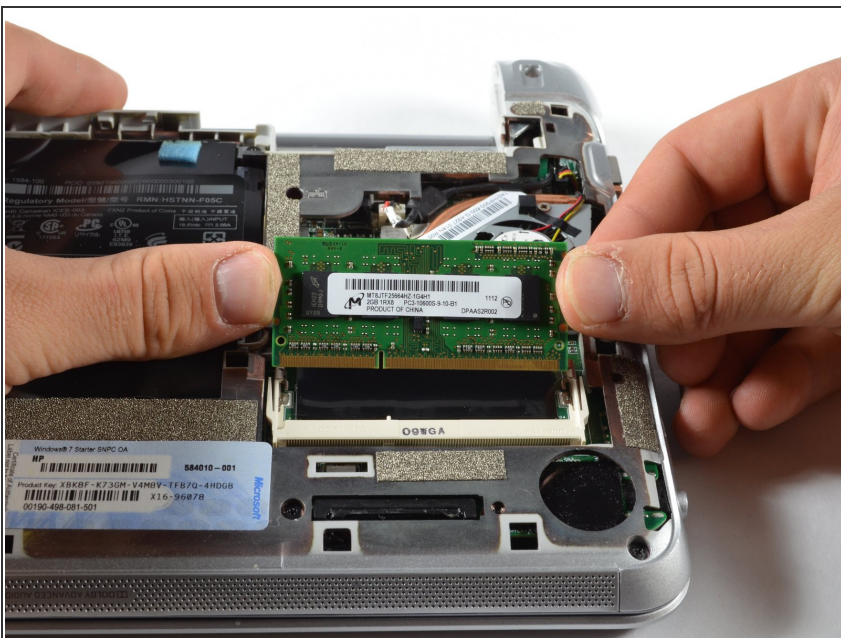
Step 5 — RAM



- Using your fingers, pull the two white clips (tabs) on both sides of the RAM away from each other. Keep pulling the clips until the RAM pops up

⚠ Hold the RAM on the edges only. Touching the components on the RAM might damage it.

Step 6



- Grab the edges of the module and gently lift it from the slot.
- ⓘ RAM Cards are designed with a notch on the surface to prevent incorrect insertion into the memory module slot.

To reassemble your device, follow these instructions in reverse order.