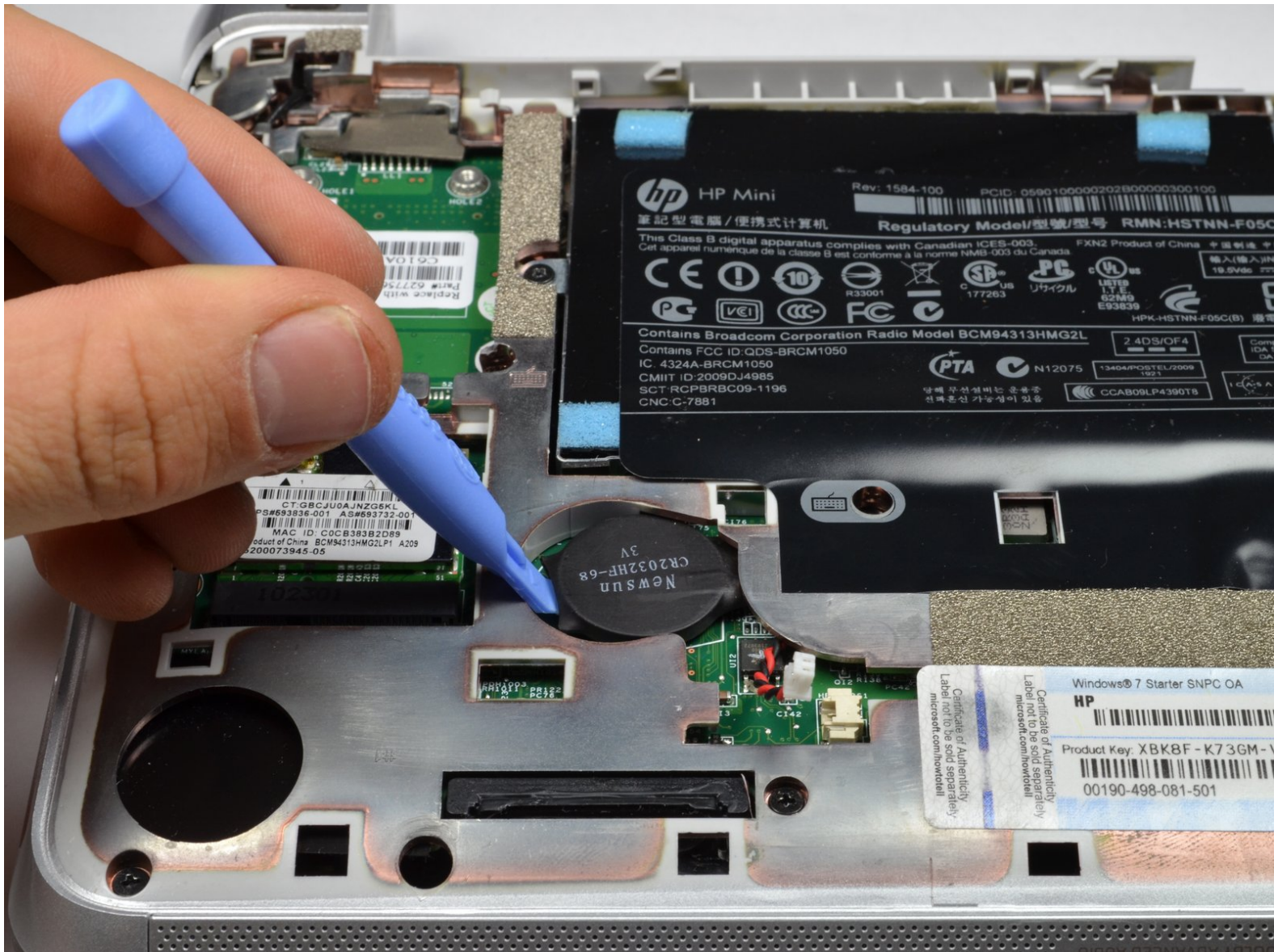




# HP Mini 210-2070NR RTC Battery Replacement

This is a step by step guide showing how to replace the RTC Battery.

Written By: Alek Linquist



---

## INTRODUCTION

The Real Time Clock (RTC) Battery helps to retain important BIOS settings such as system time, date, and BIOS configuration while the laptop is turned off or when the main battery is removed.

---



### TOOLS:

- [iFixit Opening Tools](#) (1)
-

## Step 1 — Battery and Service Access Cover



- i** Before beginning, make sure that your computer is turned off and all external power cords are disconnected.
- Close the laptop and turn it over, so that the underside is up and the silver battery bay is facing towards you.

## Step 2



- Locate the battery locking latch on the bottom right corner and slide it inward to unlock the battery.
- Locate the battery release latch on the bottom left and slide it inward.
- Pull the battery towards you to remove it from the laptop.



## Step 3



- Locate the service access cover release lever and slide it to the right.
- While holding the lever to the right, lift up the laptop's bottom cover gently and remove the cover from the laptop.

## Step 4



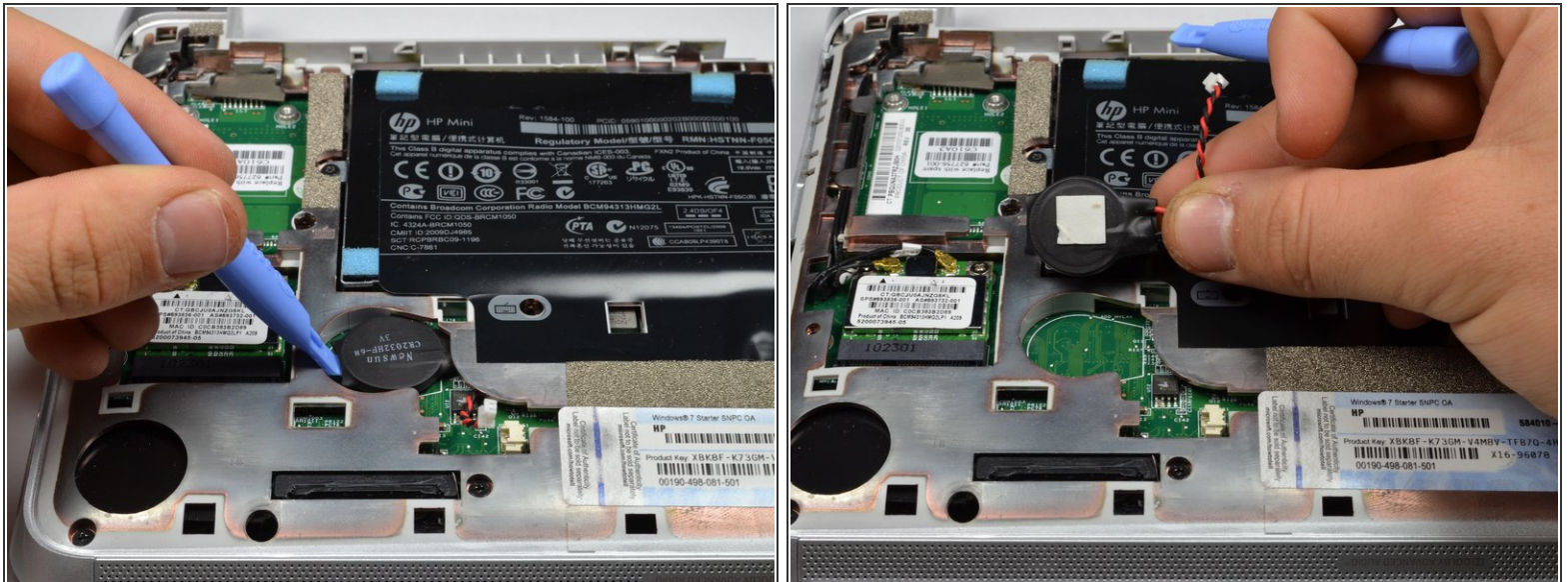
- If you are performing any installations after the battery, orient the computer so that the underside is up, and the battery port is facing away from you.

## Step 5 — RTC Battery



- Locate the RTC battery, a thin cylinder near the bottom left corner of the computer.
- Locate the RTC Battery Cable, connected to the RTC Battery.
- Pull the RTC battery cable to to the left, out of its socket.

## Step 6



- Gently pry the RTC battery upwards with the plastic opening tool.
  - Remove RTC battery by lifting it away from the computer.
- i** The RTC battery is attached with double sided tape.

To reassemble your device, follow these instructions in reverse order.