



# HP Mini 210-2070NR Wi-Fi Card (WLAN Module) Replacement

This guide will show you step-by-step how to remove and replace your Wi-Fi card.

Written By: Taylor



---

## INTRODUCTION

The Wi-Fi Card is also called a WLAN Module, and is what connects you to the internet without needing to be attached to a cord.

---

### TOOLS:

- [Phillips #00 Screwdriver](#) (1)
-

## Step 1 — Battery and Service Access Cover



- i** Before beginning, make sure that your computer is turned off and all external power cords are disconnected.
- Close the laptop and turn it over, so that the underside is up and the silver battery bay is facing towards you.

## Step 2



- Locate the battery locking latch on the bottom right corner and slide it inward to unlock the battery.
- Locate the battery release latch on the bottom left and slide it inward.
- Pull the battery towards you to remove it from the laptop.

### Step 3



- Locate the service access cover release lever and slide it to the right.
- While holding the lever to the right, lift up the laptop's bottom cover gently and remove the cover from the laptop.

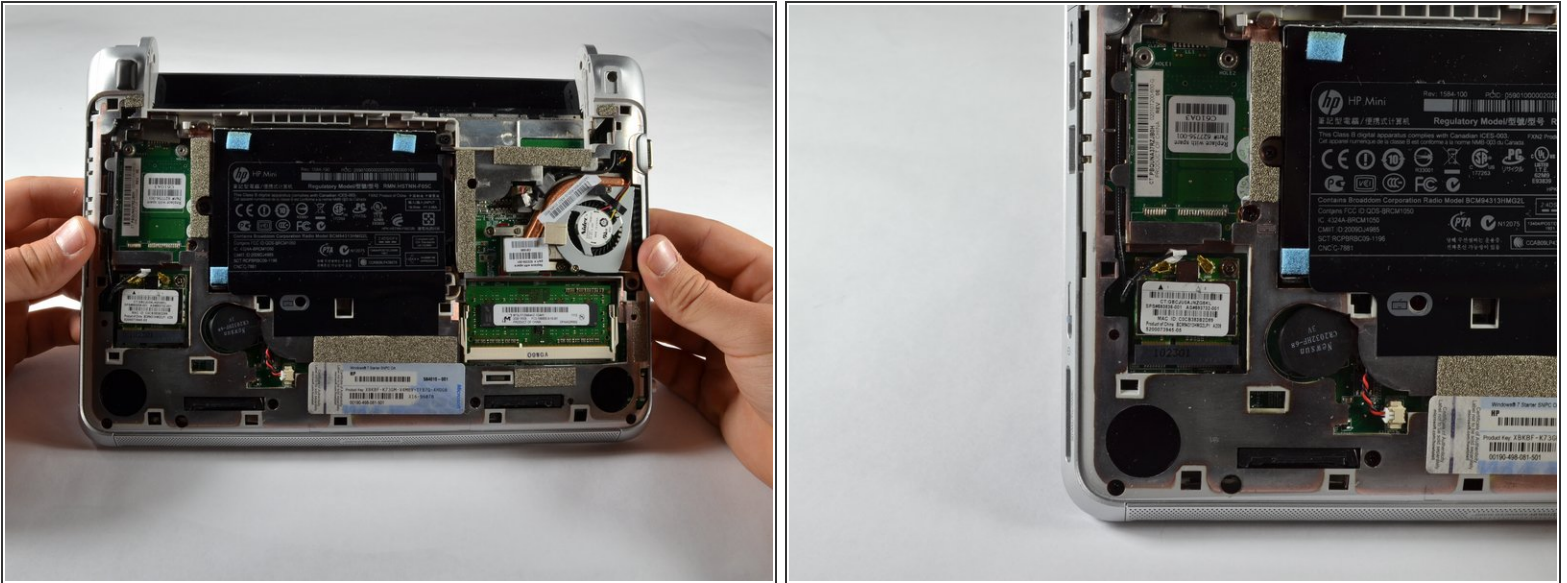
### Step 4



- If you are performing any installations after the battery, orient the computer so that the underside is up, and the battery port is facing away from you.



## Step 5 — Wi-Fi Card (WLAN Module)



- Locate the Wi-Fi Card (WLAN Module), near the computer's bottom left corner.

## Step 6



- Disconnect the two cables from the Wi-Fi card by gently lifting them away from the card.
- i* There should be two black cables, one labeled with a white sticker, connected to the module.

## Step 7



- Using a 00 Phillips screwdriver, unscrew and remove the two 2.0 x 3.0 Phillips screws securing the Wi-Fi card.
- ⓘ The card should tilt up away from the laptop at an angle after removing the screws.

## Step 8



- Remove the Wi-Fi card by gently pulling it out of its slot at an angle.
- ⚠ Be sure to pull gently and at an angle away from you. If the card is pulled straight up, there is a chance it could break or bend.

To reassemble your device, follow these instructions in reverse order.