



HP Mobile Thin Client mt41 Portal Replacement

This guide will show you how to remove the charging port.

Written By: Raul Rodriguez

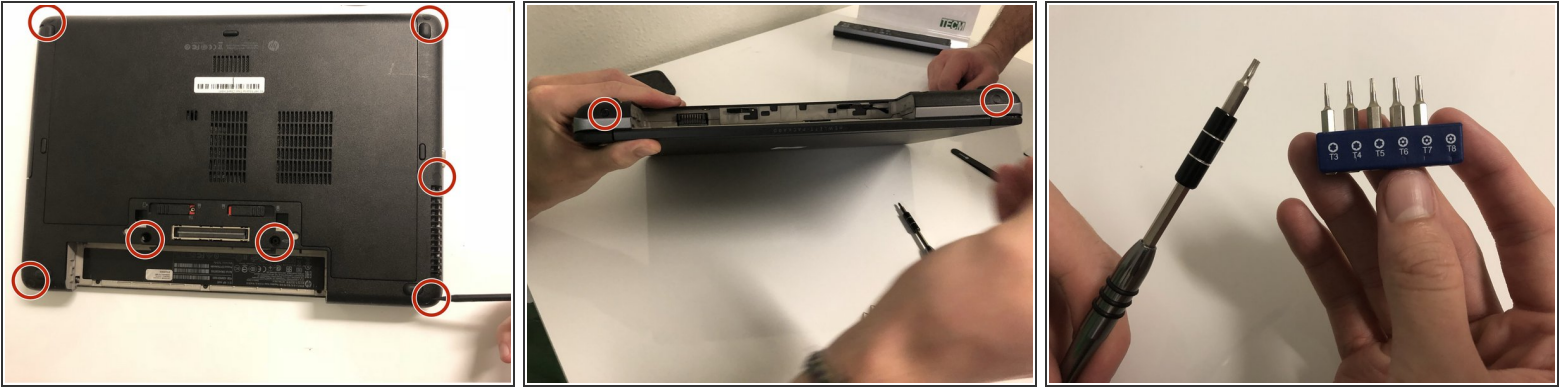




TOOLS:

- [iFixit Opening Tools](#) (1)
 - [T5 Torx Screwdriver](#) (1)
 - [Spudger](#) (1)
 - [Pro Tech Toolkit](#) (1)
-

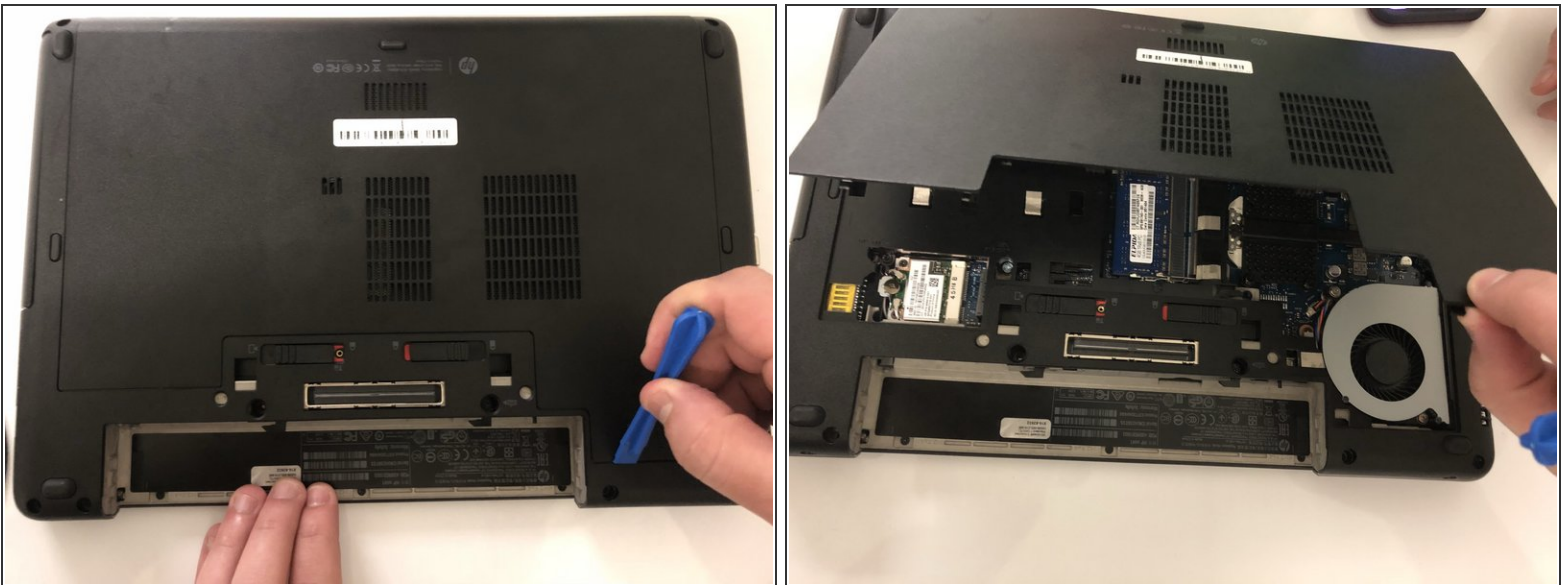
Step 1 — Back Cover



- Locate the screws highlighted to remove.

- ⓘ We recommend removing the battery first. Refer to the "Battery Replacement" guide to learn how to remove the battery.

Step 2



- Remove the middle back lid shown in the image.

- ⓘ May require a bit of force. If it is not coming out try the other side.

Step 3



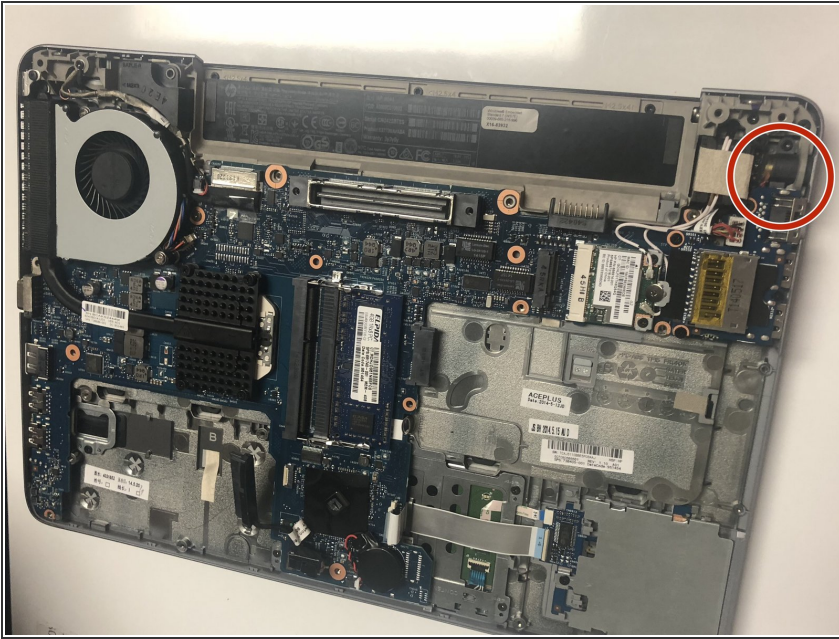
- Go around the edges with a special tool to pop lid out of place.

Step 4



- Once all corners are popped out of place lift the cover up slowly.
- ⓘ Lifting the lid should not require much force.

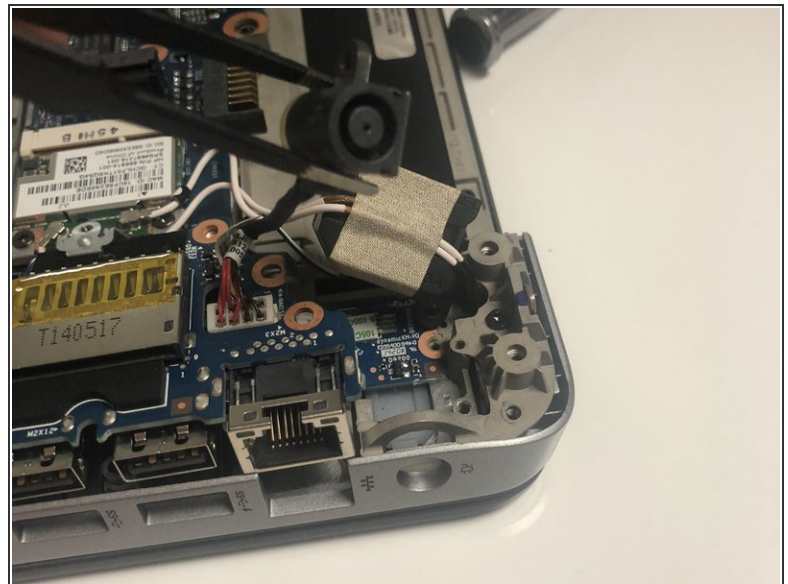
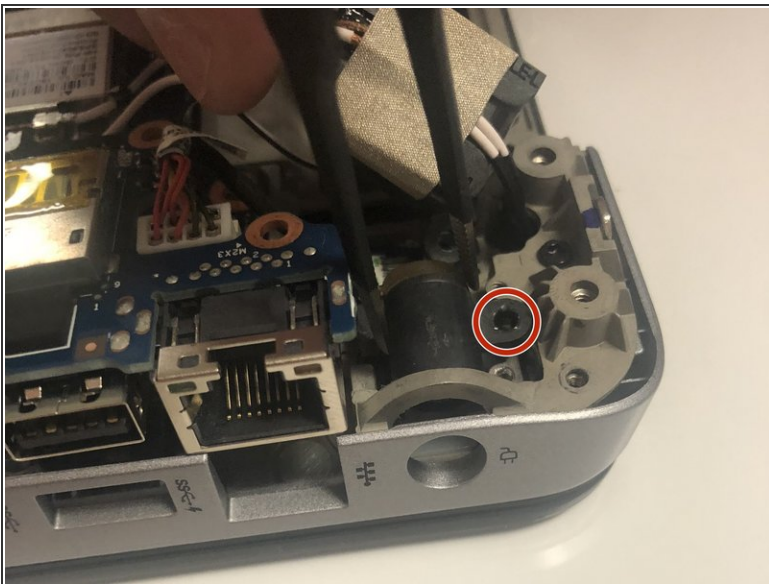
Step 5 — Charging port



- Locate the battery port.

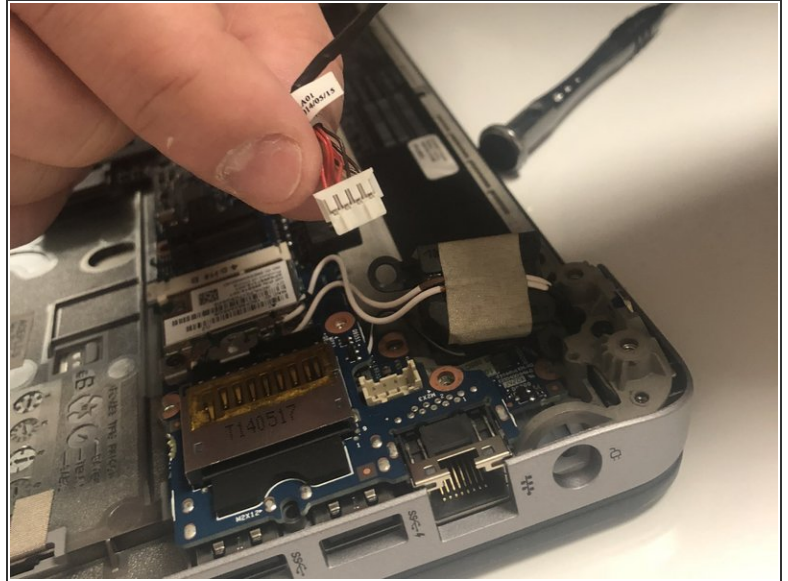
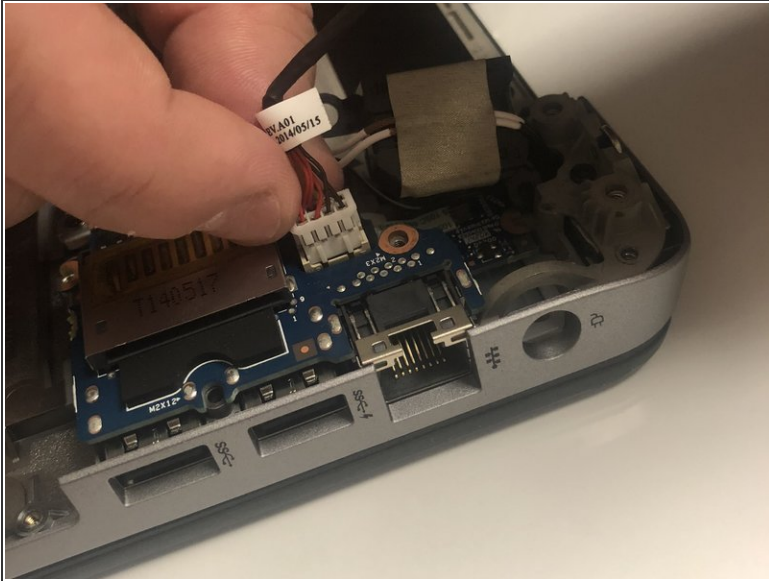
i refer to the "Lower case disassembly" guide to show you how to safely remove the back of the laptop.

Step 6



- Remove the screw next to the battery port.
- Gently pull out the charging port.

Step 7



- Unplug the connector shown in the image. This should not require much force.

To reassemble your device, follow these instructions in reverse order.