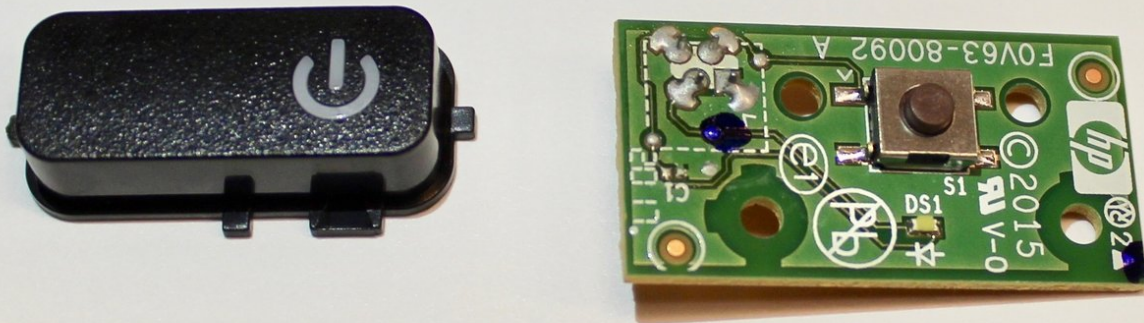




# HP OfficeJet 4650 Power Button Replacement

This guide outlines the necessary steps to replace the HP OfficeJet 4650's power button.

Written By: Stephanie Carpintero



---

## INTRODUCTION

The power button is what allows the printer to turn on. If the power button is malfunctioning, the HP OfficeJet 4650 will not function. This guide will show you how to replace the power button.

---



### TOOLS:

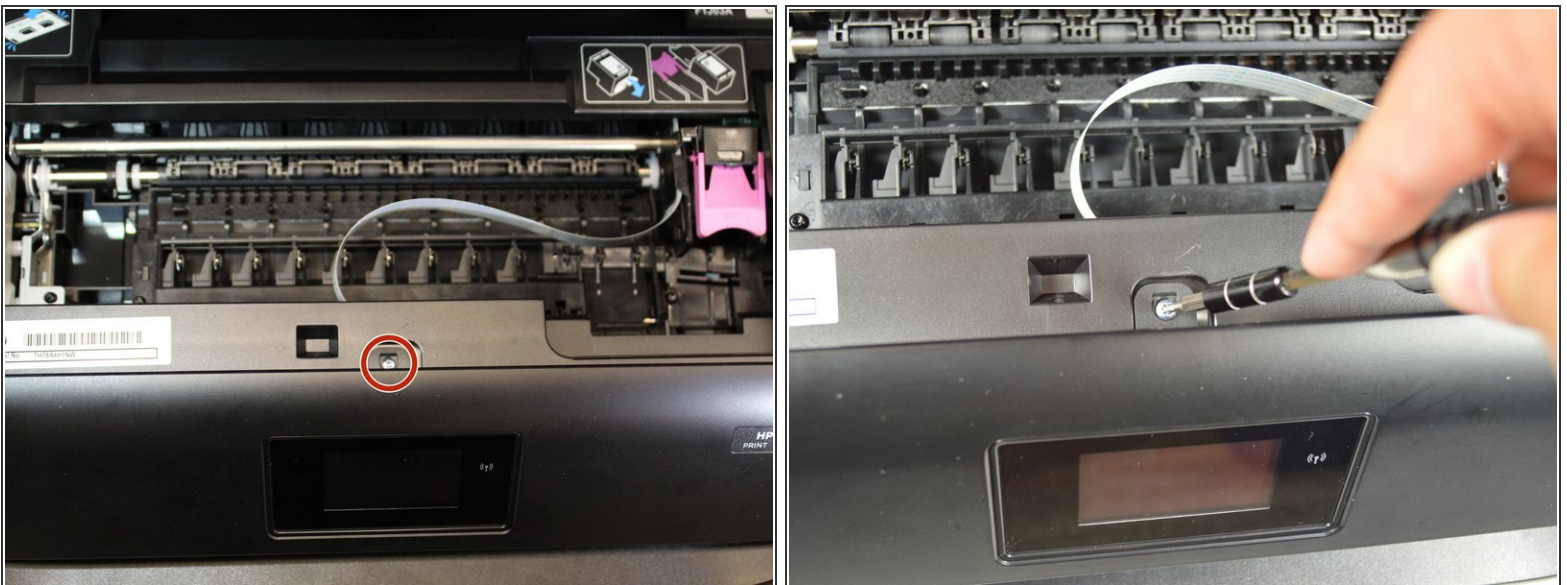
- [T6 Torx Screwdriver](#) (1)
-

## Step 1 — Power Button



- Open the cartridge access door by putting one hand on the grooves of each side and pulling up.

## Step 2



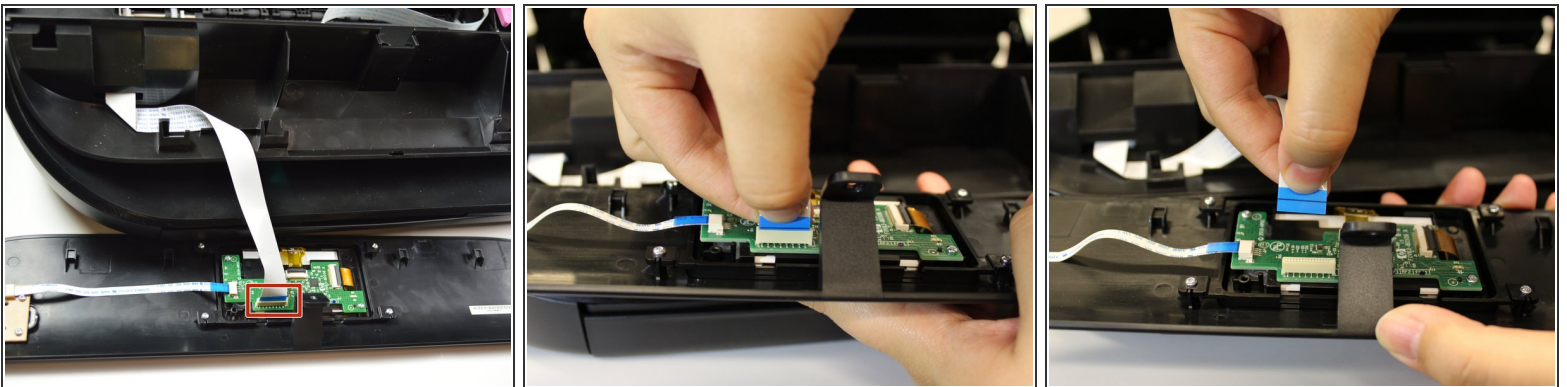
- Using the 2.0 mm hex screwdriver, remove the 14 mm hex screw that binds the front cover to the printer body by turning the screw counterclockwise.

## Step 3



- Release the front panel from its internal hooks by applying a little force and sliding the front panel to the right.
- Push the panel upward to remove it from the printer.
- ❗ There is a connector attached to the back of the panel. Flip the front cover towards you gently and proceed to the next step.

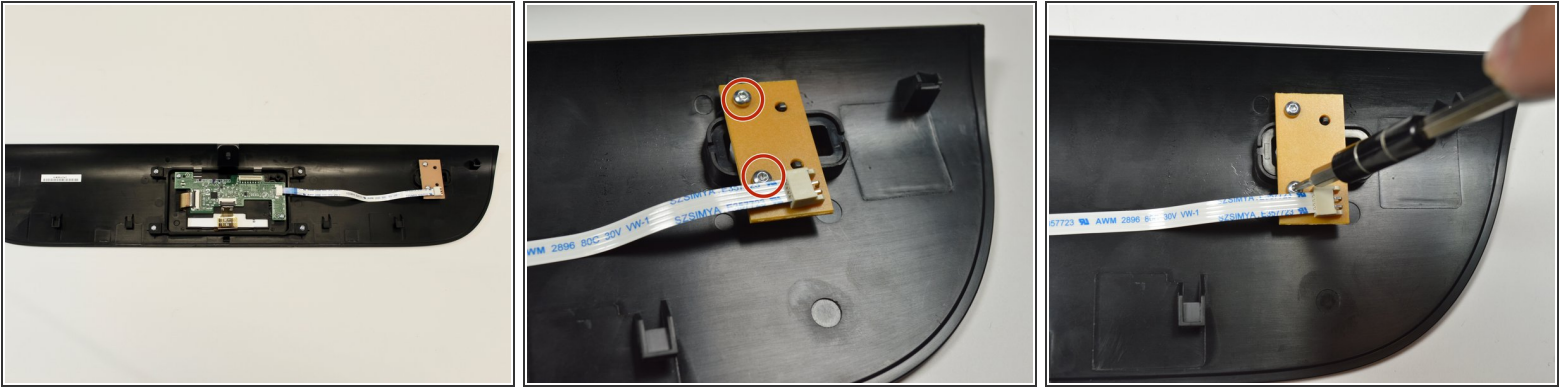
## Step 4



- Remove the connector that is attached to the screen's circuit board by pinching the blue part of the connector with two fingers and pulling it away from the circuit board.

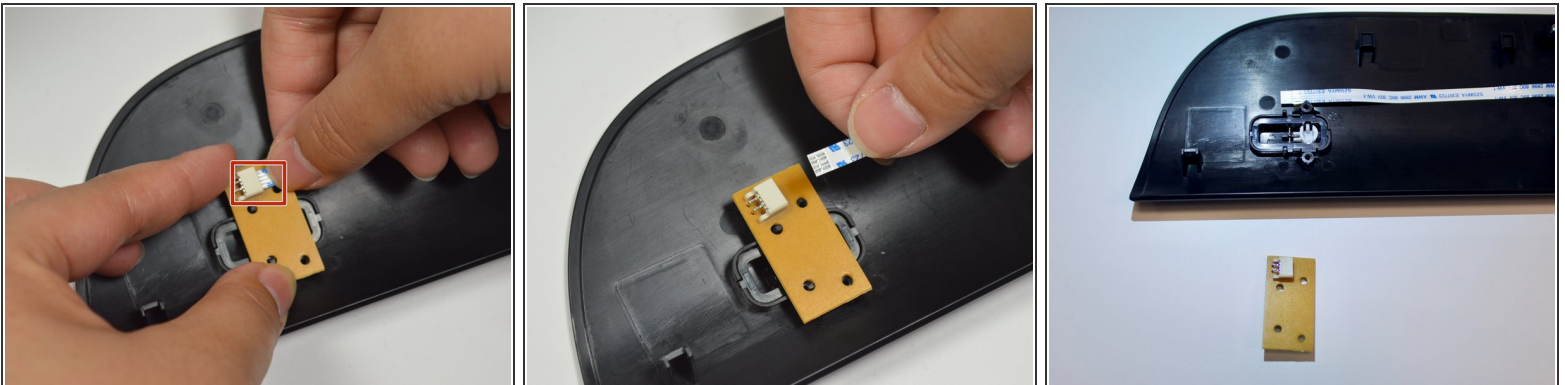


## Step 5



- Using the Torx T6 hex screwdriver, remove the 7.0mm screw that binds the front cover to the printer body by turning the screw counterclockwise.

## Step 6



- Remove the connector that is attached to the screen's circuit board by pinching the blue part of the connector with two fingers and pulling it away from button circuit board.

## Step 7



- Pop the button off from the black cover by using your finger tip to bring it up.

To reassemble your device, follow these instructions in reverse order.