



HP OfficeJet Pro 8000 Teardown

A look at the innards of the HP Officejet Pro 8000.

Written By: cf8geek



INTRODUCTION

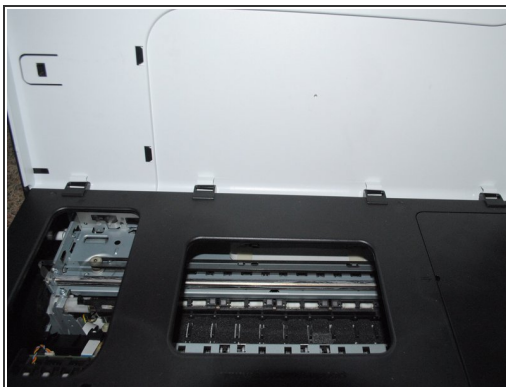
I just went along, tearing it apart. Pictures are of what I found, along with some of the tools I used.



TOOLS:

- [T10 Torx Screwdriver](#) (1)
 - [T8 Torx Screwdriver](#) (1)
-

Step 1 — HP OfficeJet Pro 8000 Teardown



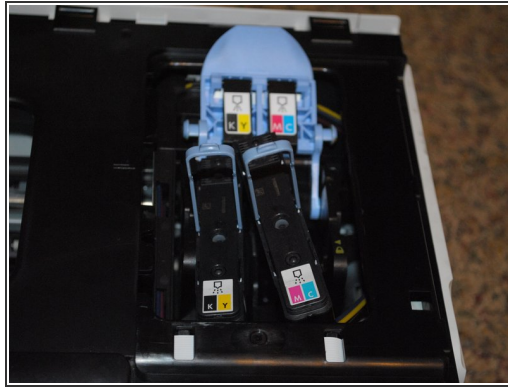
- Removing tray and such.

Step 2



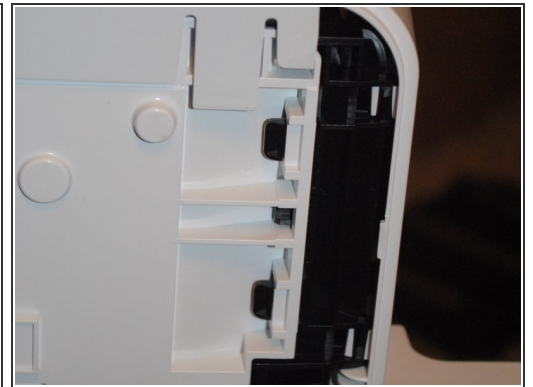
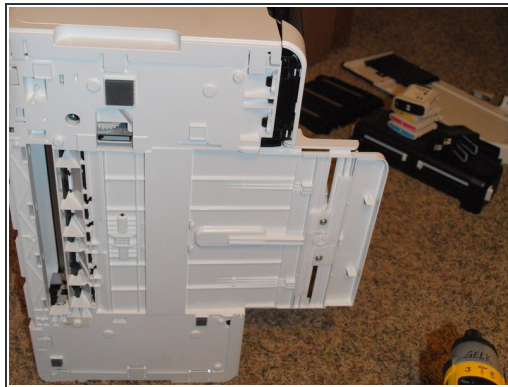
- Taking off the top.

Step 3



- Print heads coming out.

Step 4



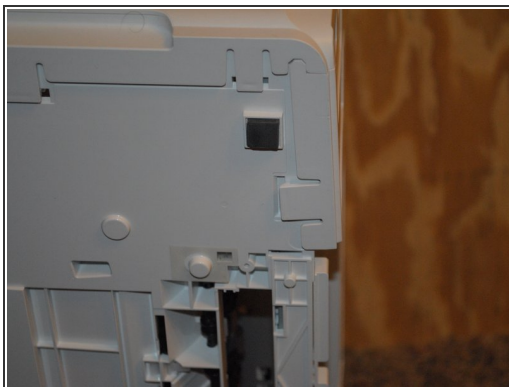
- Ink coming out.

Step 5



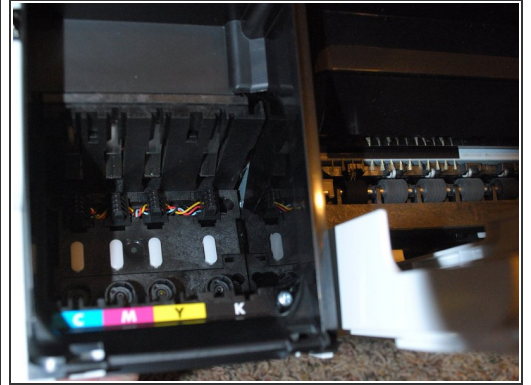
- T10 bit; time to start unscrewing.

Step 6



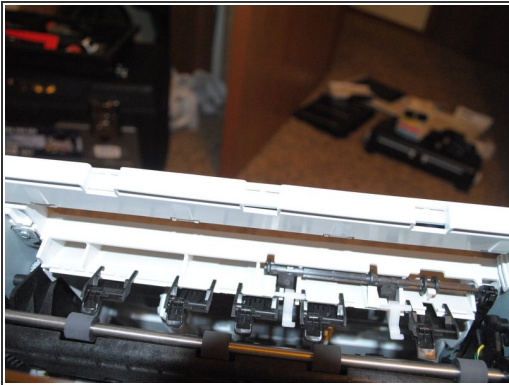
- Finding screws.

Step 7



- Finding more screws.

Step 8



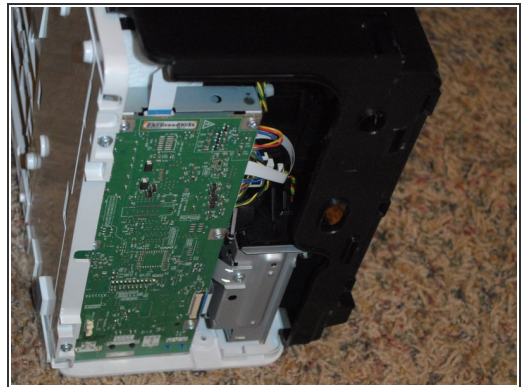
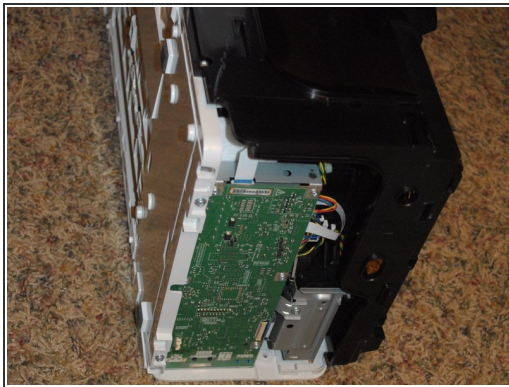
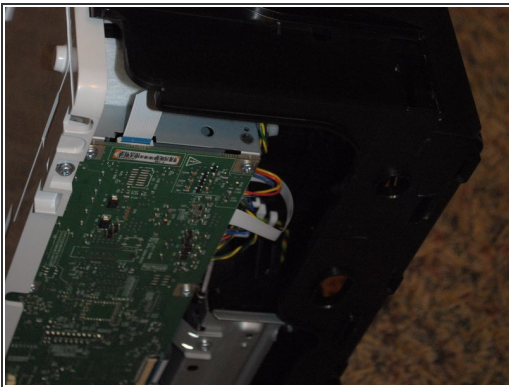
- Finding hidden screws.

Step 9



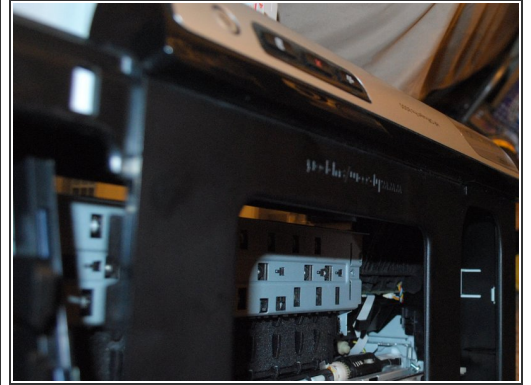
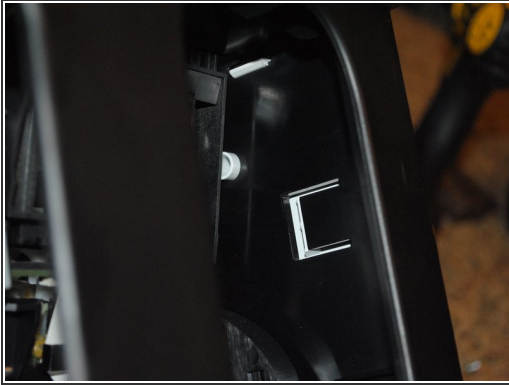
- Finding more hidden screws; breaking off side-panel cover thingy.

Step 10



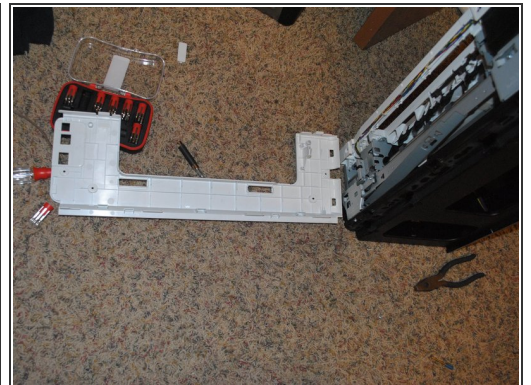
- The motherboard.

Step 11



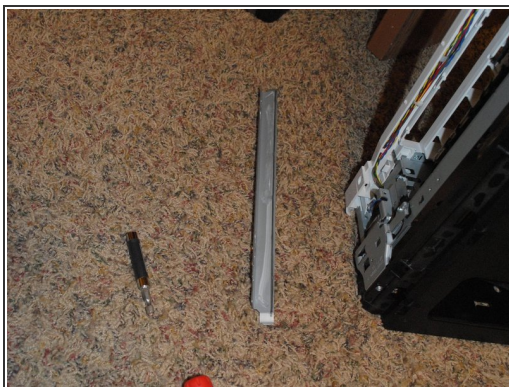
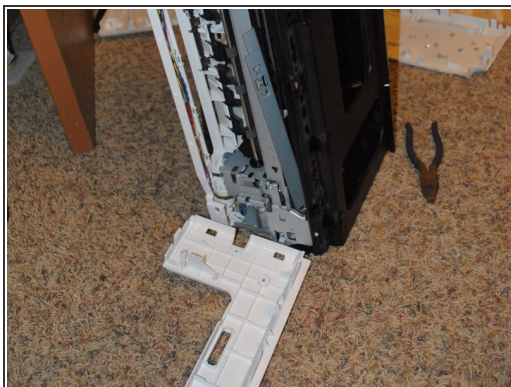
- Finding more release mechanisms.

Step 12



- Off come more outer panels; some with more (brute) force than others.

Step 13



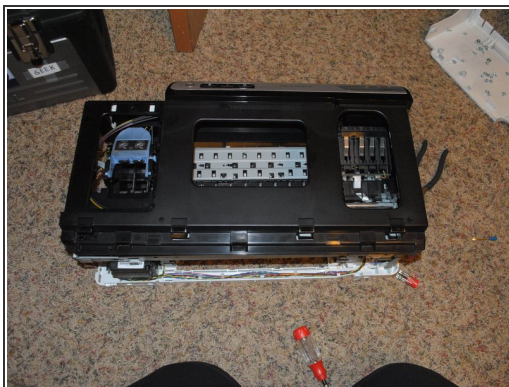
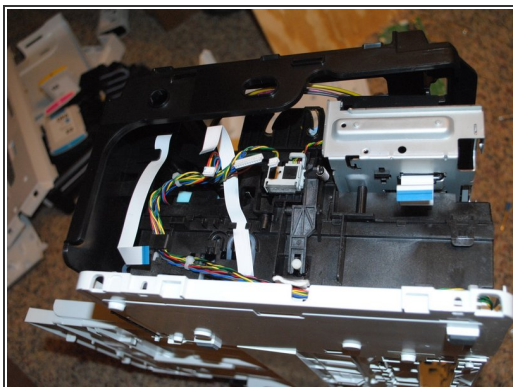
- Miscellaneous parts.

Step 14



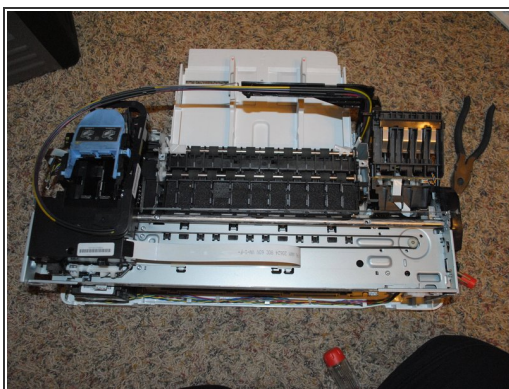
- More parts/stuff coming out.

Step 15



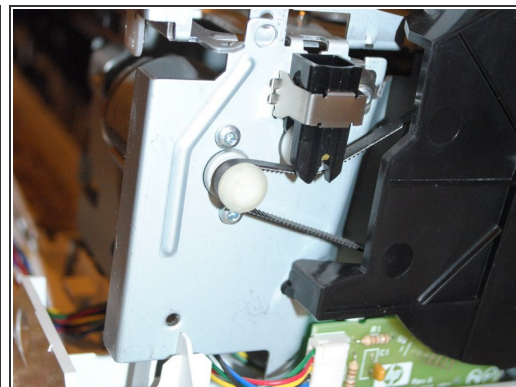
- Getting deeper!

Step 16



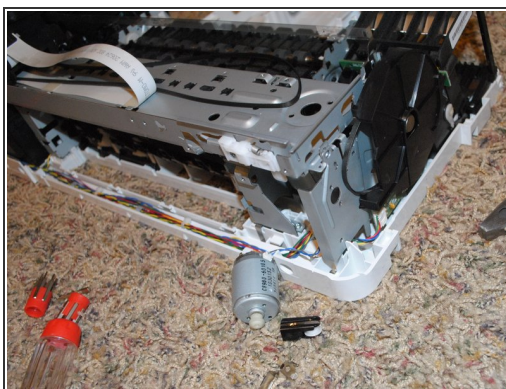
- Various assemblies coming apart/out.

Step 17



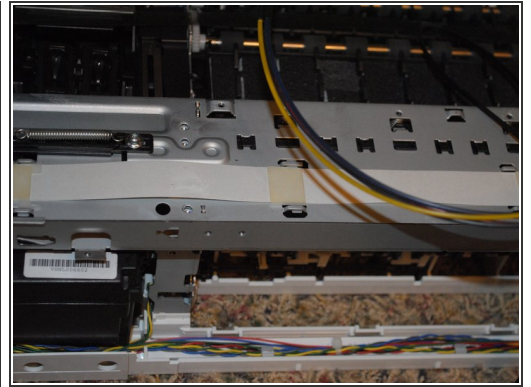
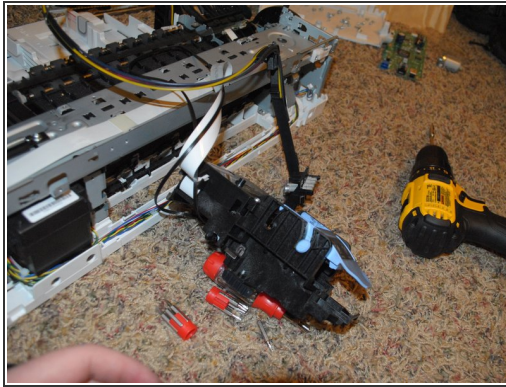
- Found some T8 screws used for a controller board and the motor screws.

Step 18



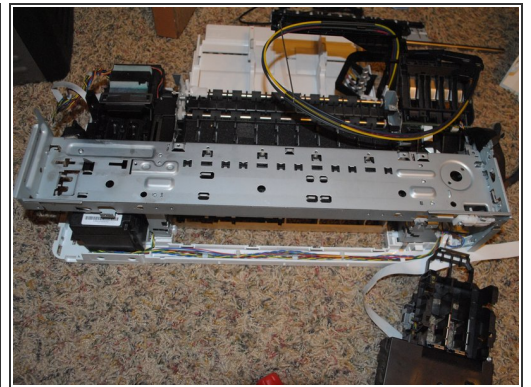
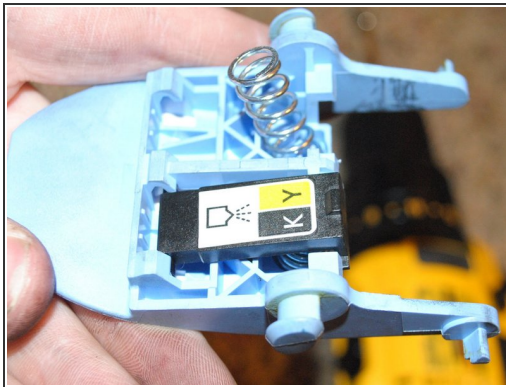
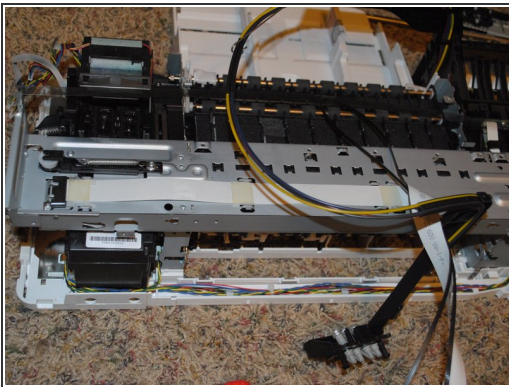
- Motor out, and plastic guide slide thingy detached from one end.

Step 19



- Print head assembly/hoses coming out/apart.

Step 20



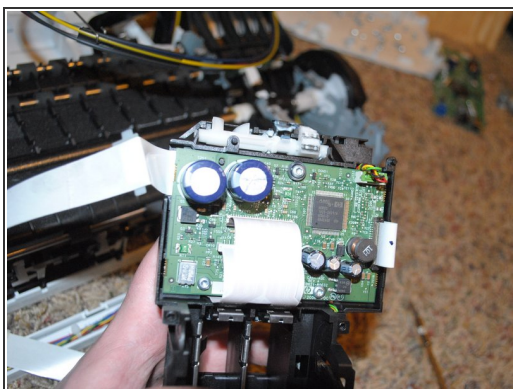
- More print head stuff.

Step 21



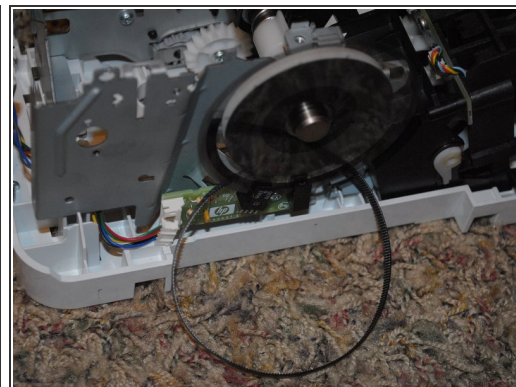
- More miscellaneous assemblies.

Step 22



- Another group of circuitry.

Step 23



- More mechanical parts.

Step 24



- More assemblies, and a pile of junk...

Step 25



- Leaked magenta, and as far as I went before calling the job "done enough".

To reassemble your device, follow these instructions in reverse order.