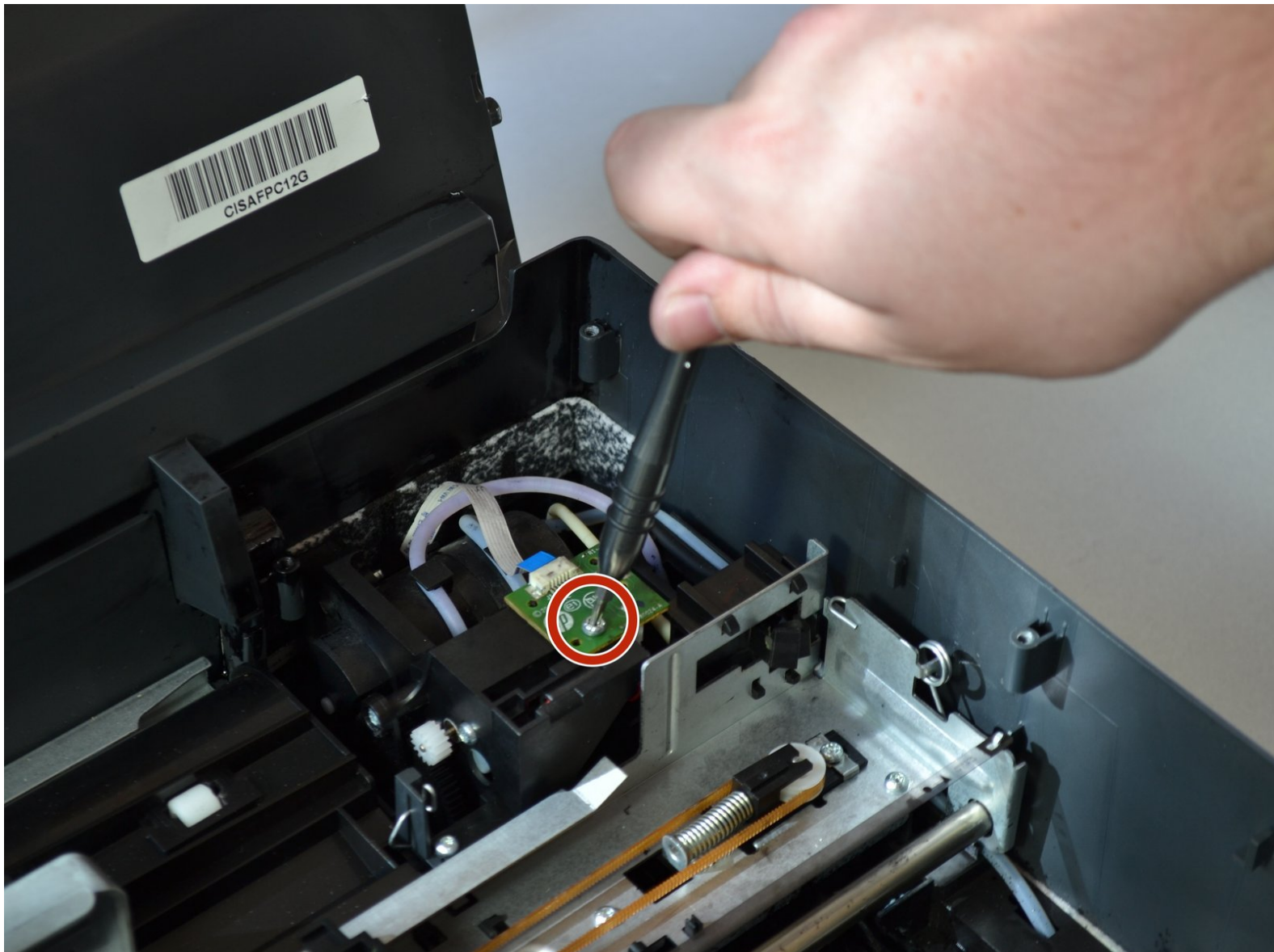




# HP Officejet Pro 6835 Sensor Chip Replacement

Replace the sensor chip inside of an HP Officejet Pro 6835.

Written By: Dimitri Charitou



---

## INTRODUCTION

The sensor chip is a small, green chip located in the top-right corner inside printer. It is held in by a small screw.

---

### TOOLS:

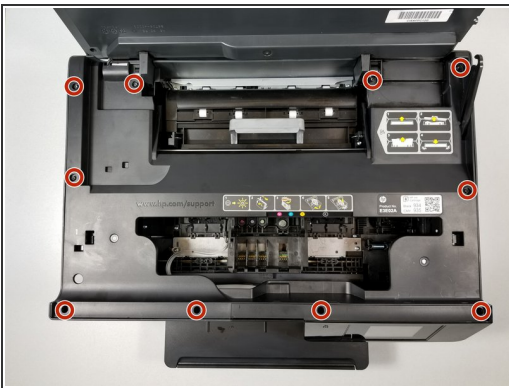
- [iFixit Opening Tools](#) (1)
  - [T9 Torx Screwdriver](#) (1)
-

## Step 1 — HP Officejet Pro 6835 Cover Disassembly



- Open the main lid as far as it will go.
- Use a plastic opening tool to gently pry off the hinge on the right side by pushing it to the left and off the hook.
- Open the lid further.

## Step 2

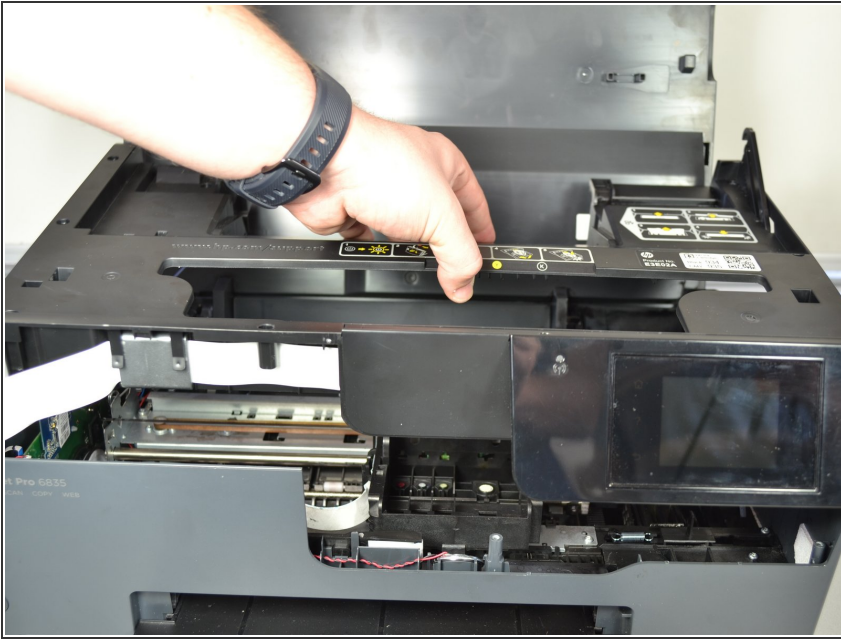


- Use a T9 torx screwdriver to remove a total of ten (10) 12mm screws from the main cover by turning the screwdriver counterclockwise.

**i** The two screws above the screen assembly are deep so you may need a long screwdriver.



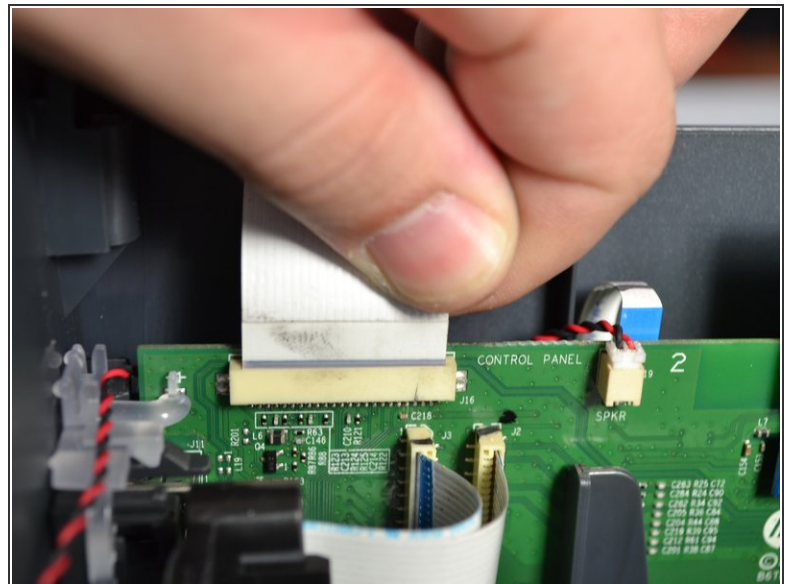
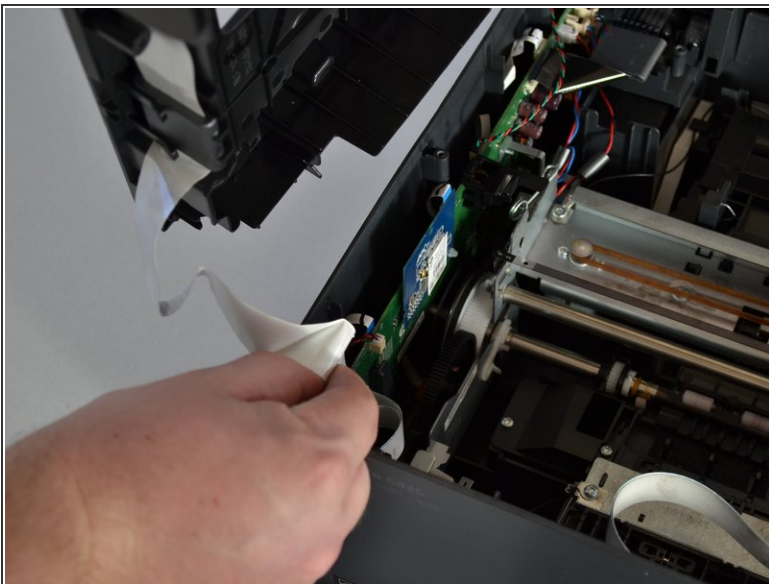
## Step 3



- Grab the main cover and lift it up slightly.

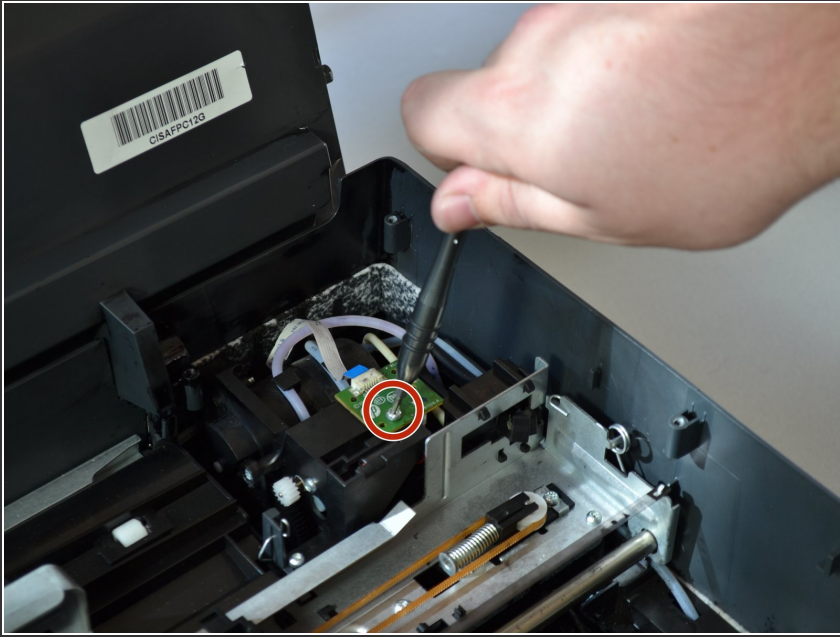
⚠ Do not pull too hard—there is a cable connecting the cover to the printer.

## Step 4



- Grab the base of the white ribbon cable connecting the cover to the base of the printer and pull it out.

## Step 5 — Sensor Chip



- Twist the screwdriver counter-clockwise to remove the T9 screw on the sensor chip.

## Step 6



- Pick up the sensor chip by the edges.
- Pull the white cable to disconnect it from the sensor chip.
- Repeat the process with the cable on the bottom.

To reassemble your device, follow these instructions in reverse order.