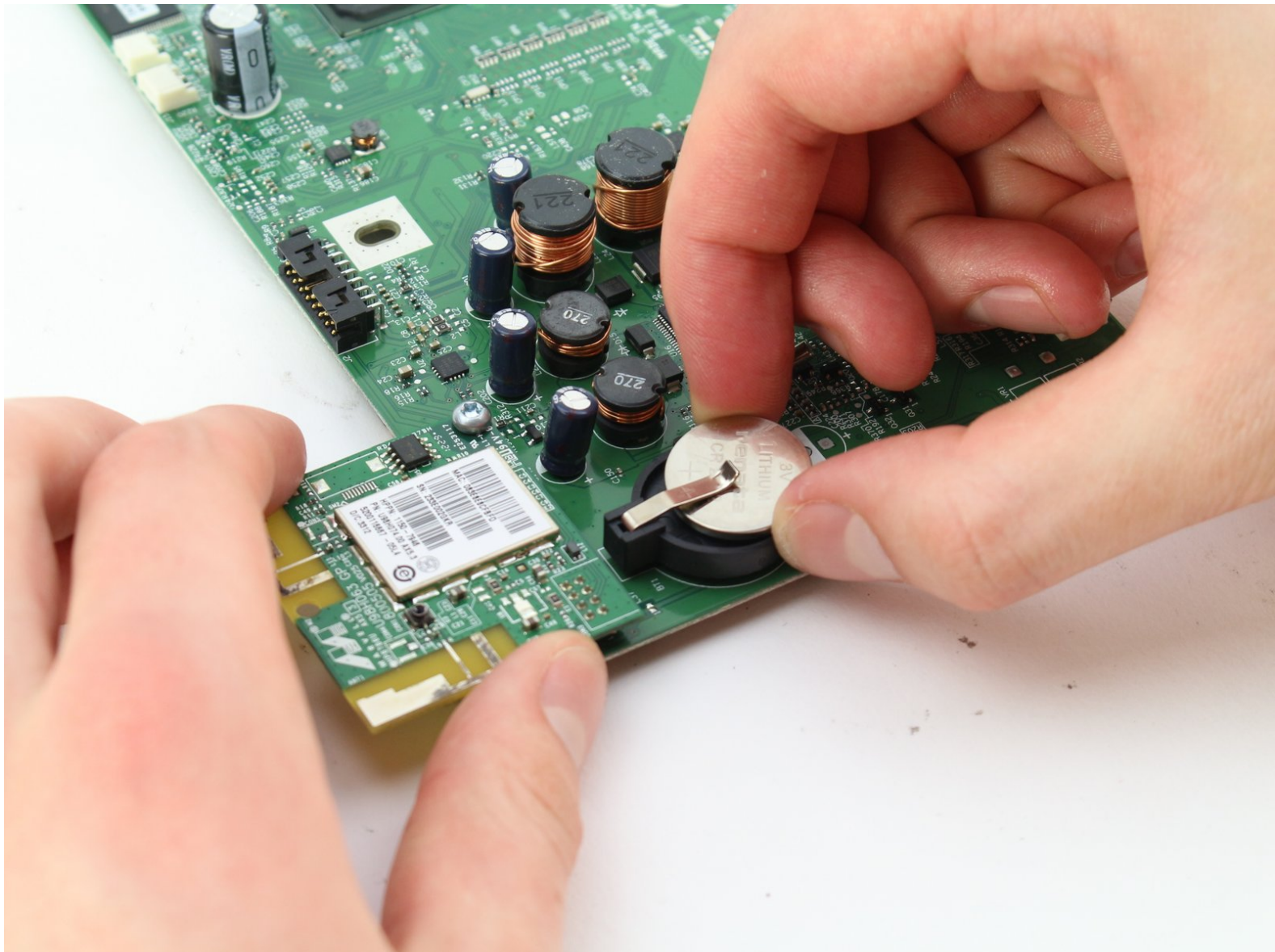




# HP Officejet Pro 8600 Plus Battery Replacement

How to replace the HP Officejet Pro 8600 Plus battery.

Written By: Mackinnon Buck



## INTRODUCTION

Sometimes the battery for the motherboard on the HP Officejet Pro 8600 Plus goes bad. This guide describes how to replace the battery located on the motherboard.



### TOOLS:

- [iFixit Opening Tools](#) (2)
  - [T10 Torx Screwdriver](#) (1)
-

## Step 1 — Motherboard



- Turn the printer so the back is facing you.
- Put the printer in a vertical position by lifting its right side.

## Step 2



- Remove the two 12mm T10 Torx screws on the top edge of the printer.

## Step 3



- Rotate the printer clockwise so the bottom of the printer is facing you.



## Step 4



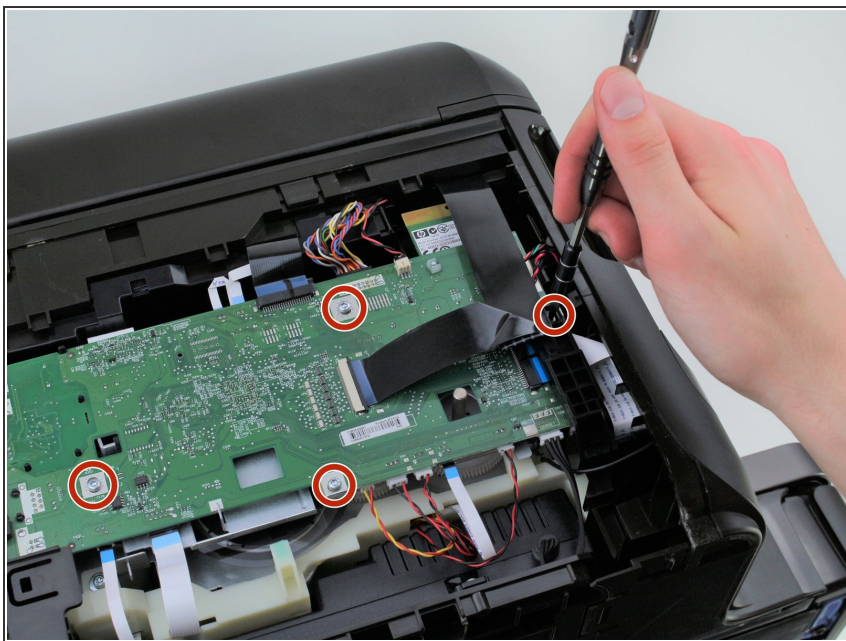
- Insert the plastic opening tool underneath the slot on the right that aligns with the edge of the back panel.
- Insert a second plastic opening tool in the notch lining up with the crease in the back panel.
- ⓘ This step requires applying a significant amount of force on the left notch. Don't be alarmed if you hear popping noises.

## Step 5



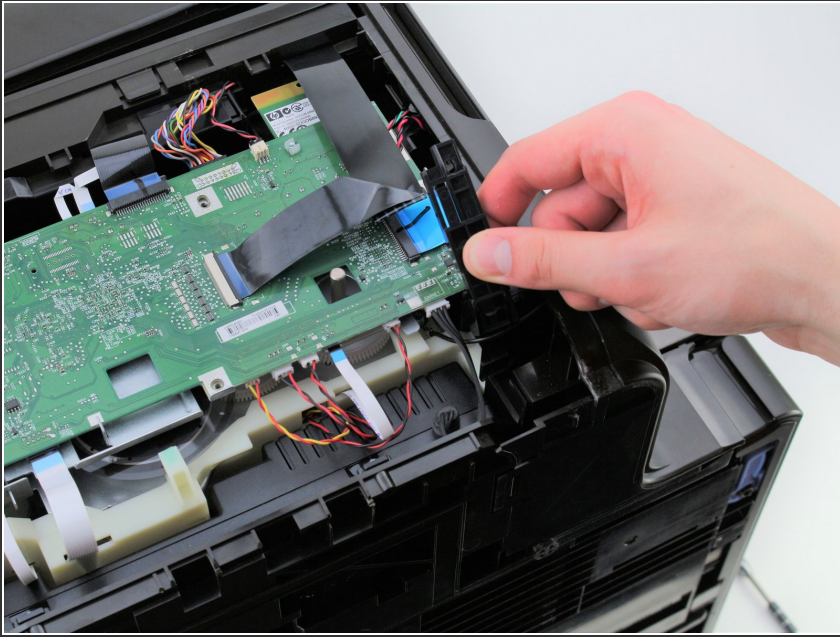
- Remove the side panel from the printer by lifting upwards toward you.
- ☑ For reassembly, slide the side panel from left to right into place.

## Step 6



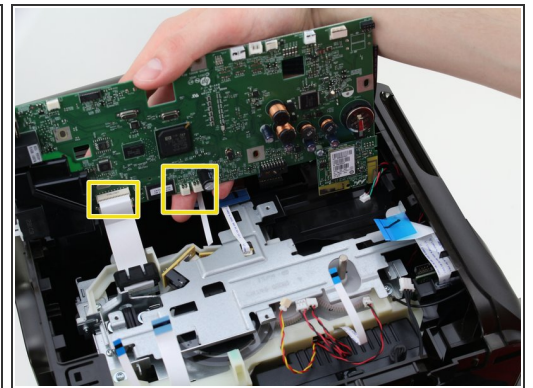
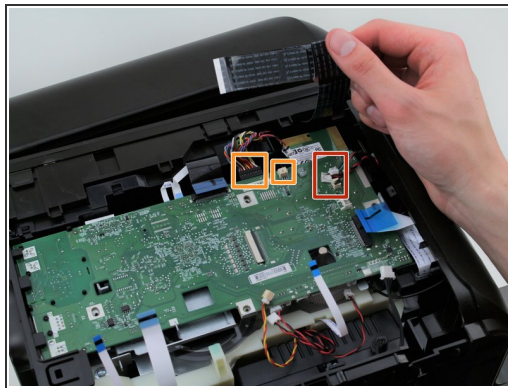
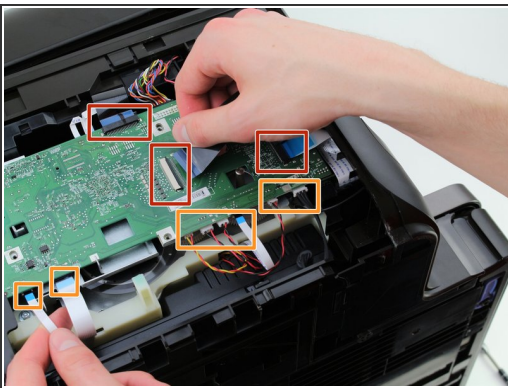
- Remove the four 6.5 mm T10 Torx screws from the motherboard.

## Step 7



- Remove the black brace from the right side of the motherboard, located near the black ribbon cable.

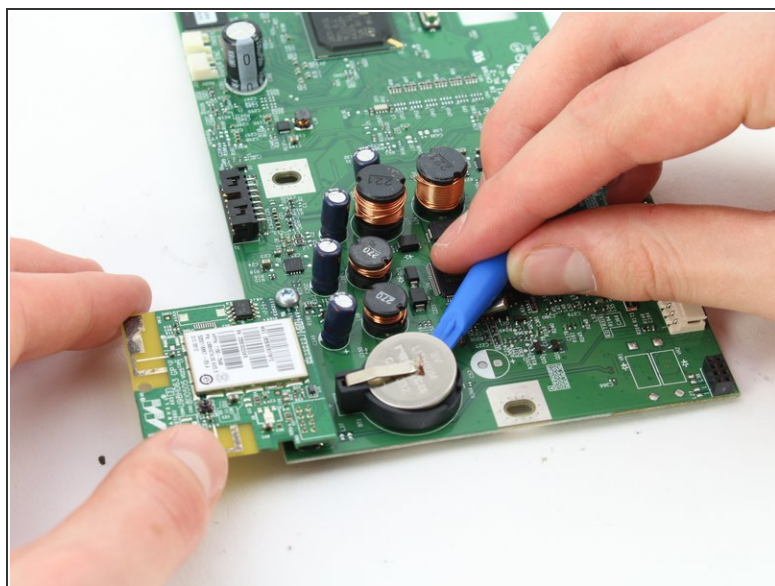
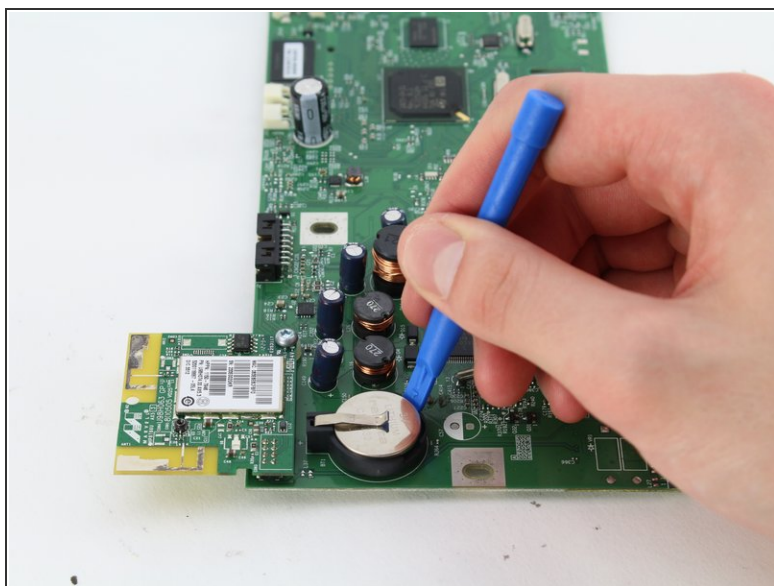
## Step 8



- Remove the cables connected to the top of the motherboard by gently pulling them out of their ports.
- Remove the cables connected to the edge of the motherboard by gently pulling them out of their ports.
- Remove the cables connected to the underside of the motherboard by gently pulling them out of their ports.

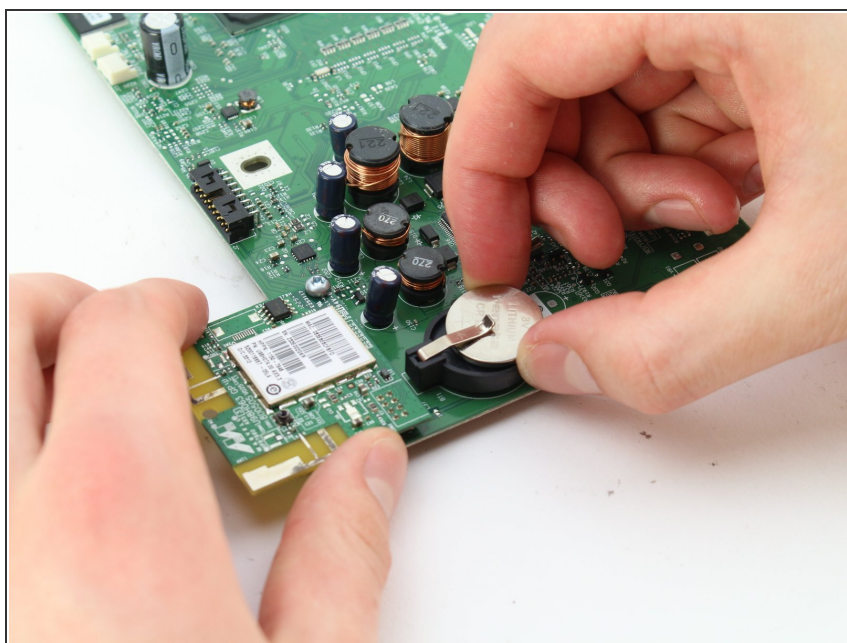


## Step 9 — Battery



- Turn the motherboard over so the back is facing upward.
- Use the plastic opening tool to pry the battery out of place.

## Step 10



- Remove the battery by grabbing its edges, lifting upward, and sliding sideways.



To reassemble your device, follow these instructions in reverse order.