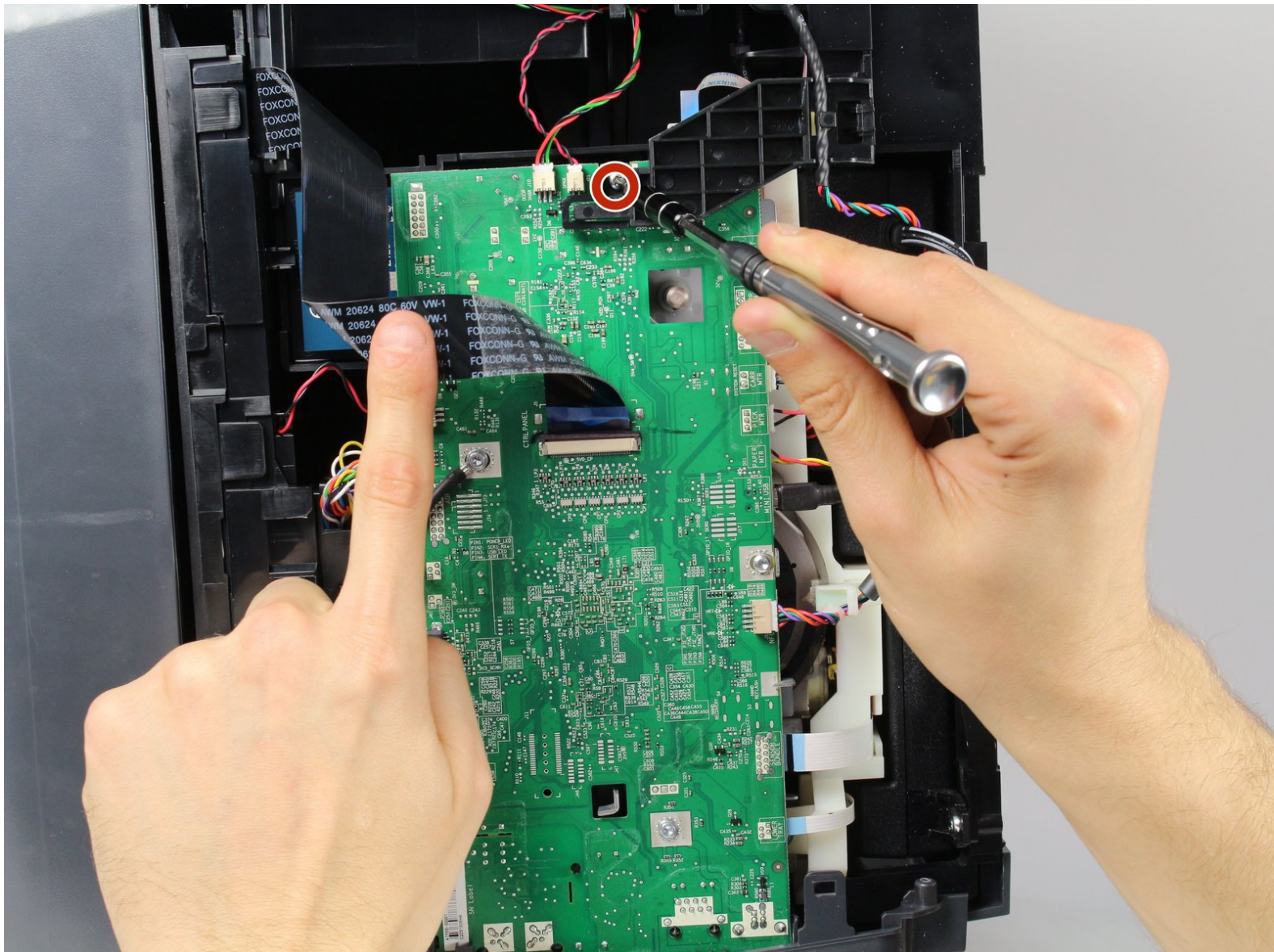




# HP Officejet Pro 8620 CMOS Battery Replacement

How to replace the CMOS battery in the HP Officejet Pro 8620.

Written By: Michael



---

## INTRODUCTION

The CMOS battery is an on board electronics memory storage battery. Removing it will reset all settings to default. If your printer frequently loses data or shuts off randomly, you may need to replace the CMOS battery.

---

### **TOOLS:**

- [T9 Torx Screwdriver](#) (1)
-

## Step 1 — Left Panel



- Turn off the printer and remove the power cable.
- Remove two 13mm T9 screws using a T9-Torx screwdriver. Turn counterclockwise until the screws are released.

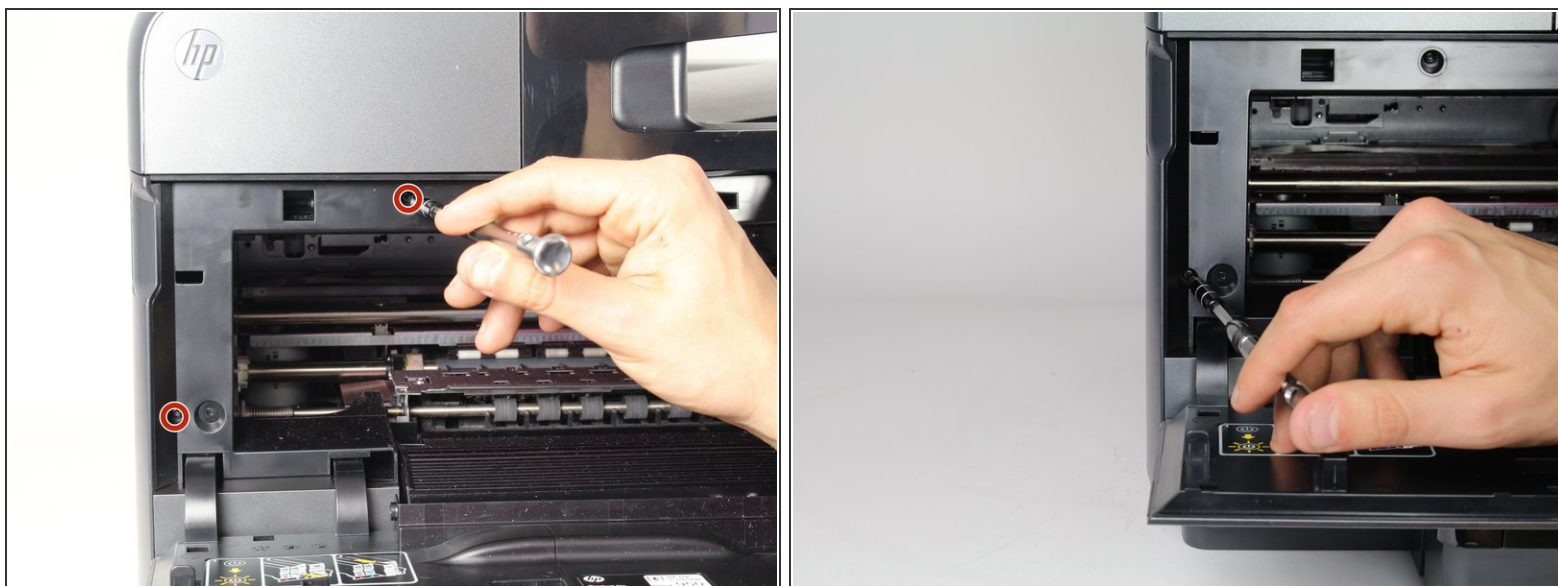
## Step 2



- Open the front door by placing your finger on the indented groove on the left side of the printer and pulling down
- ⓘ This will give you access to the two T9-TORX 13mm screws that need to be removed to release the panel.



### Step 3



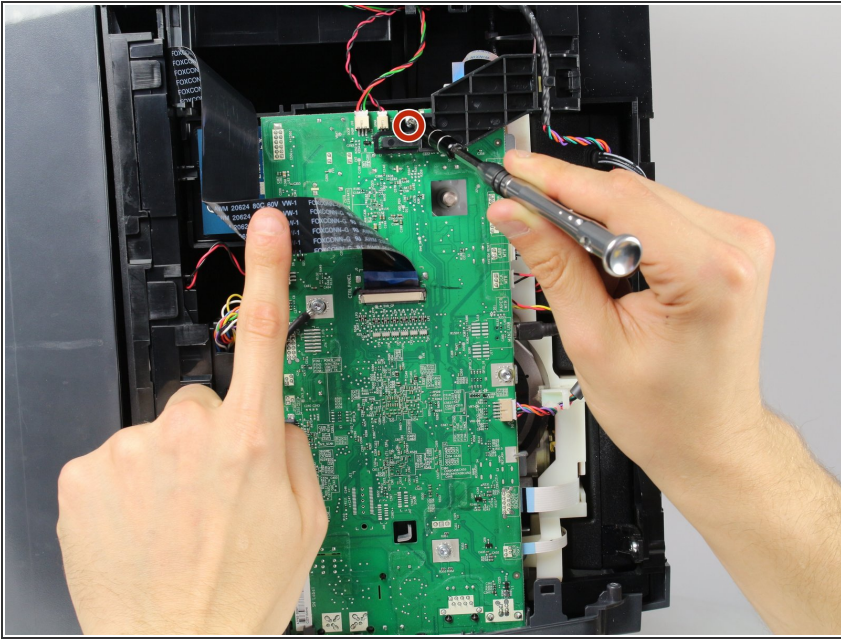
- Remove the two 13mm screws with a T9-TORX screwdriver by turning counter-clockwise (left).

### Step 4



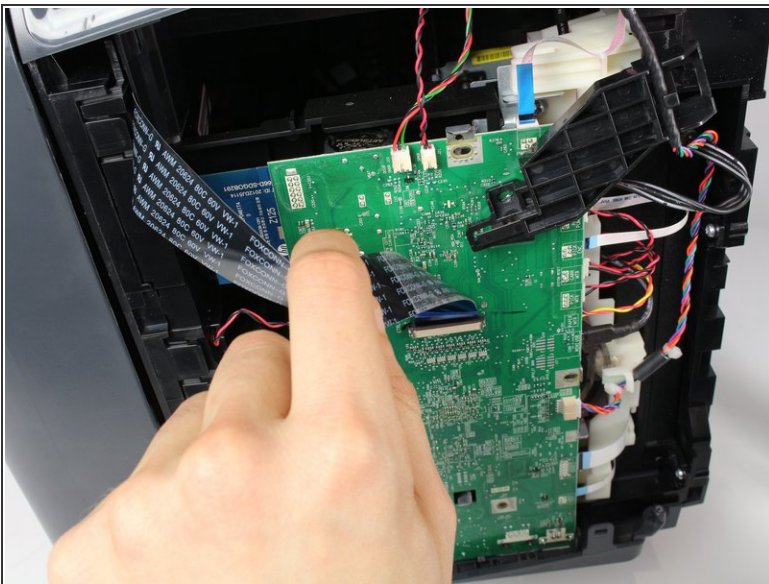
- Gently remove the left side panel by placing your palm flat against the surface and pulling down.

## Step 5 — CMOS Battery



- Gently bend the black ribbon cable by using your left hand.
- Remove the 8mm T9-Torx screw under the black plastic cover by turning counter clockwise.

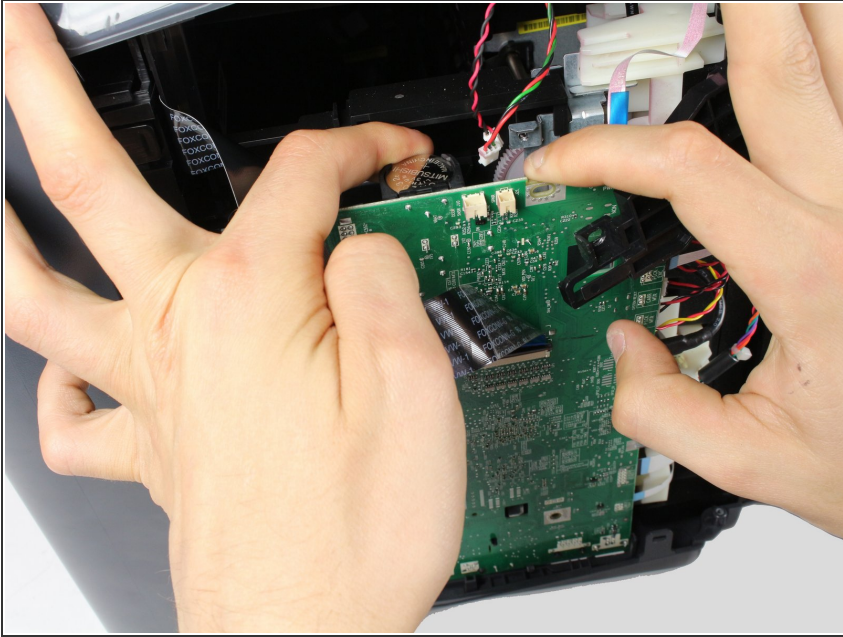
## Step 6



- Gently move the black plastic cover to the side by using your right hand.
- Place one finger behind the top of the motherboard where you removed the previous screw.
- Gently pull the motherboard towards you by about an inch by using your right hand's finger.



## Step 7



- Gently remove the CMOS battery by using a finger from your left hand, while holding the motherboard with your right hand.

To reassemble your device, follow these instructions in reverse order.